

File: V:\04_DATA\OFFICES\NMA\8\BUSINESS DEVELOPMENT\FAIRHAVEN\OXFORD SCHOOL RFP - STRATFORD 2015\DRAWING\LOT SHEETS\OXFORD FAIRHAVEN_C-202_G&D_U\TLDWG
Saved: 10/20/2016 8:26:06 AM Plotted: 10/20/2016 9:27:49 AM Current User: Rose, Donald Last Saved By: 4323

STORMWATER MANAGEMENT CONSTRUCTION PHASING:

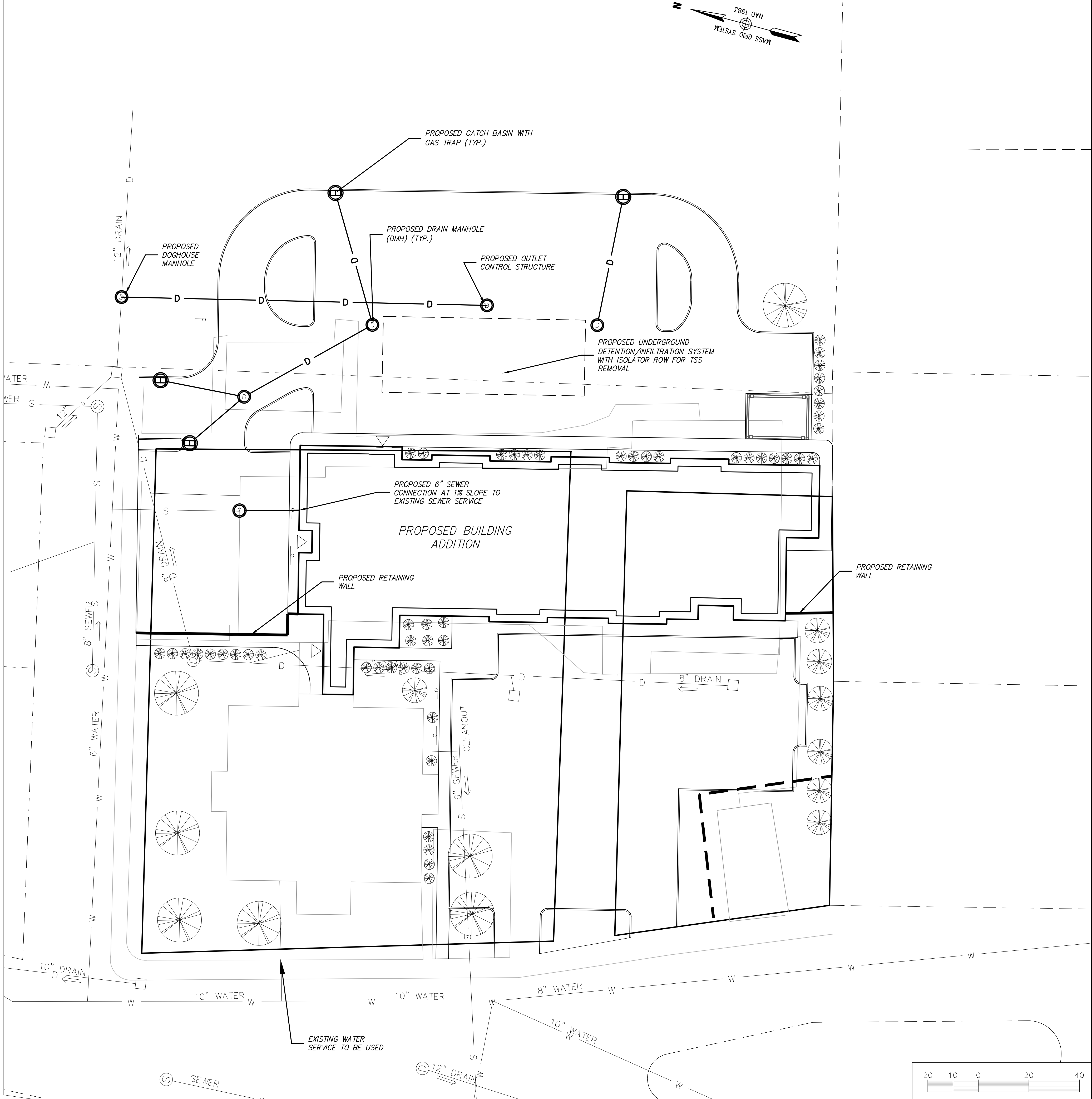
1. BELOW IS PRESENTED A GENERAL CONSTRUCTION PHASING. A MORE DETAILED SCHEDULE IS PRESENTED IN THE STORMWATER POLLUTION PREVENTION PLAN (SWPPP).
2. EXTENTS OF CONSTRUCTION TO BE DELINEATED BY CONTRACTOR.
3. EROSION AND SEDIMENTATION CONTROL MEASURES INCLUDING HAY BALES AND SILT FENCE WILL BE INSTALLED. CONTRACTOR SHALL INSPECT CONTROL MEASURES WEEKLY AND AFTER RAIN EVENTS OF 0.5" OR GREATER. CONTRACTOR SHALL EMPLOY A SWPPP MONITOR, PREFERABLY WITH MORE THAN 5 YEARS EXPERIENCE IN REVIEWING AND ADDRESSING CONSTRUCTION BMP'S AND ACTIVITY. TO PERFORM THE REQUIRED INSPECTIONS AND SUBMIT WEEKLY REPORTS TO THE CONTRACTOR, THE HOME, AND THE ENGINEER OF RECORD.
4. THE PROJECT AREA WILL BE CLEARED OF DEBRIS AND BOULDERS. MATERIAL REMOVED FROM THE SITE WILL BE TRANSPORTED TO AN APPROPRIATE FACILITY OR WILL BE DISPOSED OF ELSEWHERE ACCORDING TO FEDERAL, STATE, AND LOCAL GUIDELINES. INACTIVE STOCKPILES OR AREAS OF GRANULAR MATERIAL OR TOPSOIL SHALL BE TEMPORARILY SEEDED OR MULCHED IN ORDER TO CONTROL SEDIMENT LADEN RUNOFF.
5. CONTRACTOR IS RESPONSIBLE TO SET OUT UTILITIES AND ANY NECESSARY GRADES.
6. GRADING OF SITE INCLUDING BUILDING PADS, PARKING AREAS, AND DIGGING OF UTILITY TRENCHES TO DEFINED INVERT LEVELS. MATERIAL TO BE STORED ON AN UNUSED SITE AREA FOR FILL OR PROPERLY REMOVED FROM THE JOB SITE. IF SUITABLE TOPSOIL IS FOUND, IT WILL BE REMOVED AND STOCKPILED TO BE REUSED AS TOPSOIL ON THE PROJECT.
7. PLACING OF FILL OR SUITABLE MATERIAL FOR EASY ACCESS. SETTING OUT OF FOUNDATIONS AND SURROUNDING ROADS.
8. LAYING OF ALL UTILITIES INCLUDING DRAINAGE PIPES AND STRUCTURES FOLLOWED BY BACK-FILL, TAKING CARE TO LEAVE ONLY TRENCHES BEING WORKED ON OPEN.
9. FINE GRADING FOR THE PARKING AREAS AND LANDSCAPE AREAS TO BE COMPLETED.
10. ONCE THE DRAINAGE STRUCTURES ARE INSTALLED, PROVIDE PROTECTION AT ALL CATCH BASINS AND INLETS TO PREVENT SEDIMENT FROM ENTERING THE DRAINAGE SYSTEM.
11. INSTALL BINDER COURSE AND SPREAD TOPSOIL AS NEEDED.
12. LIGHT POLES, SIGNAGE, ETC. WILL BE INSTALLED.
13. INSTALL TOP COURSE OF PAVING AND SIDEWALK.
14. THE FINAL PHASE OF CONSTRUCTION IS RESTORATION AND STABILIZATION OF ALL EXPOSED SURFACES. DISTURBED AREAS SHALL BE LANDSCAPED OR SEEDED (SEE ADDITIONAL DISCUSSION IN SWPPP). IN THE EVENT THAT WEATHER CONDITIONS PREVENT FINAL STABILIZATION, TEMPORARY EROSION AND SEDIMENTATION MEASURES WILL BE EMPLOYED UNTIL THE TEMPERATURE AND WEATHER IS SUITABLE FOR GRASS GROWING. A FINAL INSPECTION WILL ENSURE THAT THE SITE IS CLEARED OF ALL PROJECT DEBRIS AND THAT EROSION AND SEDIMENTATION CONTROLS ARE FUNCTIONING PROPERLY. HAYBALES AND SILT FENCE WILL REMAIN IN PLACE UNTIL THE SITE IS FULLY STABILIZED AND THE SITE HAS PASSED FINAL INSPECTION. VEGETATION MUST BE PERENNIAL AND HAVE A UNIFORM DENSITY OF AT LEAST 70% FOR ACCEPTANCE. REFER TO LANDSCAPE PLANS FOR MORE DETAILED INFORMATION REGARDING ESTABLISHMENT AND WATERING/MOVING OF VEGETATION.
15. CONTRACTOR MAY BE REQUIRED TO SECURE OFF-SITE STAGING AREA FOR MATERIALS AND SHALL SECURE AND TRANSPORT MATERIALS TO/FROM THE SITE AS NEEDED, AT NO ADDITIONAL COST TO THE OWNER.

STORMWATER MANAGEMENT NOTES:

1. CONTRACTOR TO ABIDE BY PROVISIONS OF EPA NOI NPDES STORMWATER POLLUTION PREVENTION PLAN (SWPPP) AND BY STORMWATER MANAGEMENT OPERATION AND MAINTENANCE PLAN.
2. CONTRACTOR TO PROVIDE ENGINEER, FOR APPROVAL PRIOR TO CONSTRUCTION, A CONSTRUCTION FENCE LOCATION PLAN, OUTLINING LIMITS OF ALL SITE CONSTRUCTION FENCING AND LOCATION OF ALL ENTRY/EXIT GATES.
3. ALL TEMPORARY STOCKPILE AREAS SHALL HAVE EROSION CONTROLS (HAYBALES AND SILT FENCE) AROUND THE PERIMETER. POTENTIAL STOCK PILE AREAS TO BE PROTECTED WITH EROSION CONTROL MEASURES.
4. UNDERGROUND UTILITIES MAY EXIST THAT ARE NOT SHOWN ON THIS PLAN. DIG SAFE MUST BE NOTIFIED (1-800-344-7233) AT LEAST 72 HOURS PRIOR TO ANY CONSTRUCTION.
5. ALL SEDIMENTATION AND EROSION CONTROL MEASURES SHALL BE MAINTAINED THROUGHOUT THE CONSTRUCTION PERIOD. SEDIMENTATION AND EROSION CONTROL MEASURES SHALL BE IN PLACE AND OBSERVED PRIOR TO ANY WORK STARTING ON THE PROJECT.
6. SITE ENTRY AND EXIT LOCATIONS SHALL BE MAINTAINED IN A CONDITION WHICH WILL PREVENT TRACKING OR FLOWING OF SEDIMENT ONTO PUBLIC ROADWAYS. ALL SEDIMENT SPILLED, DROPPED, WASHED OR TRACKED ON A PUBLIC ROADWAY MUST BE REMOVED IMMEDIATELY. WHEN WASHING IS REQUIRED TO REMOVE SEDIMENT PRIOR TO ENTRANCE TO A PUBLIC ROADWAY, IT SHALL BE DONE ON AN AREA STABILIZED WITH CRUSHED STONE WHICH DRAINS INTO AN APPROVED SEDIMENT BASIN. ALL FINES IMPOSED FOR TRACKING ONTO PUBLIC ROADS SHALL BE PAID BY THE CONTRACTOR.
7. TEMPORARY SEEDING OR OTHER METHOD OF STABILIZATION SHALL BE INITIATED WITHIN 14 DAYS OF THE LAST DISTURBANCE ON ANY AREA OF THE SITE, UNLESS ADDITIONAL CONSTRUCTION OF THE AREAS IS EXPECTED WITHIN 21 DAYS OF THE LAST DISTURBANCE.
8. UPON COMPLETION OF FINE GRADING, ALL AREAS NOT OTHERWISE PERMANENTLY STABILIZED SHALL BE SEEDED AND MAINTAINED UNTIL A UNIFORM COVERAGE OF 75%± MINIMUM DENSITY, AS DETERMINED BY THE OWNER'S REPRESENTATIVE, IS ACHIEVED.
9. MAINTENANCE - EROSION CONTROLS SHALL BE REPAIRED OR REPLACED AS INSPECTION DEEMS NECESSARY OR AS DIRECTED BY THE ENGINEER OR ARCHITECT. ACCUMULATED SILT AT ANY EROSION CONTROL DEVICE SHALL BE REMOVED WHEN IT REACHES A DEPTH OF 6", AND SHALL BE DISTRIBUTED ON-SITE IN A MANNER NOT CONTRIBUTING TO ADDITIONAL SILTATION.
10. CONTRACTOR IS RESPONSIBLE FOR REESTABLISHING ANY EROSION CONTROL DEVICE WHICH DISTURBED. CONTRACTOR SHALL NOTIFY THE ENGINEER/ARCHITECT OF ANY DEFICIENCIES IN THE ESTABLISHED EROSION CONTROL MEASURES WHICH MAY LEAD TO UNAUTHORIZED DISCHARGE OR STORM WATER POLLUTION, SEDIMENTATION OR OTHER POLLUTANTS. UNAUTHORIZED POLLUTANTS INCLUDE, BUT ARE NOT LIMITED TO, EXCESS CONCRETE DUMPING OR CONCRETE RESIDUE, PAINTS, SOLVENTS, GREASE, FUEL, AND LUBE OIL, PESTICIDES, ANY SOLID WASTE MATERIALS.
11. ALL SIDE SLOPES SHALL BE SEEDED WITH GRASS OR INSTALL JUTE NETTING TO PREVENT EROSION.
12. MAINTENANCE: EROSION CONTROLS SHALL BE REPAIRED OR REPLACED AS INSPECTION DEEMS NECESSARY OR AS DIRECTED BY THE ENGINEER OR ARCHITECT. ACCUMULATED SILT AT ANY EROSION CONTROL DEVICE SHALL BE REMOVED WHEN IT REACHES A DEPTH OF 6", AND SHALL BE DISTRIBUTED ON-SITE IN A MANNER NOT CONTRIBUTING TO ADDITIONAL SILTATION.
13. INSPECTIONS: INSPECTIONS ARE TO BE PERFORMED BY QUALIFIED PERSONNEL. QUALIFIED PERSONNEL ARE DEFINED TO BE PERSON OR PERSONS WHO HAVE COMPLETED THE CERTIFIED PROFESSIONAL IN EROSION AND SEDIMENT CONTROL (CPESC) COURSE AND/OR WHO HOLD THEIR CPESC LICENSE. DISTURBED AREAS THAT HAVE NOT BEEN FINALLY STABILIZED, AREAS USED FOR STORAGE, STRUCTURAL CONTROL MEASURES, AND LOCATIONS WHERE VEHICLES ENTER OR EXIT THE SITE, MUST BE INSPECTED ONCE EVERY 7 DAYS AND WITHIN 24 HOURS OF A STORM EVEN OF 0.5 INCHES OR GREATER. STABILIZED AREAS ARE TO BE INSPECTED ONCE PER MONTH DISTURBED AREAS AND STORAGE AREAS EXPOSED TO PRECIPITATION SHALL BE INSPECTED FOR EVIDENCE OF OR POTENTIAL FOR POLLUTANTS ENTERING THE DRAINAGE SYSTEM. CONTROL MEASURES SHALL BE OBSERVED TO ENSURE THEY ARE WORKING PROPERLY. DISCHARGE LOCATIONS AND POINTS SHALL BE INSPECTED TO ASCERTAIN WHETHER CONTROLS ARE PREVENTING SIGNIFICANT IMPACT. BASED ON THE RESULTS OF THE ABOVE INSPECTIONS, ANY NECESSARY CHANGES TO THE PLAN WILL BE MADE WITHIN 7 DAYS OF THE INSPECTION OR BEFORE THE NEXT RAIN EVENT, WHICH EVER COMES FIRST. THE CHANGES MUST BE IMPLEMENTED IN THE FIELD BEFORE THE NEXT STORM EVEN IF PRACTICABLE, OTHERWISE AS SOON AS POSSIBLE.
14. INSTALL AND MAINTAIN CATCH BASIN INSERTS IN ALL PROPOSED AND EXISTING CATCH BASINS.
15. PROVIDE TEMPORARY SEDIMENTATION BASINS, HAY BALES, ETC. AS NECESSARY.
16. STOCKPILES NOT TO BE REUSED WITHIN 30 DAYS ARE TO BE STABILIZED WITH SEED OR MULCH.
17. CONTRACTOR SHALL HAVE A WATER TRUCK AVAILABLE, IF NECESSARY, AND SHALL PROVIDE TEMPORARY PLANTINGS OR OTHER COVERINGS SUCH AS WOOD CHIPS TO MINIMIZE THE AMOUNT OF DUST LEAVING THE PREMISES, AS NECESSARY.
18. CONTRACTOR SHALL REMOVE AND DISPOSE OF EROSION CONTROL DEVICES IN ACCORDANCE WITH LOCAL, STATE AND FEDERAL STANDARDS WHEN THE FINAL SITE VEGETATION IS ESTABLISHED AND MAINTAINED FOR TWO GROWING SEASONS.

LEGEND

← FLOW DIRECTION



The Oxford School Residences

347 Main Street
Fairhaven, Massachusetts



ARCHITECT

E-ICON
ARCHITECTURE

101 SUMMER ST BOSTON MA 02110

CONSULTANT



STAMP



KEY PLAN

	10/19/2016	
MARK	DATE	DESCRIPTION
PROJECT NO.: 21101.00		
DRAWN BY: DAR		
CHECKED BY: KK		

SHEET TITLE

GRADING,
DRAIANGE, AND
UTILITY PLAN

C-202