

PHASE V DREDGING



Photo by Ed Pepin

Presentation

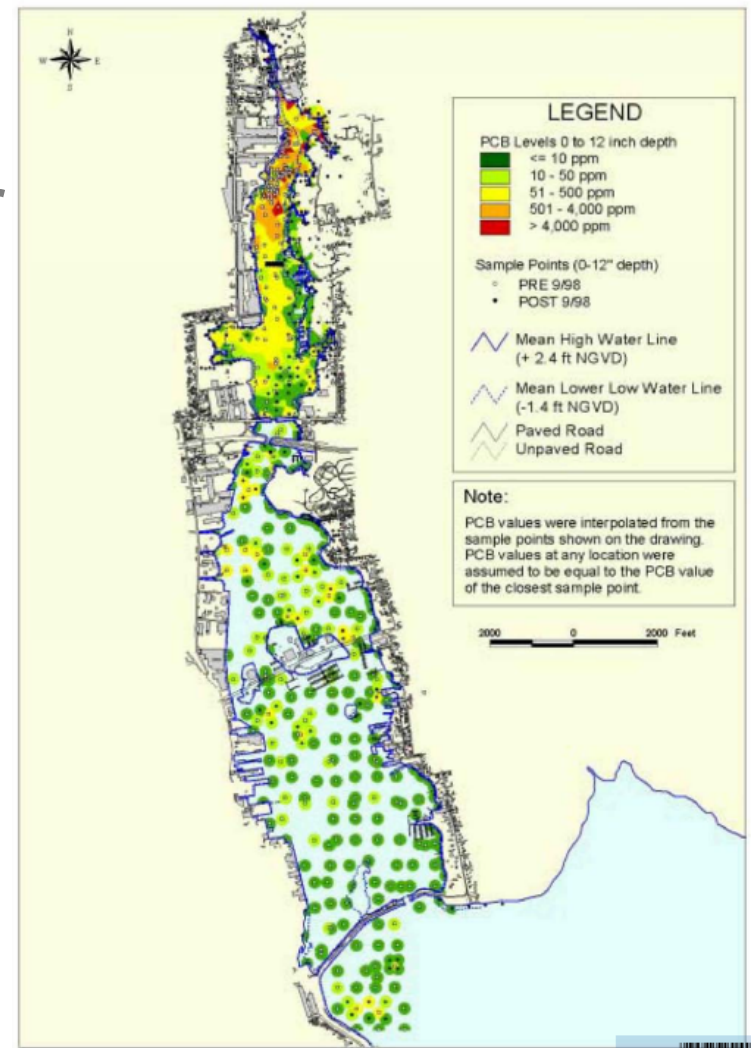
- Introduction
- Project Overview
- Brief History of Dredging
- Project Benefits and Details





Superfund and State-Enhanced Remedy

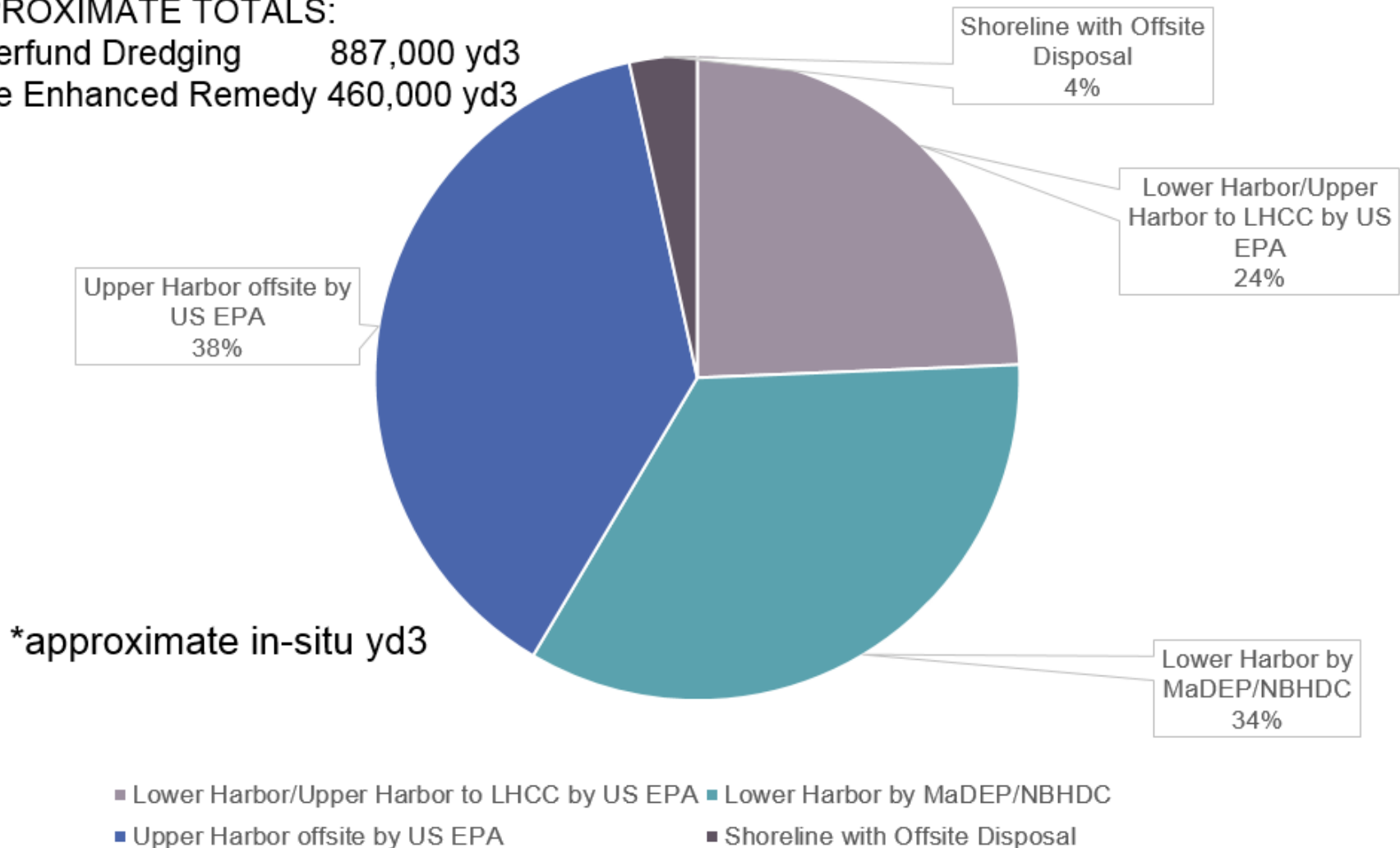
- 1983: EPA declared more than 18,000 acres of New Bedford Harbor and Buzzards Bay a Superfund site
- 1998: A Record of Decision (ROD) was issued
- State-Enhanced Remedy (SER) Provision of ROD
 - Previous Dredge Phases I – IV
 - Town of Fairhaven and City of New Bedford dredged materials



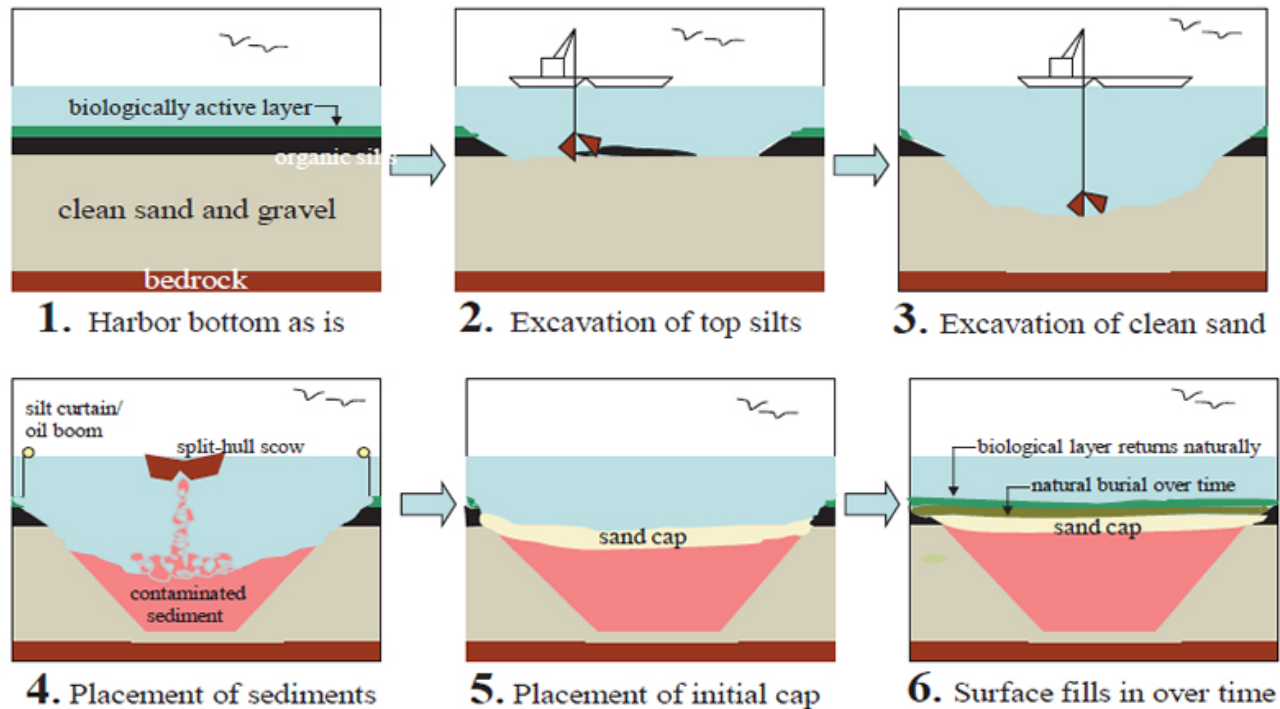
Dredging Progress Through April 2019 by SER and US EPA (Superfund) 1.35 Million Cubic Yards Complete*

APPROXIMATE TOTALS:

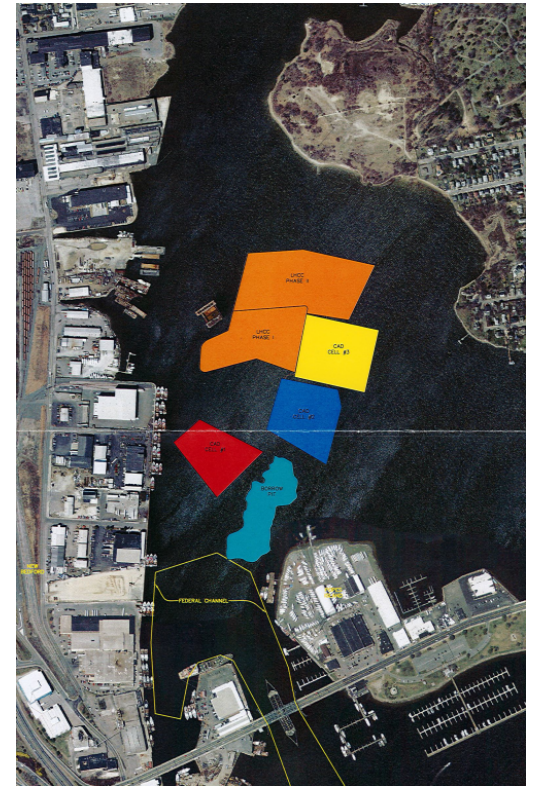
Superfund Dredging 887,000 yd3
State Enhanced Remedy 460,000 yd3



Confined Aquatic Disposal (CAD) Cells



For illustrative purposes only – NOT TO SCALE



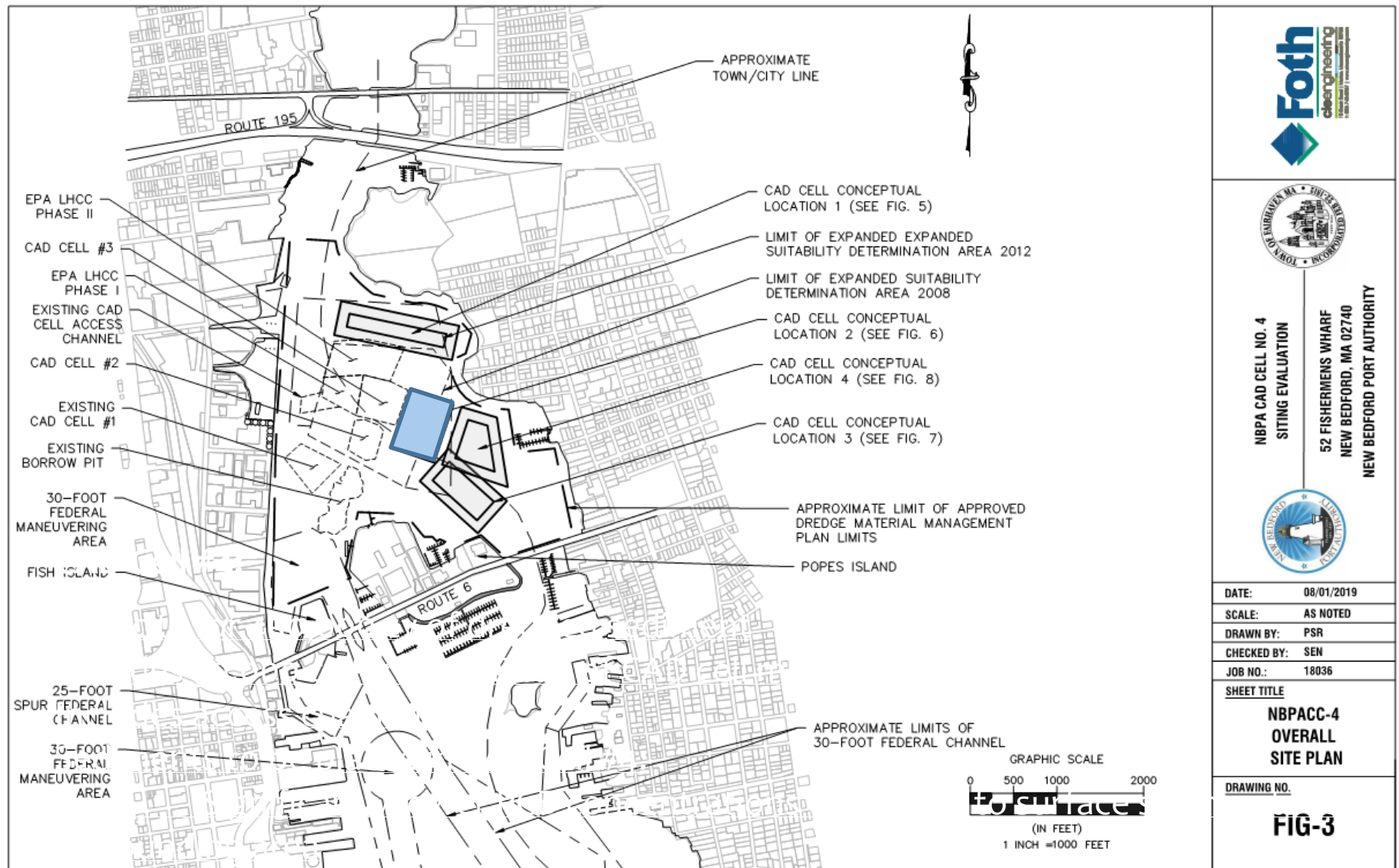
NBPA and Town of Fairhaven - Operations and Maintenance

CAD Cell #4 Siting

- **Siting Evaluation Based on:**
 - Location within DMMP
 - Geotechnical Properties of the Site Location
 - Potential for Interference with Existing Navigational Uses
 - Interaction with Existing and Planned CAD Cells
 - Depth to Rock
 - Proximity to Existing Navigational Channels
 - Thickness of Mud Layer to be Placed in CAD #2
 - Need for Transitional CAD Cell
 - Need for Channel to Access CAD Cell Location
 - Proximity to Shoreline / Residences



CAD Cell #4 Siting



NBPA CAD CELL NO. 4
SITING EVALUATION
52 FISHERMENS WHARF
NEW BEDFORD, MA 02740
NEW BEDFORD PORT AUTHORITY



DATE: 08/01/2019

SCALE: AS NOTED

DRAWN BY: PSR

CHECKED BY: SEN

JOB NO.: 18036

SHEET TITLE

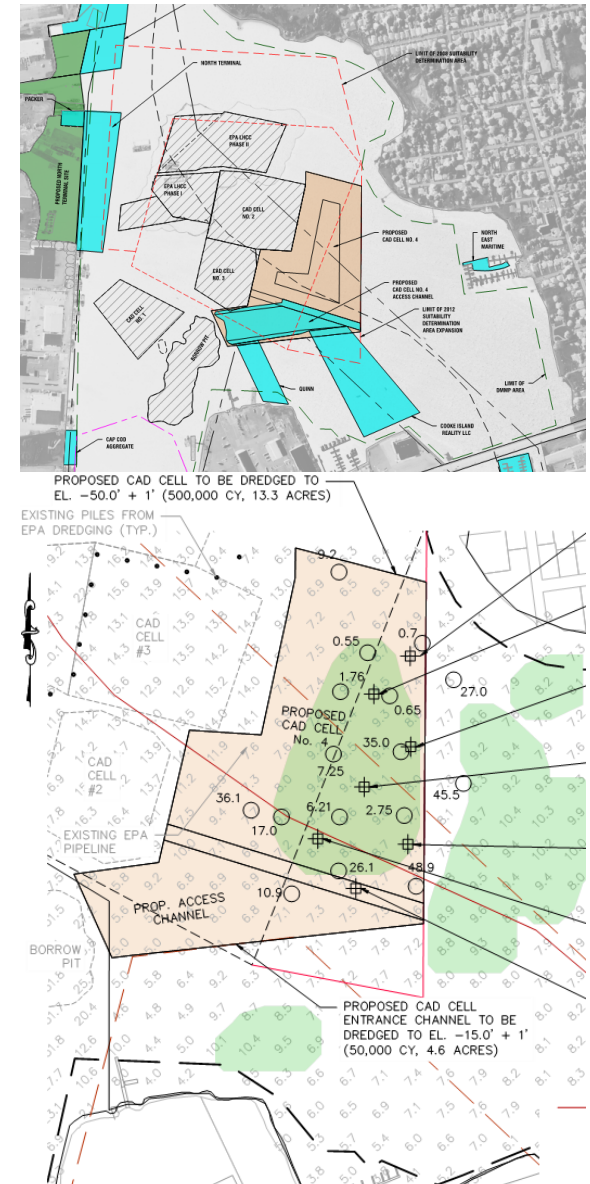
**NBPACC-4
OVERALL
SITE PLAN**

DRAWING NO.

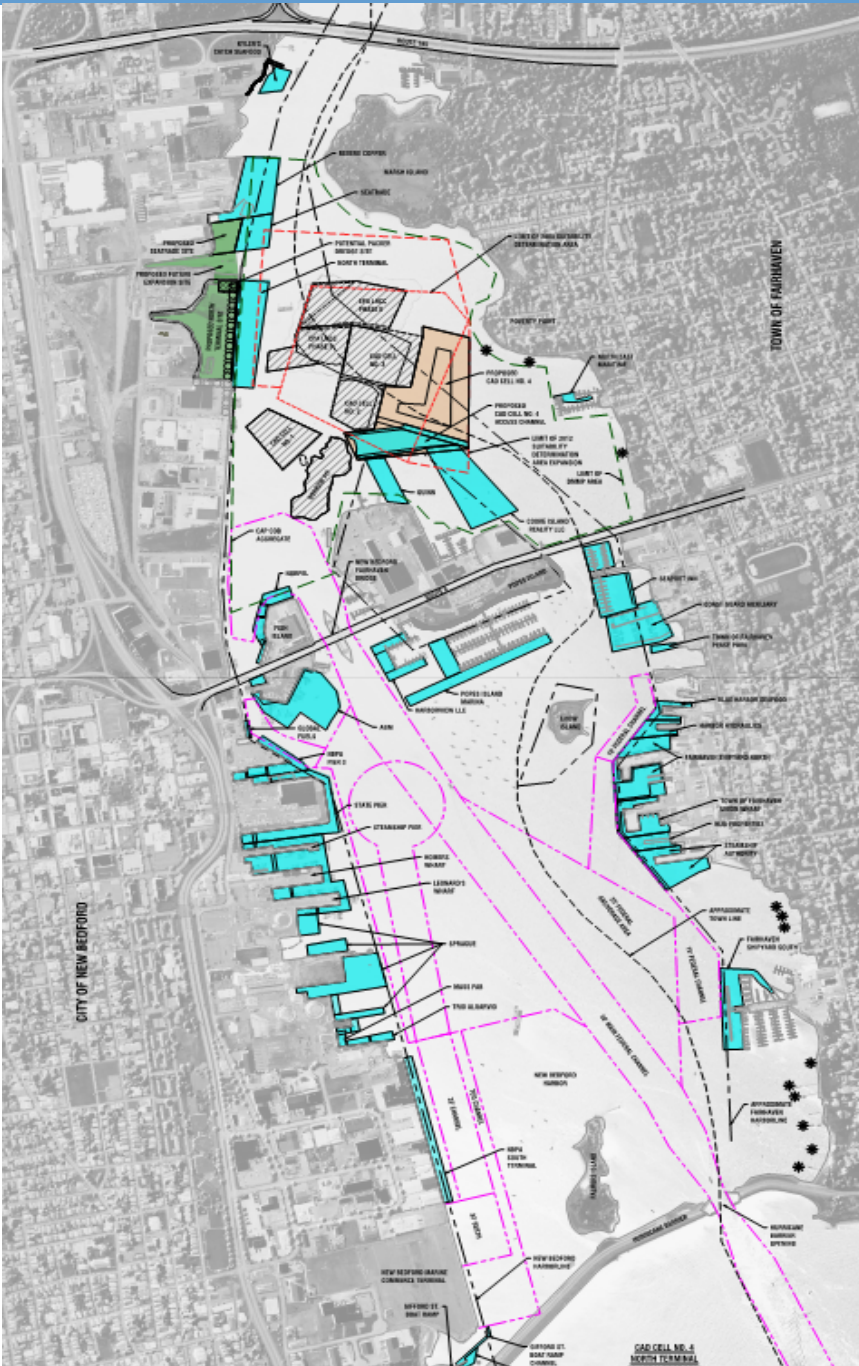
FIG-3

CAD Cell #4

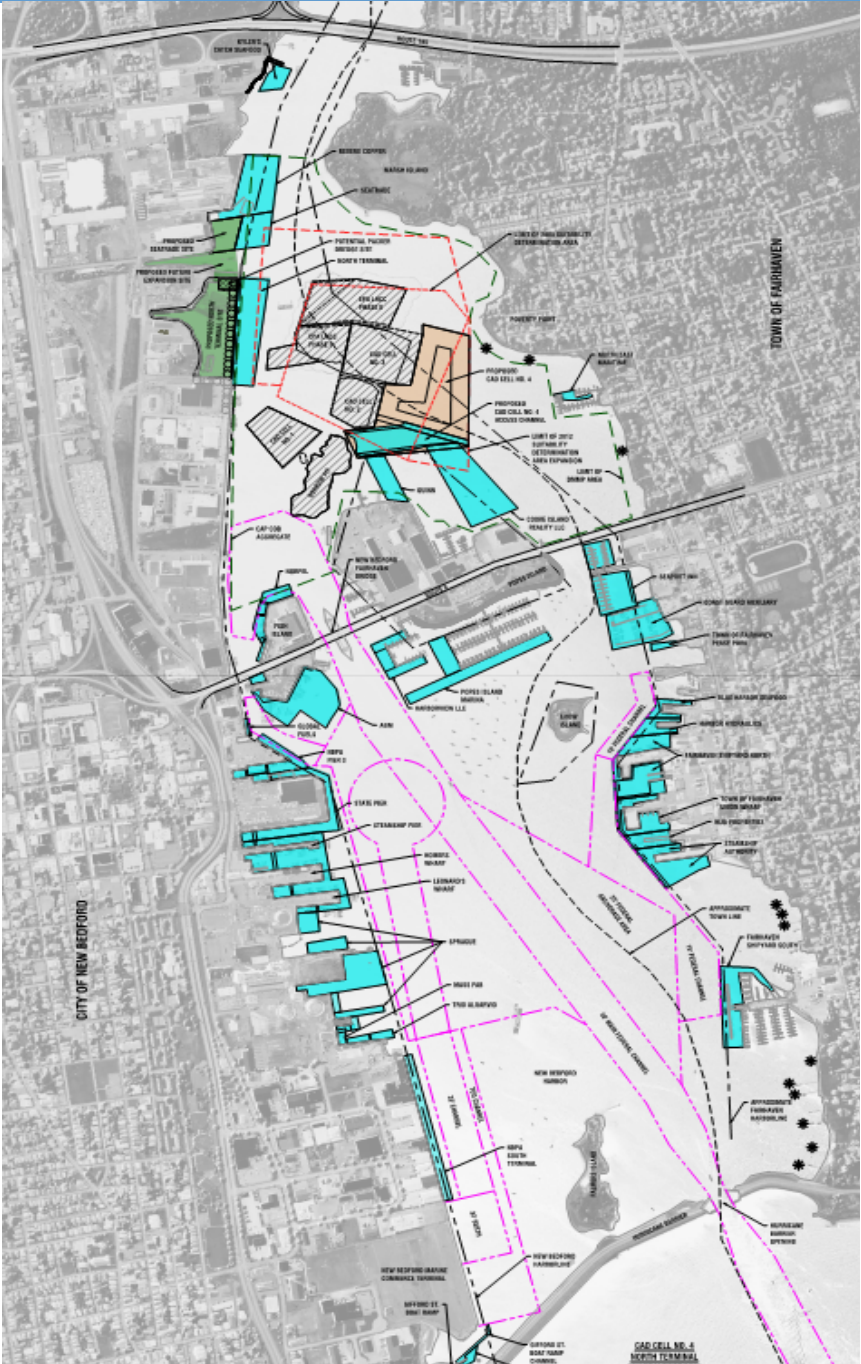
- Capacity for 500,000 cy of dredged sediments
- Includes 50,000 cy for USACE top of CAD cell materials and 30,000 cy contingency
- Includes access channel / improves navigation
- Sediments to be placed in CAD Cell #4:
 - ✓ Significantly lower PCB concentrations compared to surface sediments in surrounding area
 - ✓ Lower levels of PCBs than in EPA CAD Cells



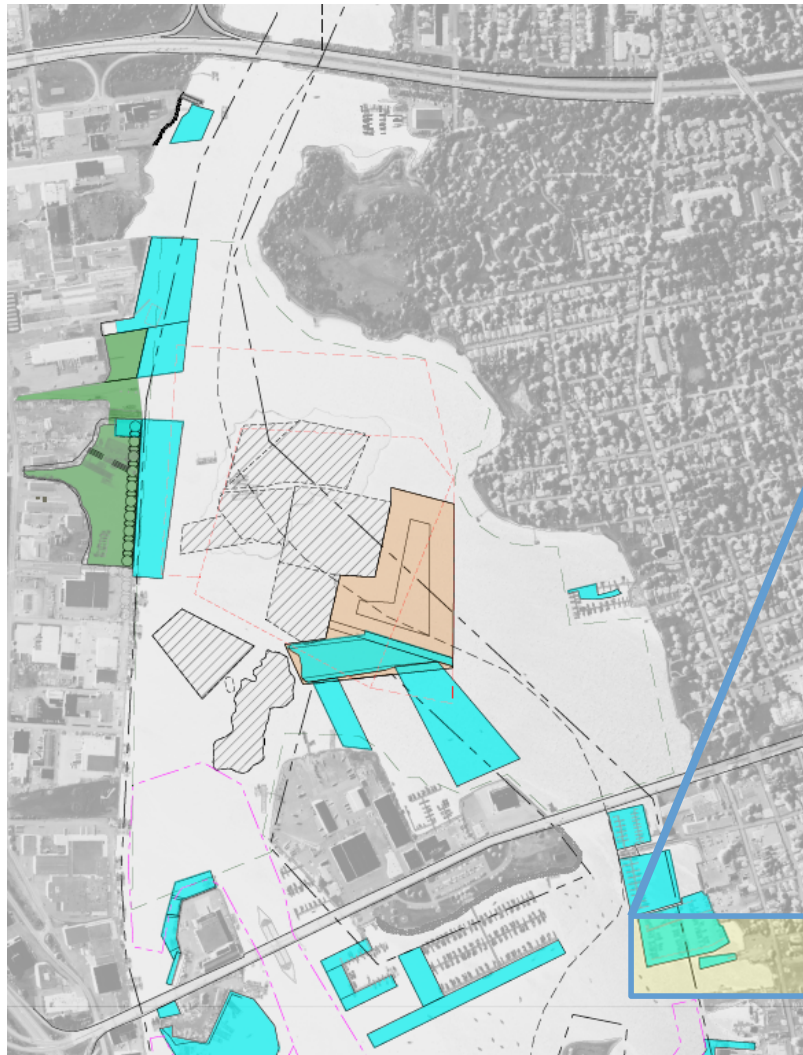
- [illegible]



- [illegible]



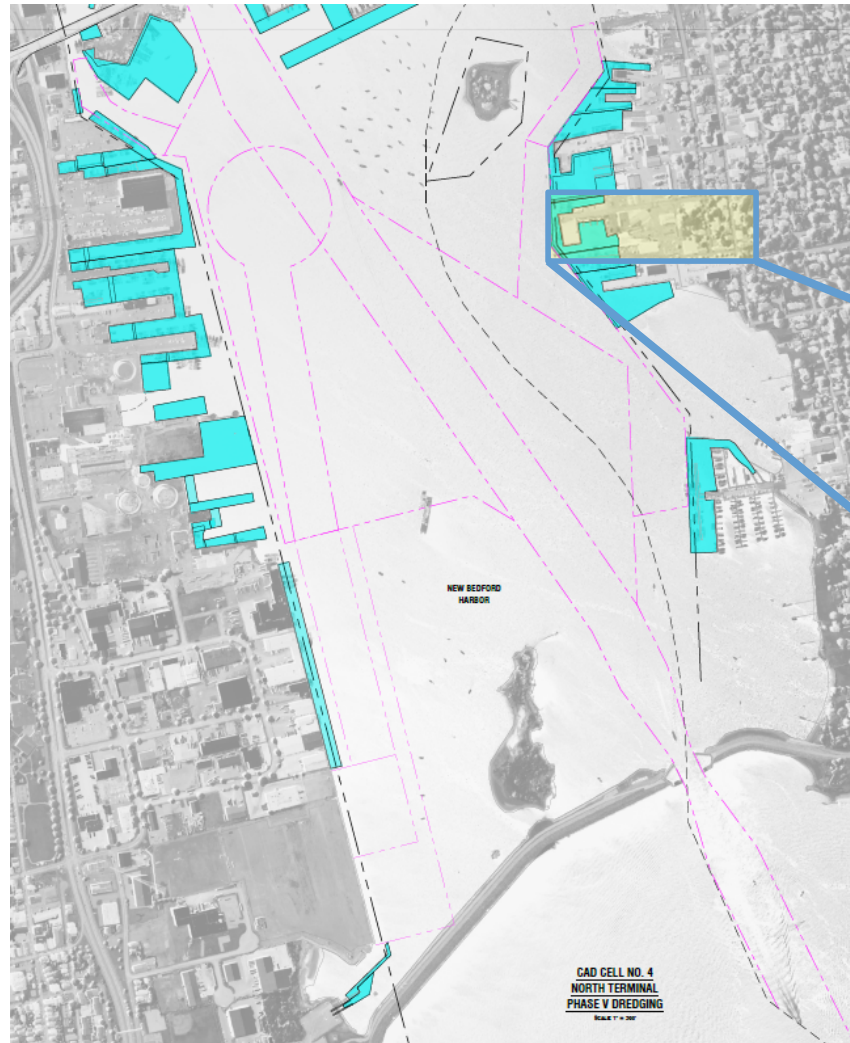
Economic Benefits of Phase V Dredging



Town of Fairhaven
Pease Park



Economic Benefits of Phase V Dredging



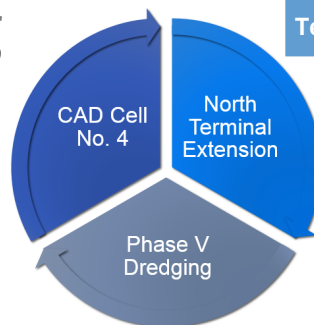
Town of Fairhaven Union Wharf



Project Schedule & Funding

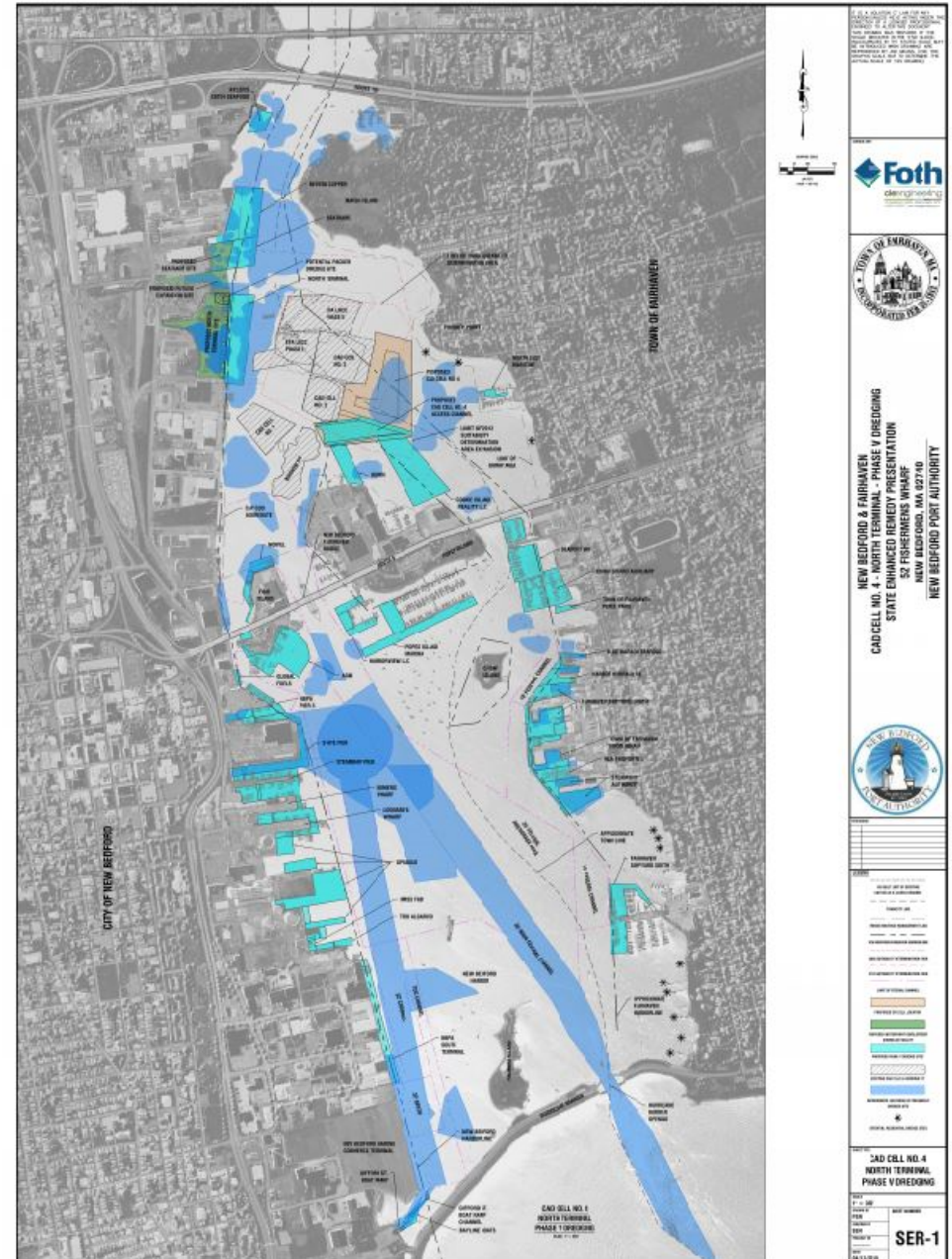
- Synergies between three aspects of single project
- Schedule Drivers:
 - Ties to State's Capital Plan
 - Potential opportunities when CAD cell is ready to accept dredge materials
 - BUILD Grant schedule
- Delays could impact cost to private owners
- \$24M in State funding

Milestone	MONTH-YEAR
Design, Engineering, and Permitting Complete (CAD Cell)	September 2019
Start CAD Cell Construction (Top of CAD)	January 2020
Top of CAD Cell 100% Complete	April 2020
Start CAD Cell Construction (Bottom of CAD)	April 2020
CAD Cell 100% Complete (Bottom of CAD)	October 2020
Start Terminal Construction	Spring 2020
Design, Engineering, and Permitting Complete (Phase V)	July 2020
Start Phase V Dredging	November 2020
Berth Dredging 100% Complete	December 2021
Terminal Construction Complete	Winter 2021-2022



Phase V Dredging

- Maintaining navigational channels and depth is imperative for safe and efficient navigation by all port users and has a significant impact on daily operations for dozens of waterfront businesses.
- This project ensures that the Port of New Bedford/Fairhaven remains a robust, full-service industrial working waterfront.
- Enhanced Clean Up for Harbor
- State funding of \$11M+ for Fairhaven properties/businesses



Thank you for support

- Senators Ed Markey & Elizabeth Warren
- Congressman Bill Keating
- Governor Charlie Baker & Lt. Governor Karyn Polito
- EOHED Secretary Mike Kennealy
- The New Bedford/Fairhaven Delegation, including: Senator Mark Montigny, Chairman Bill Straus, Antonio Cabral, Chris Markey, Paul Schmid, and Chris Hendricks
- Mayor Jon Mitchell & New Bedford Port Authority Commissioners Patricia Lareau, Richie Canastra, Jim Oliveira, Dr. Brian Rothschild, Davis Sullivan, Joseph Tavares
- New Bedford City Council Members Linda M. Morad, Joseph P. Lopes, Brian K. Gomes, Dennis Farias, Maria E. Giesta, Dana Ribeiro, Naomi R.A. Carney, Debora Coelho, Ian Abreu, Hugh Dunn, Scott J. Lima, William Brad Markey

Questions



PHASE V DREDGING



Photo by Ed Pepin