

## **New Bedford Harbor Superfund Site Community Update on Site Activities – March 2017**

### 2017 Harbor Cleanup Activities

- **Contract Update:** The US Army Corps of Engineers awarded a 10-year contract to Jacobs Engineering in the fall of 2016 to complete the implementation of the New Bedford Harbor PCB cleanup. With this contract in place, EPA expects operations, including sampling, dredging, intertidal cleanup and restoration work to continue on a year-round basis.
- **CAD Cell Update:** The next phase of work is set to begin this spring/summer on the New Bedford side of the Lower Harbor, specifically in and around the shipping channel as shown in blue on the attached figure. This work comprises the dredging of approximately 130,000 to 170,000 cubic yards of PCB-contaminated material, followed by disposal in the Lower Harbor CAD Cell. Dredging activity in the blue area on the New Bedford side of the harbor will operate unrestricted Monday - Saturday; the CAD cell disposal activity will be restricted to 6am to 10pm, Monday - Saturday. Activities on Sundays will be limited to maintenance only.
  - This upcoming work is a continuation of the approximately 80,000 cubic yards that were successfully dredged and placed in the Lower Harbor CAD cell in 2016 (shown in yellow on the figure). Post-cleanup samples from these dredged areas shows PCB values well below the required lower harbor cleanup level of 50 ppm, averaging about 13 ppm thus far.
  - Currently, dredging is being performed in the Upper Harbor, near Sawyer Street on the New Bedford side of the river. This material is also being disposed of in the Lower Harbor CAD cell.
  - Air quality data collected from our monitoring network during dredging show that levels of PCBs in air are well below any level of concern. Water quality continues to be monitored during dredge operations to ensure water quality is not affected. The latest results for this data can be found on our website at <https://www.epa.gov/new-bedford-harbor/new-bedford-harbor-cleanup-plans-technical-documents-and-environmental-data#EnvironmentalMonitoringData>.
- **Shoreline (Inter-tidal) Cleanup:** EPA and the Corps of Engineers are currently remediating PCB-contaminated sediment along the shoreline of Riverside Park in New Bedford between Sawyer Street and Coffin Avenue. Once all material above cleanup levels is removed, the area will be restored by placing clean backfill and planting saltmarsh grasses, trees, and shrubs. The majority of this work is scheduled to be completed by June, with the tree and shrub planting occurring in the fall of 2017.
  - Shoreline areas south of Route 195 which are contaminated above cleanup levels (e.g., Marsh Island north shore) are also scheduled for remediation and restoration in 2017.

- EPA Outreach Coordinators: through a cooperative agreement with the City of New Bedford, and working in collaboration with the Community Economic Development Council (CEDC) in New Bedford, EPA hired local residents to conduct outreach and educate the public on EPA's seafood consumption restrictions and recommendations last summer. This outreach was part of the 2015 Community Involvement Plan, which focused on methods to educate the general public about the harbor cleanup and seafood restrictions. Along with the City of New Bedford and CEDC, EPA is planning to continue this initiative in the summer of 2017.

EPA continues to update the New Bedford Harbor web page. New documents and information can be found on the right hand side of the page under our "What's New" box.

For additional information, please visit our website at [www.epa.gov/nbh](http://www.epa.gov/nbh) or contact:

Kelsey O'Neil  
EPA Community Involvement Coordinator  
[oneil.kelsey@epa.gov](mailto:oneil.kelsey@epa.gov)  
617-918-1003

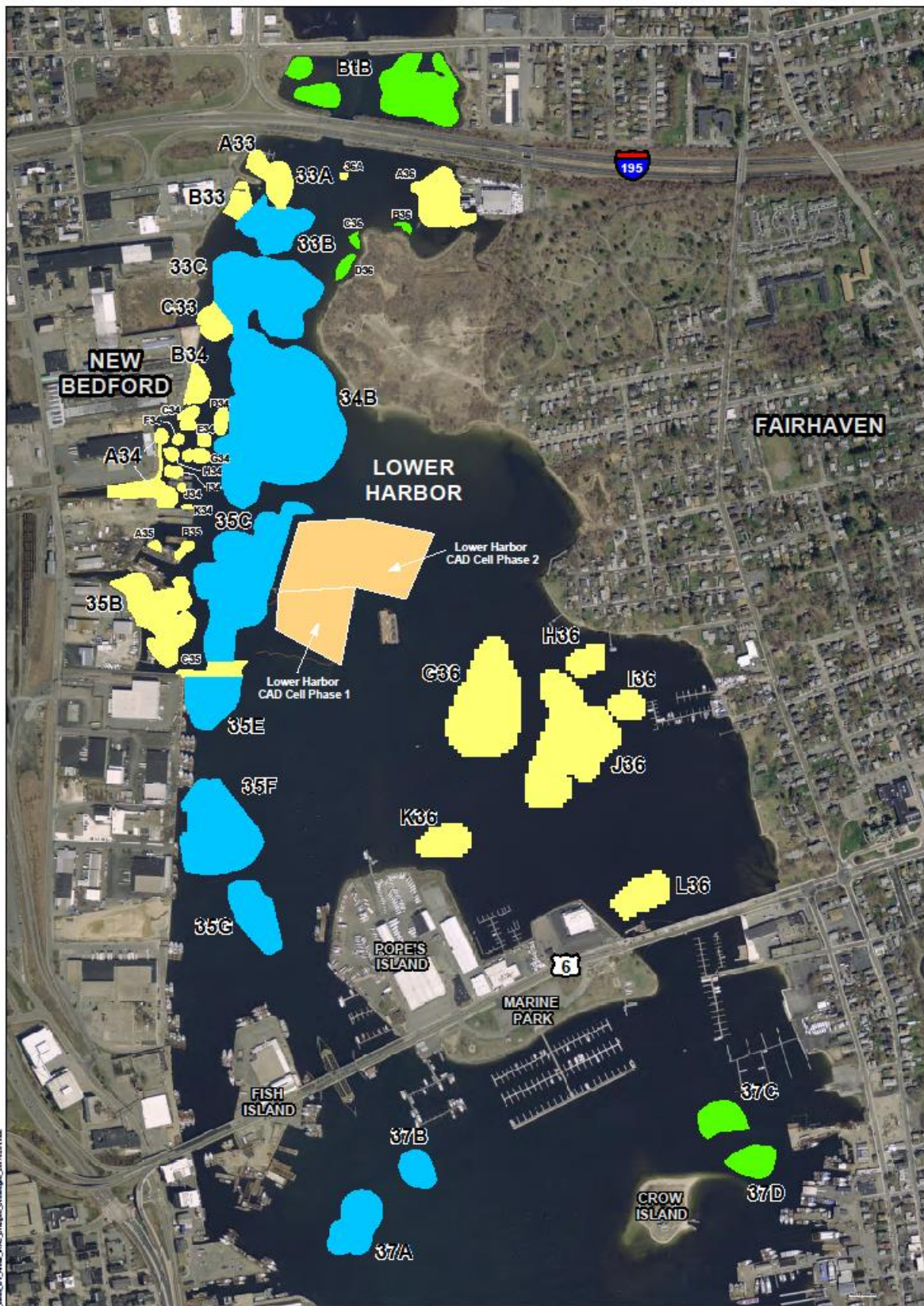


Sediment dredging near Riverside Park



Mechanical dredging in the Upper Harbor in early 2017





**Legend**

- EPA CAD Cell
- 2017 Dredging
- Dredging (sequencing to be determined)
- Dredging Completed

Note: Dredged/undredged areas projected as of February 2017

0 275 550 Feet 1:5,600

Aerial Photography MASSGIS 2014



**JACOBS**

Lower Harbor Dredge  
Areas by Contract

New Bedford Harbor Superfund Site

Date: 2/6/2017

Figure 4-1