

# Massachusetts Division of Marine Fisheries - Designated Shellfish Growing Area



Produced: Sep. 10, 2009



Shellfish Area Classification			
	Approved		Conditionally Restricted
	Conditionally Approved		Prohibited
			Restricted
			Management Close

## Map Features Legend

	MUNICIPAL BOUNDARY		Cranberry Bog		Reservoir
	Marsh/Bog		Salt Marsh		Tidal Flats
	Wooded marsh		Open Water		Beach/Dune

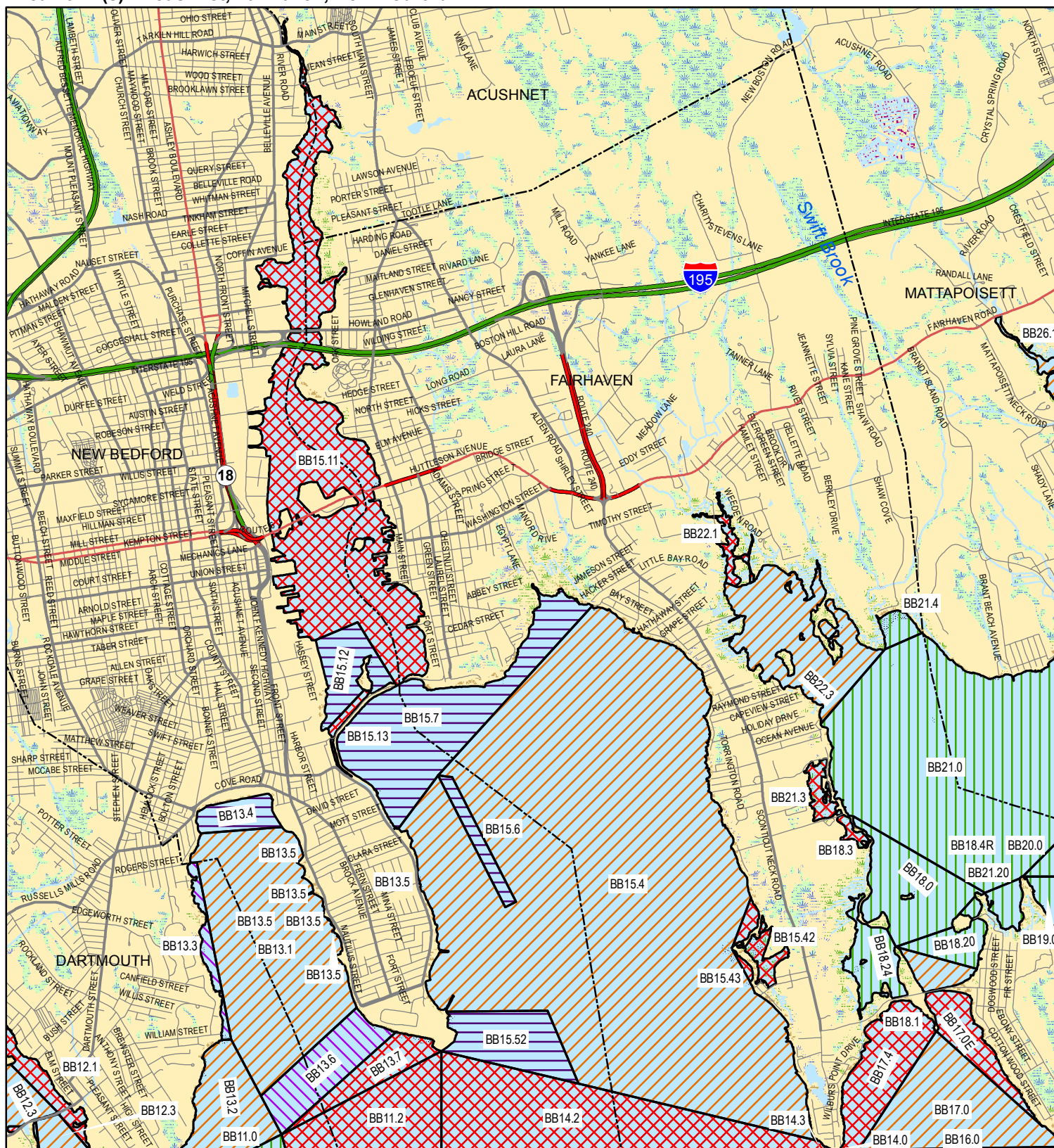
Growing Area Code: BB15

Area Name: NEW BEDFORD/FAIRHAVEN HARBOR

Area Town(s): Acushnet, Fairhaven, New Bedford

0.7

Miles



This product is for planning and educational purposes only. It is not to be used by itself for legal boundary definition or regulatory interpretation.

# Massachusetts Division of Marine Fisheries - Designated Shellfish Growing Area



Shellfish Area Classification					
	Approved		Conditionally Restricted		Restricted
	Conditionally Approved		Prohibited		Management Close

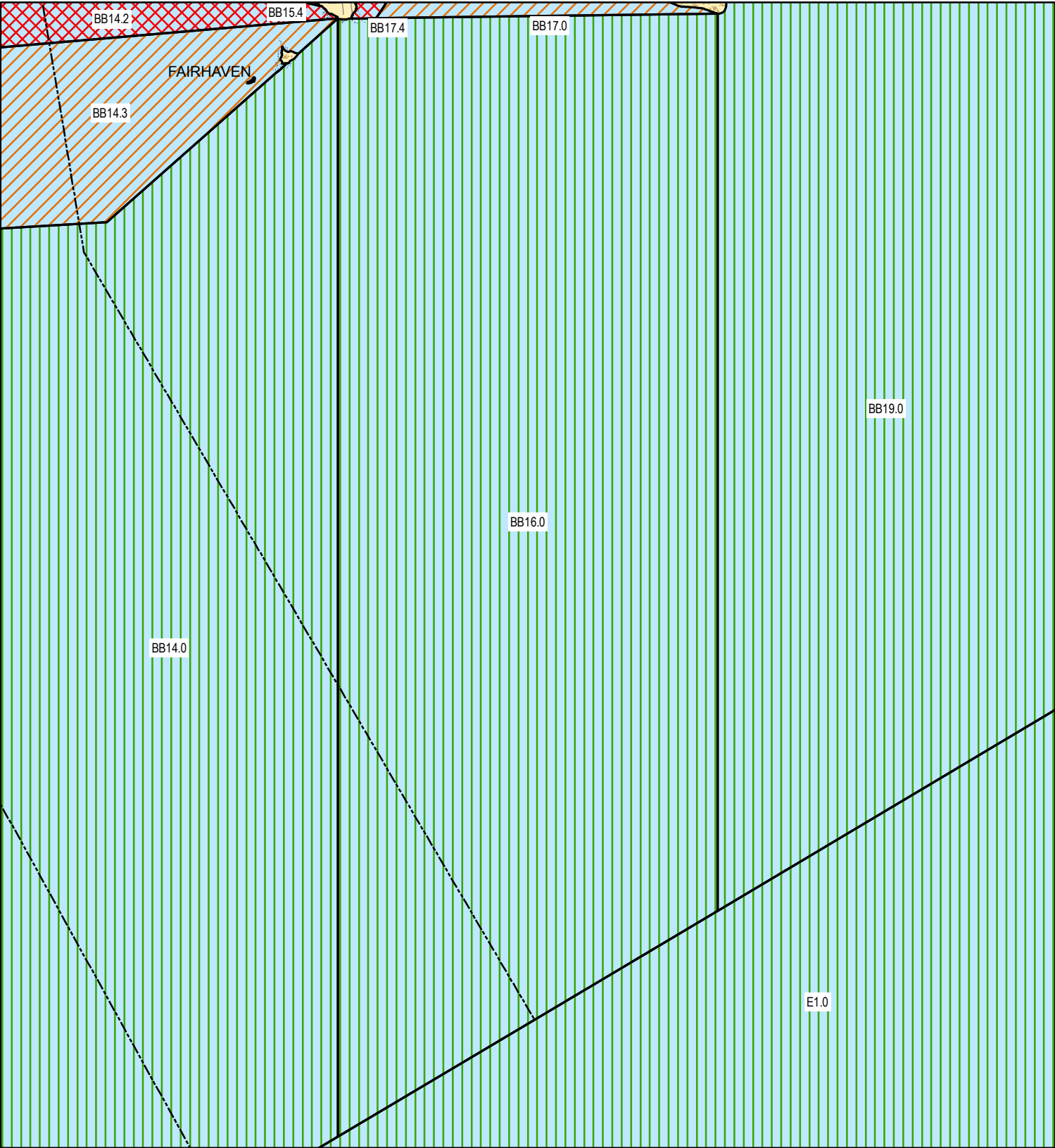


Produced: Sep. 10, 2009

Growing Area Code: BB16  
Area Name: FAIRHAVEN SOUTH COASTAL  
Area Town(s): Fairhaven, New Bedford

Map Features Legend					
	MUNICIPAL BOUNDARY		Cranberry Bog		Reservoir
	Marsh/Bog		Salt Marsh		Tidal Flats
	Wooded marsh		Open Water		Beach/Dune

0.5  
Miles



This product is for planning and educational purposes only. It is not to be used by itself for legal boundary definition or regulatory interpretation.

# Massachusetts Division of Marine Fisheries - Designated Shellfish Growing Area



Shellfish Area Classification			
	Approved		Conditionally Restricted
	Conditionally Approved		Prohibited
			Restricted
			Management Close

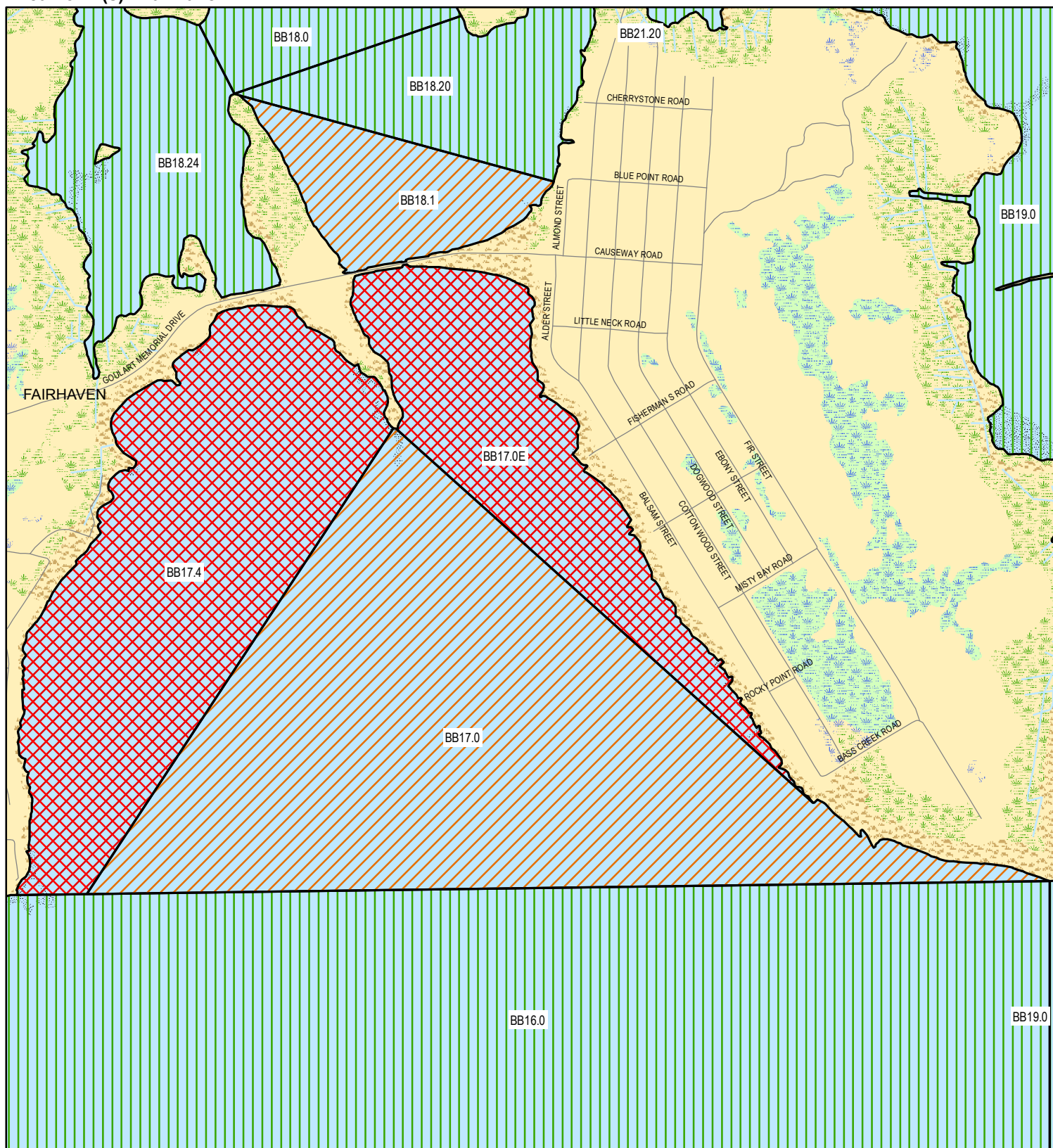


Produced: Sep. 10, 2009

**Growing Area Code: BB17**  
**Area Name: WEST ISLAND SOUTH**  
**Area Town(s): Fairhaven**

0.2

Miles



*This product is for planning and educational purposes only. It is not to be used by itself for legal boundary definition or regulatory interpretation.*



# Massachusetts Division of Marine Fisheries - Designated Shellfish Growing Area



Shellfish Area Classification					
	Approved		Conditionally Restricted		Restricted
	Conditionally Approved		Prohibited		Management Close



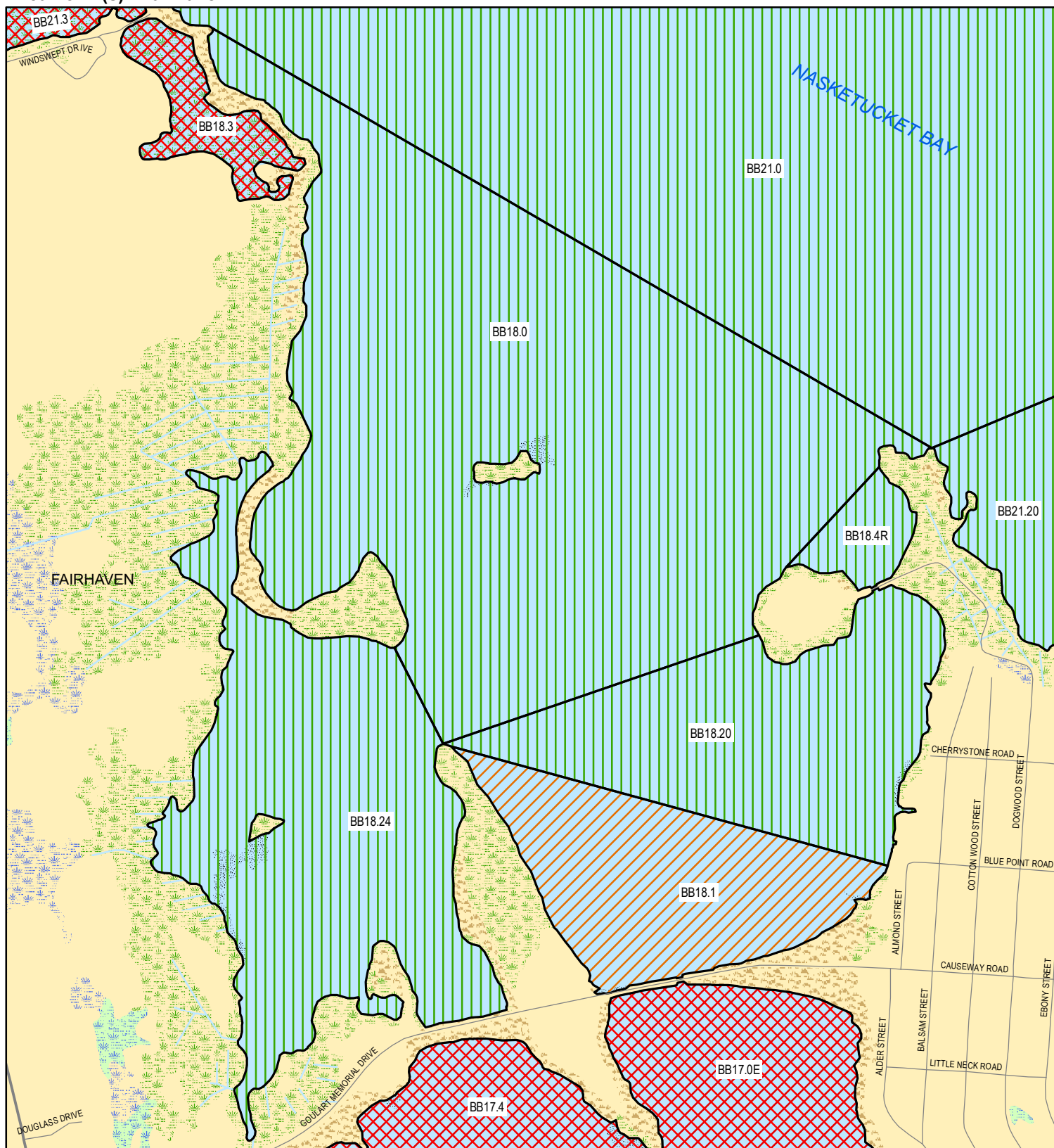
Produced: Sep. 10, 2009

**Growing Area Code: BB18**  
**Area Name: WEST ISLAND NORTH**  
**Area Town(s): Fairhaven**

## Map Features Legend

	MUNICIPAL BOUNDARY		Cranberry Bog		Reservoir
	Marsh/Bog		Salt Marsh		Tidal Flats
	Wooded marsh		Open Water		Beach/Dune

0.1  
Miles



*This product is for planning and educational purposes only. It is not to be used by itself for legal boundary definition or regulatory interpretation.*

# Massachusetts Division of Marine Fisheries - Designated Shellfish Growing Area



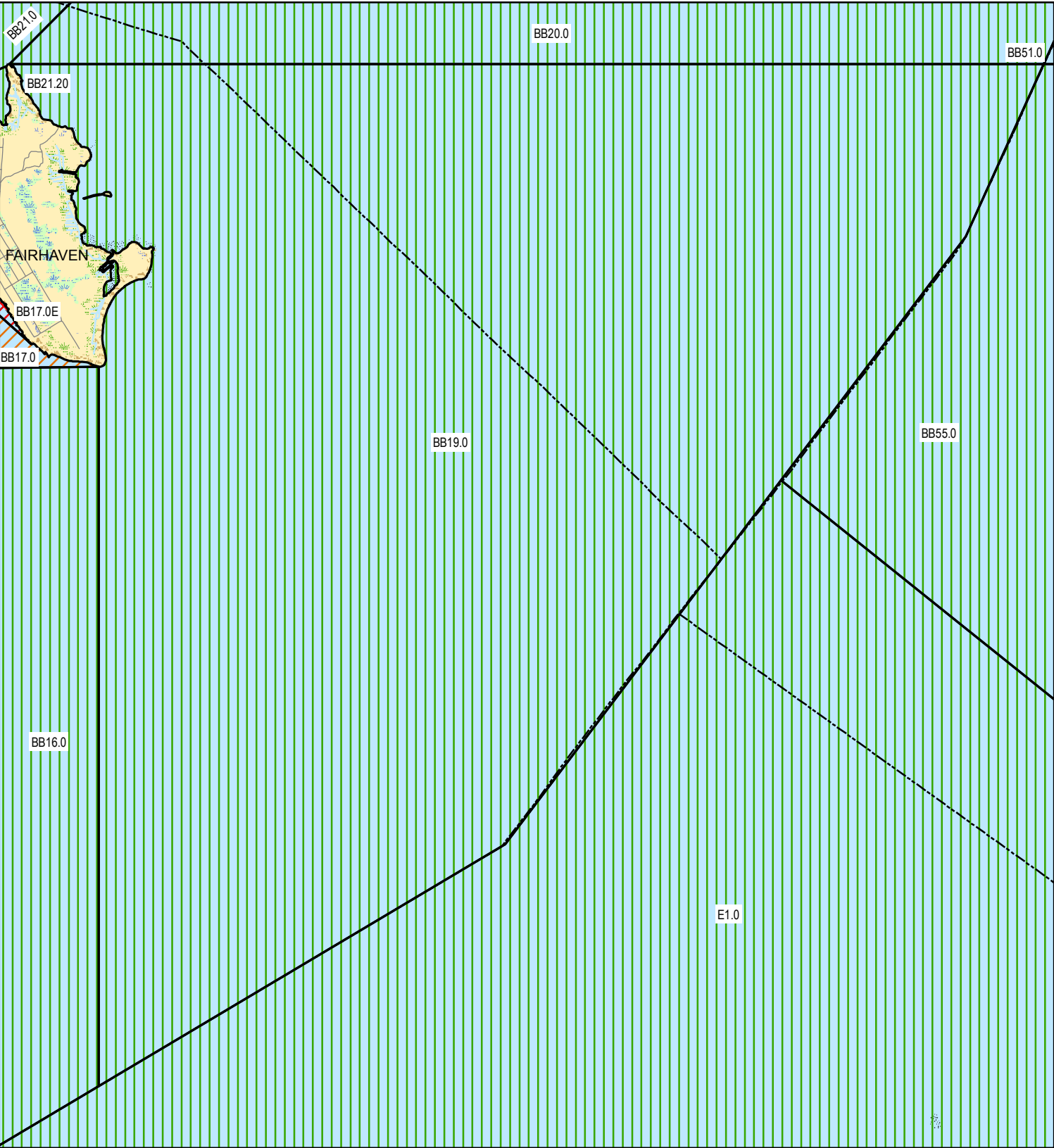
Shellfish Area Classification			
	Approved		Conditionally Restricted
	Conditionally Approved		Prohibited
			Restricted
			Management Close



Produced: Sep. 10, 2009

Growing Area Code: BB19  
Area Name: WEST ISLAND EAST COASTAL  
Area Town(s): Fairhaven, Mattapoisett

0.5  
Miles



This product is for planning and educational purposes only. It is not to be used by itself for legal boundary definition or regulatory interpretation.

# Massachusetts Division of Marine Fisheries - Designated Shellfish Growing Area



Shellfish Area Classification			
	Approved		Conditionally Restricted
	Conditionally Approved		Prohibited
			Restricted
			Management Close



Produced: Sep. 10, 2009

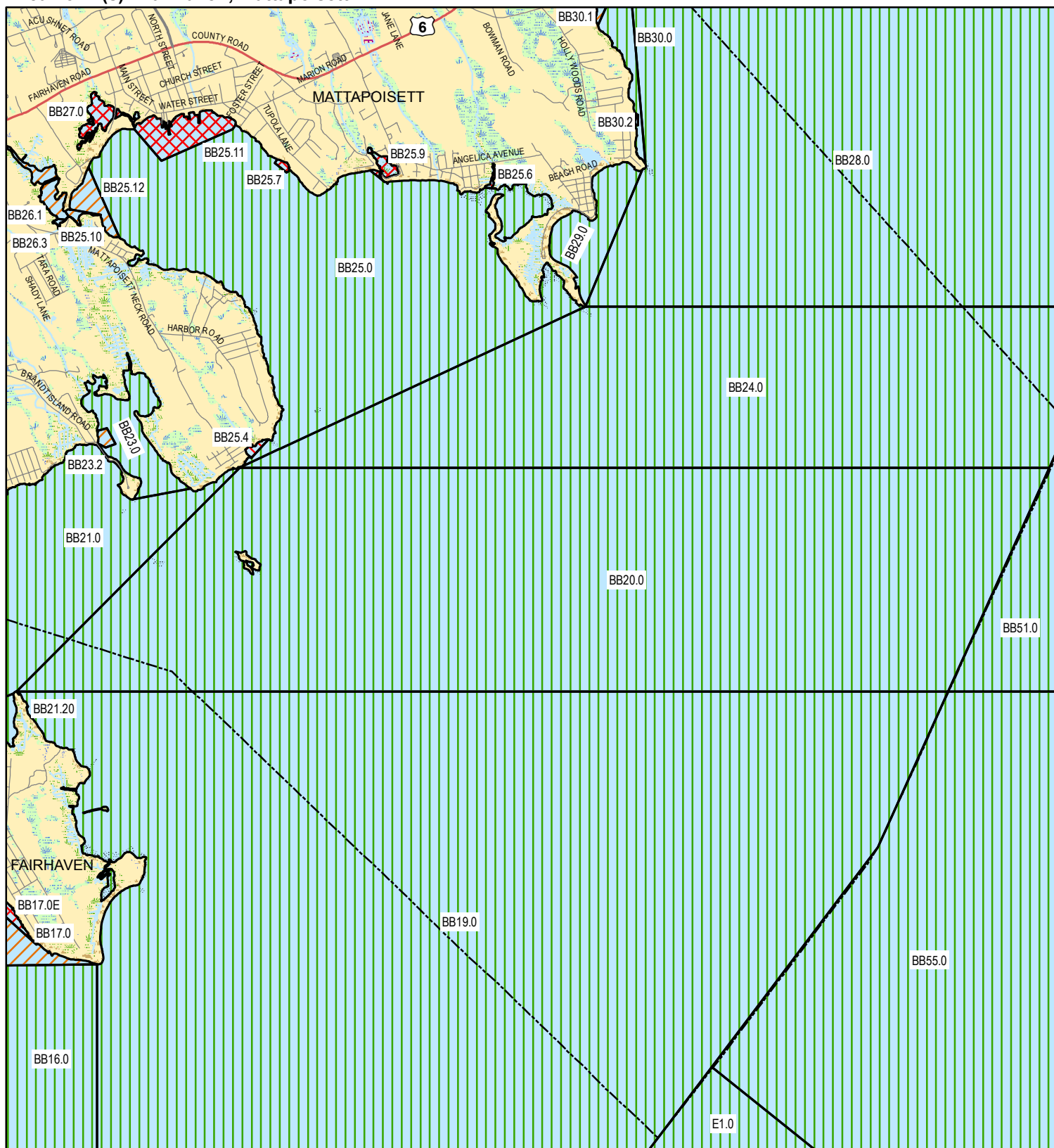
Growing Area Code: BB20

Area Name: FAIRHAVEN EAST COASTAL

Area Town(s): Fairhaven, Mattapoisett

0.5

Miles



This product is for planning and educational purposes only. It is not to be used by itself for legal boundary definition or regulatory interpretation.

# Massachusetts Division of Marine Fisheries - Designated Shellfish Growing Area



Shellfish Area Classification			
	Approved		Conditionally Restricted
	Conditionally Approved		Prohibited
			Restricted
			Management Close

## Map Features Legend

	MUNICIPAL BOUNDARY		Cranberry Bog		Reservoir
	Marsh/Bog		Salt Marsh		Tidal Flats
	Wooded marsh		Open Water		Beach/Dune



Produced: Sep. 10, 2009

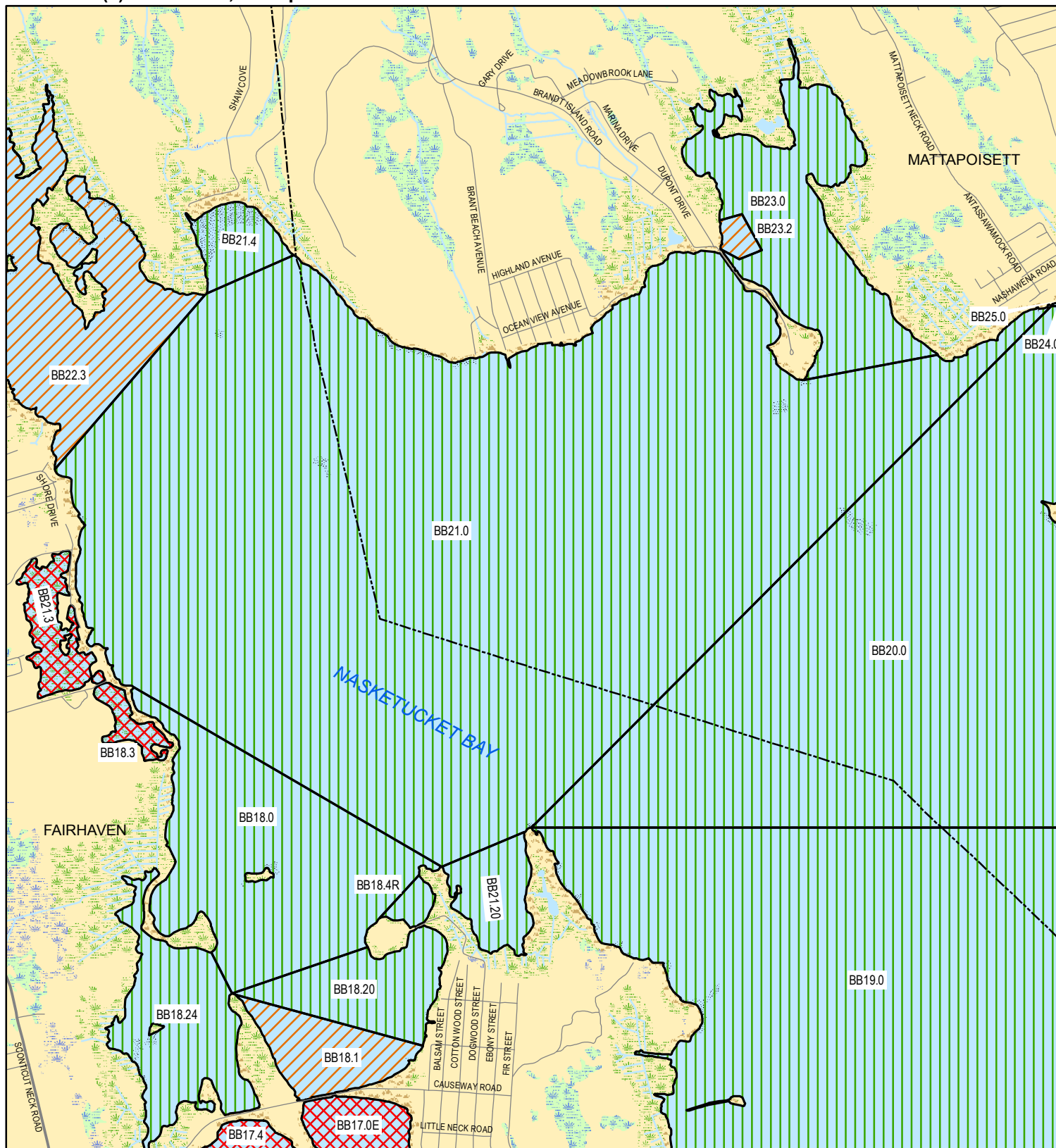
Growing Area Code: BB21

Area Name: NASKETUCKET BAY

Area Town(s): Fairhaven, Mattapoissett

0.2

Miles



This product is for planning and educational purposes only. It is not to be used by itself for legal boundary definition or regulatory interpretation.



# Massachusetts Division of Marine Fisheries - Designated Shellfish Growing Area



Shellfish Area Classification			
	Approved		Conditionally Restricted
	Conditionally Approved		Prohibited
			Restricted
			Management Close

## Map Features Legend

	MUNICIPAL BOUNDARY		Cranberry Bog		Reservoir
	Marsh/Bog		Salt Marsh		Tidal Flats
	Wooded marsh		Open Water		Beach/Dune



Produced: Sep. 10, 2009

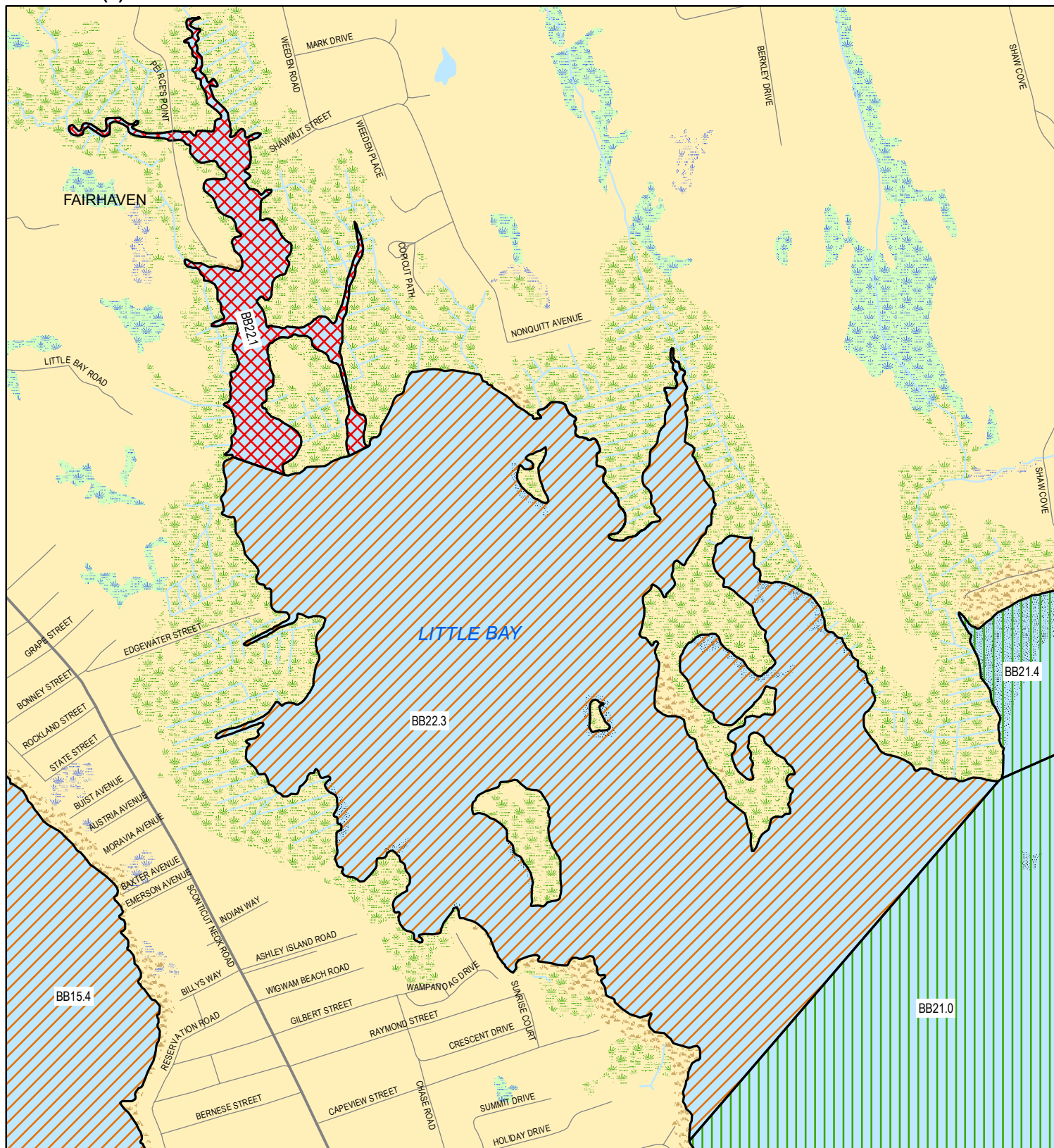
Growing Area Code: BB22

Area Name: LITTLE BAY

Area Town(s): Fairhaven

0.1

Miles









This product is for planning and educational purposes only. It is not to be used by itself for legal boundary definition or regulatory interpretation.



# Massachusetts Division of Marine Fisheries - Designated Shellfish Growing Area



**Shellfish Area Classification**

	Approved		Conditionally Restricted		Restricted
	Conditionally Approved		Prohibited		Management Close



Produced: Sep. 10, 2009

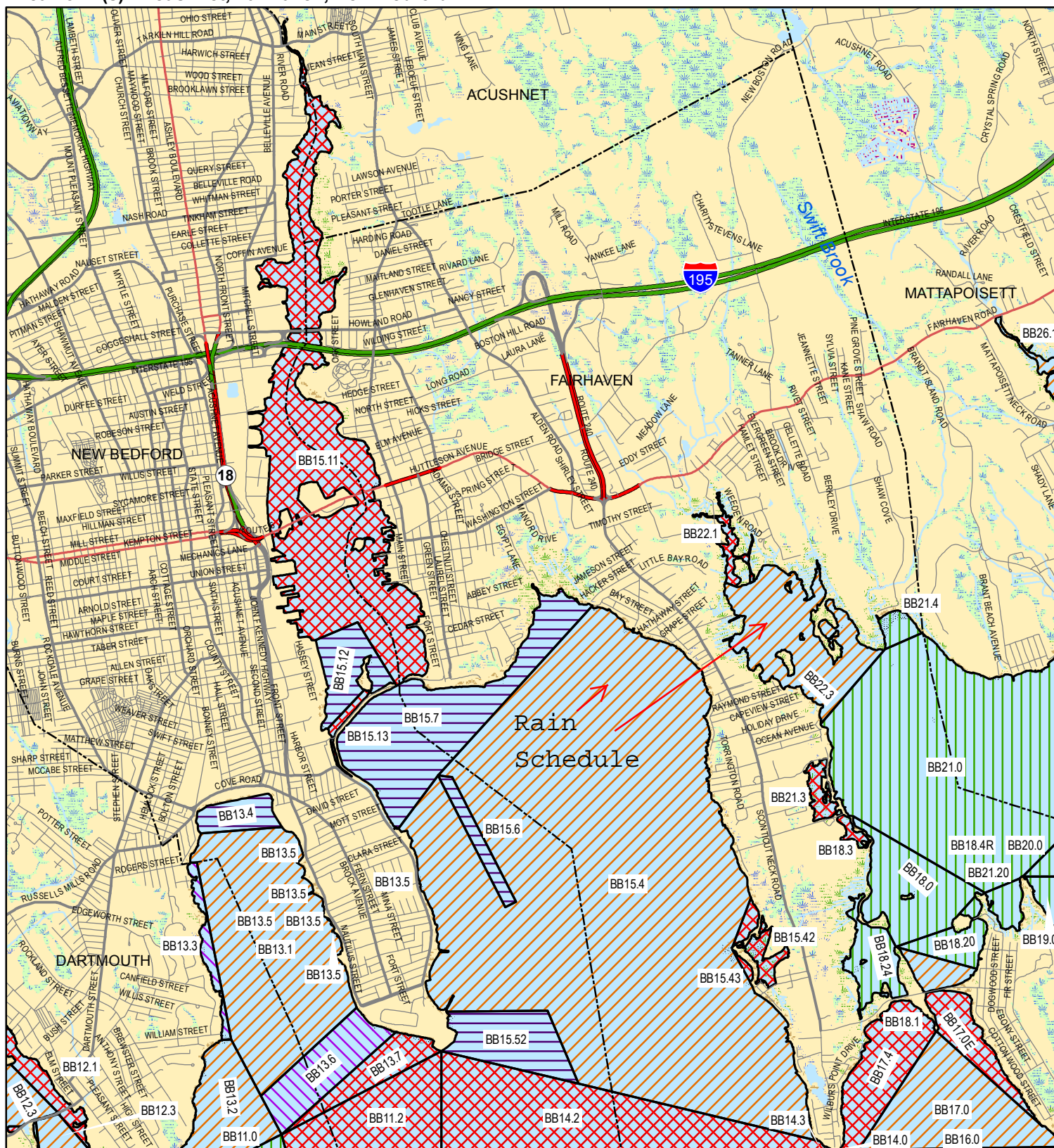
**Growing Area Code: BB15**

**Area Name: NEW BEDFORD/FAIRHAVEN HARBOR**

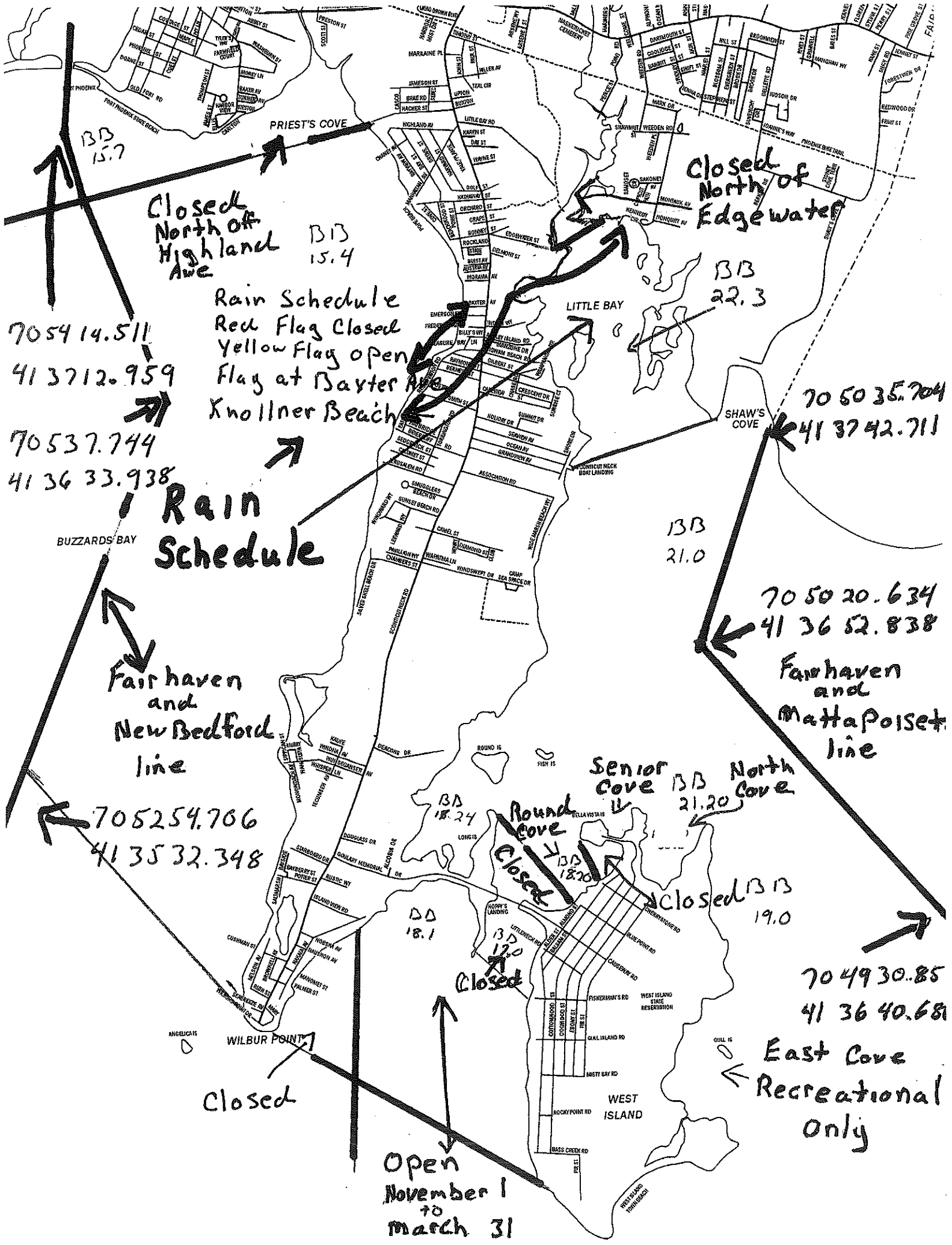
**Area Town(s):** Acushnet, Fairhaven, New Bedford

0.7

Miles



*This product is for planning and educational purposes only. It is not to be used by itself for legal boundary definition or regulatory interpretation.*



BD 15.7

7054 14.511  
4137 12.959  
70537.744  
4136 33.938

Closed North of Highland Ave

BD 15.4

Rain Schedule  
Red Flag Closed  
Yellow Flag open  
Flag at Baxter Ave  
Knollner Beach

Rain Schedule

Fairhaven and New Bedford line

705254.706  
4135 32.348

Closed North of Edgewater

BD 22.3

7050 35.704  
4137 42.711

SHAW'S COVE

BD 21.0

7050 20.634  
4136 52.838  
Fairhaven and Mattapoisett line

Senior Cove North Cove

BD 21.20

Round Cove

BD 18.24

Closed BD 19.0

7049 30.85  
4136 40.68

East Cove Recreational only

Open November 1 to March 31

Closed

Closed

Closed

WILBUR POINT

WEST ISLAND

WEST ISLAND TOWN