

# PROPOSED AUTO DEALERSHIP

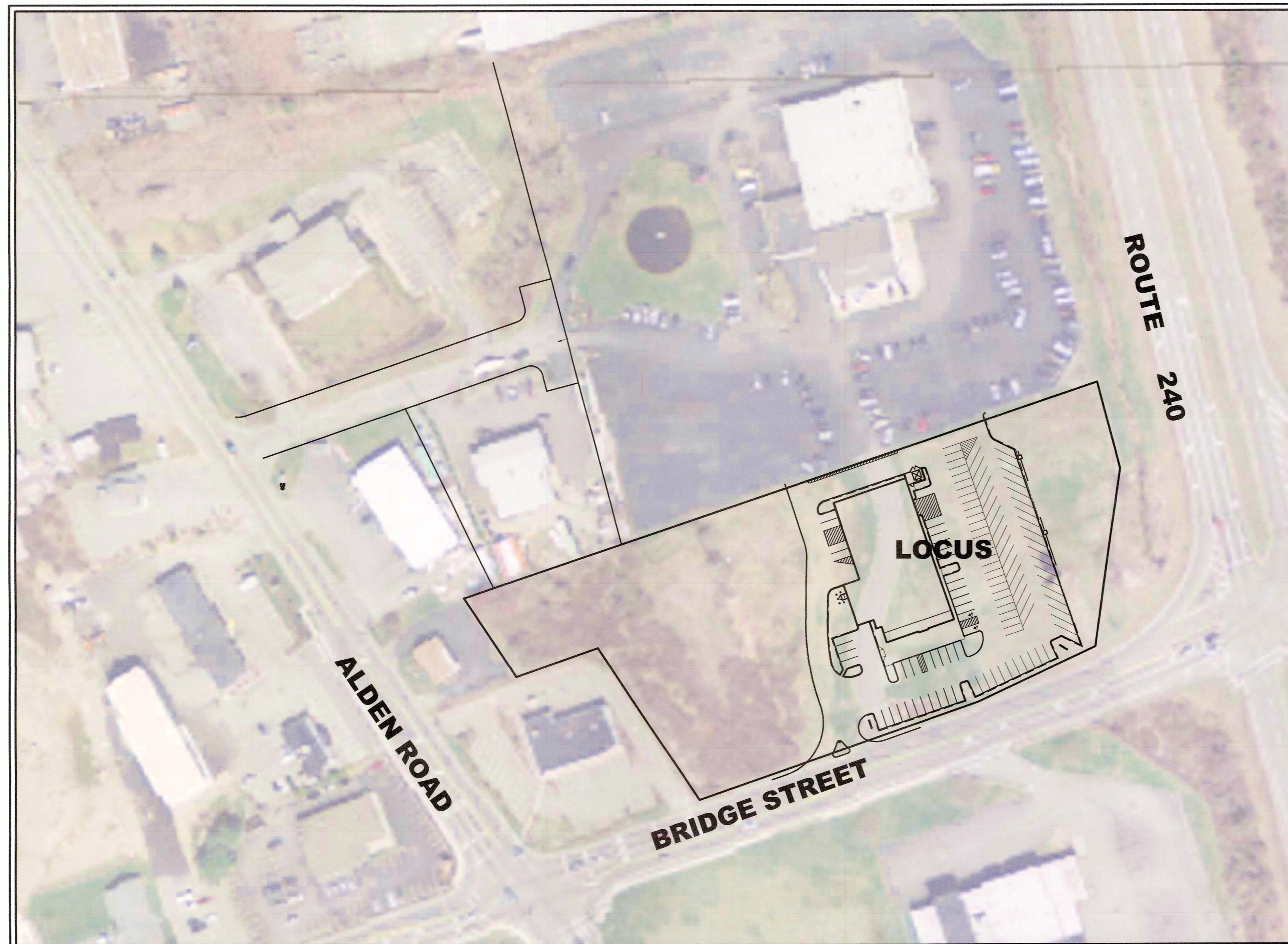
## 250 BRIDGE STREET

### FAIRHAVEN, MASSACHUSETTS

#### SCHEDULE OF DRAWINGS

SHEET NUMBER	PLAN TITLE
1.	TITLE SHEET
2.	EXISTING CONDITIONS
3.	SITE LAYOUT PLAN
4.	GRADING AND DRAINAGE PLAN
5.	UTILITIES PLAN
6.	LIGHTING PLAN
7.	LANDSCAPING PLAN
8.	WETLAND REPLICATION PLAN
9.	SITE DETAILS
10.	VEHICLE MOVEMENT PLAN

- ALL SITE DEVELOPMENTS, INCLUDING GRADING, DRAINAGE AND LANDSCAPING, SHALL BE CARRIED OUT IN ACCORDANCE WITH THIS PLAN SET MARKED "EXHIBIT A".
- A VARIATION IS REQUESTED TO STORMWATER MANAGEMENT - SECTION 198-31.1 A(1)(a)(2), TO ALLOW THE INCREASE IN VOLUME OF RUNOFF DUE TO THE D SOIL AND NEAR SURFACE GROUND WATER.
- A VARIATION IS REQUESTED TO STORMWATER MANAGEMENT - SECTION 198-31.1 B(2)(a)(h) & (j), TO NOT PROVIDE SOIL LOGS SINCE THE INFILTRATION IS NOT PROPOSED DUE TO D SOILS AND NEAR SURFACE GROUND WATER.
- A VARIATION IS REQUESTED TO STORMWATER MANAGEMENT - SECTION 198-31.1 C(2)(g)(6), TO ALLOW THE SIDE SLOPES TO BE 2:1 TO MINIMIZE IMPACTS TO WETLANDS.
- A VARIATION IS REQUESTED TO STORMWATER MANAGEMENT - SECTION 198-31.1 C(2)(k), TO ALLOW VARIATION TO VOLUME CONTROL.
- A VARIATION IS REQUESTED TO STORMWATER MANAGEMENT - SECTION 198-31.1 C(3), TO ALLOW THE LOW IMPACT DEVELOPMENT (LID) DESIGN MEET THE BMP REQUIREMENTS, AS REQUESTED BY THE CONSERVATION COMMISSION.

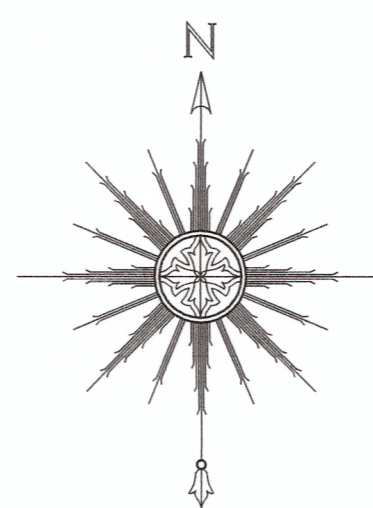


#### OWNER, DEVELOPER, & APPLICANT:

CARAPACE, LLC  
2 STAR OF THE SEA DRIVE  
DARTMOUTH, MA 02748

#### DEVELOPMENT TEAM

FUNCTION	TEAM MEMBER
DEVELOPER	CARAPACE, LLC
ENGINEER / AGENT	PRIME ENGINEERING, INC.



SITE LOCUS IS REFERENCED AS FAIRHAVEN ASSESSOR'S  
MAP 36 LOT 15

THE DEED IS RECORDED IN THE BRISTOL COUNTY REGISTRY  
OF DEED BOOK 6368 PAGE 325

NEIGHBORHOOD LOCUS PLAN  
SCALE: 1"=80'

**APRIL 27, 2015**  
**REVISED JULY 16, 2019**

#### PREPARED BY:

  
**PRIME ENGINEERING**  
INC.

CIVIL ENGINEERING—LAND SURVEYING—ENVIRONMENTAL ASSESSMENT  
P.O. BOX 1088, 350 BEDFORD STREET, LAKEVILLE, MA 02347  
TEL: 508.947.0050 FAX: 508.947.2004



MAP 36 LOT 15C  
N/F  
THE WHALER REALTY TRUST  
ROBERT W. PARKER

MAP 36 LOT 15F  
N/F  
STEPHEN &  
CHERYL ALVES

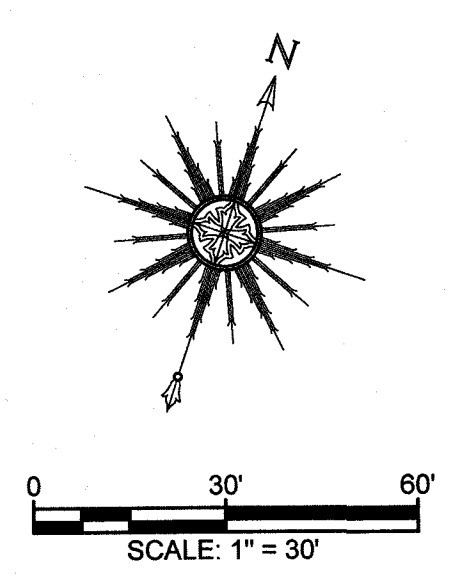
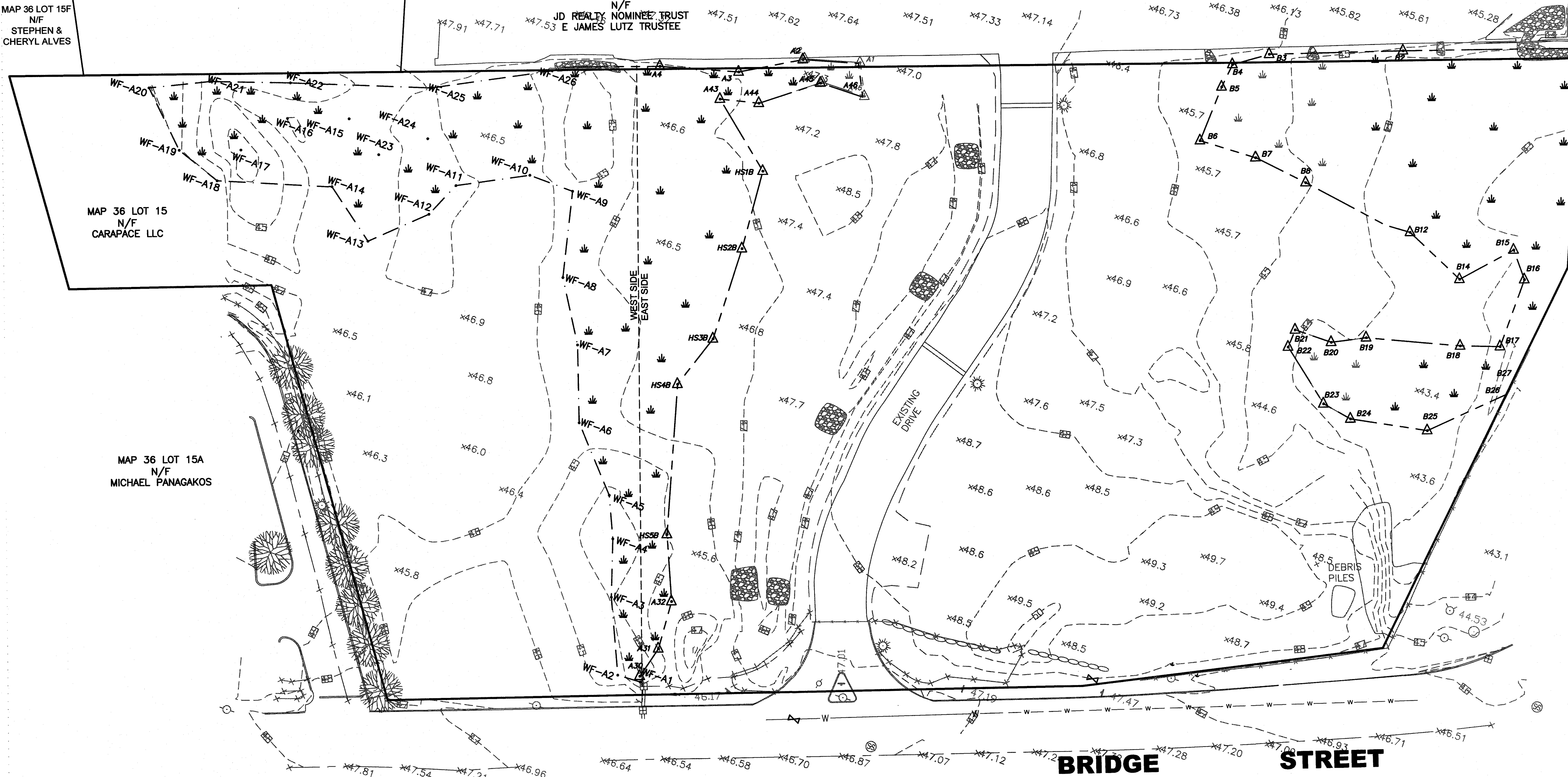
MAP 36 LOT 15C  
N/F  
JD REALTY NOMINEE TRUST  
E JAMES LUTZ TRUSTEE

MAP 36 LOT 15  
N/F  
CARAPACE LLC

MAP 36 LOT 15A  
N/F  
MICHAEL PANAGAKOS

**NOTES:**

THE WESTERN WETLAND LINE (FLAGS WF-A1 TO WF-A26) WERE FLAGGED IN JULY 2014 BY BRANDON FANEUF OF ECOSYSTEMS SOLUTIONS. THE EASTERN WETLAND LINE (HS1B YO HSSB) WAS DELINEATED SEVERAL YEARS AGO BY PETER FLETCHER AND JOHN ROCKWELL. BOTH LINES WERE CONFIRMED BY THE FAIRHAVEN CONSERVATION COMMISSION IN 2015 BUT THIS APPROVAL HAS LAPSED. THE LINES HAVE BE RESTAKED IN APRIL 2019.



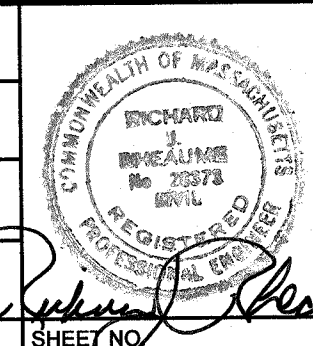
REV.	DATE	DESCRIPTION	BY	APP.
8	7-16-19	NEW BUILDING FOOTPRINT/SITE LAYOUT	JAG	RJR
5	6-24-19	NEW BUILDING FOOTPRINT/SITE LAYOUT	JAG	RJR
4	4-26-19	NEW BUILDING FOOTPRINT/SITE LAYOUT	JAG	RJR
3	9-4-15	GENERAL REVISIONS	TRW	RJR
2	8-25-15	REVISIONS PER PLANNING BOARD	EKW	RJR
1	7-10-15	GENERAL REVISIONS	EKW	RJR

DRAWING TITLE		<b>EXISTING CONDITIONS</b>		SCALE:	1" = 30'
PROJECT		<b>250 BRIDGE STREET FAIRHAVEN, MASSACHUSETTS</b>		DATE:	APRIL 27, 2015
CLIENT		<b>CARAPACE, LLC FAIRHAVEN, MASSACHUSETTS</b>		DRAWN BY:	EKW/TRW
DESIGNED BY:		RJR		CHECKED BY:	RJR
APPROVED BY:		RJR		PROJECT NO.	19830101

<b>PRIME ENGINEERING</b>	P.O. BOX 1088 350 BEDFORD ST. LAKEVILLE, MA 02347 TEL: 508.947.0050 FAX: 508.947.2004
--------------------------	---

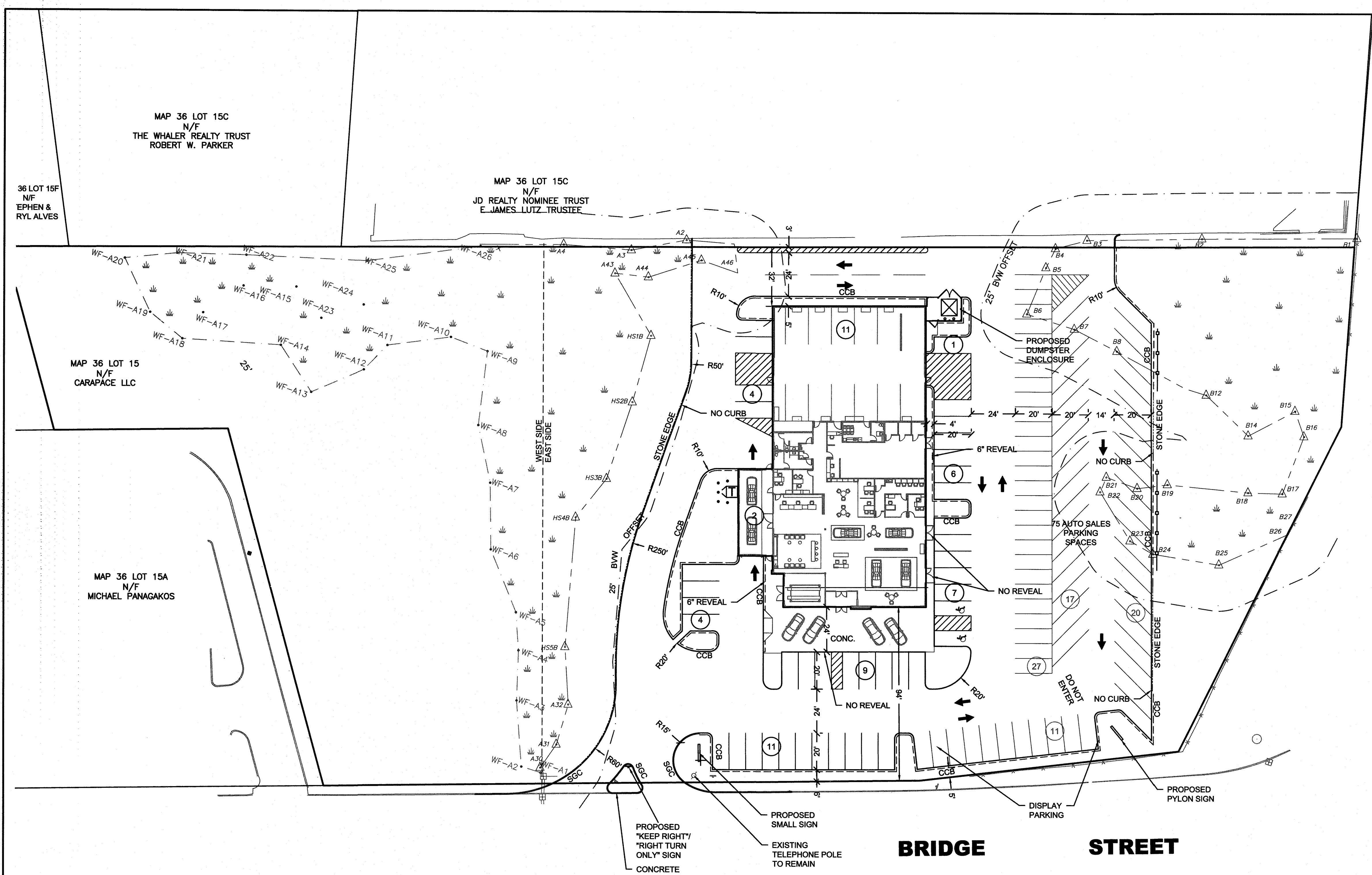


ZONING SUMMARY TABLE

INDUSTRIAL ZONE

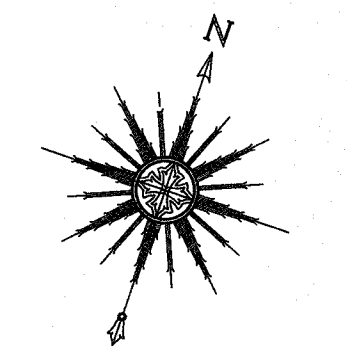
CRITERIA	REQUIRED	PROVIDED
MIN. TOTAL AREA (SF)	50,000 SF	173,804 SF
MIN. UPLAND AREA (SF)	35,000 SF	131,438 SF
MIN. FRONTAGE (LF)	140 LF	487.28 LF
BLDG FRONT SETBACK (LF)	50'	94'
BLDG SIDE SET BACK (LF)	25'	32'
BLDG REAR SETBACK (LF)	50'	N/A
BLDG HEIGHT (LF)	40'	35'
PARKING SETBACK (LF)	50'	5'
MAX. IMPERVIOUS COVERAGE	65%	43%
MAX. BLDG COVERAGE	25%	8.3%
REQUIRED PARKING 1 SPACE PER 250 S.F. GLFA (13,650 / 250 =55)	55	55

\* REQUIRES A VARIANCE



ROUTE 240

BRIDGE STREET



0 30' 60'  
SCALE: 1" = 30'

REV.	DATE	DESCRIPTION	BY	APP.
6	7-16-19	NEW BUILDING FOOTPRINT/SITE LAYOUT	JAG	RJR
5	6-24-19	NEW BUILDING FOOTPRINT/SITE LAYOUT	JAG	RJR
4	4-26-19	NEW BUILDING FOOTPRINT/SITE LAYOUT	JAG	RJR
3	9-4-15	GENERAL REVISIONS	TRW	RJR
2	8-25-15	REVISIONS PER PLANNING BOARD	EKW	RJR
1	7-10-15	GENERAL REVISIONS	EKW	RJR

DRAWING TITLE: **SITE LAYOUT**

PROJECT: **250 BRIDGE STREET  
FAIRHAVEN, MASSACHUSETTS**

CLIENT: **CARAPACE, LLC  
FAIRHAVEN, MASSACHUSETTS**

SCALE: 1" = 30'

DATE: APRIL 12, 2019

DRAWN BY: JAG

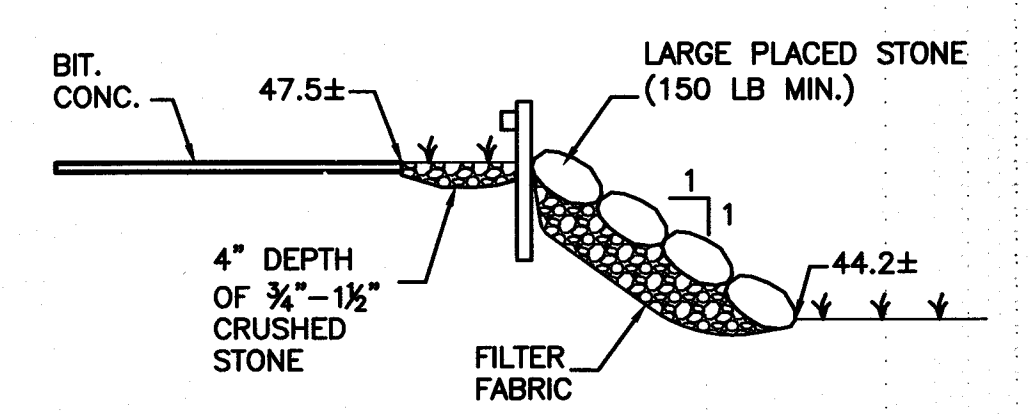
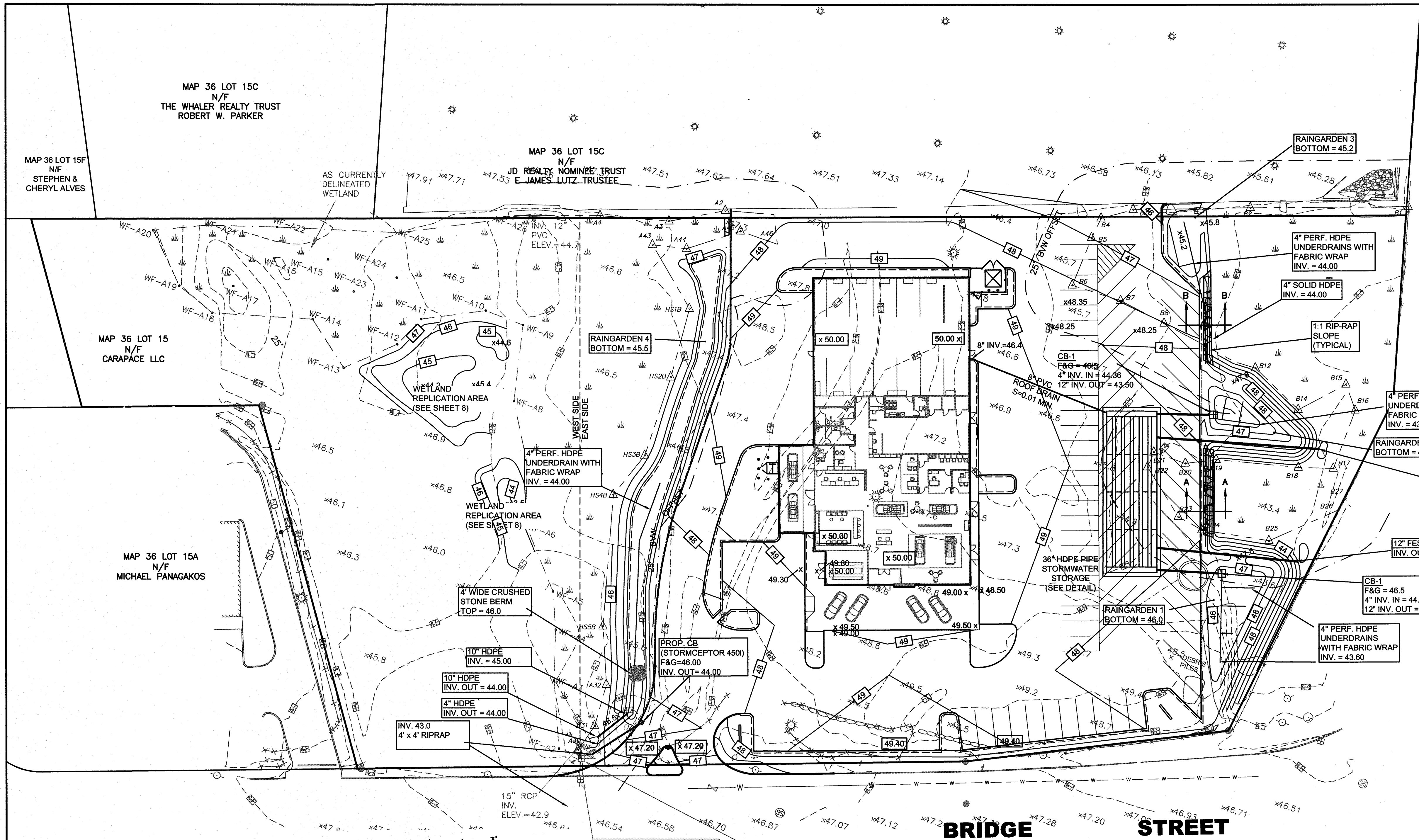
DESIGNED BY: JAG

CHECKED BY: RJR

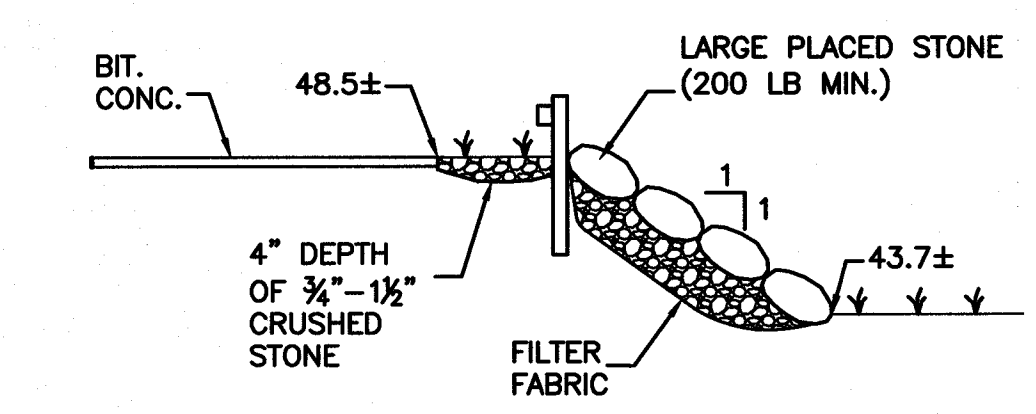
APPROVED BY: RJR

PROJECT NO. 19830101

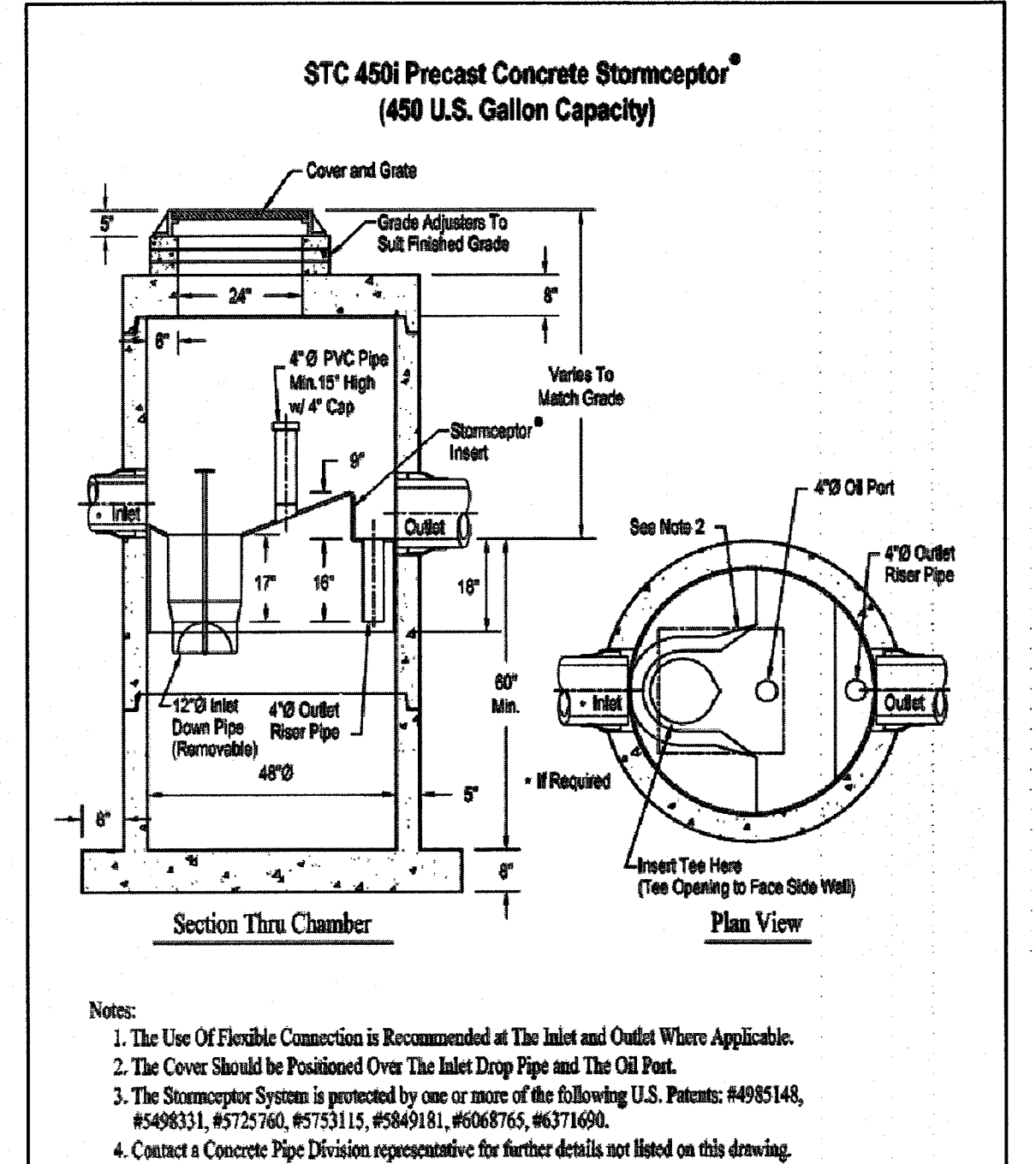
**PRIME ENGINEERING**  
P.O. BOX 1088  
330 BEDFORD ST.  
LAKEVILLE, MA 02347  
TEL: 508.947.0050  
FAX: 508.947.2004



CROSS SECTION B-B



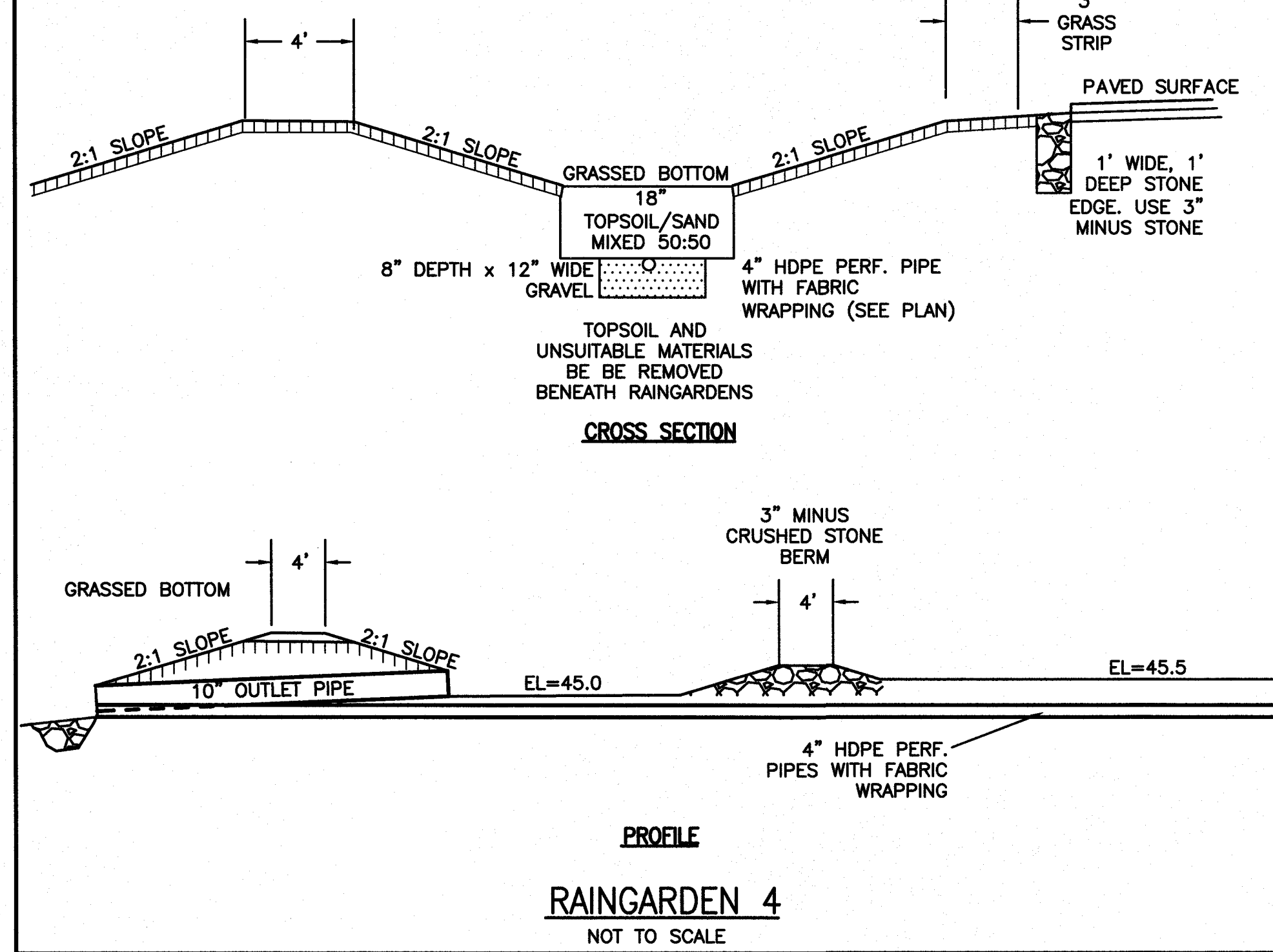
CROSS SECTION A-A



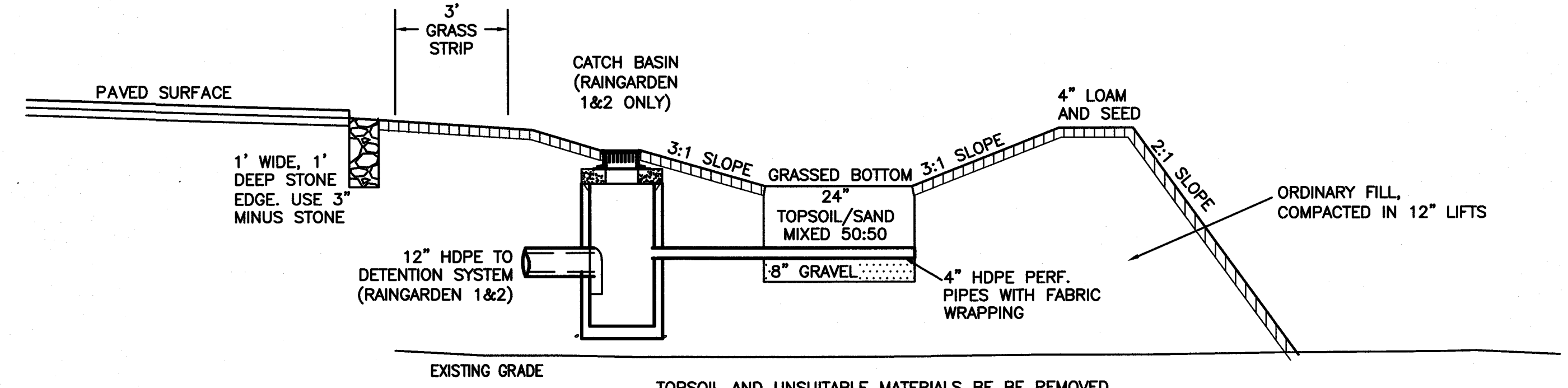
STORMCEPTOR DETAIL  
NOT TO SCALE

ROUTE 240

CATCH BASIN RIM=46.32 INV. 12" RCP (SE)=42.05 INV. 12" RCP (SW)=41.99 INV. 12" RCP (NW)=41.87 INV. 12" RCP (NE)=41.97	CATCH BASIN RIM=45.50 INV. 12" RCP (SE)=42.18 INV. 12" RCP (SW)=41.94 INV. 12" RCP (E)=42.14 INV. 12" RCP (N)=42.55
--	--



PROFILE  
RAINGARDEN 4  
NOT TO SCALE



RAINGARDEN 1 & 2  
NOT TO SCALE

REV.	DATE	DESCRIPTION	BY	APP.
6	7-16-19	NEW BUILDING FOOTPRINT/SITE LAYOUT	JAG	RJR
5	6-24-19	NEW BUILDING FOOTPRINT/SITE LAYOUT	JAG	RJR
4	4-26-19	NEW BUILDING FOOTPRINT/SITE LAYOUT	JAG	RJR
3	9-4-15	GENERAL REVISIONS	TRW	RJR
2	8-25-15	REVISIONS PER PLANNING BOARD	EKW	RJR
1	7-10-15	GENERAL REVISIONS	EKW	RJR

DRAWING TITLE <b>GRADING &amp; DRAINAGE PLAN</b>		SCALE 1" = 30'
PROJECT <b>250 BRIDGE STREET FAIRHAVEN, MASSACHUSETTS</b>		DATE APRIL 27, 2015
CLIENT <b>CARAPACE, LLC FAIRHAVEN, MASSACHUSETTS</b>		DRAWN BY EKW/TRW
DESIGNED BY RJR		CHECKED BY RJR
APPROVED BY RJR		PROJECT NO. 19830101

PRIME ENGINEERING  
P.O. BOX 1088  
350 BEDFORD ST.  
LAKEVILLE, MA 02347  
TEL: 508.947.0050  
FAX: 508.947.2004

**WHALER'S WAY**

EXISTING SMH  
RIM=50.70  
INVERT (8"AC)=45.34  
INVERT IN (4"PVC)=45.57

1-1/4" INV. IN = 45.77

MAP 36 LOT 15C  
N/F  
E WHALER REALTY TRUST  
ROBERT W. PARKER

MAP 36 LOT 15C  
N/F  
JD REALTY NOMINEE TRUST  
E JAMES LUTZ TRUSTEE

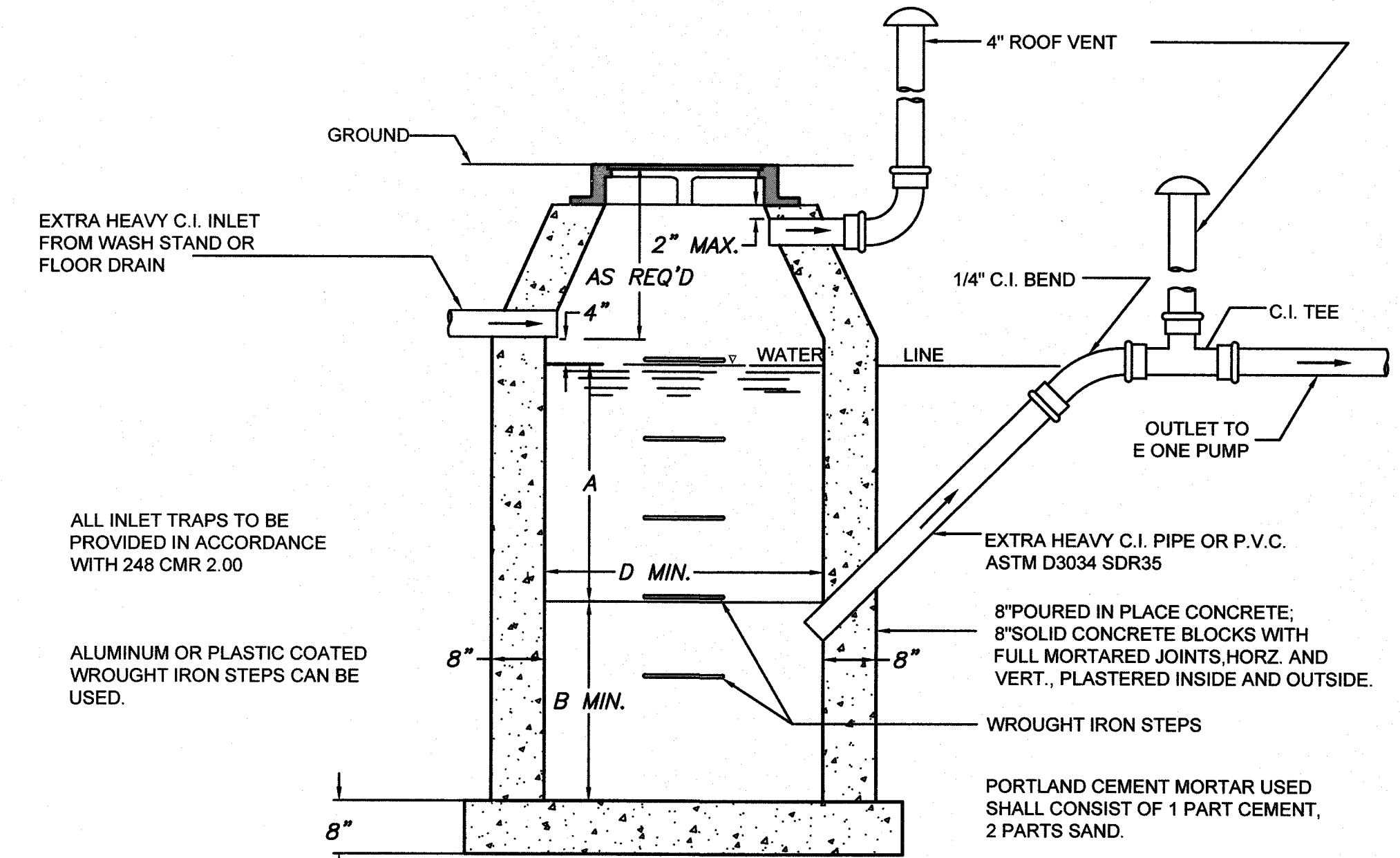
**NOTES**

1. LOCATION AND SIZE OF ALL EXISTING UTILITIES TO BE CONFIRMED BY CONTRACTOR PRIOR TO CONSTRUCTION
2. SEWER, WATER, AND DRAIN MATERIALS AND WORKMANSHIP SHALL CONFORM TO FAIRHAVEN DPW STANDARDS.
3. CONTRACTOR SHALL APPLY FOR AND PAY FOR INSPECTIONAL SERVICES BY FAIRHAVEN DPW FOR ALL SEWER AND WATER WORK.
4. ALL CONSTRUCTION SHALL COMPLY WITH THE TOWN OF FAIRHAVEN DEPARTMENT OF PUBLIC WORKS SPECIFICATIONS, LATEST EDITION.
5. ALL BENDS ON THE WATER MAIN SHALL BE RESTRAINED WITH THRUST BLOCKS AND MEGALUG FITTINGS.
6. ANY PAVEMENT PATCHES IN BRIDGE STREET TO HAVE PAVEMENT 1" THICKER THAN EXISTING.
7. PAVEMENT JOINTS TO BE SEALED WITH STONE DUST AND EMULSION.
8. HIGHWAY SUPERINTENDENT TO INSPECT TRENCHES PRIOR TO FINAL PAVING.
9. A DRIVEWAY PERMIT WILL BE REQUIRED TO CHANGE THE CURB CUT LOCATION IN BRIDGE STREET.
10. A TRENCH PERMIT WILL BE REQUIRED.

**NOTES:**

FOR INLETS LARGER THAN 10" THE DESIGN AND DIMENSIONS WILL BE DETERMINED FOR EACH PARTICULAR CASE. PRE-CAST SEPARATORS ARE TO HAVE ALL SPECIFIED HOLES EITHER CORE-BORED OR CAST IN PLACE.

INLET	D	A	B	INLET	D	A	B
4"	3'-6" Ø	3'-0"	2'-6"	8"	5'-0" Ø	6'-0"	5'-0"
5"	3'-6" Ø	4'-0"	3'-0"	5'-6" Ø	4'-6"	4'-0"	4'-0"
	4'-0" Ø	3'-6"	3'-0"	6'-0" Ø	4'-0"	3'-6"	3'-6"
	4'-0" Ø	3'-0"	2'-6"	6'-0" Ø	3'-0"	3'-0"	3'-0"
	4'-6" Ø	3'-0"	2'-6"	6'-6" Ø	3'-0"	2'-6"	2'-6"
6"	4'-0" Ø	5'-0"	4'-6"	10"	5'-6" Ø	7'-6"	6'-6"
	4'-0" Ø	4'-0"	3'-6"		6'-0" Ø	6'-6"	5'-6"
	4'-6" Ø	3'-6"	3'-0"		6'-0" Ø	6'-6"	5'-6"
	5'-0" Ø	3'-6"	3'-0"		6'-6" Ø	5'-0"	4'-0"
	5'-0" Ø	3'-0"	2'-6"		6'-6" Ø	5'-0"	4'-0"

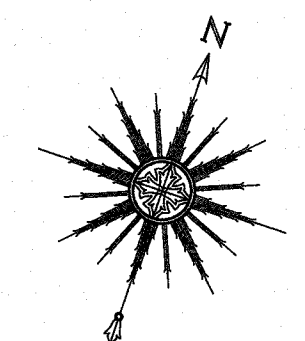


**MDC NOTES:**

1. BASIN TO BE LOCATED OUTSIDE OF BUILDING WHERE POSSIBLE, COVER TO HAVE A CENTER HOLE.
  2. A TIGHT COVER MUST BE USED IF BASIN IS LOCATED INSIDE OF BUILDING.
  3. OPENING SHALL BE NOT LESS THAN 24" DIA.
  4. THE BASIN SHALL BE SO LOCATED AND CONSTRUCTED THAT SURFACE WATER SHALL BE EXCLUDED.
  5. INLET PIPE SHALL BE AT LEAST FOUR INCHES ABOVE NORMAL WATER LINE.
  6. WHERE SUBJECT TO FROST OR CRUSHING CONDITIONS, OUTLET SHALL BE AT LEAST THREE FEET BELOW THE SURFACE.
  7. THE NEW BASIN MUST BE FILLED WITH CLEAN WATER BEFORE USING, AND AFTER BEING EMPTIED FOR PERIODIC CLEANING.
  8. ALL OIL AND GASOLINE MUST BE REMOVED BEFORE CLEANING OUT THE BASIN, AND MUST NOT BE DISCHARGED INTO THE SEWER THROUGH OTHER FIXTURES.
  9. SPECIFICATIONS FOR COVERING SPECIAL CASES OR CONDITIONS, SHALL BE APPROVED BY THE LOCAL AUTHORITIES.
  10. WROUGHT IRON STEPS SHALL BE SPACED ABOUT 18" APART.
  11. BOTH VENTS SHALL BE EXTENDED INDEPENDENTLY 18" ABOVE THE ROOF, OR AS APPROVED BY THE LOCAL AUTHORITIES.
- (Outlet pipe to be at 45 degree angle)

**MDC TRAP DETAIL**  
NOT TO SCALE

**ROUTE 240**



SCALE: 1" = 30'

T 15A  
AGAKOS

UTILITY POLE TO REMAIN

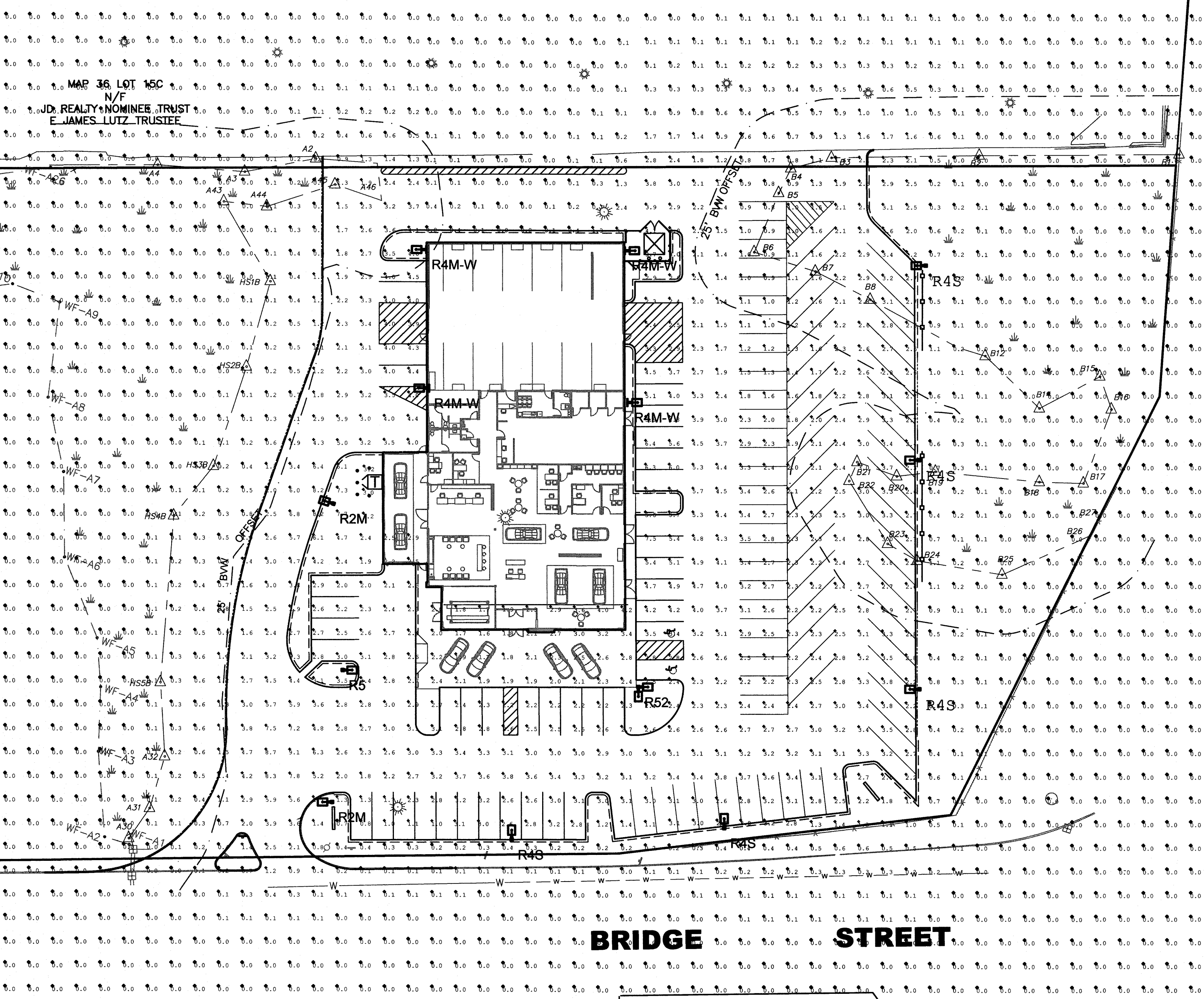
8"X8"X6" TAPPING SLEEVE AND GATE VALVE (SEE NOTE 1)

**BRIDGE STREET**

REV.	DATE	DESCRIPTION	BY	APP.	DRAWING TITLE	SCALE:	DATE:	CHECKED BY:	PROJECT NO.
6	7-16-19	NEW BUILDING FOOTPRINT/SITE LAYOUT	JAG	RJR	<b>SITE UTILITIES PLAN</b> <b>250 BRIDGE STREET</b> <b>FAIRHAVEN, MASSACHUSETTS</b> <b>CARAPACE, LLC</b> <b>FAIRHAVEN, MASSACHUSETTS</b>	1" = 30'	APRIL 27, 2015	RJR	19830101
5	6-24-19	NEW BUILDING FOOTPRINT/SITE LAYOUT	JAG	RJR					
4	4-28-19	NEW BUILDING FOOTPRINT/SITE LAYOUT	JAG	RJR					
3	9-4-15	GENERAL REVISIONS	TRW	RJR					
2	8-25-15	REVISIONS PER PLANNING BOARD	EKW	RJR					
1	7-10-15	GENERAL REVISIONS	EKW	RJR	PROJECT	APRIL 27, 2015	APPROVED BY:		
					CLIENT		RJR		
					DESIGNED BY:		RJR		
					DRAWN BY:		EKW/TRW		
					CHECKED BY:		RJR		
					APPROVED BY:		RJR		

**PRIME ENGINEERING**  
P.O. BOX 1088  
350 BEDFORD ST.  
LAKEVILLE, MA 02347  
TEL: 508.947.0050  
FAX: 508.947.2004

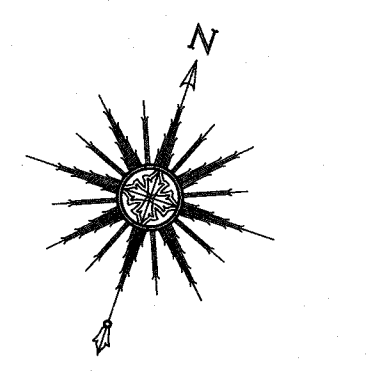
MAP 36 LOT 15C  
N/F  
HALER REALTY TRUST  
BERT W. PARKER



Type	Symbol	Manufacturer / Catalog #	Description	Lamp Description	LLF	# of Type
R4S		U.S. ARCHITECTURAL LIGHTING (1)RZR-IV-80PLED-NW-1050-HS	Pole Mounted, 20' Above Grade. Type IV LED / Reflector Array Module (PLED). Full Cutoff, House-side Shield. Single Luminaire Pole. Orient as Shown in Plan.	80 Luxeon T LED Emitters at 1050mA Neutral White (4000K) 266 Input Watts	0.92	5 Tot.
R5		U.S. ARCHITECTURAL LIGHTING (1)RZR-V-SQ-80PLED-NW-1050	Pole Mounted, 20' Above Grade. Type V SQ LED / Reflector Array Module (PLED). Full Cutoff. Single Luminaire Pole. Orient as Shown in Plan.	80 Luxeon T LED Emitters at 1050mA Neutral White (4000K) 266 Input Watts	0.92	1 Tot.
R52		U.S. ARCHITECTURAL LIGHTING (2)RZR-V-SQ-80PLED-NW-1050	Pole Mounted, 20' Above Grade. Type V SQ LED / Reflector Array Module (PLED). Full Cutoff. Twin luminaires @ 90°. Orient as Shown in Plan.	80 Luxeon T LED Emitters at 1050mA Neutral White (4000K) 266 Input Watts	0.92	1 Tot.
R2M		U.S. ARCHITECTURAL LIGHTING (1)RZR-M-II-48PLED-NW-1050	Pole Mounted, 10' Above Grade. Type II LED / Reflector Array Module (PLED). Full Cutoff. Single Luminaire Pole. Orient as Shown in Plan.	48 Luxeon T LED Emitters at 1050mA Neutral White (4000K) 160 Input Watts	0.92	2 Tot.
R4M-W		U.S. ARCHITECTURAL LIGHTING RZR-M-IV-48PLED-NW-1050-WM	Wall Mounted, 20' Above Grade. Type IV LED / Reflector Array Module (PLED). Full Cutoff. Single Luminaire. Orient as Shown in Plan.	48 Luxeon T LED Emitters at 1050mA Neutral White (4000K) 160 Input Watts	0.92	4 Tot.

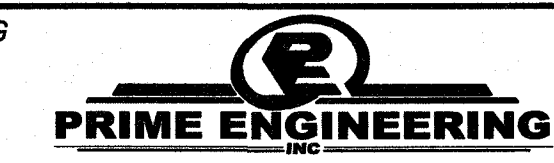
ROUTE 240

BRIDGE STREET

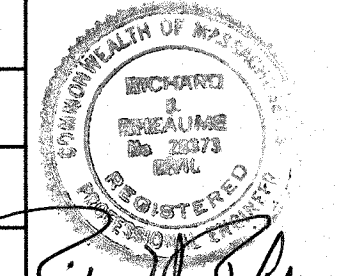


SCALE: 1" = 30'

DRAWING TITLE		<b>LIGHTING PLAN</b>		SCALE		1" = 30'	
PROJECT		<b>250 BRIDGE STREET FAIRHAVEN, MASSACHUSETTS</b>		DATE		APRIL 27, 2015	
CLIENT		<b>CARAPACE, LLC FAIRHAVEN, MASSACHUSETTS</b>		DRAWN BY:		EKW/TRW	
DESIGNED BY:		RJR		CHECKED BY:		RJR	
APPROVED BY:		RJR		PROJECT NO.		19830101	
REV		DATE		DESCRIPTION		BY	
6		7-16-19		NEW BUILDING FOOTPRINT/SITE LAYOUT		JAG RJR	
5		6-24-19		NEW BUILDING FOOTPRINT/SITE LAYOUT		JAG RJR	
4		4-26-19		NEW BUILDING FOOTPRINT/SITE LAYOUT		JAG RJR	
3		9-4-15		GENERAL REVISIONS		TRW RJR	
2		8-25-15		REVISIONS PER PLANNING BOARD		EKW RJR	
1		7-10-15		GENERAL REVISIONS		EKW RJR	



P.O. BOX 1088  
380 BEDFORD ST.  
LAKEVILLE, MA 02347  
TEL: 508.947.0050  
FAX: 508.947.2004



SHEET NO. **6**

## PLANTING SCHEDULE

### TREES

SYMBOL	QTY.	BOTANICAL NAME	COMMON NAME	MIN. SIZE	SPACING
SR	5	SYRINGA RETICULATA 'IVORY SILK'	IVORY SILK JAPANESE TREE LILAC	2"-2.5" CAL	B&B
AG	9	AMELANCHIER X GRANDIFLORA 'AUTUMN BRILLIANCE'	AUTUMN BRILLIANCE SERVICEBERRY	7'-8" HT.	B&B

### SHRUBS

CH	13	CEPHALOTAXUS HARRINGTONIA 'PROSTRATA'	PROSTRATE JAPANESE PLUM YEW	#3 POT PLANT	AS SHOWN
CA	21	CLETHRA ALMIFOLIA 'RUBY SPICE'	RUBY SPICE SUMMERSWEET	18"-24" HEIGHT PLANT	AS SHOWN
IC	24	ILEX CRENATA 'HELLER'	HELLER HOLLY	18"-24" HEIGHT	AS SHOWN
JH	120	JUNIPERUS HORIZONTALIS 'BAR HARBOR'	BAR HARBOR JUNIPER	#3 POT PLANT	AS SHOWN
JP	78	JUNIPERUS PROCUMBENS 'NANA'	DWARF JAPANESE GARDEN JUNIPER	#3 POT PLANT	AS SHOWN
RH	22	RHODODENDRON 'HENRY'S RED'	HENRY'S RED RHODODENDRON	18"-24" HEIGHT	AS SHOWN
RP	29	RHODODENDRON 'PURPLE GEM'	PURPLE GEM RHODODENDRON	#3 POT PLANT	AS SHOWN
RR	9	ROSA RUGOSA 'FRAU DAGMAR HASTROPP'	FRAU DAGMAR HASTROPP ROSE	24"-36"	AS SHOWN
SA	14	SPIRAEA JAPONICA 'ALPINA'	ALPINA SPIREA	#3 POT PLANT	AS SHOWN

### PERENNIALS

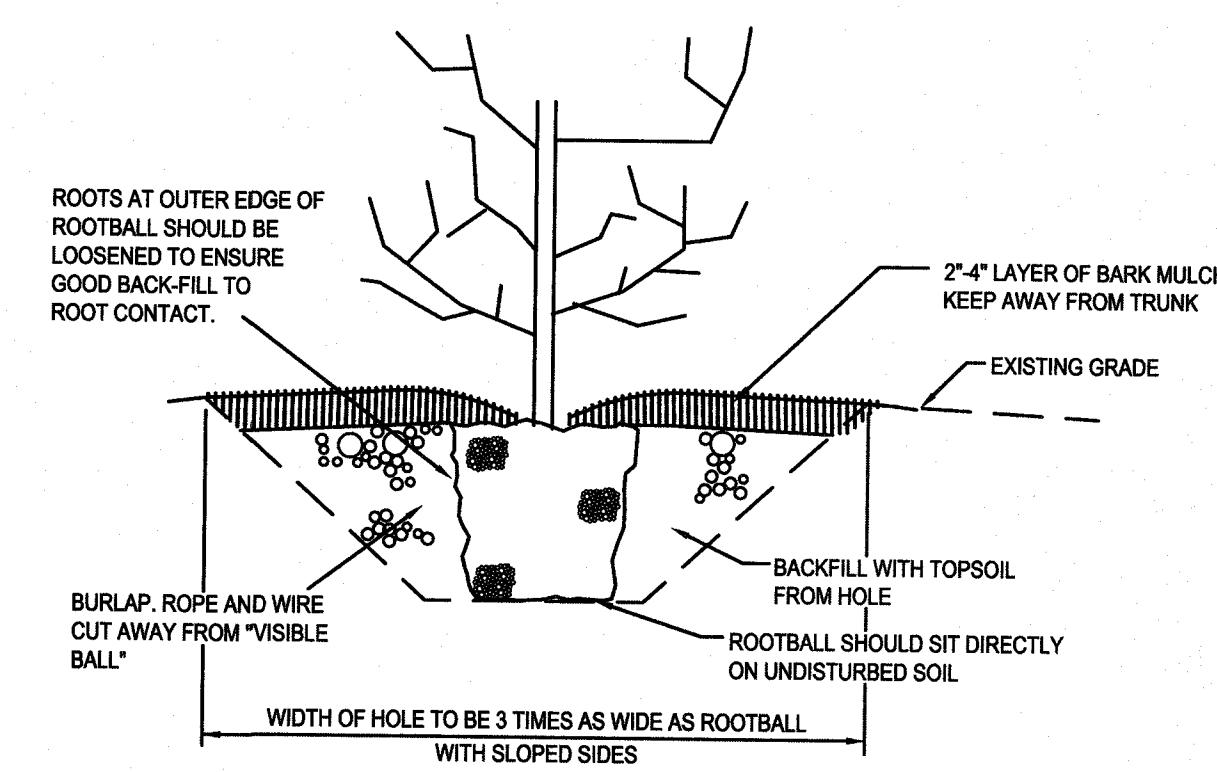
HR	445	HEMEROCALLIS X 'HAPPY RETURNS' HAPPY RETURNS DAYLILY	HAPPY RETURNS DAYLILY	#1 POT PLANT	18" ON CENTER
NF	395	NEPETA X FAASSENII 'BLUE WONDER'	BLUE WONDER CATMINT	#1 POT PLANT	18" ON CENTER
PA	38	PENNISETUM ALOPECUROIDES	HAMELN DWARF FOUNTAIN GRASS	#3 POT	PLANT 2' ON CENTER
RF	465	RUDBECKIA FULGIDA "GOLDSTURM"	GOLDSTURM BLACK-EYED SUSAN	#1 POT PLANT	18" ON CENTER

### RAIN GARDEN PLANTS (WEST OF BUILDING/PARKING)

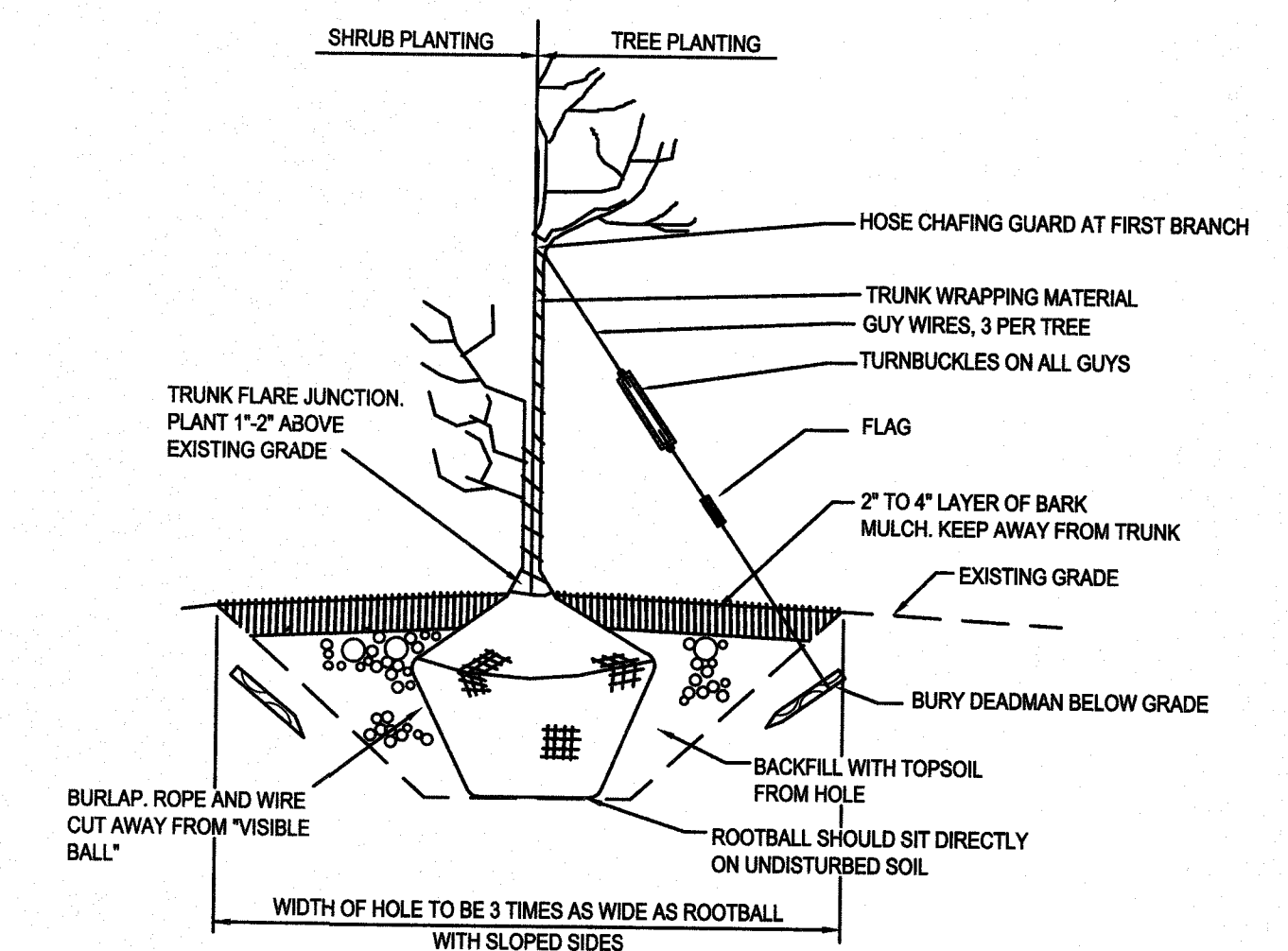
AG	150	ANDROPOGON GERARDII	BIG BLUESTEM	2" PLUG PLANT	2' ON CENTER
AN	100	ASTER NOVAE-ANGLIAE	NEW ENGLAND ASTER	2" PLUG PLANT	2' ON CENTER
EM	50	EUPATORIUM MACULATUM	JOE-PYE WEED	2" PLUG PLANT	3' ON CENTER
EG	100	EUTHAMIA GRAMINIFOLIA	GRASS-LEAVED GOLDENROD	2" PLUG PLANT	2' ON CENTER
IV	50	IRIS VERSICOLOR	BLUE FLAG IRIS	2" PLUG PLANT	18" ON CENTER
JT	150	JUNCUS TENUIS	PATH RUSH	2" PLUG PLANT	18" ON CENTER
ZA	200	ZIZIA AUREA GOLDEN	GOLDEN ALEXANDERS	2" PLUG PLANT	15" ON CENTER

#### NOTES:

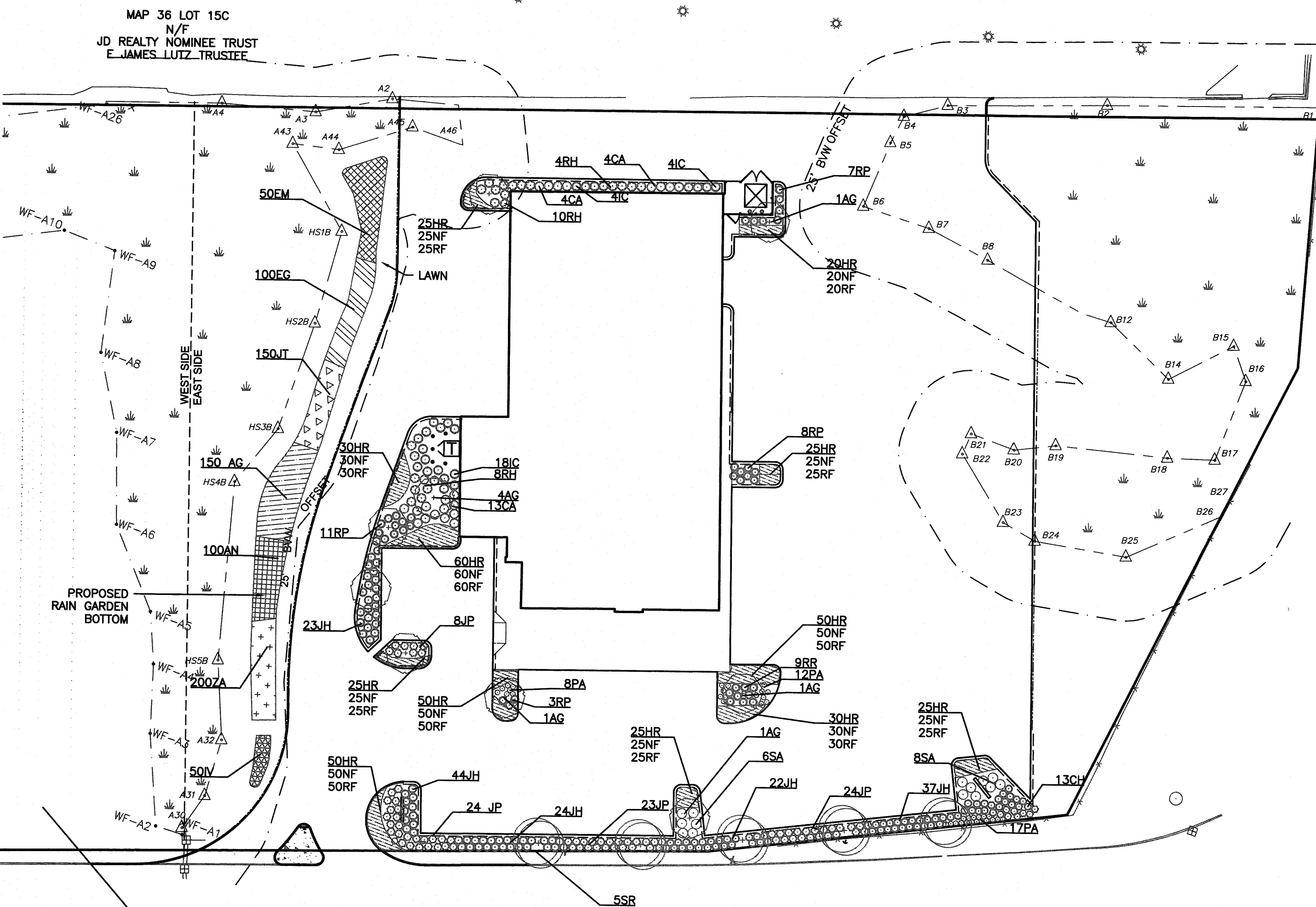
- PLANT SPECIES, CULTIVARS, SIZES, AND LOCATIONS SHALL NOT BE CHANGED EXCEPT BY PERMISSION OF THE LANDSCAPE DESIGNER.
- ALL BARE SOIL AREAS THAT ARE NOT DESIGNATED AS PLANT BEDS SHALL BE SEEDED WITH COMMERCIAL GRADE LAWN MIX EXCEPT FOR MEADOW AREA ON WEST SIDE OF SITE. (SEE NOTE ON PLAN).
- AFTER REMOVING EXISTING VEGETATION FROM AREA WEST OF WETLANDS, SEED WITH ERNST SEEDS MESIC TO DRY POLLINATOR MIX PER MANUFACTURER'S RECOMMENDATIONS.



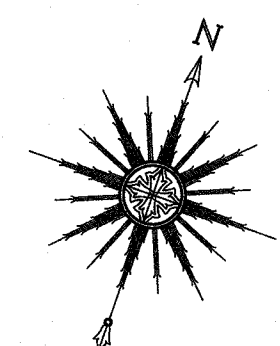
**CONTAINER GROWN SHRUB AND  
TREE PLANTING DETAIL**  
NOT TO SCALE



**B&B TREE AND SHRUB  
PLANTING DETAIL**  
NOT TO SCALE



**BRIDGE STREET**



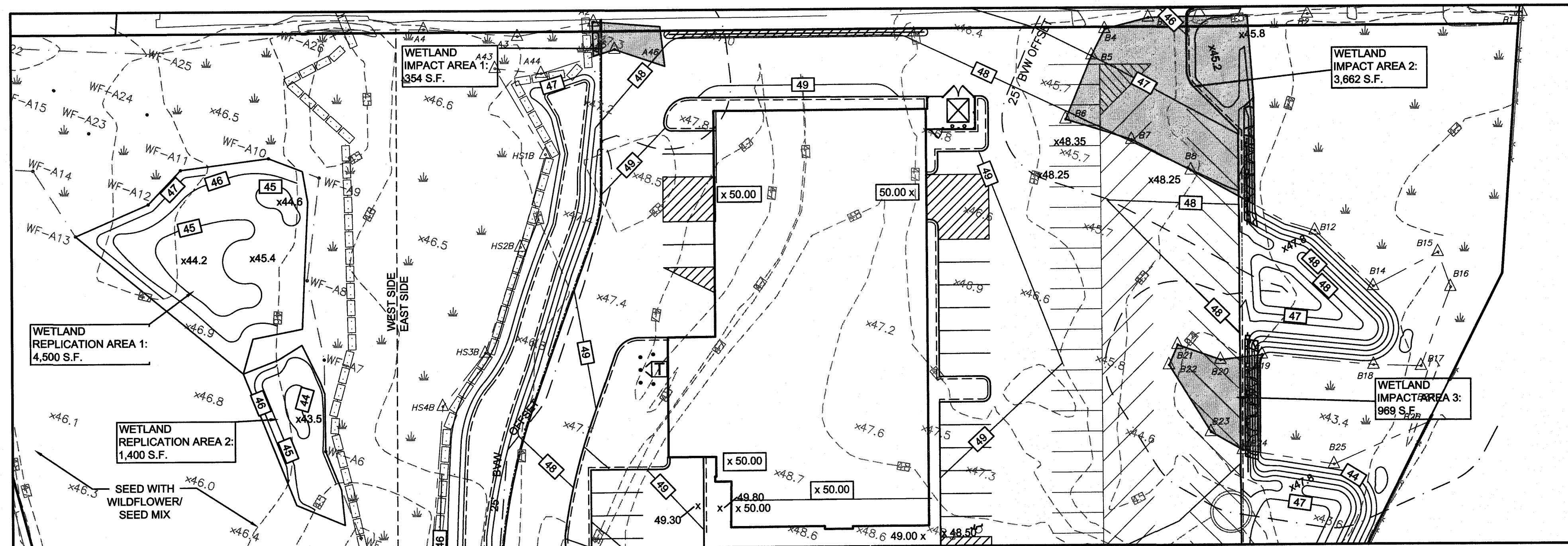
SCALE: 1" = 30'

REV	DATE	DESCRIPTION	BY	APP.	DRAWING TITLE	SCALE	DATE	PROJECT NO.
6	7-16-19	NEW BUILDING FOOTPRINT/SITE LAYOUT	JAG	RJR	<b>LANDSCAPE PLAN</b> <b>250 BRIDGE STREET</b> <b>FAIRHAVEN, MASSACHUSETTS</b> <b>CARAPACE, LLC</b> <b>FAIRHAVEN, MASSACHUSETTS</b>	1" = 30' APRIL 27, 2015	EKW/TRW RJK RJR	7 19830101
5	6-24-19	NEW BUILDING FOOTPRINT/SITE LAYOUT	JAG	RJR				
4	4-28-19	NEW BUILDING FOOTPRINT/SITE LAYOUT	JAG	RJR				
3	9-4-15	GENERAL REVISIONS	TRW	RJR				
2	8-25-15	REVISIONS PER PLANNING BOARD	EKW	RJR				
1	7-10-15	GENERAL REVISIONS	EKW	RJR				
					<b>PRIME ENGINEERING</b> P.O. BOX 1088 350 BEDFORD ST. LAKEVILLE, MA 02347 TEL: 508.947.0050 FAX: 508.947.2004			

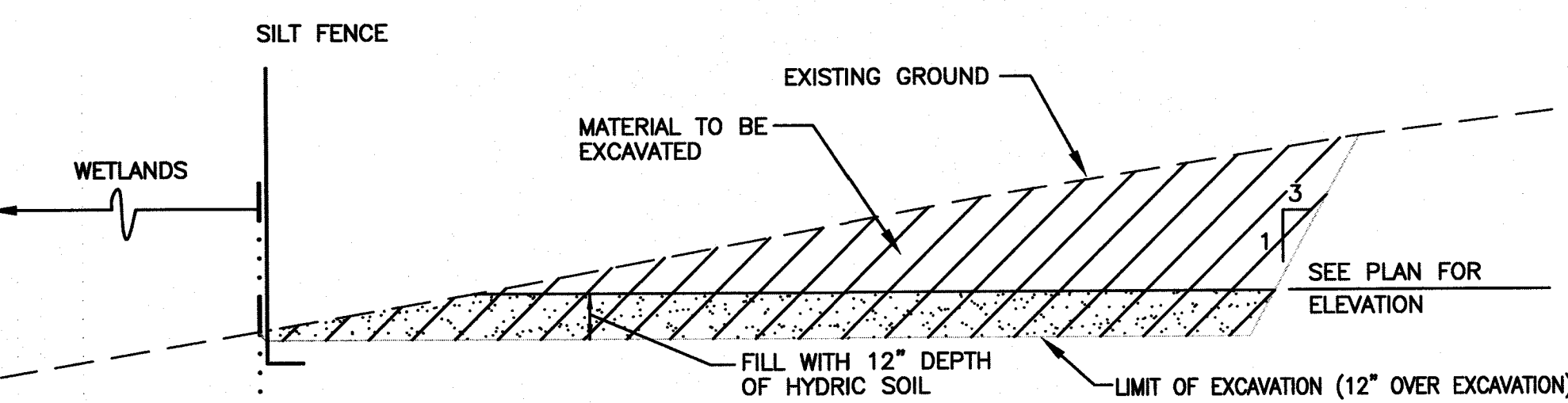
THE BASE OF REPLICATION AREAS ARE TO BE SEEDED WITH ONE POUND PER 2,500 SQUARE FEET OF WETMIX SUPPLIED BY ERNST SEEDS, OR APPROVED EQUAL WHICH CONTAINS THE FOLLOWING SPECIMENS:

**OBL Wetland Mix - ERNMX-131**

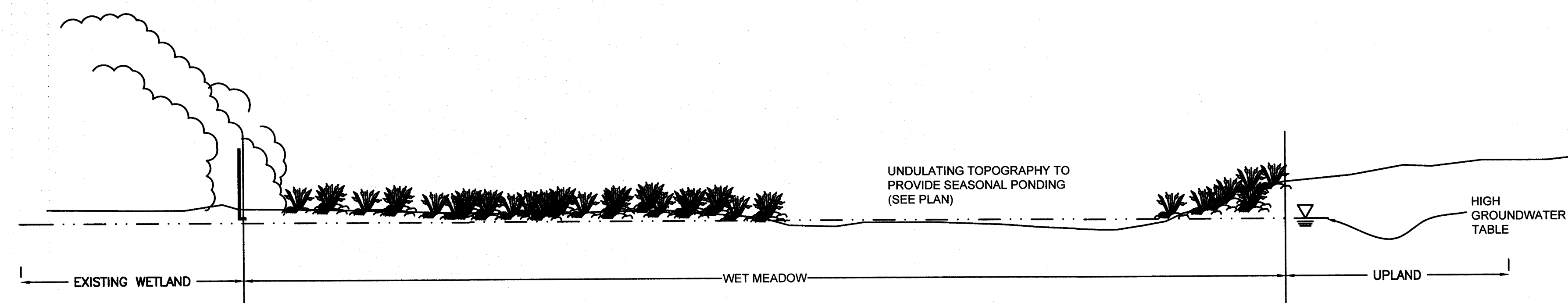
Botanical Name	Common Name
33.00 % <i>Carex vulpinoidea</i> , PA Ecotype	Fox Sedge, PA Ecotype
10.00 % <i>Sparganium eurycarpum</i> , PA Ecotype	Giant Bur Reed, PA Ecotype
8.00 % <i>Carex lupulina</i> , PA Ecotype	Hop Sedge, PA Ecotype
8.00 % <i>Carex lurida</i> , PA Ecotype	Lurid (Shallow) Sedge, PA Ecotype
8.00 % <i>Carex scoparia</i> , PA Ecotype	Blunt Broom Sedge, PA Ecotype
7.00 % <i>Sparganium americanum</i>	Eastern Bur Reed
5.00 % <i>Elymus virginicus</i> , PA Ecotype	Virginia Wildrye, PA Ecotype
4.00 % <i>Verbena hastata</i> , PA Ecotype	Blue Vervain, PA Ecotype
3.00 % <i>Juncus effusus</i>	Soft Rush
2.50 % <i>Asclepias incarnata</i> , PA Ecotype	Swamp Milkweed, PA Ecotype
1.00 % <i>Aster puniceus</i> , PA Ecotype	Purplestem Aster, PA Ecotype
1.00 % <i>Aster umbellatus</i> , PA Ecotype	Flat Topped White Aster, PA Ecotype
1.00 % <i>Cirsium arvense</i> , PA Ecotype	Wood Reedgrass, PA Ecotype
1.00 % <i>Eupatorium perfoliatum</i> , PA Ecotype	Boneset, PA Ecotype
1.00 % <i>Helenium autumnale</i> , PA Ecotype	Common Sneezeweed, PA Ecotype
1.00 % <i>Scirpus atrovirens</i> , PA Ecotype	Green Bulrush, PA Ecotype
0.50 % <i>Alisma subcordatum</i> , PA Ecotype	Mud Plantain (Water Plantain), PA Ecotype
0.50 % <i>Carex crinita</i> , PA Ecotype	Fringed (Nodding) Sedge, PA Ecotype
0.50 % <i>Carex stricta</i> , PA Ecotype	Tussock Sedge, PA Ecotype
0.50 % <i>Iris versicolor</i> , PA Ecotype	Blueflag, PA Ecotype
0.50 % <i>Labellia siphilitica</i> , PA Ecotype	Great Blue Lobelia, PA Ecotype
0.50 % <i>Ludwigia alternifolia</i> , PA Ecotype	Seedbox, PA Ecotype
0.50 % <i>Oenoclea sensibilis</i>	Sensitive Fern
0.50 % <i>Penthorum sedoides</i> , PA Ecotype	Ditch Stonecrop, PA Ecotype
0.50 % <i>Scirpus cyperinus</i> , PA Ecotype	Woolgrass, PA Ecotype
0.50 % <i>Scirpus validus</i> , PA Ecotype	Softstem Bulrush, PA Ecotype
0.30 % <i>Eupatorium fistulosum</i> , PA Ecotype	Joe Pye Weed, PA Ecotype
0.10 % <i>Chelone glabra</i> , PA Ecotype	Turtlehead, PA Ecotype
0.10 % <i>Mimulus ringens</i> , PA Ecotype	Square Stemmed Monkeyflower, PA Ecotype



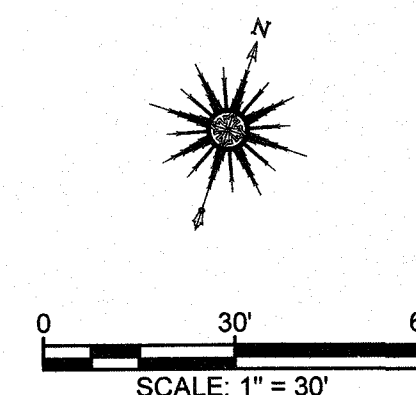
**WETLAND REPLICATION PLAN**  
SCALE: 1" = 30'



**SCHEMATIC CROSS SECTION OF REPLICATION AREA EARTHWORK**  
NOT TO SCALE



**SCHEMATIC CROSS SECTION OF REPLICATION AREA VEGETATION**  
NOT TO SCALE



**NOTES:**

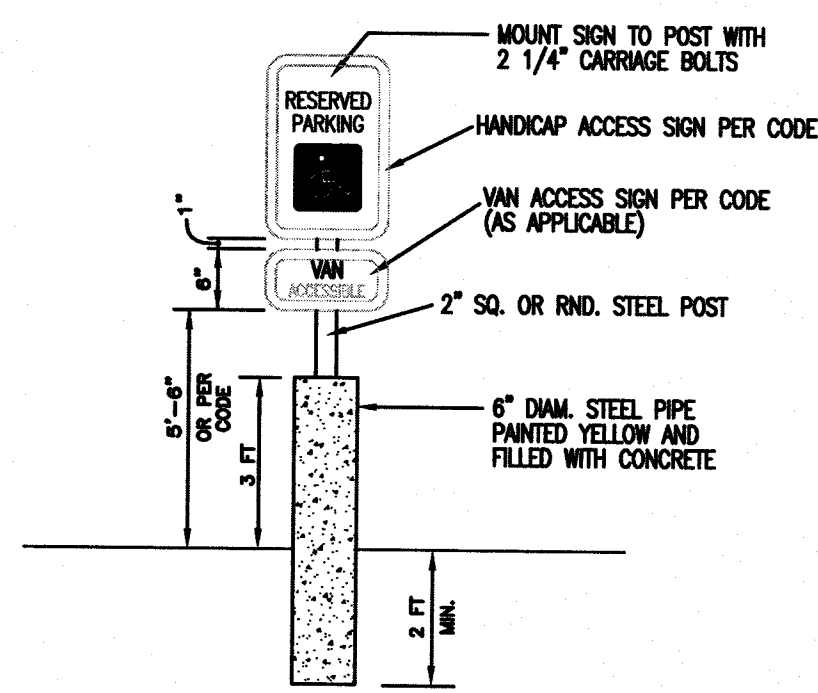
1. THE EXISTING WETLANDS WITHIN THE IMPACT AREAS CONSIST OF WET MEADOW VEGETATION SUCH AS VARIOUS GRASSES, SEDGES, AND HERBACEOUS PLANTS.
2. IT IS INTENDED THE WETLAND REPLICATION AREA BE PLANTED WITH A WETLAND SEED MIX WITH A VARIETY OF GRASSES AND HERBACEOUS PLANTS AND WILL DEVELOP INTO A WET MEADOW.

**SEQUENCE OF CONSTRUCTION FOR WETLANDS REPLICATION AREA**

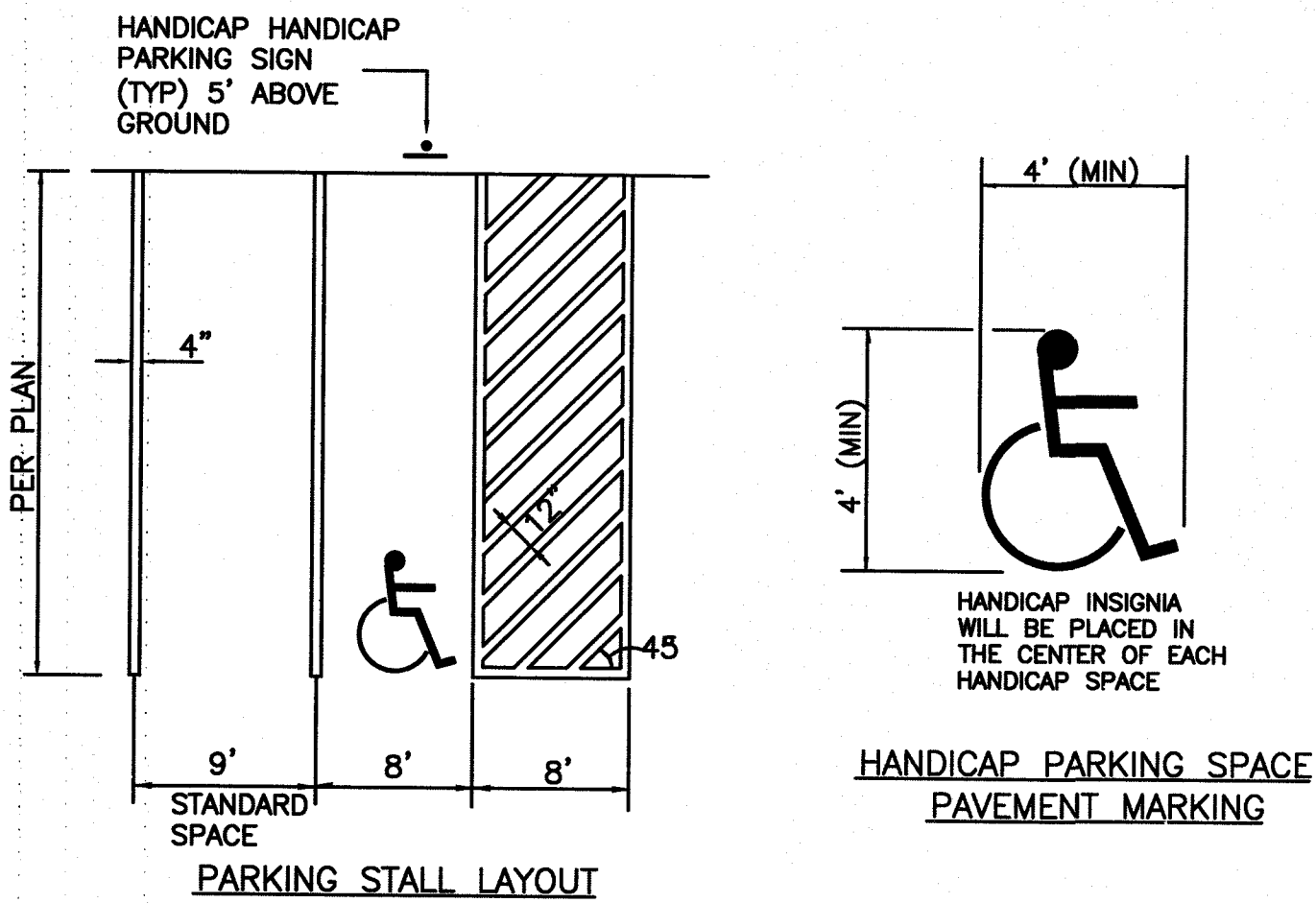
1. THE MUTIFLORA ROSE SHALL BE REMOVED FROM UPLAND AREAS.
2. THE REPLICATION AREA SHALL BE STAKED BY A SURVEY CREW.
3. THE SILT FENCE SHALL BE PLACED AND TOED IN AT THE DOWNGRADIENT LIMIT OF THE REPLICATION AREA AND IN THE WETLAND IMPACT AREA AS SHOWN ON THIS PLAN.
4. THE LOCAL CONSERVATION COMMISSION AGENT'S APPROVAL OF THE SILT FENCE INSTALLATION SHALL BE SOUGHT PRIOR TO PROCEEDING.
5. THE REPLICATION AREA SHALL BE PREPARED TO SUBGRADE.
6. ORGANIC MATERIAL FROM THE IMPACT AREA SHALL BE PLACED ON THE BASE OF THE OVER EXCAVATED REPLICATION AREA. STOCKPILED SOILS SHALL BE COVERED OR KEPT MOIST. SHOULD ADDITIONAL SOILS BE NEEDED, IMPORTED SOILS ARE TO BE FREE OF INVASIVE SPECIES AND HAVE A HIGH ORGANIC CONTENT. THIS MAY BE ACCOMPLISHED BY MIXING 1/3 COMPOST WITH 2/3 TOPSOIL. THE SURFACE OF THIS SOIL SHALL BE GENTLY DISTURBED WITH THE FORKS OF AN EXCAVATOR IN A NORTH-SOUTH DIRECTION TO CREATE A MICROTOPOGRAPHY. THE AREA SHALL NOT BE ROLLED SMOOTHED OR COMPACTED.
7. THE LOCAL CONSERVATION COMMISSION AGENT SHALL BE NOTIFIED PRIOR TO THE START OF PLANTING IN THE REPLICATION AREA.
8. THE BASE AREA SHALL BE SEEDED WITH ERNST WETLANDS SEED MIX.

REV.	DATE	DESCRIPTION	BY	APP.	DRAWING TITLE	SCALE:
					<b>WETLAND REPLICATION PLAN</b>	1" = 30'
					<b>PROJECT</b>	DATE: APRIL 27, 2015
					<b>250 BRIDGE STREET</b>	DRAWN BY: EKW/TRW
					<b>FAIRHAVEN, MASSACHUSETTS</b>	DESIGNED BY: RJR
					<b>CLIENT</b>	CHECKED BY: RJR
					<b>CARAPACE, LLC</b>	APPROVED BY: RJR
					<b>FAIRHAVEN, MASSACHUSETTS</b>	SHEET NO. 8
					<b>CIVIL ENGINEERING</b>	PROJECT NO. 19830101
					<b>LAND SURVEYING</b>	
					<b>ENVIRONMENTAL ASSESSMENT</b>	
					<b>PRIME ENGINEERING</b>	
					P.O. BOX 1088	
					300 BEDFORD ST.	
					LAKEVILLE, MA 02347	
					TEL: 508.947.0050	
					FAX: 508.947.2004	



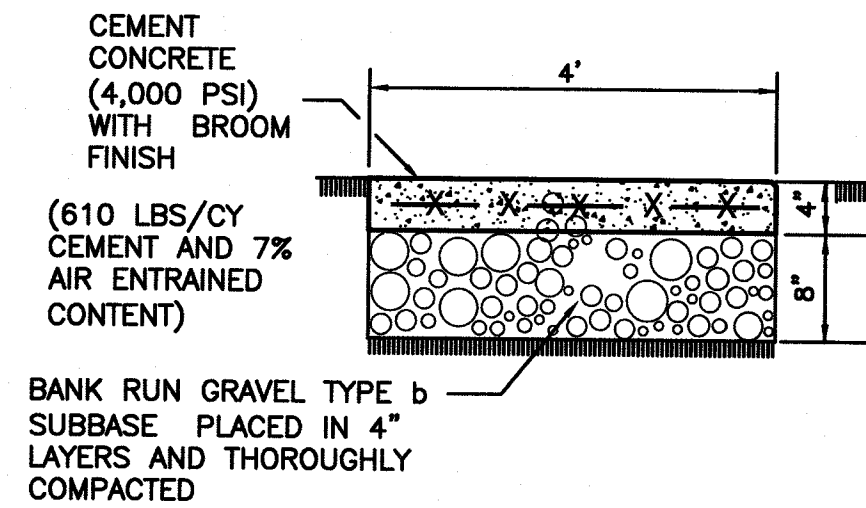


**HANDICAP SIGN DETAIL**  
NOT TO SCALE

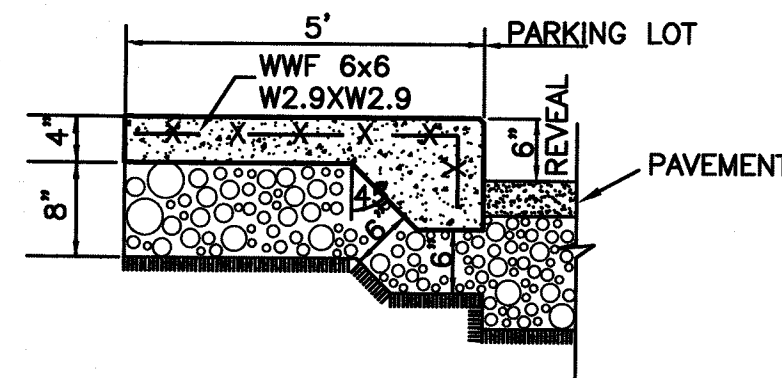


**TYPICAL PAVEMENT MARKINGS**  
NOT TO SCALE

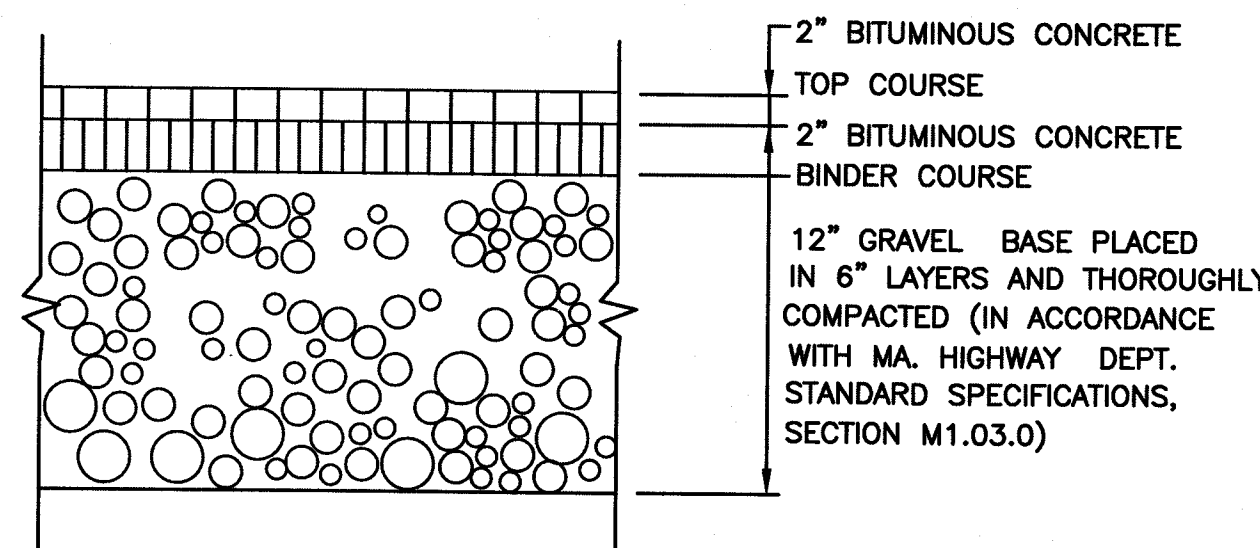
NOTE: ALL PAVEMENT MARKING WILL BE WHITE REFLECTORIZED TRAFFIC PAINT. WIDTH AS NOTED.



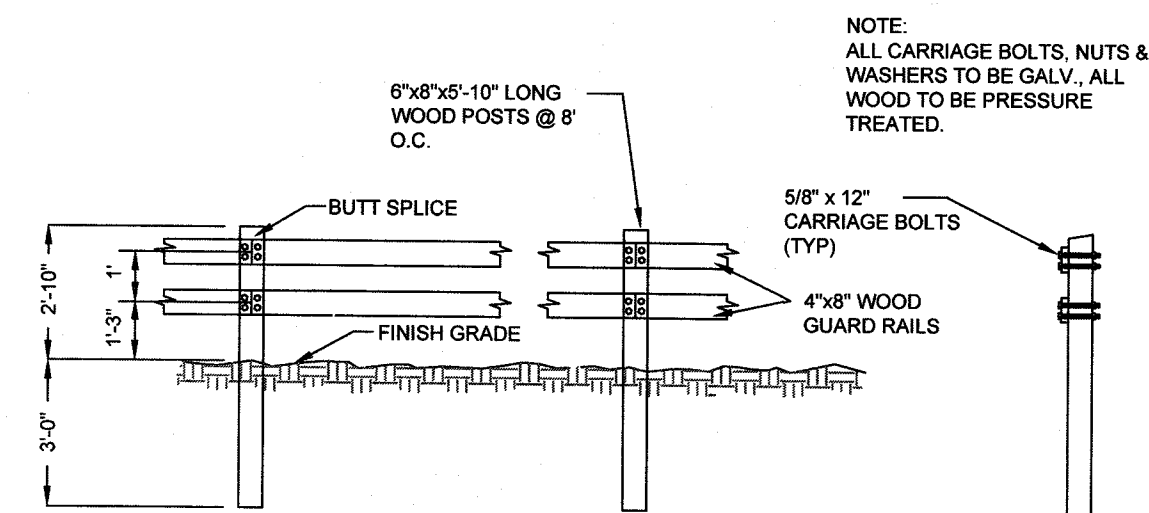
**CONCRETE SIDEWALK**  
(TO BE USED WHEN SIDEWALK DOES NOT ADJOIN PARKING SPACES)  
NOT TO SCALE



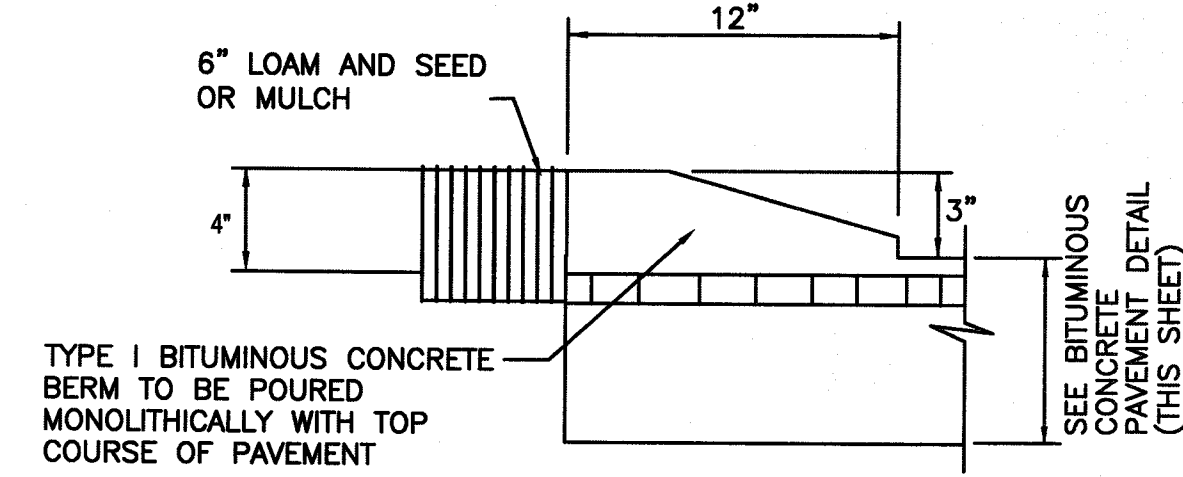
**CONCRETE WALK**  
(WITH THICKENED EDGE AT PAVEMENT)  
NOT TO SCALE



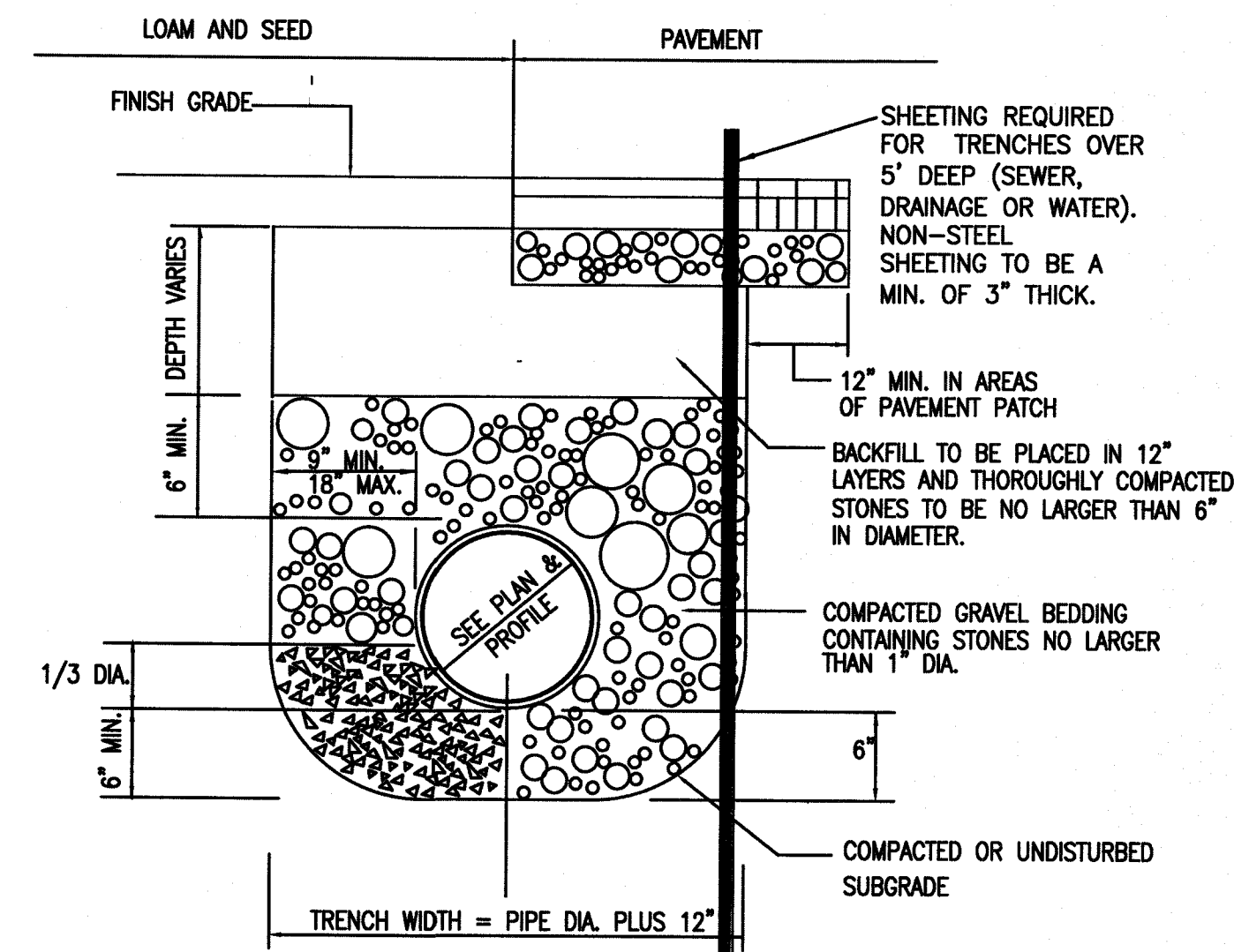
**STANDARD DUTY BITUMINOUS CONCRETE PAVEMENT**  
NOT TO SCALE



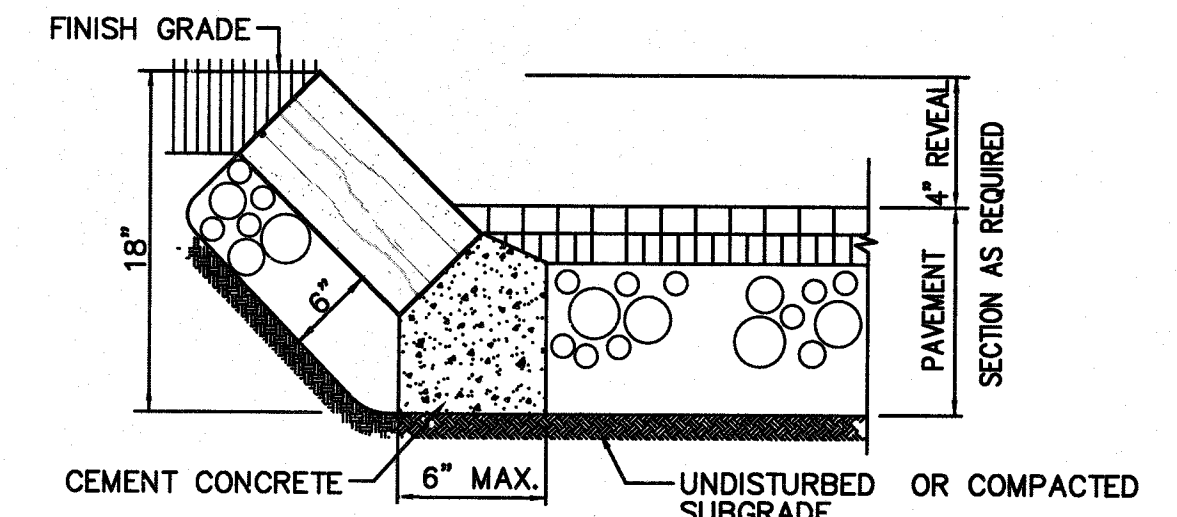
**TYPICAL WOOD GUARD RAIL DETAILS**  
NOT TO SCALE



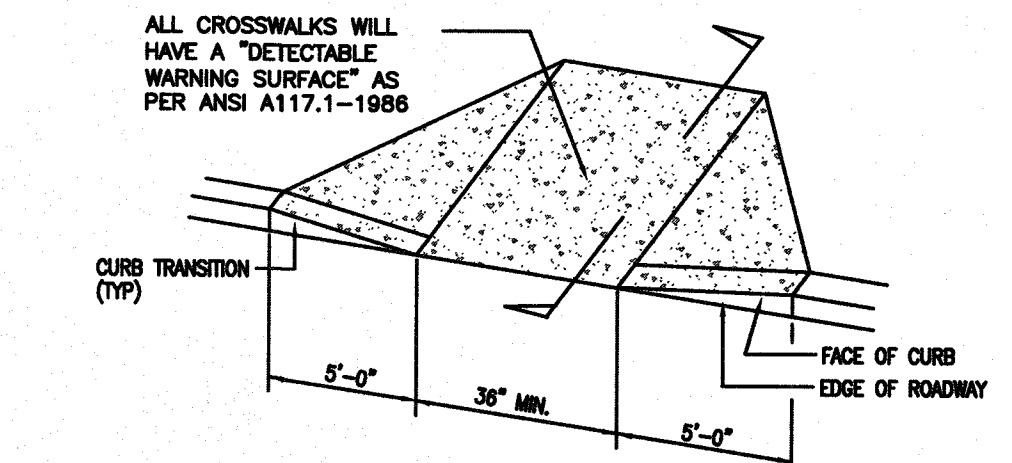
**CAPE COD BERM DETAIL**  
NOT TO SCALE



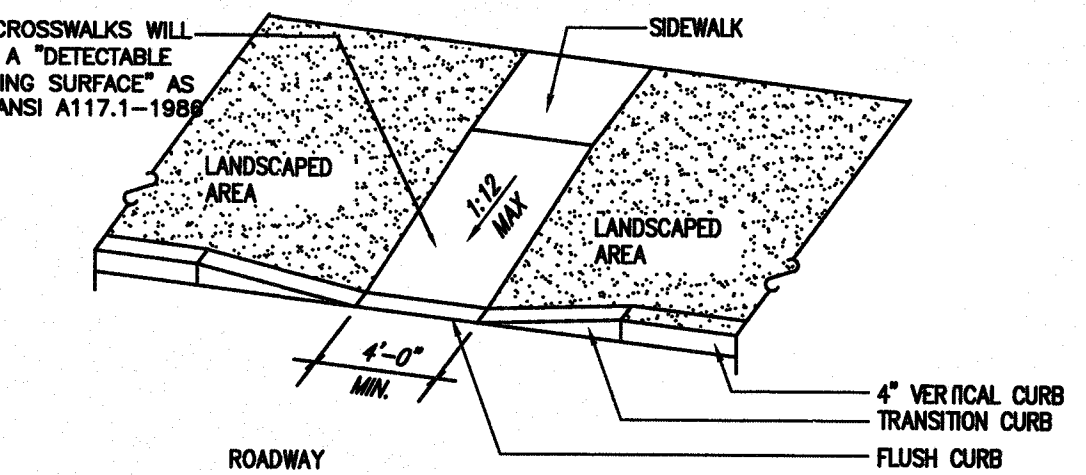
**PIPE TRENCH DETAIL**  
NOT TO SCALE



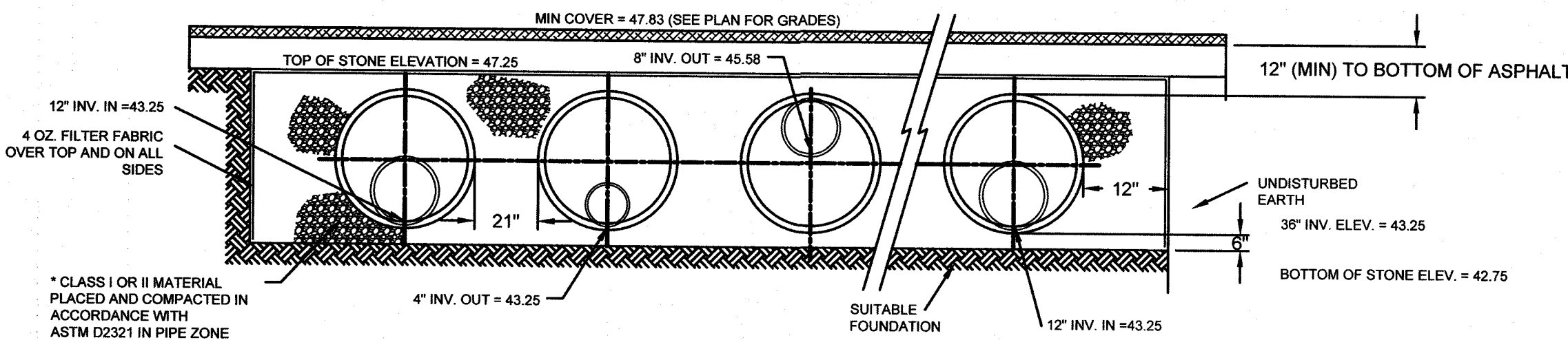
**SLOPED GRANITE CURB**  
NOT TO SCALE



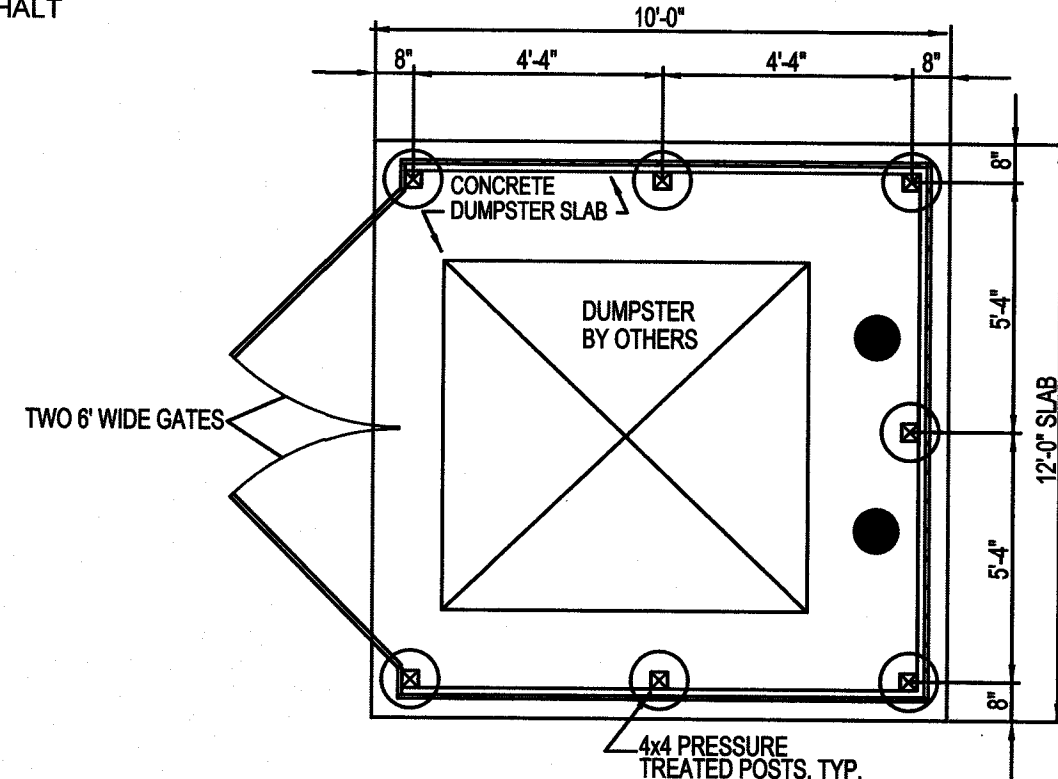
**HANDICAP RAMP TYPE A**  
NOT TO SCALE



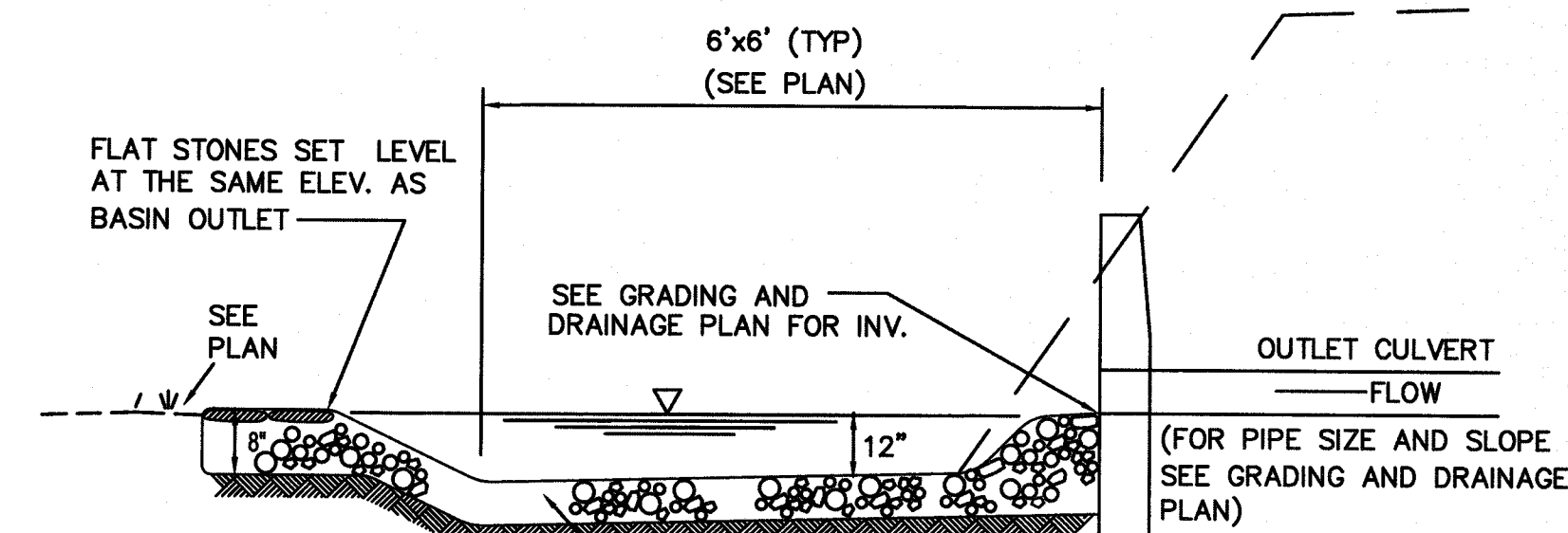
**HANDICAP RAMP TYPE B**  
NOT TO SCALE



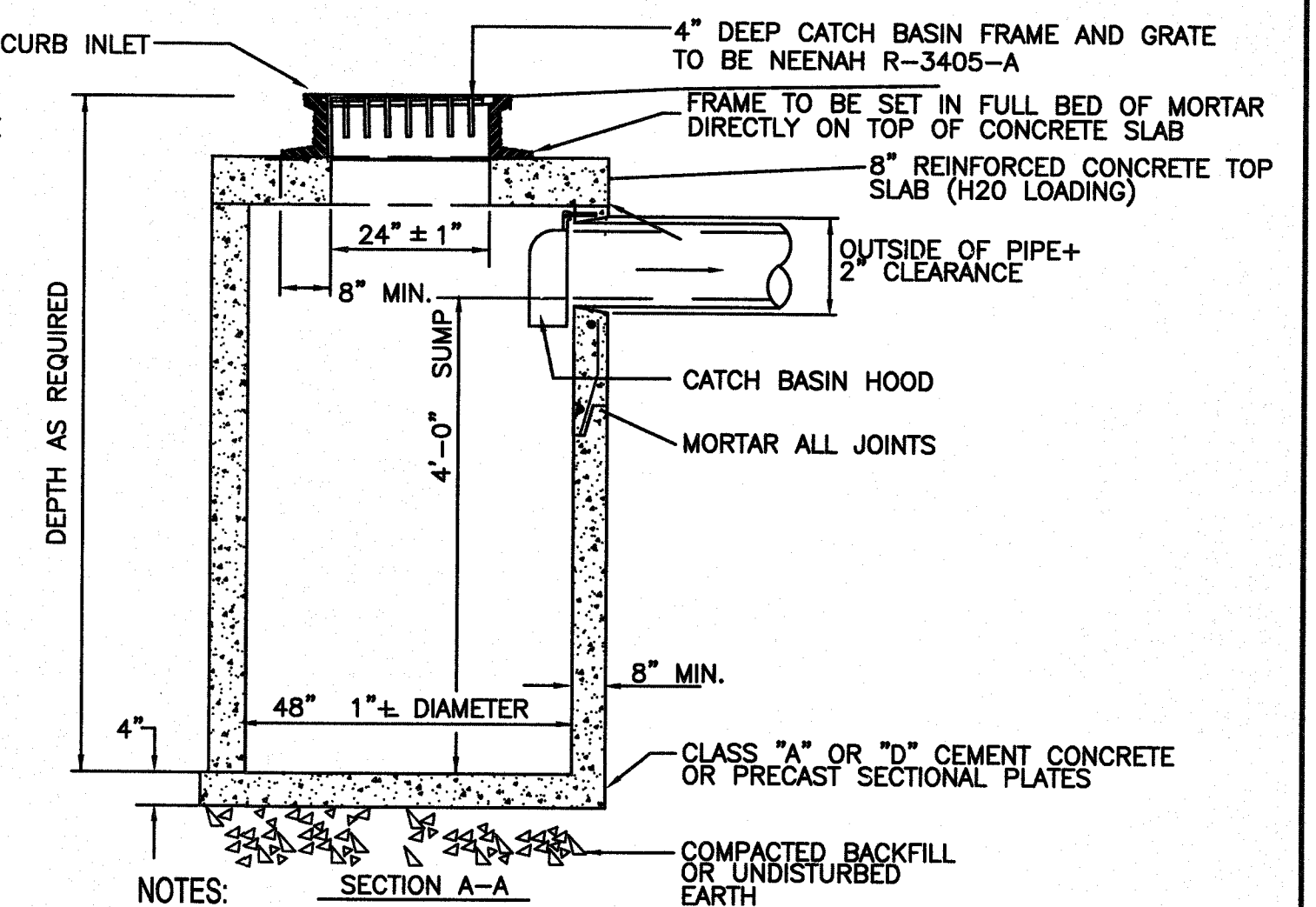
**UNDERGROUND DETENTION SYSTEM**  
NOT TO SCALE



**DUMPSTER ENCLOSURE**  
NOT TO SCALE



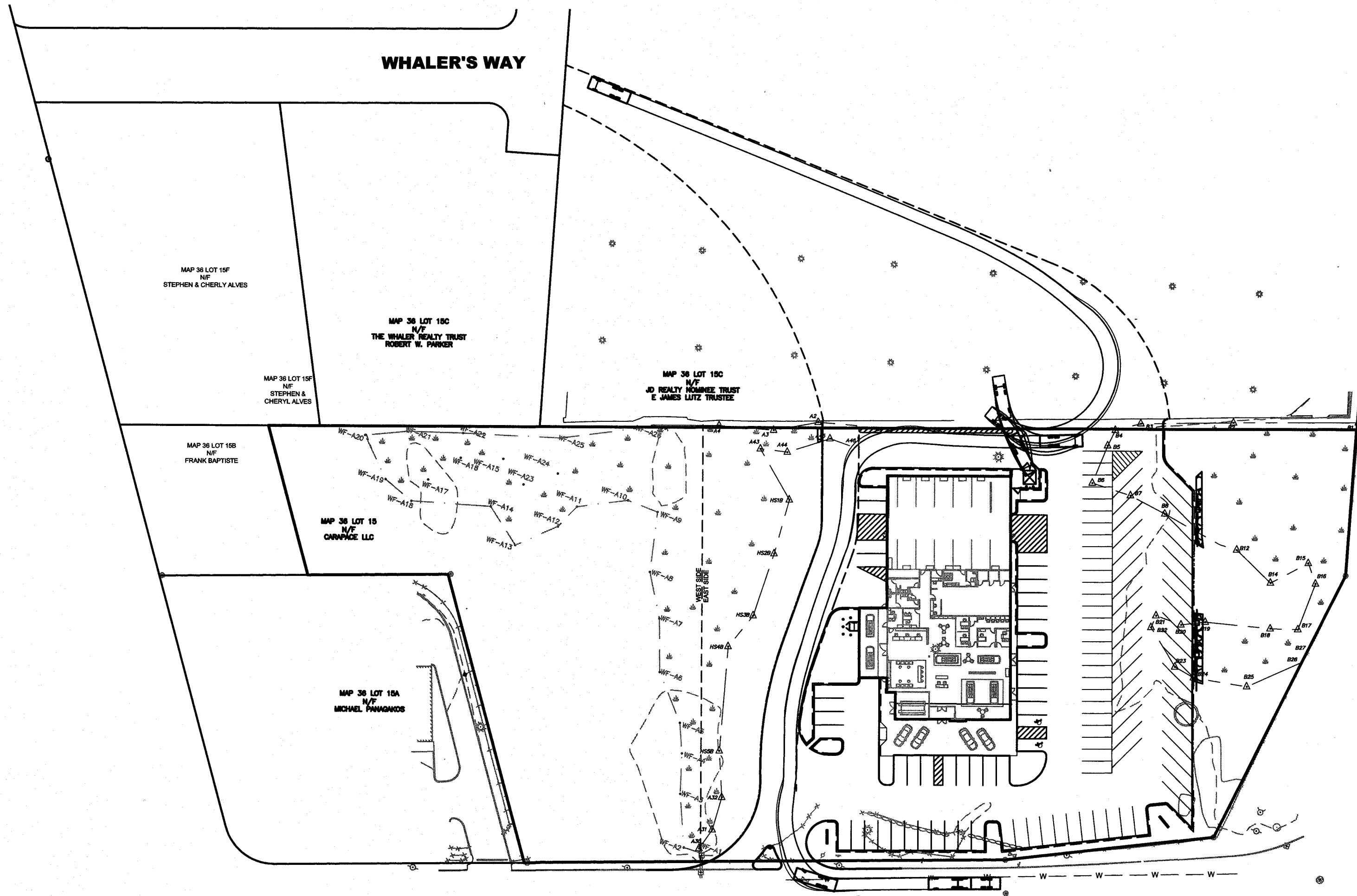
**SPLASH POOL**  
NOT TO SCALE



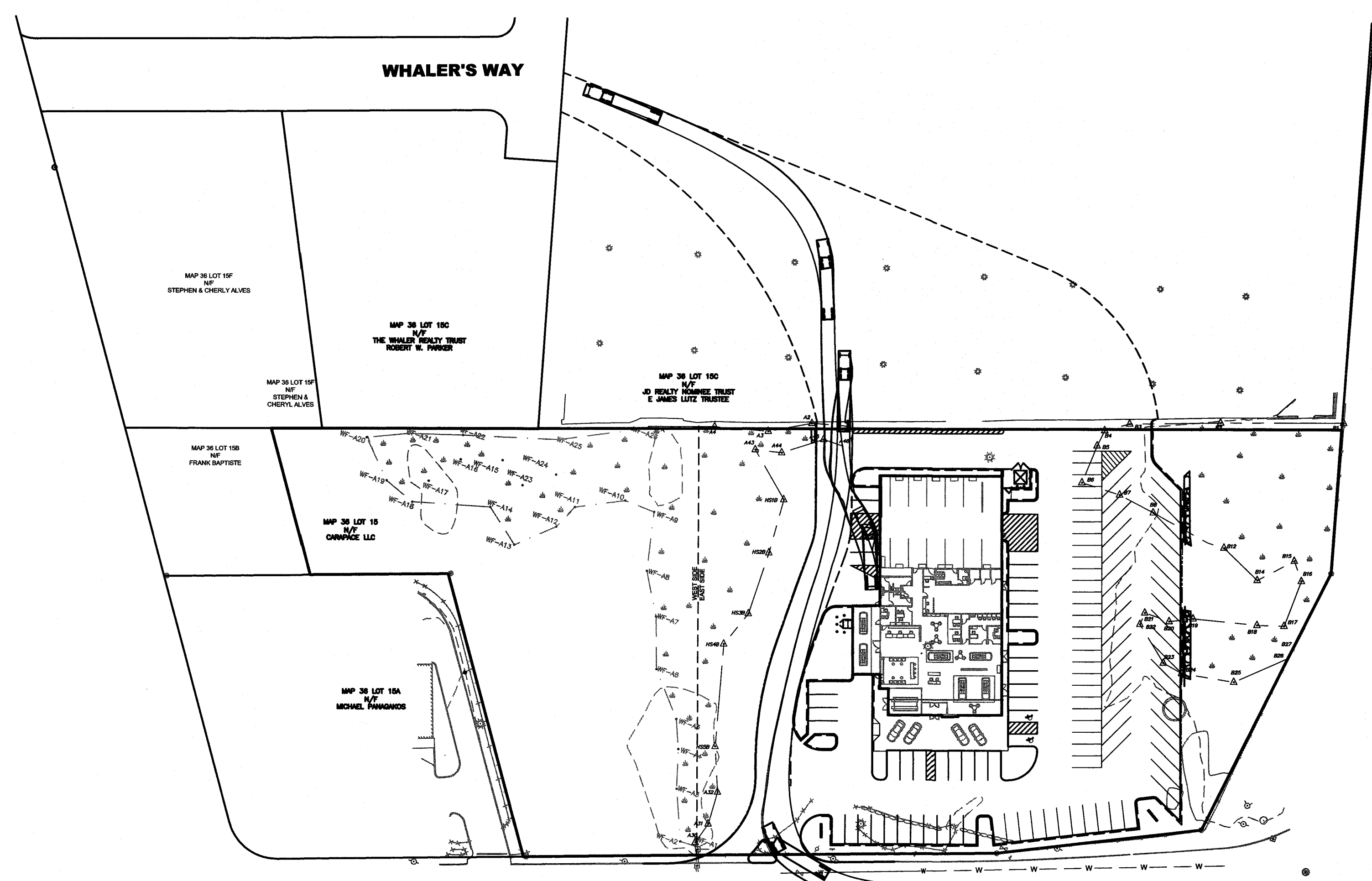
**TYPICAL FLAT TOP CATCH BASIN**  
NOT TO SCALE

1. CATCH BASIN HOOD SHALL BE INSTALLED ON OUTLET PIPE.

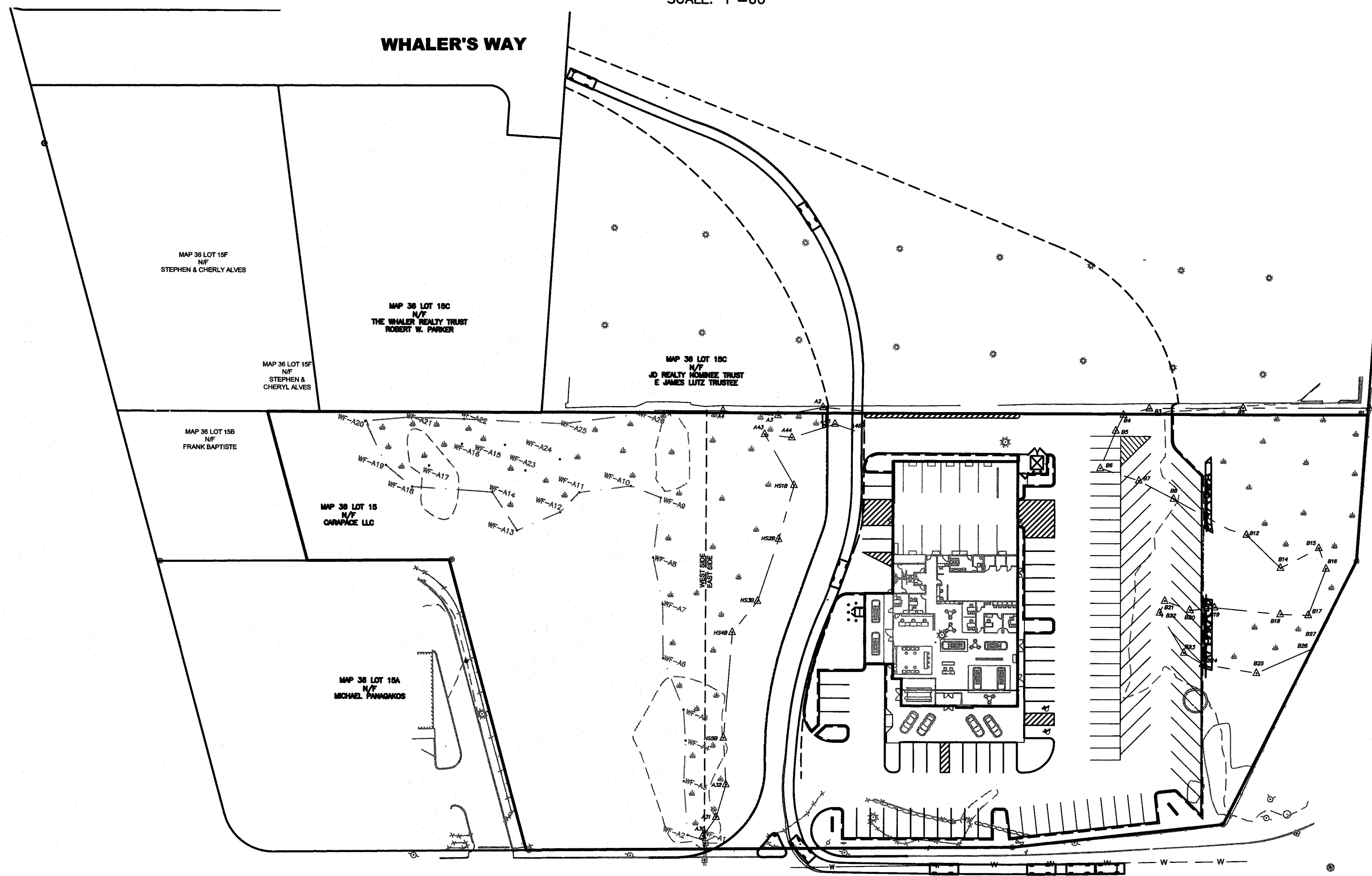
REV	DATE	DESCRIPTION	BY	APP.	DRAWING TITLE	SCALE
8	7-16-19	NEW BUILDING FOOTPRINT/SITE LAYOUT	JAG	RJR	<b>DETAILS</b> <b>250 BRIDGE STREET</b> <b>FAIRHAVEN, MASSACHUSETTS</b>	N.T.S.
5	8-24-19	NEW BUILDING FOOTPRINT/SITE LAYOUT	JAG	RJR		
4	4-26-19	NEW BUILDING FOOTPRINT/SITE LAYOUT	JAG	RJR		
3	9-4-15	GENERAL REVISIONS	TRW	RJR		
2	8-25-15	REVISIONS PER PLANNING BOARD	EKW	RJR	<b>CARAPACE, LLC</b> <b>FAIRHAVEN, MASSACHUSETTS</b>	P.O. BOX 1088 380 BEDFORD ST. LAKEVILLE, MA 02347 TEL: 508.947.0050 FAX: 508.947.2004
1	7-10-15	GENERAL REVISIONS	EKW	RJR		
					<b>PRIME ENGINEERING</b>	CHECKED BY: RJR
						APPROVED BY: RJR
						PROJECT NO. 19890101



**TRASH TRUCK**  
SCALE: 1"=60'



**WB-50 TRUCK (I.E. VEHICLE DELIVERY TRUCK)**  
SCALE: 1"=60'

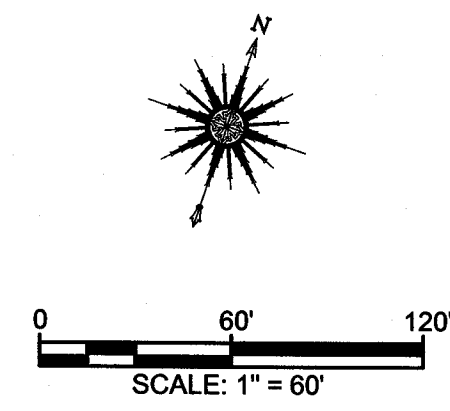


**PASSENGER CAR**  
SCALE: 1"=60'

ROUTE 240

ROUTE 240

ROUTE 240



**NOTES:**

1. THE INTENT OF THIS PLAN IS TO DEMONSTRATE HOW A DELIVERY TRUCK, A TRASH TRUCK, AND A PASSENGER CAR CAN MANEUVER THROUGHOUT THE SITE.
2. THE ROUTES SHOWN ARE NOT THE ONLY ROUTES THESE VEHICLES MAY TAKE. THE ROUTING SHOWN IS PREDICTED TO BE THE MOST CONVENIENT.

REV	DATE	DESCRIPTION	BY	APP.	DRAWING TITLE	SCALE:	
6	7-16-19	NEW BUILDING FOOTPRINT/SITE LAYOUT	JAG	RJR	<b>VEHICLE MOVEMENT PLAN</b>  <b>250 BRIDGE STREET</b> <b>FAIRHAVEN, MASSACHUSETTS</b>  <b>CARAPACE, LLC</b> <b>FAIRHAVEN, MASSACHUSETTS</b>	1"=60'	
5	6-24-19	NEW BUILDING FOOTPRINT/SITE LAYOUT	JAG	RJR		DATE	APRIL 27, 2015
4	4-26-19	NEW BUILDING FOOTPRINT/SITE LAYOUT	JAG	RJR		DRAWN BY:	EKW/TRW
3	9-4-15	GENERAL REVISIONS	TRW	RJR		DESIGNED BY:	RJR
2	8-25-15	REVISIONS PER PLANNING BOARD	EKW	RJR		CHECKED BY:	RJR
1	7-10-15	GENERAL REVISIONS	EKW	RJR		APPROVED BY:	RJR
					PROJECT <b>250 BRIDGE STREET</b> <b>FAIRHAVEN, MASSACHUSETTS</b>  <b>CARAPACE, LLC</b> <b>FAIRHAVEN, MASSACHUSETTS</b>	CLIENT <b>CARAPACE, LLC</b> <b>FAIRHAVEN, MASSACHUSETTS</b>	SHEET NO. <b>10</b>
					<b>PRIME ENGINEERING</b> P.O. BOX 1088 330 BEDFORD ST. LAKEVILLE, MA 02347 TEL: 508.947.0050 FAX: 508.947.2004	PROJECT NO. <b>19830101</b>	