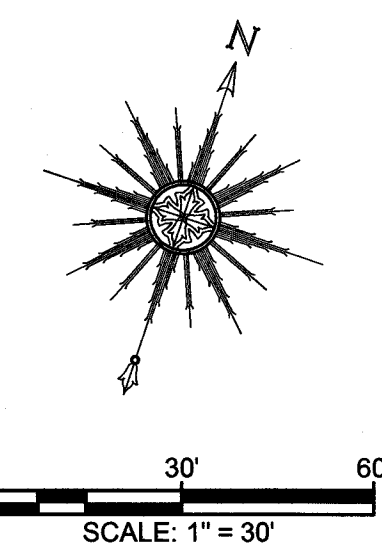
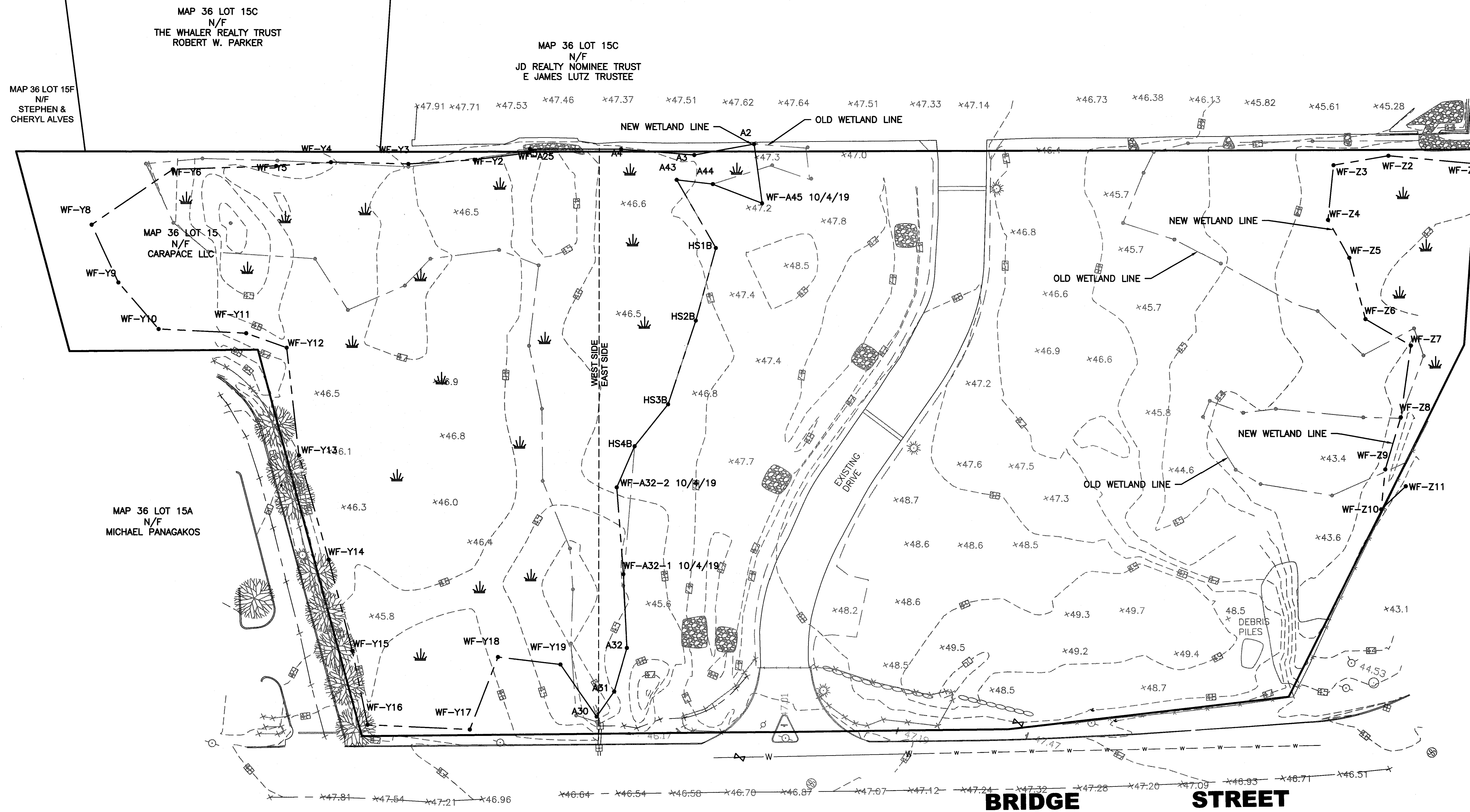


**NOTES:**

THE WESTERN WETLAND LINE (FLAGS WF-A1 TO WF-A26) WERE FLAGGED IN JULY 2014 BY BRANDON FANEUF OF ECOSYSTEMS SOLUTIONS. THE EASTERN WETLAND LINE (HS1B YO HS5B) WAS DELINEATED SEVERAL YEARS AGO BY PETER FLETCHER AND JOHN ROCKWELL. BOTH LINES WERE CONFIRMED BY THE FAIRHAVEN CONSERVATION COMMISSION IN 2015 BUT THIS APPROVAL HAS LAPSED. THE LINES HAVE BE RESTAKED IN APRIL 2019.



REV	DATE	DESCRIPTION	BY	APP.
7	10-8-19	NEW WETLAND LINE/ GENERAL REVISIONS	JAG	RJR
6	7-16-19	NEW BUILDING FOOTPRINT/SITE LAYOUT	JAG	RJR
5	6-24-19	NEW BUILDING FOOTPRINT/SITE LAYOUT	JAG	RJR
4	4-26-19	NEW BUILDING FOOTPRINT/SITE LAYOUT	JAG	RJR
3	9-4-15	GENERAL REVISIONS	TRW	RJR
2	8-25-15	REVISIONS PER PLANNING BOARD	EKW	RJR
1	7-10-15	GENERAL REVISIONS	EKW	RJR

DRAWING TITLE		<b>EXISTING CONDITIONS</b>		SCALE	1" = 30'
PROJECT		<b>250 BRIDGE STREET FAIRHAVEN, MASSACHUSETTS</b>		DATE	APRIL 27, 2015
CLIENT		<b>CARAPACE, LLC FAIRHAVEN, MASSACHUSETTS</b>		DRAWN BY:	EKW/TRW
DESIGNED BY:		RJR		CHECKED BY:	RJR
APPROVED BY:		RJR		PROJECT NO.	19830101

CIVIL ENGINEERING  
 LAND SURVEYING  
 ENVIRONMENTAL ASSESSMENT  
**PRIME ENGINEERING**  
 P.O. BOX 1088  
 330 BEDFORD ST.  
 LAKEVILLE, MA 02347  
 TEL: 508.947.0050  
 FAX: 508.947.2004

