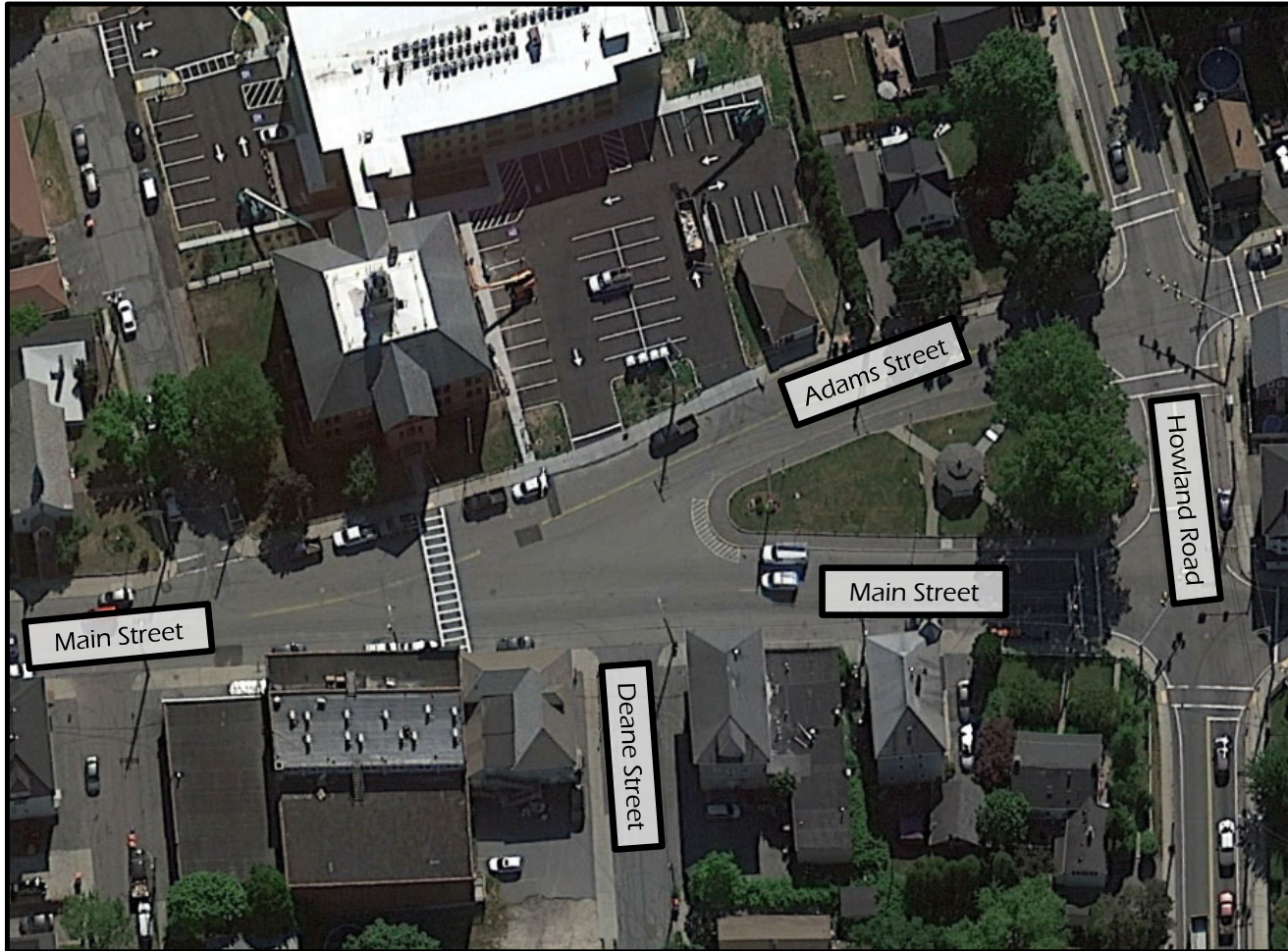


# Benoit Square Concept Plan



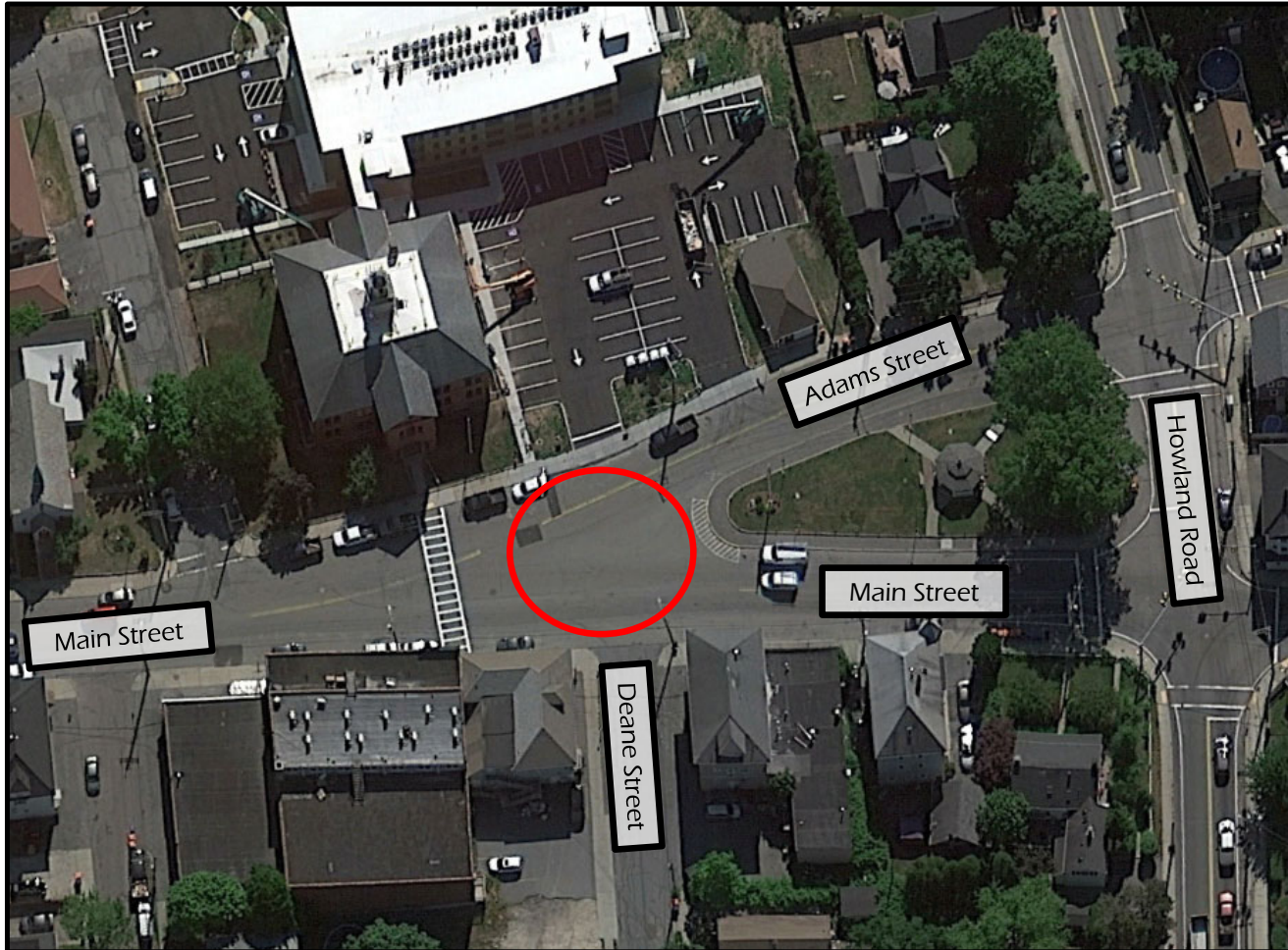
Benoit Square, Fairhaven, MA

# Existing Conditions

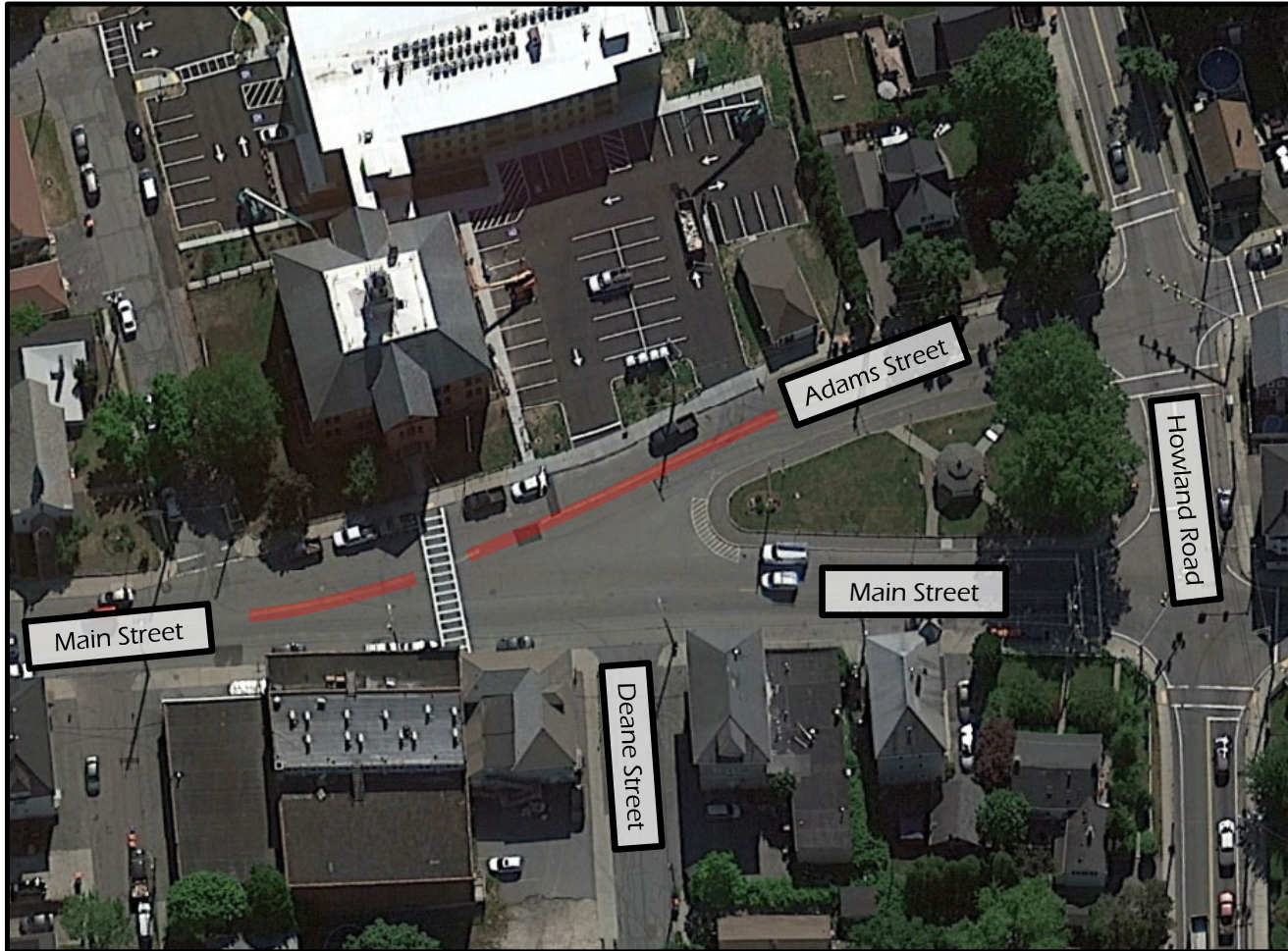




# Existing Conditions

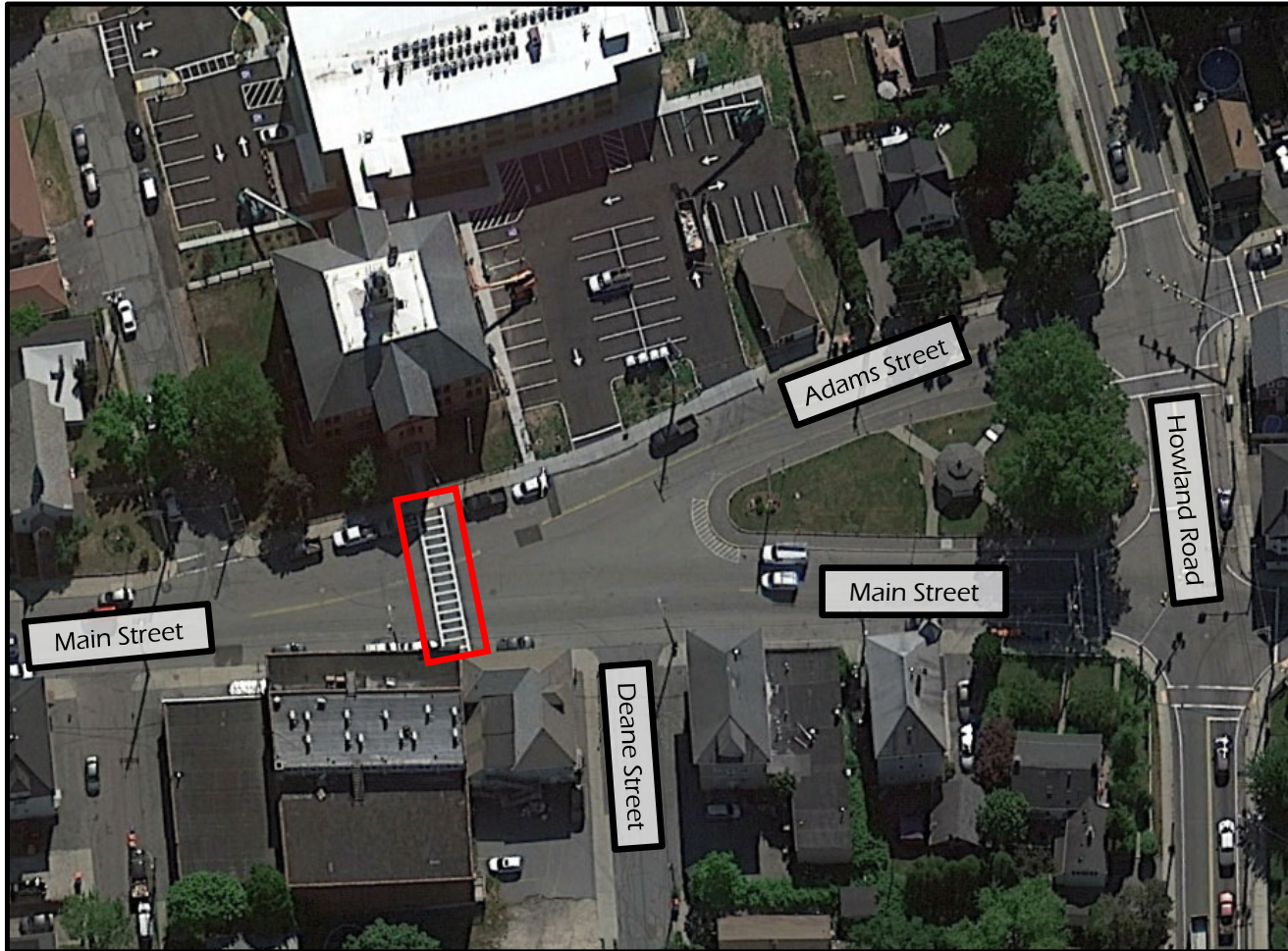


# Existing Conditions

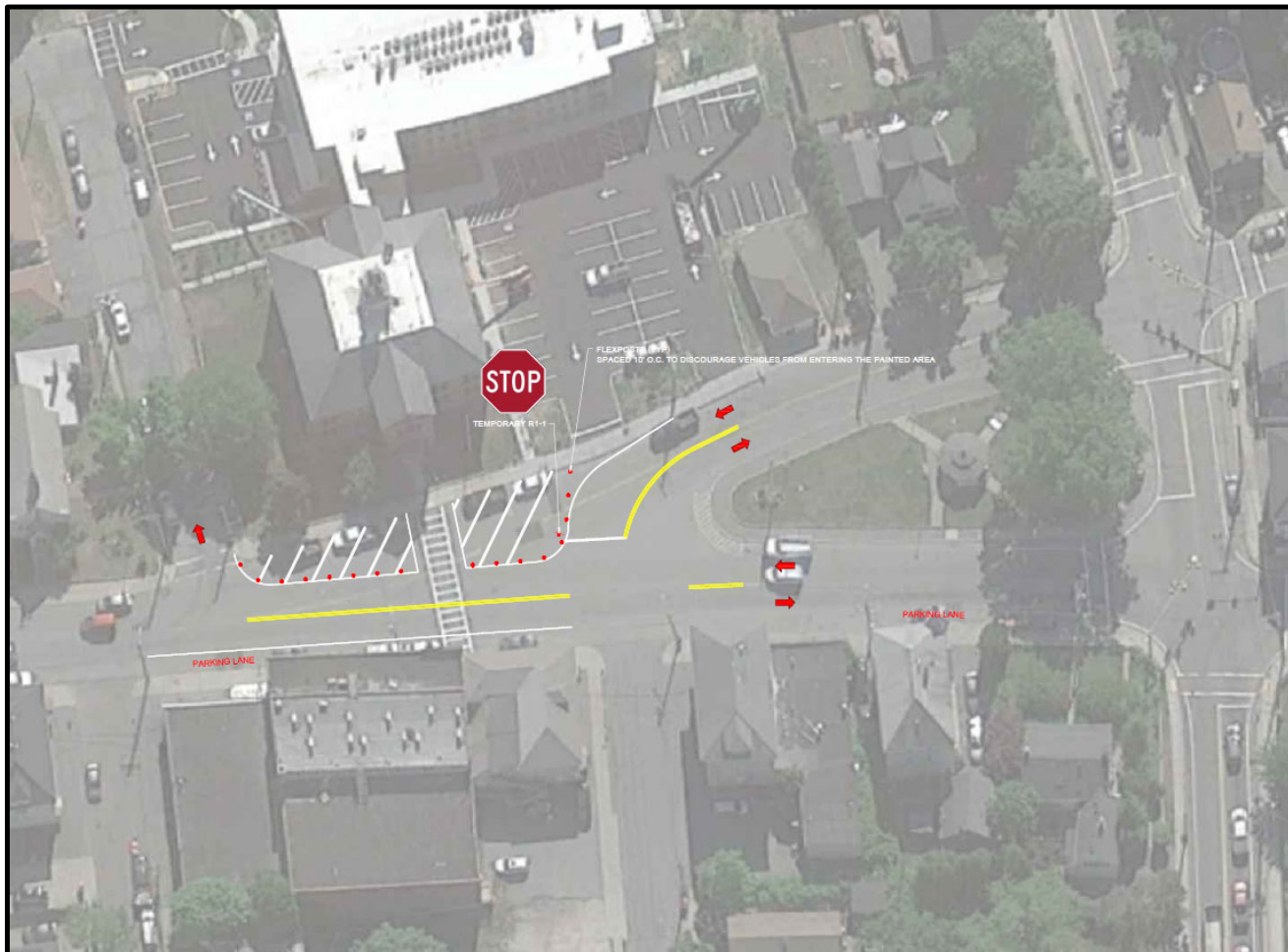




# Existing Conditions

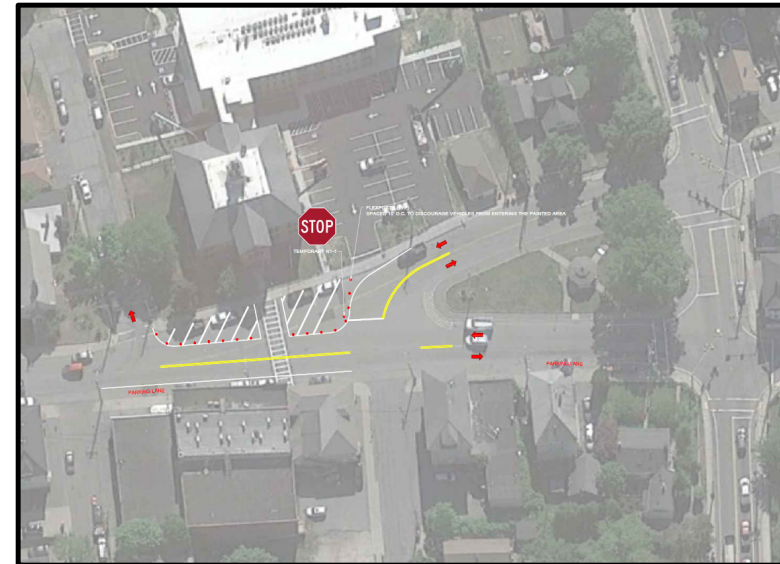


# Proposed Conditions



# Proposed Conditions

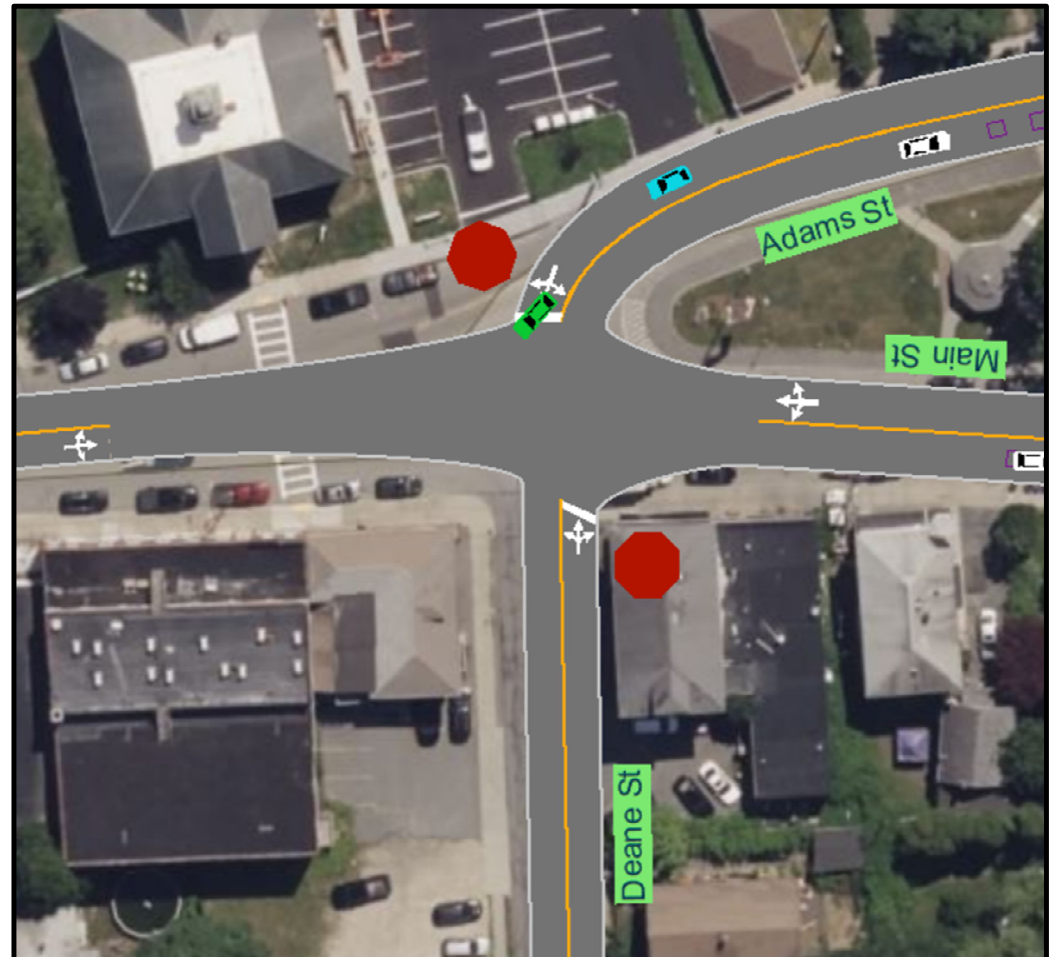
- Benefits
  - T-Intersection on Adams Street is a traffic calming measure.
  - Shortens the length of the crosswalk.
  - Clarifies right-of-way in the Square.
  - Maintains two-way operations on Main Street and Adams Street.
  - No modifications at the signals.
  - Maintains access to the Adams Street residential development.
  - No movement restrictions.





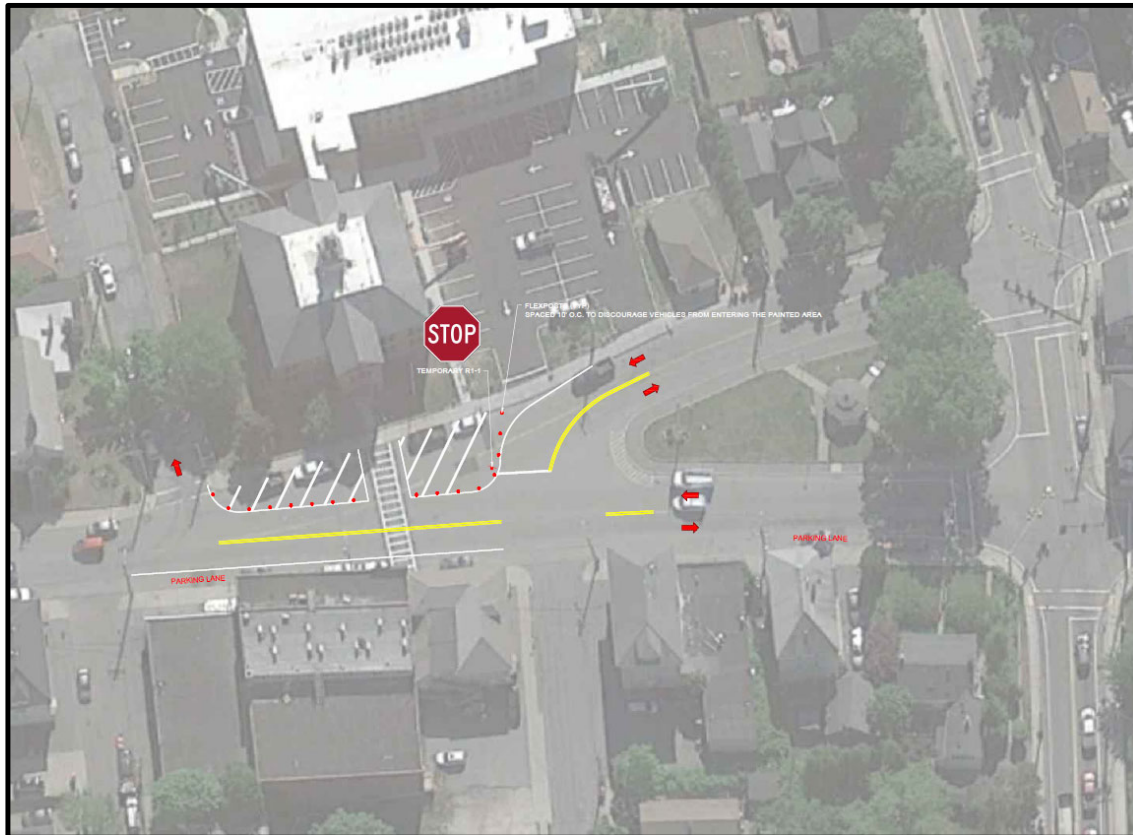
# Traffic Analysis

- Traffic analysis and simulation were conducted in accordance with MassDOT Traffic Impact Analysis guidelines.
- Impacts from the New Bedford-Fairhaven Swing Bridge closure were considered.
- All four approaches in the Square are expected to operate with low average delay for vehicles.
- Analysis results indicate that vehicle queues would not spill back to the adjacent traffic signals.





# Recommendations



- MassDOT recommends the Painted Bumpout and Flexposts concept.
  - Stop-controlled approaches shown to operate with low average delay or better.
  - No queue spillback expected on Adams Street.
  - Provides the greatest benefits for vulnerable road users.

Comments/Questions?