

Fairhaven Community Electricity Aggregation Program

- Savings of \$5.8 million since program launch in 2016
 - \$600/residential customer in past year
- Purchased over 3,863 MWh of additional Class I renewable energy (new renewables from New England): 3.3 MW of solar or 1,250 tons of CO2 avoided
- Current contract January 2021 - Dec 2023
- Executed new contract for Dec 2023 - Nov 2025

There is no guarantee of savings under the aggregation program as compared to the Eversource Basic Service rates because the Eversource electric supply charge changes every 6 months for residential and small business customers and every 3 months for large business customers

Current Contract

Standard/Default
(for automatic enrollment)



Adds 10% Class I Renewables

10.865 cents/kWh

Basic



Meets State minimums

10.470 cents/kWh

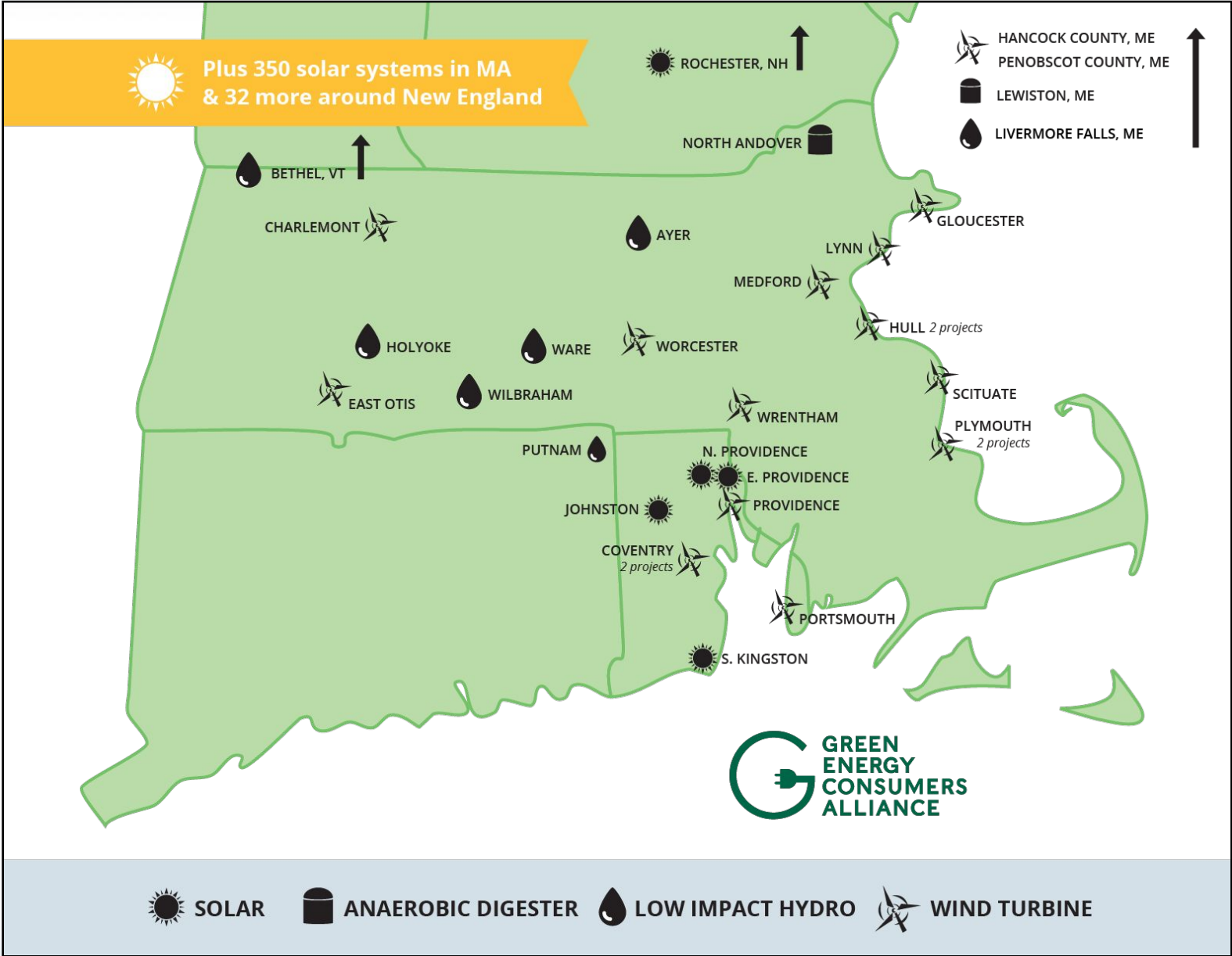
100%



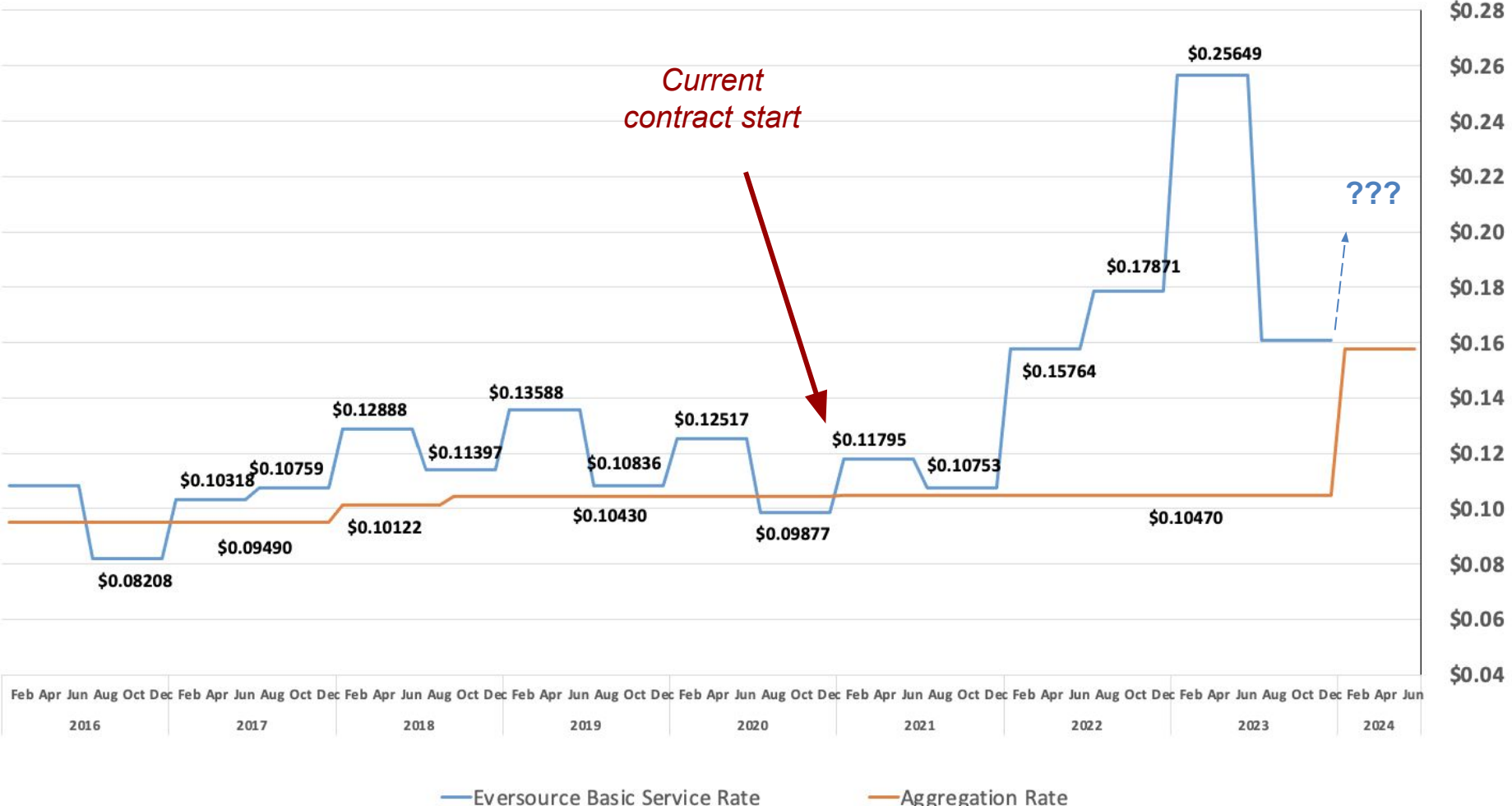
100%

14.420 cents/kWh

Year	Minimum Total Renewable Energy Content	Fairhaven Standard +10%
2020	27%	
2021	49%	59%
2022	51%	61%
2023	59%	69%
2024	62%	
2025	63%	



Comparing MASSCEA Aggregation to Eversource Residential Basic Service



There is no guarantee of savings under the aggregation program as compared to the Eversource Basic Service rates because the Eversource electric supply charge changes every 6 months for residential and small business customers and every 3 months for large business customers

Current Contract

Standard/Default
(for automatic enrollment)



Adds 10% Class I Renewables

10.865 cents/kWh

Basic



Meets State minimums

10.470 cents/kWh

100%



100%

14.420 cents/kWh

Next Contract

Standard/Default
(for automatic enrollment)



Meets State minimums

15.784 cents/kWh

100%



100%

17.373 cents/kWh

Extra MA Class I RECs	Cost for Average Residential User in Fairhaven (R-1)	
	Monthly	Annual
10% (current)	\$1.98	\$23.70
5%	\$1.00	\$12.03
10%	\$2.01	\$24.1
15%	\$3.01	\$36.1
20%	\$4.01	\$48.1

Appendix

Year	Clean Energy Standard*		CES-Existin g [^]	RPS Class II**	RPS Class II Waste Energy**	Total
	RPS Class I Carveout	Remainder				
2020	16%	4%		3%	4%	27%
2021	18%	4%	20%	4%	4%	49%
2022	20%	4%	20%	4%	4%	51%
2023	22%	4%	26%	4%	4%	59%
2024	24%	4%	27%	4%	4%	62%
2025	27%	3%	26%	4%	4%	63%
2026	30%	6%	26%	4%	4%	69%
2027	33%	9%	26%	4%	4%	75%
2028	36%	12%	26%	4%	4%	81%
2029	39%	15%	26%	4%	4%	87%
2030	40%	20%	26%	4%	4%	93%

Municipality	Contract End	Voluntary Class I		Municipality	Contract End	Voluntary Class I
Brookline	Dec-24	35%		Melrose	Nov-24	10%
Arlington	Nov-24	30%		Waltham	Dec-23	10%
Bedford	Nov-24	20%		Rockland	Dec-24	10%
Somerville	Dec-24	20%		Dedham	Dec-23	10%
Winchester	Dec-24	20%		Westford	Dec-23	10%
Sudbury	Dec-23	15%		Hamilton	Dec-23	5%
Fairhaven	Dec-23	10%		Stoneham	Dec-23	5%
Milton	Nov-24	10%		Medford	Dec-24	5%
Gloucester	Dec-24	10%		Millis	Dec-23	5%