

FAIRHAVEN HIGH SCHOOL - WINDOW RESTORATION (PHASE IV)

12 HUTTLESTON AVE., FAIRHAVEN, MA 02719 Application for CPA FY21 11.13.2020

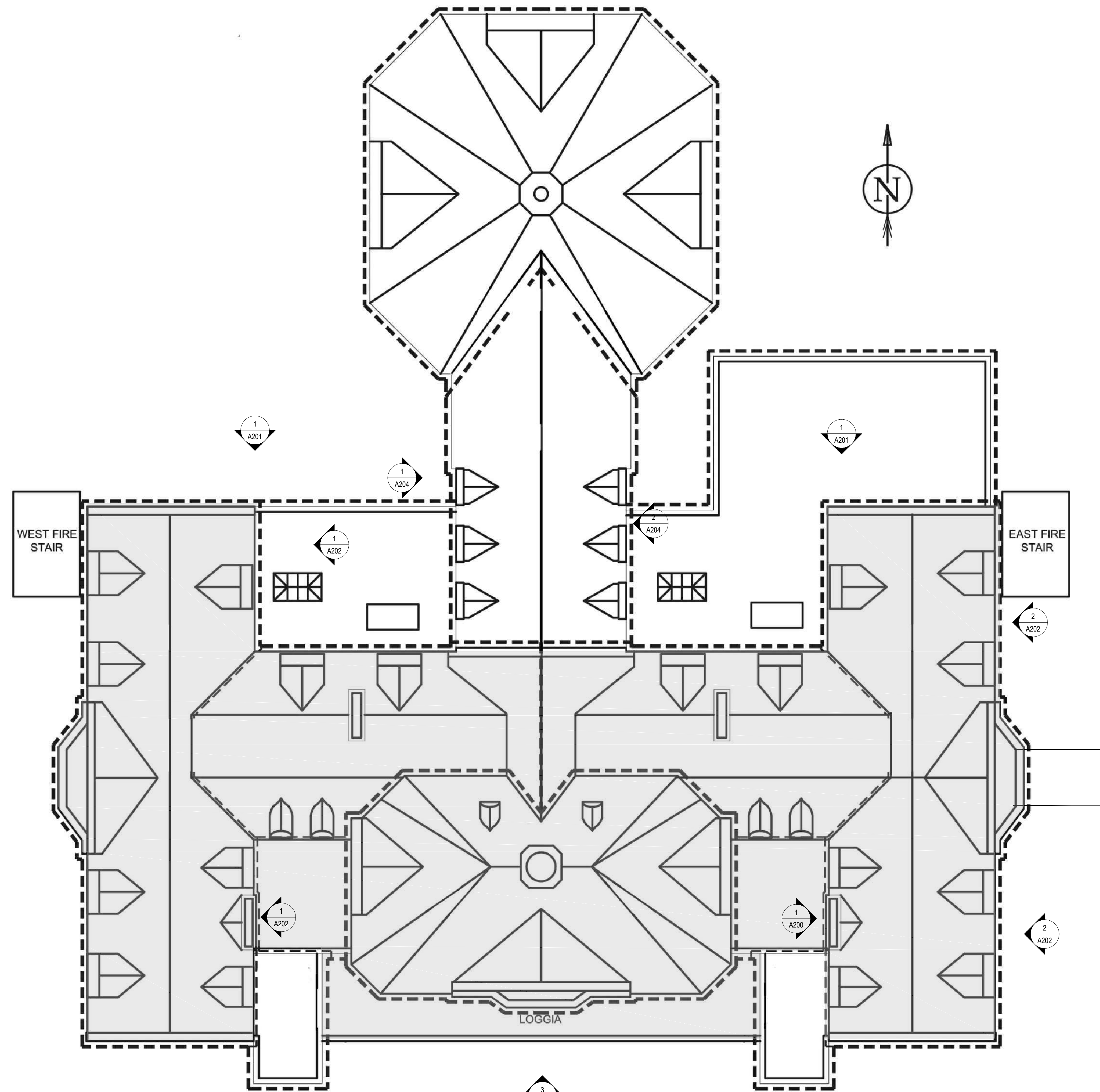


PROJECT TEAM

ARCHITECT
Spencer, Sullivan & Vogt
1 Thompson Square, Suite 504
Charlestown, MA 02129
617.861.4291

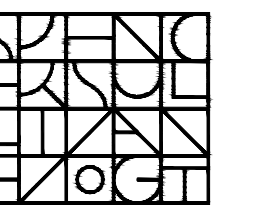
DRAWING INDEX

ARCHITECTURAL
A000 TITLE SHEET
A100 EXISTING FLOOR PLANS
A200 EXTERIOR ELEVATIONS
A201 EXTERIOR ELEVATIONS
A202 EXTERIOR ELEVATIONS
A203 EXTERIOR ELEVATIONS
A204 EXTERIOR ELEVATIONS
A300 WINDOW SCHEDULE
A400 WINDOW NOTES
A500 PHOTOS



ROOF PLAN

ARCHITECT:



Spencer, Sullivan & Vogt
ARCHITECTURE - PRESERVATION

1 Thompson Square | Suite 504
Charlestown, MA 02129-3308
T: (617) 861-4291
www.SSVarchitects.com

CONSULTANT:

OWNER:

PROJECT: CPA FY21

FAIRHAVEN HIGH SCHOOL
WINDOW RESTORATION
PHASE III

12 Huttleston Avenue
Fairhaven, MA 02719

KEY:



00 Nov. 13, 2020 CPA FY21 Submission
DATE DESCRIPTION

ISSUANCES:

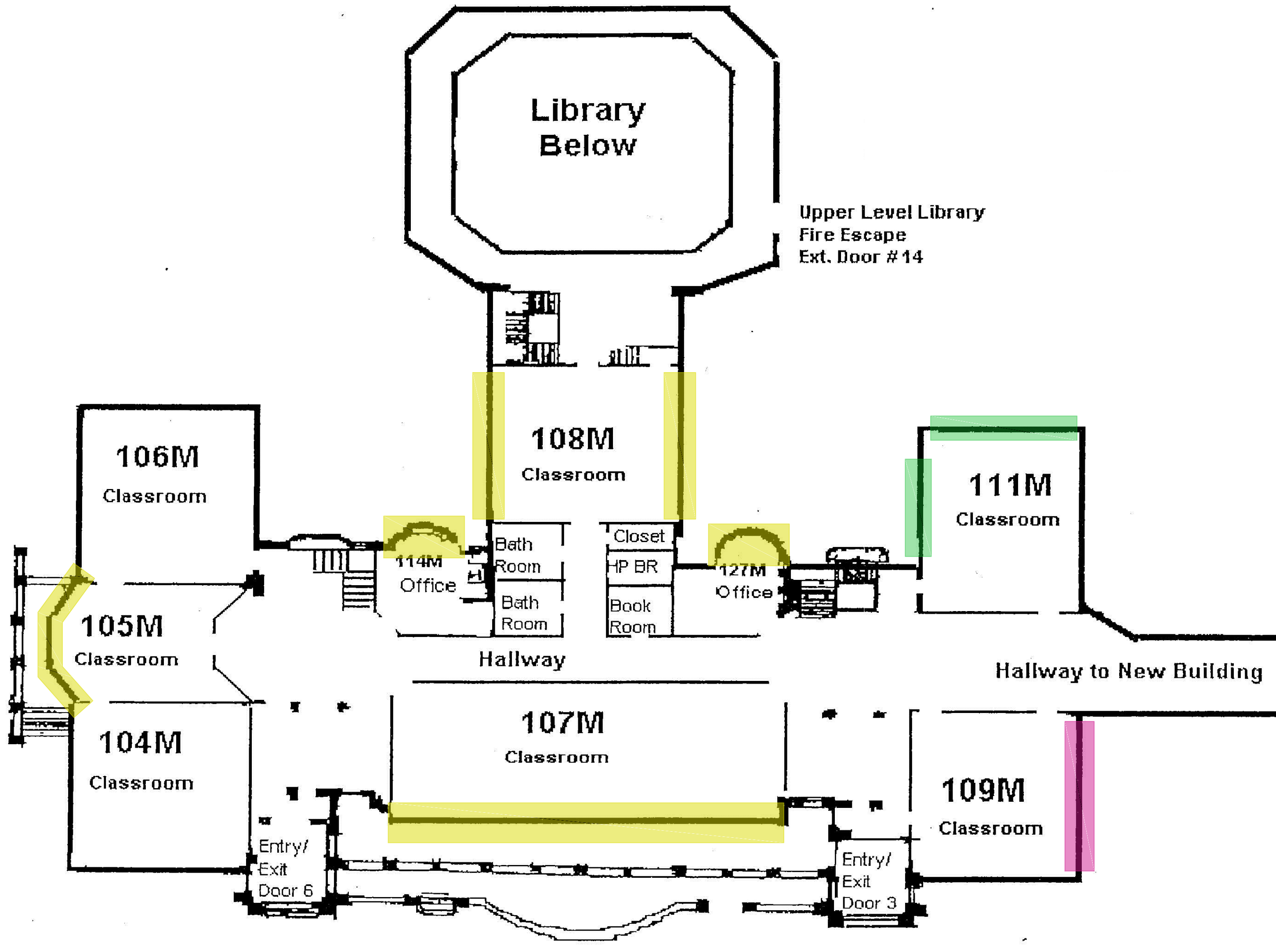
SEAL:

SHEET TITLE:

CONSTRUCTION DOCUMENTS
TITLE SHEET

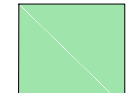



SHEET #:

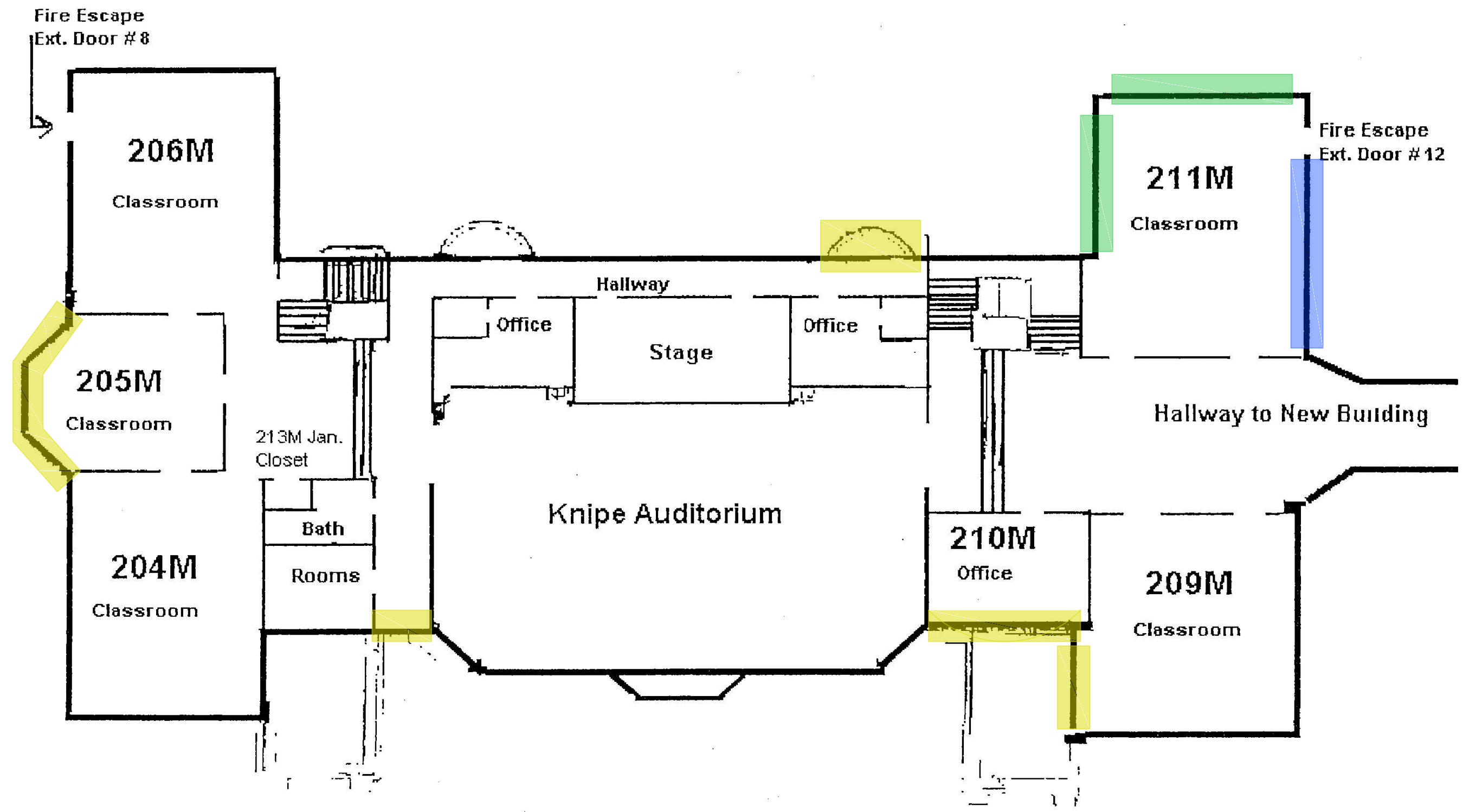
A-000



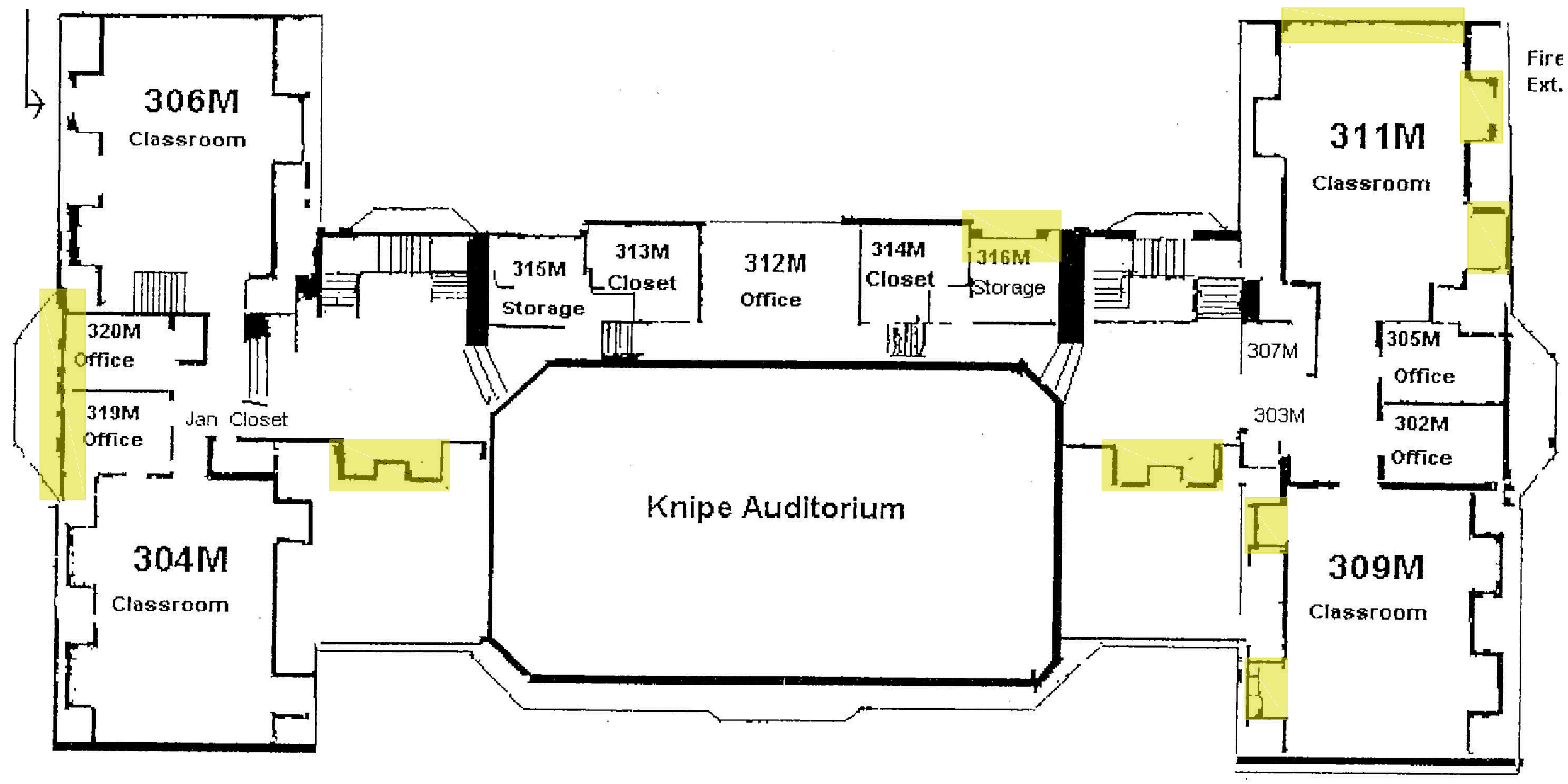
1 FIRST FLOOR PLAN - EXISTING BUILDING
 SCALE: NOT TO SCALE

WORK KEY - INDICATES
 WINDOWS TO BE
 RESTORED:

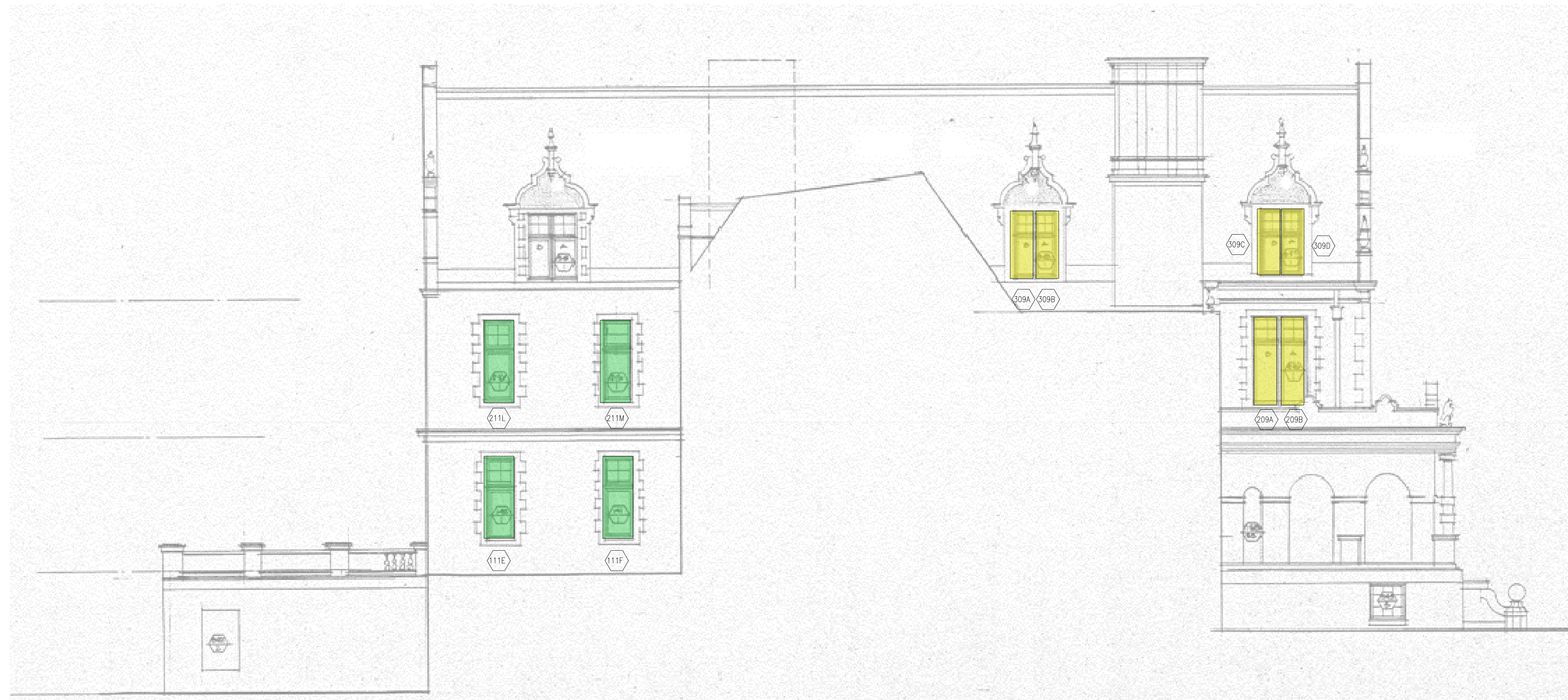
-  BASE BID
-  ALTERNATE NO. 1
-  ALTERNATE NO. 2
-  FUTURE PHASES



2 SECOND FLOOR PLAN - EXISTING BUILDING
 SCALE: NOT TO SCALE



3 THIRD FLOOR PLAN - EXISTING BUILDING
 SCALE: NOT TO SCALE

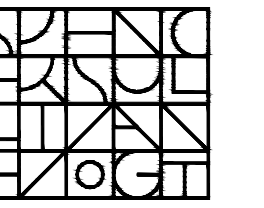


1 WEST ELEVATION - INNER
Scale: Not to Scale



2 WEST ELEVATION - OUTER
Scale: Not to Scale

ARCHITECT:



Spencer, Sullivan & Vogt
ARCHITECTURE - PRESERVATION

1 Thompson Square | Suite 504
Charlestown, MA 02129-3308
T: (617) 861-4291
www.SSVarchitects.com

CONSULTANT:

OWNER:

PROJECT: CPA FY21

**FAIRHAVEN HIGH SCHOOL
WINDOW RESTORATION
PHASE III**

12 Huttleston Avenue
Fairhaven, MA 02719

KEY:



| # | DATE | DESCRIPTION |
|----|---------------|---------------------|
| 00 | Nov. 13, 2020 | CPA FY21 Submission |

ISSUANCES:

SEAL:

SHEET TITLE:

CONSTRUCTION DOCUMENTS
EXTERIOR ENLARGED ELEVATIONS

SHEET #:

A-200

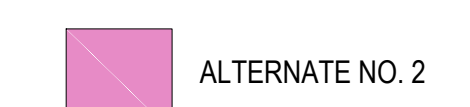
**WORK KEY - INDICATES
WINDOWS TO BE
RESTORED:**



BASE BID



ALTERNATE NO. 1

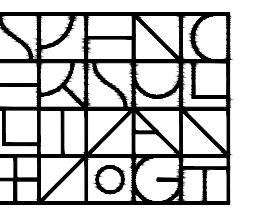


ALTERNATE NO. 2



FUTURE PHASES

ARCHITECT:



Spencer, Sullivan & Vogt
ARCHITECTURE - PRESERVATION

1 Thompson Square | Suite 504
Charlestown, MA 02129-3308
T: (617) 861-4291
www.SSVarchitects.com

CONSULTANT:

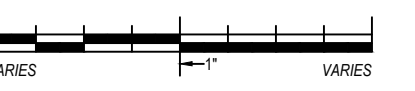
OWNER:

PROJECT: CPA FY21

**FAIRHAVEN HIGH SCHOOL
WINDOW RESTORATION
PHASE III**

12 Huttleston Avenue
Fairhaven, MA 02719

KEY:



00 Nov. 13, 2020 CPA FY21 Submission
DATE DESCRIPTION

ISSUANCES:

SEAL:

SHEET TITLE:
CONSTRUCTION DOCUMENTS
EXTERIOR ELEVATIONS

SHEET #:

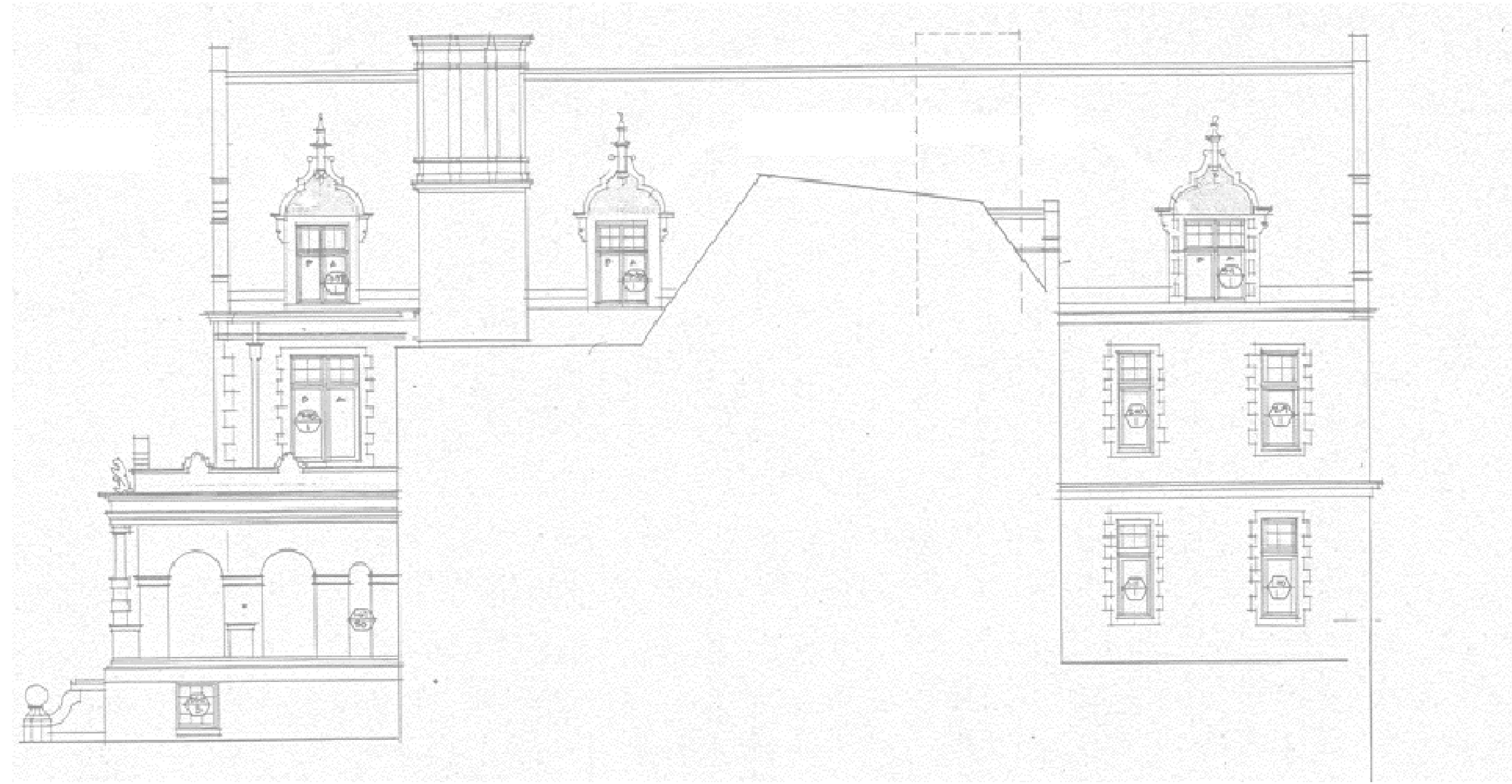
A-201



1 NORTH ELEVATION
Scale: Not to Scale

**WORK KEY - INDICATES
WINDOWS TO BE
RESTORED:**

- BASE BID
- ALTERNATE NO. 1
- ALTERNATE NO. 2
- FUTURE PHASES



1 EAST ELEVATION - INNER
Scale: Not to Scale



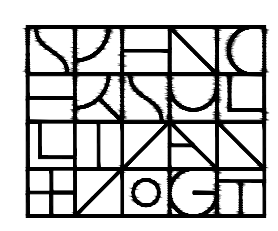
2 EAST ELEVATION - OUTER
Scale: Not to Scale

HALLWAY / CONNECTOR TO NEW BUILDING

WORK KEY - INDICATES WINDOWS TO BE RESTORED:

- BASE BID
- ALTERNATE NO. 1
- ALTERNATE NO. 2
- FUTURE PHASES

ARCHITECT:



Spencer, Sullivan & Vogt
ARCHITECTURE - PRESERVATION

1 Thompson Square | Suite 504
Charlestown, MA 02129-3308
T: (617) 861-4291
www.SSVarchitects.com

CONSULTANT:

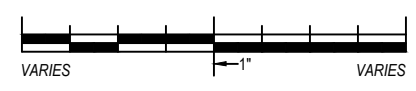
OWNER:

PROJECT: CPA FY21

FAIRHAVEN HIGH SCHOOL WINDOW RESTORATION PHASE III

12 Huttleston Avenue
Fairhaven, MA 02719

KEY:



| # | DATE | DESCRIPTION |
|----|---------------|---------------------|
| 00 | Nov. 13, 2020 | CPA FY21 Submission |

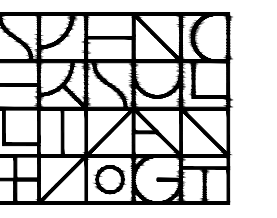
ISSUANCES:

SEAL:

SHEET TITLE:
CONSTRUCTION DOCUMENTS
EXTERIOR ELEVATIONS

SHEET #:
A-202

ARCHITECT:



Spencer, Sullivan & Vogt
ARCHITECTURE - PRESERVATION

1 Thompson Square | Suite 504
Charlestown, MA 02129-3308
T: (617) 861-4291
www.SSVarchitects.com

CONSULTANT:

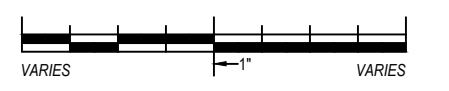
OWNER:

PROJECT: CPA FY21

**FAIRHAVEN HIGH SCHOOL
WINDOW RESTORATION
PHASE III**

12 Huttleston Avenue
Fairhaven, MA 02719

KEY:



| # | DATE | DESCRIPTION |
|----|---------------|---------------------|
| 00 | Nov. 13, 2020 | CPA FY21 Submission |

ISSUANCES:

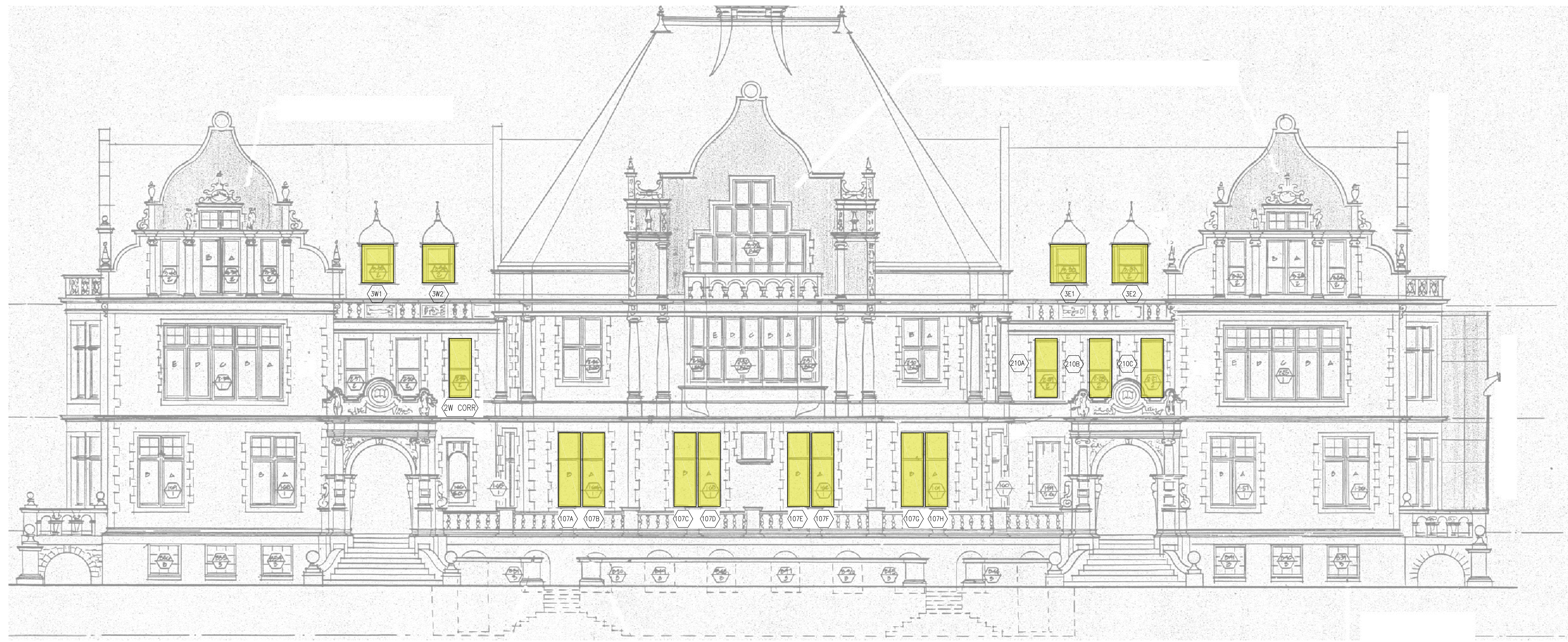
SEAL:

SHEET TITLE:

CONSTRUCTION DOCUMENTS
EXTERIOR ELEVATIONS

SHEET #:

A-203



**WORK KEY - INDICATES
WINDOWS TO BE
RESTORED:**

- BASE BID
- ALTERNATE NO. 1
- ALTERNATE NO. 2
- FUTURE PHASES

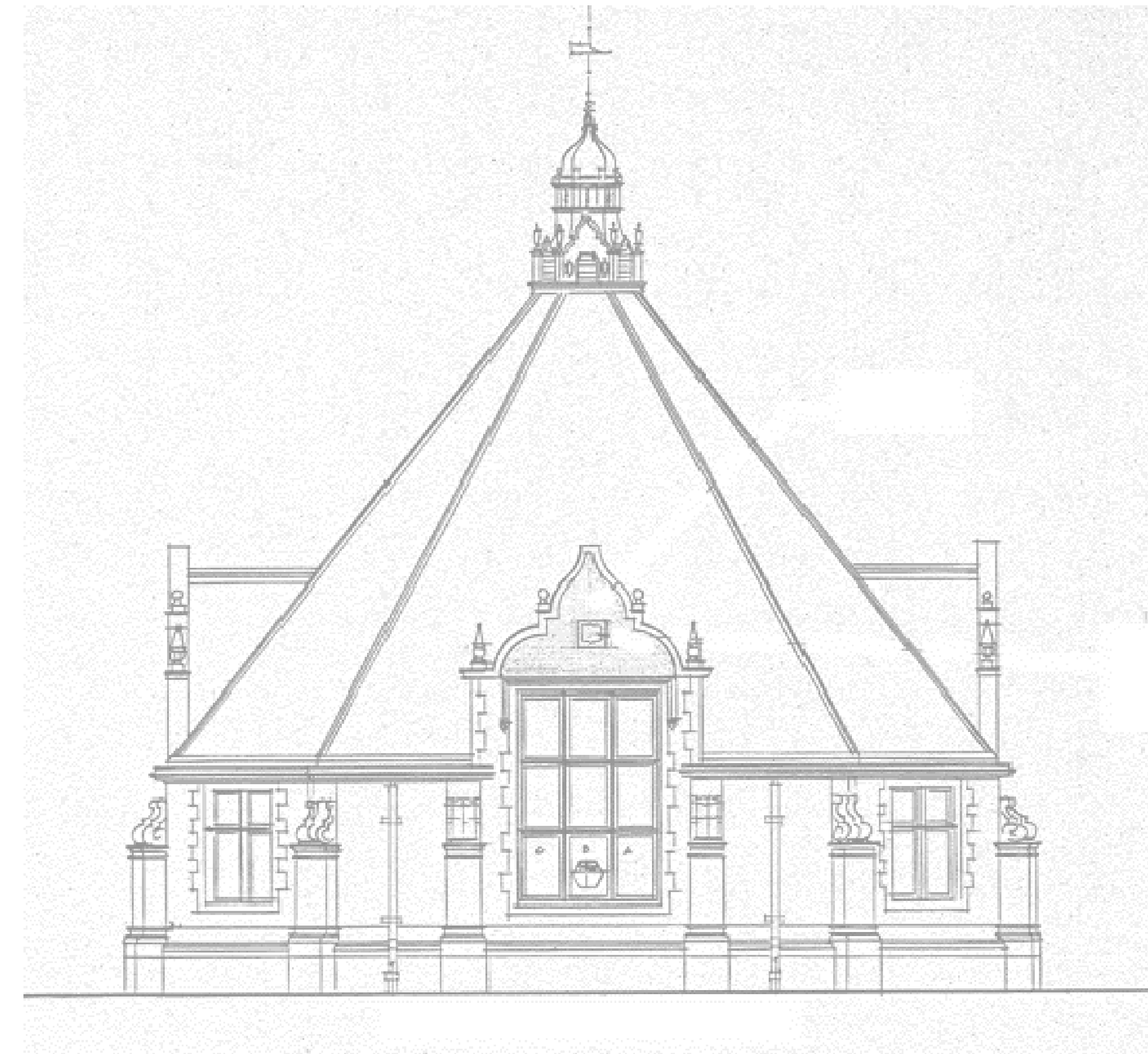
3 SOUTH ELEVATION
Scale: Not to Scale



1 WEST ELEVATION - REAR WING
Scale: Not to Scale



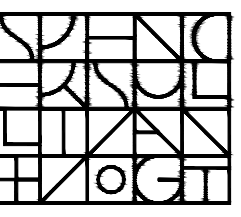
2 EAST ELEVATION - REAR WING
Scale: Not to Scale



3 NORTH ELEVATION - REAR WING
Scale: Not to Scale

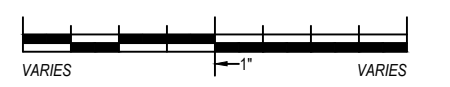
WORK KEY - INDICATES
WINDOWS TO BE
RESTORED:

- BASE BID
- ALTERNATE NO. 1
- ALTERNATE NO. 2
- FUTURE PHASES

ARCHITECT:

Spencer, Sullivan & Vogt
 ARCHITECTURE - PRESERVATION
 1 Thompson Square | Suite 504
 Charlestown, MA 02129-3308
 T: (617) 861-4291
 www.SSVarchitects.com

CONSULTANT:
 OWNER:

PROJECT: CPA FY21
**FAIRHAVEN HIGH SCHOOL
 WINDOW RESTORATION
 PHASE III**
 12 Huttleston Avenue
 Fairhaven, MA 02719

KEY:


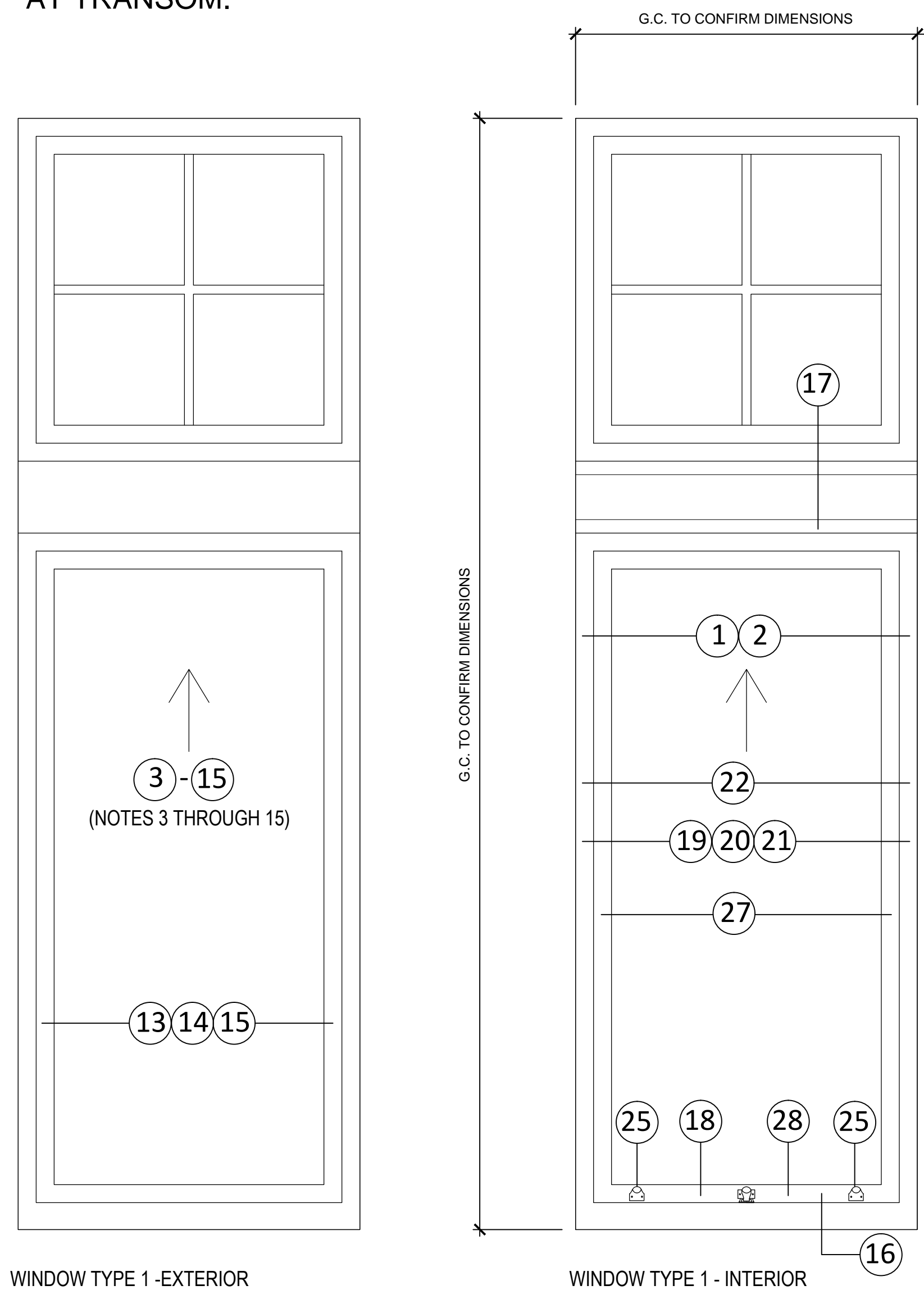
| # | DATE | DESCRIPTION |
|----|---------------|---------------------|
| 00 | Nov. 13, 2020 | CPA FY21 Submission |

ISSUANCES:
 SEAL:

SHEET TITLE:
**CONSTRUCTION DOCUMENTS
 EXTERIOR ELEVATIONS**

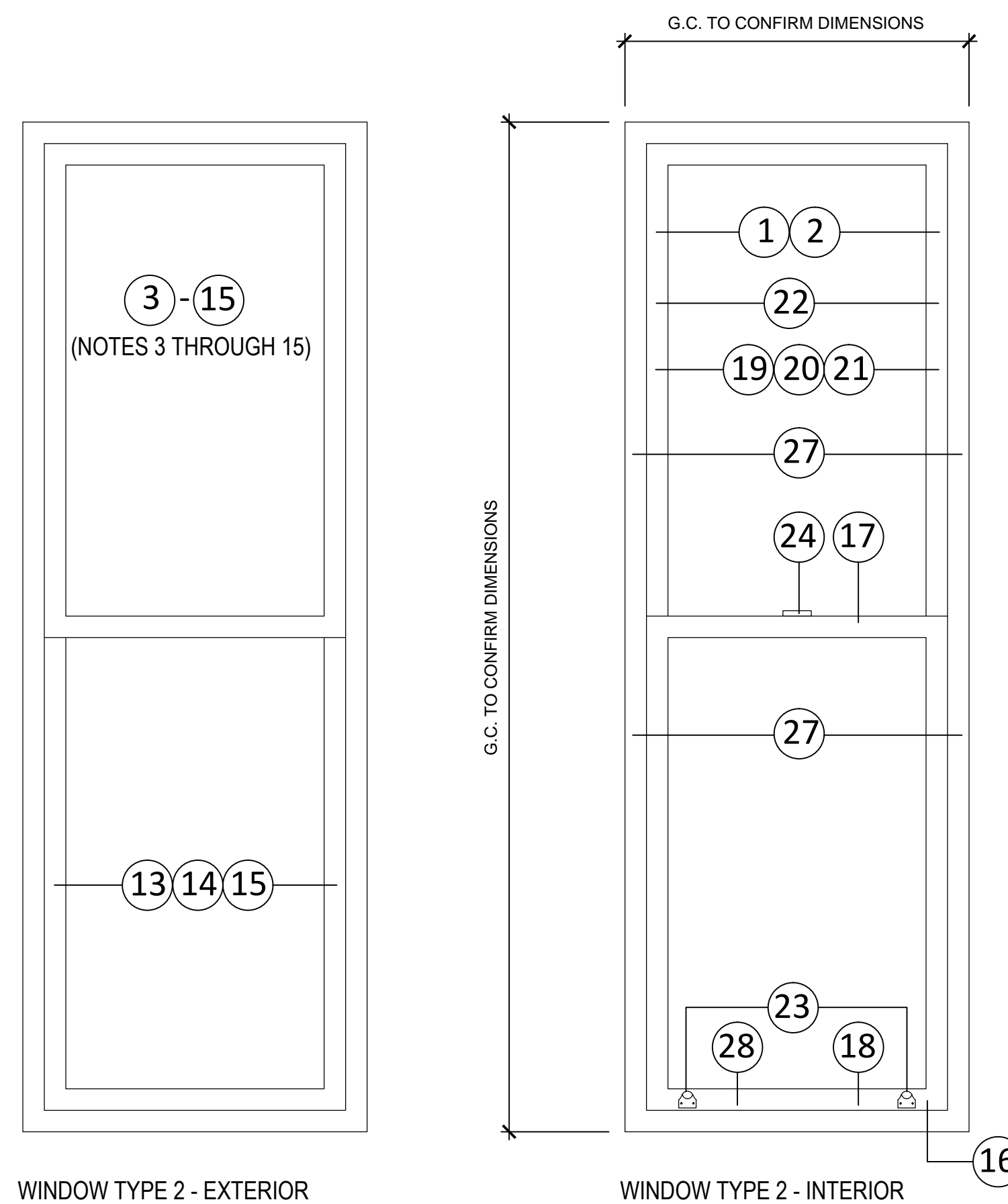
SHEET #:
A-204

NOTE: AT WINDOW TYPE 1, NO WORK IS TO BE DONE AT TRANSOM.



WINDOW TYPE 1 - EXTERIOR

WINDOW TYPE 1 - INTERIOR



WINDOW TYPE 2 - EXTERIOR

WINDOW TYPE 2 - INTERIOR

1 WINDOW TYPE 1 - SINGLE HUNG WITH FIXED TRANSOM
SCALE: 1"=1'-0" @ 24X36 PRINT

3 WINDOW TYPE 2 - DOUBLE HUNG
SCALE: 1"=1'-0" @ 24X36 PRINT

WINDOW SCOPE NOTES

- 1 Remove and salvage all sash lifts, locks and pulleys.
- 2 Remove all spring balance channels from sash stiles.
- 3 Remove all existing glazing putty.
- 4 Remove existing insulated glazing.
- 5 Remove all existing paint from exterior sash surfaces.
- 6 Install wood Dutchmen in former spring balance channels in stiles.
- 7 Rout-out new Dutchmen in stiles to receive new sash chains.
- 8 Prepare exterior wood surface for primer coat of paint.
- 9 Apply prime coat of paint to exterior face of sash.
- 10 Apply tinted coat of stain to bottom surface of sash.
- 11 Apply prime coat of paint to full perimeter of glazing bed.
- 12 Do not apply any paint to sides or tops of sash.
- 13 Set new insulated glass unit in continuous glazing bed of wet sealant.
- 14 Once silicone sealant has dried, remove excess and apply one-part polyurethane construction sealant on exterior.
- 15 Provide two finish coats of paint to exterior sash surfaces, including bottom.
- 16 Fill holes on interior face of sash from hardware locations with tinted wood filler.
- 17 Provide bronze J-hook weather-stripping along top edge of meeting rail.
- 18 Use tinted stain and shellac to blend-in surface scrapes and blemishes on interior face of sash.
- 19 Provide new sash weight pulleys and sash chains at each window jamb.
- 20 Provide Dutchmen to patch original rabbeted areas left exposed, above and below new sash weight pulleys; apply stain and shellac to match adjacent surfaces.
- 21 Connect new sash chains to existing sash weights still in sash weight pockets.
- 22 Add additional sash weights, as required, to balance weight of reglazed sash. (Unit Price No. 2)
- 23 Provide two (2) new oil-rubbed bronze sash lifts per each double-hung sash.
- 24 Provide one (1) new oil-rubbed sash lock at top center of each double-hung sash. Note: Provide unit price.
- 25 Provide two (2) new oil-rubbed sash lifts/locks at center of bottom rail of single-hung sash.
- 26 Provide oil-rubbed screws where screws are missing at perimeter window stops.
- 27 Provide bronze spring weather-stripping at full height of each window sash at each jamb, if missing. (Unit Price No. 3)
- 28 Provide ribbed bronze weather-stripping along bottom of window sill, if missing. (Unit Price No. 3)

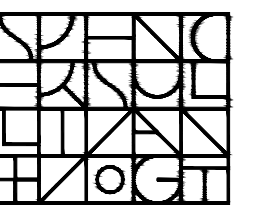
NOTE: WINDOW KEY NOTES 1 THROUGH 23 APPLY TO ALL WINDOWS.

UNIT PRICE NO. 1 WORK: Where advanced weathering/deterioration of window sills exists, strip paint from sill, prepare wood for epoxy consolidation, followed by application of epoxy patching materials. Sand surfaces smooth to receive primer and finish coats of paint.

UNIT PRICE NO. 2 WORK: Where existing sash weights are missing from sash weight pockets, provide new sash weights as required to balance weight of each sash.

UNIT PRICE NO.3 WORK: Where existing bronze weather-stripping is missing at window jambs or bottom of sash, provide new bronze weather-stripping.

ARCHITECT:



Spencer, Sullivan & Vogt
ARCHITECTURE - PRESERVATION

1 Thompson Square | Suite 504
Charlestown, MA 02129-3308
T: (617) 861-4291
www.SSVarchitects.com

CONSULTANT:

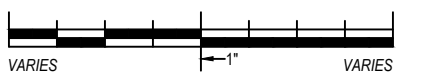
OWNER:

PROJECT: CPA FY21

FAIRHAVEN HIGH SCHOOL
WINDOW RESTORATION
PHASE III

12 Huttleston Avenue
Fairhaven, MA 02719

KEY:



| | | |
|----|---------------|---------------------|
| 00 | Nov. 13, 2020 | CPA FY21 Submission |
| # | DATE | DESCRIPTION |

ISSUANCES:

SEAL:

SHEET TITLE:

CONSTRUCTION DOCUMENTS
WINDOW SCHEDULE

SHEET #:

A-300

SCOPE OF PROPOSED WINDOW RESTORATION WORK

On-Site Window Removal

- 8.2.1 Remove sash from window opening. Apply window number to side of right-hand stile, following number system used on elevation drawings.
- 8.2.2 Remove existing sash balance mounting board and mechanism from each side of upper window jamb.
- 8.2.3 Transport sashes to off-site workshop for repair treatment.
- 8.2.4 Place ½” plywood panels (painted on exterior face) in window openings and secure with wood blocks, anchored with screws to sash channels. Space wood blocks approximately 2'-0” o.c. vertically.
- 8.2.5 All transom window sashes are to remain in-place.
- 8.2.6 All existing sash weights in sash weight pockets are also to remain in-place for reuse, once sash are restored and returned to site.

Repair Workshop

- 8.8.1 Inventory all window sashes upon arrival at off-site repair workshop. Provide architect with copy of inventory list of all removed window sashes.
- 8.8.2 Remove and salvage all applied sash lifts and sash lock mechanisms. Separate hardware into clear plastic bags clearly identified with window number.
- 8.8.3 Remove all glazing putty around perimeter of each insulated glass unit.
- 8.8.4 Remove existing insulated glazing units and discard. No existing glazing will be reused.
- 8.8.5 Strip paint from all exterior surfaces of each sash down to bare wood. Sand all stripped surfaces to create smooth surfaces for painting.

- 8.8.6 Prepare Dutchmen hardwood strips (white oak or mahogany only) for insertion into channels cut into sides of each sash stile to receive previous spring balance system.
- 8.8.7 Use epoxy glue to secure Dutchmen into existing channels of sash stiles. Fill any gaps around Dutchmen with epoxy patching compound and sand smooth to match level of surrounding surfaces. Sand all stripped surfaces to create smooth adjoining surfaces.
- 8.8.8 Use router to create recessed channel and anchorage for sash chains along edge of each stile.
- 8.8.9 Provide new insulated glazing sized to fit into each sash. Glass size should be slightly smaller than sash opening to allow for thermal expansion. Set glazing in bed of brown-tinted silicone sealant.
- 8.8.10 Provide continuous wet sealant around perimeter of glazing. Do not use standard glazing putty. Strike surface of wet sealant to imitate appearance of traditional glazing putty.
- 8.8.11 Provide bronze weather-stripping along upper edge of each sash section at meeting rail, to engage with similar section applied to underside of existing horizontal transom.
- 8.8.12 Fill holes on interior faces of sash rails where sash locks and sash lifts have been removed. Use tinted wood putty to match adjoining color of wood.
- 8.8.13 Transport restored window sashes back to site for reinstallation.
- 8.9.1 Apply alkyd primer coat to all exterior sash surfaces, including glazing beds. Do not paint sides of stiles.
- 8.9.2 Provide two (2) finish coats of alkyd latex paint to exterior of each window sash.
- 8.9.3 Apply alkyd primer coat to all exterior sill surfaces. Do not paint sides of jambs or sash channels. (UNIT PRICE NO. 1 WORK)
- 8.9.4 Provide two (2) finish coats of alkyd latex paint to each exterior

- 8.9.5 Use stain and shellac to tint any abraded or damaged wood on interior face and bottom of window sash, and adjoining wood stops. Match surface patina and color of existing wood.

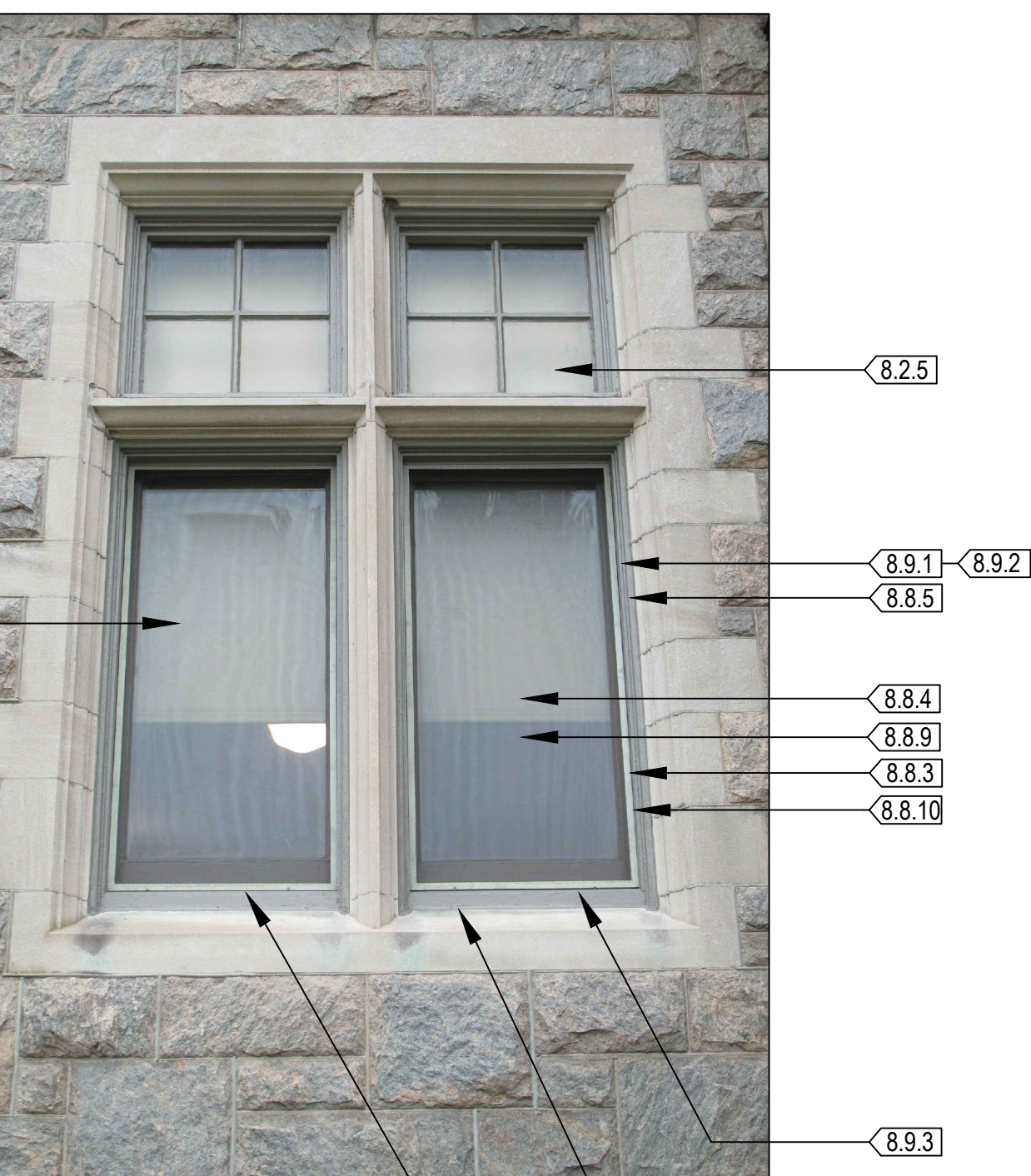
On-Site Preparation of Window Openings

- 8.8.14 Strip paint from each window sill identified as requiring epoxy consolidation and patching. (UNIT PRICE NO. 1 WORK)
- 8.8.15 Use specified epoxy wood repair system to stabilize deteriorating wood sill and to fill weathered areas. (UNIT PRICE NO. 1 WORK)
- 8.8.16 Provide new sash weight pulleys at jambs of each window opening. New pulleys to be sized to match original rabbeted pulley location and sizes.
- 8.8.17 Not used.
- 8.8.18 Remove sash weight access panels and confirm that sash weights exist and can be reused.
- 8.8.19 Provide new spring bronze weather-stripping along each stile and bottom rail of each sash, if missing. (UNIT PRICE NO. 3 WORK)
- 8.8.20 Wash both sides of new insulated window glass before installation.
- 8.8.21 Remove window stops, install restored window sashes, and attach new bronze sash chains to sides of each sash. Add additional sash weights, as required, to balance weight of each sash.
- 8.8.22 Add additional sash weights, as required, to balance weight of each sash. (UNIT PRICE NO. 2 WORK)
- 8.8.23 Provide two (2) new bronze sash lifts/ locks per single-hung sash.
- 8.8.24 Provide one (1) new bronze sash lock per double-hung sash.
- 8.8.25 If missing, provide new bronze screws at both side window stops and bottom window stop to match finish and color of sash lifts and sash locks.
- 8.8.26 Provide two (2) new bronze sash lifts per double-hung sash.

UNIT PRICE NO. 1 WORK: Where advanced weathering/deterioration of window sills exists, strip paint from sill, prepare wood for epoxy consolidation, followed by application of epoxy patching materials. Sand surfaces smooth to receive primer and finish coats of paint.

UNIT PRICE NO. 2 WORK: Where existing sash weights are missing from sash weight pockets, provide new sash weights as required to balance weight of each sash.

UNIT PRICE NO.3 WORK: Where existing bronze weather-stripping is missing at window jambs or bottom of sash, provide new bronze weather-stripping.



WINDOW TYPE 1 - EXTERIOR VIEW; SINGLE HUNG WINDOW WITH FIXED 2 OVER 2 TRANSOM ABOVE.



WINDOW TYPE 2 - EXTERIOR DOUBLE-HUNG WINDOW (AREA INDICATED)

ARCHITECT:

Spencer, Sullivan & Vogt
ARCHITECTURE - PRESERVATION

1 Thompson Square | Suite 504
Charlestown, MA 02129-3308
T: (617) 861-4291
www.SSVarchitects.com

CONSULTANT:

OWNER:

PROJECT: CPA FY21

FAIRHAVEN HIGH SCHOOL WINDOW RESTORATION PHASE III

12 Huttleston Avenue
Fairhaven, MA 02719

KEY:

| | | |
|------------|---------------|---------------------|
| 00 | Nov. 13, 2020 | CPA FY21 Submission |
| # | DATE | DESCRIPTION |
| ISSUANCES: | | |
| SEAL: | | |

| | | |
|-------------------------------------|--|--|
| SHEET TITLE: | | |
| CONSTRUCTION DOCUMENTS WINDOW NOTES | | |
| SHEET #: | | |

