

**United States Department of the Interior
National Park Service**

**National Register of Historic Places
Registration Form**

This form is for use in nominating or requesting determinations for individual properties and districts. See instructions in How to Complete the National Register of Historic Places Registration Form (National Register Bulletin 16A). Complete each item by marking "x" in the appropriate box or by entering the information requested. If any item does not apply to the property being documented, enter "N/A" for "not applicable." For functions, architectural classification, materials, and areas of significance, enter only categories and subcategories from the instructions. Place additional entries and narrative items on continuation sheets (NPS Form 10-900a). Use a typewriter, word processor, or computer, to complete all items.

1. Name of Property

historic name Rogers Memorial Church

other names/site number Unitarian Memorial Church

2. Location

street & number 102 Green Street N/A not for publication

city or town Fairhaven N/A vicinity

state Massachusetts code MA county Bristol code 005 zip code 02719

3. State/Federal Agency Certification

As the designated authority under the National Historic Preservation Act of 1986, as amended, I hereby certify that this nomination request for determination of eligibility meets the documentation standards for registering properties in the National Register of Historic Places and meets the procedural and professional requirements set forth in 36 CFR Part 60. In my opinion, the property meets does not meet the National Register Criteria. I recommend that this property be considered significant nationally statewide locally. (See continuation sheet for additional comments.)

Judith B. McDonough / BSS October 15, 1996

Signature of certifying official/Title Judith B. McDonough, Executive Director Date

Massachusetts Historical Commission, State Historic Preservation Officer

State or Federal agency and bureau

In my opinion, the property meets does not meet the National Register criteria. (See continuation sheet for additional Comments.)

Signature of certifying official/Title _____ Date

State or Federal agency and bureau

4. National Park Service Certification

I, hereby certify that this property is:

entered in the National Register

See continuation sheet.

determined eligible for the National Register

See continuation sheet.

determined not eligible for the National Register

removed from the National Register

other (explain): _____

Signature of the Keeper _____

Date of Action _____

Unitarian Memorial Church
Name of Property

Bristol County, Massachusetts
County and State

5. Classification

Ownership of Property
(Check as many boxes as apply)

- private
- public-local
- public-State
- public-Federal

Category of Property
(Check only one box)

- building(s)
- district
- site
- structure
- object

Number of Resources within Property
(Do not include previously listed resources in the count.)

Contributing	Noncontributing	
3		building
		sites
		structures
		objects
3		Total

Name of related multiple property listing
(Enter "N/A" if property is not part of a multiple property listing.)

N/A

Number of contributing resources previously listed in the National Register

0

6. Function or Use

Historic Functions
(Enter categories from instructions)

RELIGION / religious facility
/ church-related residence

Current Functions
(Enter categories from instructions)

RELIGION / religious facility

7. Description

Architectural Classification
(Enter categories from instructions)

Late Gothic Revival

Materials
(Enter categories from instructions)

foundation STONE / granite
walls STONE / granite, limestone;
BRICK; STUCCO
roof METAL / copper; STONE / slate
other TERRA COTTA (chimney)

Narrative Description

(Describe the historic and current condition of the property on one or more continuation sheets.)

See attached.

8. Statement of Significance

Applicable National Register Criteria

(Mark "x" in one or more boxes for the criteria qualifying the property for National Register listing.)

- A** Property is associated with events that have made a significant contribution to the broad patterns of our history.
- B** Property is associated with the lives of persons significant in our past.
- C** Property embodies the distinctive characteristics of a type, period, or method of construction or represents the work of a master, or possesses high artistic values, or represents a significant and distinguishable entity whose components lack individual distinction.
- D** Property has yielded, or is likely to yield, information important in prehistory or history.

Criteria Considerations

(Mark "x" in all the boxes that apply.)

Property is:

- A** Owned by religious institution or used for religious purposes.
- B** removed from its original location.
- C** a birthplace or grave.
- D** a cemetery.
- E** a reconstructed building, object, or structure.
- F** a commemorative property.
- G** less than 50 years of age or achieved significance within the past 50 years.

Narrative Statement of Significance

(Explain the significance of the property on one or more continuation sheets.)

9. Major Bibliographical References

(Cite the books, articles, and other sources used in preparing this form on one or more continuation sheets.)

Previous documentation on file (NPS):

- preliminary determination of individual listing (36 CFR 67) has been requested
- previously listed in the National Register
- previously determined eligible by the National Register
- designated a National Historic Landmark
- recorded by Historic American Buildings Survey # _____
- recorded by Historic American Engineering Record # _____

Areas of Significance

(Enter categories from instructions)

- ARCHITECTURE
- SOCIAL HISTORY
- COMMUNITY DEVELOPMENT AND PLANNING

Period of Significance

1901 - 1946

Significant Dates

1901 - 1904, 1911

Significant Person

(Complete if Criterion B is marked above)

Henry Huttleston Rogers

Cultural Affiliation

N/A

Architect/Builder

Charles Brigham

Primary location of additional data:

- State Historic Preservation Office
- Other State agency
- Federal agency
- Local government
- University
- Other

Name of repository:

Massachusetts Historical Commission

Unitarian Memorial Church
Name of Property

Bristol County, Massachusetts
County and State

10. Geographical Data

Acreage of Property 1.94 acres

UTM References See continuation sheet.

(Place additional UTM references on a continuation sheet)

1. 19	341520	4610630	3.		
Zone	Easting	Northing	Zone	Easting	Northing
2.			4.		
Zone	Easting	Northing	Zone	Easting	Northing

 See continuation sheet

Verbal Boundary Description

(Describe the boundaries of the property on a continuation sheet.)

Boundary Justification

(Explain why the boundaries were selected on a continuation sheet.)

11. Form Prepared By

name/title Roger G. Reed, Preservation Consultant, with Betsy Friedberg, National Register Director, MHC

organization Massachusetts Historical Commission date September 1996

street & number 220 Morrissey Boulevard telephone (617) 727-8470

city or town Boston state MA zip code 02125

Additional Documentation

Submit the following items with the completed form:

Continuation Sheets

Maps

- A **USGS map** (7.5 or 15 minute series) indicating the property's location.
- A **sketch map** for historic districts and properties having large acreage or numerous resources.

Photographs

Representative **black and white photographs** of the property.

Additional items (Check with the SHPO or FPO for any additional items)

Property Owner

(Complete this item at the request of the SHPO or FPO.)

name _____

street & number _____ telephone _____

city or town _____ state _____ zip code _____

Paperwork Reduction Act Statement: This information is being collected for applications to the National Register of Historic Places to nominate properties for listing or determine eligibility for listing, to list properties, and to amend existing listings. Response to this request is required to obtain a benefit in accordance with the National Historic Preservation Act, as amended (16 U.S.C. 470 et seq.).

Estimated Burden Statement: Public reporting burden for this form is estimated to average 18.1 hours per response including the time for reviewing instructions, gathering and maintaining data, and completing and reviewing the form. Direct comments regarding this burden estimate or any aspect of this form to the Chief, Administrative Services Division, National Park Service, P.O. Box 37127, Washington, DC 20013-7127; and the Office of Management and Budget, Paperwork Reductions Project (1024-0018), Washington, DC 20503.

United States Department of the Interior
National Park Service

National Register of Historic Places Continuation Sheet

Section number 7 Page 1

Unitarian Memorial Church
Fairhaven (Bristol County), Massachusetts

7. DESCRIPTION

Occupying a landscaped two-acre square bounded by four streets in the center of Fairhaven are the Unitarian Memorial Church, Parish House, and former parsonage (now Harrop Center), a complex of masonry structures inspired by the medieval architecture of England. The buildings are sited on the east half of the square, which is landscaped with grass, scattered trees, and granolithic walks leading to the various entrances into the buildings. Defining the boundaries of the square are quarter-round granite curbstones and brick sidewalks. The square is bounded by Centre, Walnut, Union and Green streets. Facing the square are wood-frame, single-family homes dating from the late 19th and early 20th centuries. Within a block of the church on a side street are the library and town hall, two masonry structures designed by the same architect as the church. Thus, the style and siting of the nominated property calls to mind the relationship between a great European cathedral dominating a small medieval town.

Two of the structures, the church and parish house, are linked by a cloister and are in the Decorated style of Gothic architecture. The church sanctuary is two stories and runs east to west, with a corner tower at the northeast end. An entrance porch is on the opposite south east corner. Extending from the north side of the tower is a cloister that leads to the parish house, also a two-story building. The latter is perpendicular to the sanctuary with its principal facade facing east. Behind this building is the third contributing structure, the former parsonage, a T-shaped building of 2 1/2 stories.

Unitarian Memorial Church

As the focal point of the entire complex, the sanctuary and tower is the most dominant building on the property. Constructed of brick bearing walls and faced with ashlar granite obtained from a local quarry, it is two stories high with a gable roof of standing seam copper. All of the carved stone ornament is Indiana limestone. The nave extends 115 feet and is flanked by one story ambulatories. Each ambulatory is divided into five bays by buttresses. These buttresses extend up to the clerestory in non-structural flying buttresses. The east end of the nave features a large ogee arched window with Gothic tracery and stained glass windows. This window is framed by buttresses which, like those on the sides, have pinnacles richly ornamented with carved stone crockets.

The east elevation, which is the principal facade of the sanctuary, includes the 156-foot-high bell tower. This tower has small windows at the first, second, and third stages and lacks extensive ornamentation below the open belfry at the fifth stage. The belfry has lancet-arched apertures and is also embellished with tracery, crockets, and finials. There are carved stone animals, birds, and foliage on the cornice and the stops for the label moldings.

(continued)

United States Department of the Interior
National Park Service

National Register of Historic Places Continuation Sheet

Section number 7 Page 2

Unitarian Memorial Church
Fairhaven (Bristol County), Massachusetts

The roof of the tower has a pierced balustrade consisting of crenelation and trefoils. At three corners are pinnacles embellished with crockets. The engaged stairtower occupies the northeast corner, and it has a small lantern, which extends higher than the three pinnacles on the other corners. This lantern is polygonal rather than square and includes unfilled niches at each angle. There is little ornamentation on the body of the tower except for two beltcourses with carved stone panels and buttresses ornamented with gables.

The principal entrance to the sanctuary is through the south porch. This is the most richly ornamented feature of the exterior of the church and includes a portal with large paneled doors with carved wood figures. The stone buttresses at each corner have niches containing limestone figures sheltered by an elaborate carved limestone canopy.

A second major entrance to the sanctuary is gained through the west end facing the rear of the complex. This elevation also supports a large ogee-arched window with tracery that is ornamented with decorative stone crockets and a finial. This window is framed by small towers in the form of buttresses capped with pinnacles, and niches ornamented with crockets. Below the window is an entrance vestibule with a crenelated parapet consisting of carved Gothic panels. The doorway also features ogee-arched stone trim ornamented with crockets.

The interior of the sanctuary is no less ornate than the exterior. All of the walls are faced with limestone. The nave extends into a choir at the west end of the sanctuary, where there is a massive Gothic arch framing the stained glass window. On either side of the nave are smaller Gothic arches below clerestory windows, which also have stained glass and tracery. The ceiling is supported on a series of wood trusses, each having elaborate Gothic carving and a large six-foot wood angel. Directly above is a tie beam ceiling.

Intricately carved wood paneling is also used for two organ cases flanking the altar, and for the octagonal pulpit, which is oak. The remainder of the Gothic ornament, including the ceilings to the ambulatories, are limestone with stellar ribs. Of particular note is the baptistery, which is marble and surmounted by a carved oak canopy. Directly above is a limestone ceiling in a Gothic fan design. The floors, pulpit base, and platform are marble, and there are thirty-two pews with backs and ends decorated with carved ornament.

Similar Gothic ornament is found on the cloister linking the sanctuary to the Parish House. An outstanding feature here is the bronze double gates, intricately fashioned into Gothic motifs. The roof of the walkway is flat, with the paneled crenelation and finials with crockets found elsewhere on the church. Inside the cloister are carved stone corbel heads.

(continued)

United States Department of the Interior
National Park Service

National Register of Historic Places Continuation Sheet

Section number 7 Page 3

Unitarian Memorial Church
Fairhaven (Bristol County), Massachusetts

Parish House

Like the church, the Parish House is of brick construction with limestone trim on the exterior. This structure has a long gable roof covered with red slate, which runs north to south. Paired gable end wings project from each side. On the east side, these gable ends terminate in polygonal bay windows. Between these wings, in the center of the elevation, is an entrance vestibule with an ogee-arched doorway and oak doors. The two gable ends on the reverse, or west, side flank a wooden porch under a shed roof. The windows on the Parish House are square headed, with limestone Gothic hood moldings in the upper floor of each gable end. The principal decorative elements are the chimneys, which have very ornate terracotta pots, and the pinnacles at the bottom of each raking cornice. At the exterior corners of the roof, these pinnacles are larger than on the gable ends and are capped with lanterns having ogee roofs.

The interior of the Parish House features plaster walls and oak floors, and includes major decorative spaces in the auditorium and the dining hall. The large auditorium has a ceiling with wood trusses that are molded and terminate in pendants. These trusses also have angel heads carved into the beam ends. The panels in the tie beam ceiling are canvas and have stencil borders in a Gothic design on a plain background. At one end is a stage framed by a proscenium arch surmounted by a Gothic arch filled with a painting illustrating Psalm 150. The dining hall has a coved ceiling, which also has molded wood paneling embellished with painted Gothic borders. On one wall is a limestone fireplace with a massive stone mantel supporting two carved stone medieval figures. This room has allegorical designs painted on panels midway up the wall.

The Parsonage (Harrop Center)

The Parsonage (now the Harrop Center) was built as a residence and was inspired by English Tudor domestic architecture. The granite first story matches the church and Parish House, but the upper story and a half is faced with stucco and wood half timbering with an overhang in a manner characteristic of medieval residential architecture. There are five gable ends and three dormers, each with decorative vergeboard and finials. The roof is red slate and the chimneys have ornamented terracotta chimney pots like those on the Parish House. The windows are all diamond paned and in a variety of sizes consisting of large single units, or groups of twos, threes, or fours divided by mullions. The windows have limestone surrounds, except for the bay windows, which are constructed entirely of that material. An open porch recessed beneath the gable end on the northeast corner is entered through an ogee-arched opening to the main entrance. At the rear, or southwest, corner of the house is a polygonal porch supported on wood posts, with balustrades on the roof and deck. The deck balustrade has neo-classical turned balusters, an alteration from the original pierced Gothic design for the railing. The interior of the building includes an entrance hall with carved Tudor-style woodwork.

(continued)

United States Department of the Interior
National Park Service

National Register of Historic Places Continuation Sheet

Section number 7 Page 4

Unitarian Memorial Church
Fairhaven (Bristol County), Massachusetts

Alterations

There are no significant alterations to the buildings in this complex.

Archaeological Description

While no prehistoric sites are currently recorded on the church property or in the general area, sites may be present. The church is located in close proximity to New Bedford Harbor and Buzzards Bay, both estuarine environments originally containing numerous resource types exploited by Native Americans. In general, however, the locational characteristics of the nominated property, particularly its distance of over 1000' from wetlands, are not favorable for prehistoric site locations. Given the above information, the generally urban context of the area, construction of the four nineteenth century homes which predate the church and the church complex itself, the potential for significant prehistoric survivals is low. The potential for historic archaeological resources on the church property may range from moderate to high depending on the extent of impacts from church construction. Archaeological resources consisting of structural remains and occupational related features (trash areas, wells, privies) may survive from four mid 19th century homes and outbuildings which were cleared from the property in 1901 prior to church construction. It is unknown at present to what extent these resources were demolished and, the effects construction of the Sanctuary, Parish House and Harrop Center had on any surviving resources.

(END)

United States Department of the Interior
National Park ServiceNational Register of Historic Places
Continuation SheetSection number 8 Page 1Unitarian Memorial Church
Fairhaven (Bristol County), Massachusetts**8. STATEMENT OF SIGNIFICANCE**

The Unitarian Memorial Church property in Fairhaven, a small town on Buzzards Bay in Bristol County, Massachusetts, forms one of the great masterpieces of early 20th century Gothic Revival architecture in the state. The church, with its attached parish house, and the former parsonage (Harrop Center) are a major commission of an important Boston architect, Charles Brigham. The complex survives in excellent condition and with remarkably little alteration since its completion in 1904. Representing exceptional skills in architecture, art, and craftsmanship, the Unitarian Memorial Church and Harrop Center are eligible for listing in the National Register under criterion C. The property is also eligible under criterion B, based on its association with the donor, Henry Huttleston Rogers, whose contributions to Fairhaven included a number of major public buildings.

No small town in Massachusetts has benefited more from one man donating so many major architectural monuments than has Fairhaven. The Unitarian Memorial Church is the largest and most ornate among several prominent building projects donated by Henry Huttleston Rogers, a Fairhaven native who had become a leading executive at Standard Oil Company. When Henry Rogers was born in 1840, the town of Fairhaven was a village of under 5,000 located on the Acushnet River opposite the more prosperous city of New Bedford. During Rogers' youth Fairhaven's economy was based primarily upon shipbuilding, farming and fishing, and afforded few opportunities for a person of exceptional entrepreneurial drive. He left town for the west in 1860, settling in the Pennsylvania oilfields at the time when John D. Rockefeller was beginning his career there. With an apparent natural aptitude for inventiveness, Henry Rogers developed several improvements in the method of oil refining, the most important of which was his process to separate naphtha from crude, patented in 1871. This brought him into contact with Rockefeller during the early years of the founding of Standard Oil, which was organized in 1874. Rogers' skills were not just scientific, as he was equal to his contemporaries in his abilities as an organizer and an aggressive, speculative capitalist. His positions as a trustee of the Standard Oil Trust between 1885-1892, and a director from 1899-1909, merely suggest the extent of his involvement in what became the largest trust company in America. He was also heavily involved in the copper and natural gas industries, and in 1901 became a director of U.S. Steel Corporation. By the time of his death in 1909, Henry Rogers was one of the leading capitalists in the country. Unlike the cantankerous J.P. Morgan, or the aloof John D. Rockefeller, all accounts testify that Rogers was a man of great charm and warmth when he was not engaged in moneymaking ventures, and this explains the close contacts he maintained with his former townsmen throughout his life.

Rogers had been absent from Fairhaven for twenty-five years before he made his first major contribution to his native town, the Rogers Grammar School of 1885. This was followed by the Millicent Library (1891-92-NR), the Town Hall (1893-94-NR), a Masonic lodge and commercial block (1901), remodeling the old Unitarian church for a school (1901), the new Unitarian Church (1901-04), the Tabitha Inn (1905-06), and the High School (1906-NR). In addition, he was

(continued)

United States Department of the Interior
National Park Service

National Register of Historic Places Continuation Sheet

Section number 8 Page 2

Unitarian Memorial Church
Fairhaven (Bristol County), Massachusetts

responsible for the Fairhaven Water Works (1893), laying out several streets and sidewalks (1895+), subsidizing a new factory for the Atlas Tool Co. (1902), and filling in the millpond for Cushman Park (1903). Also, he built a family mausoleum in 1889 and a large summer home in 1895.

The most prominent of these building projects were designed by Charles Brigham (1841-1925), a Boston architect whom Rogers consistently favored for his Fairhaven projects. Charles Brigham was born in Watertown, Mass., a year after Henry Rogers. He was educated in local schools and apprenticed under an architect named Calvin Ryder. He then worked as draftsman under Gridley J.F. Bryant, who is often credited with having the largest firm in New England at the middle of the 19th century. After service in the Civil War, Brigham joined the office of John Hubbard Sturgis. In 1866 the two men formed a twenty-year partnership, Sturgis & Brigham, which lasted until the senior man's death in 1886. Among the major projects by this firm were the first Museum of Fine Arts, Boston, begun in 1872, and the Church of the Advent at the foot of Beacon Hill, begun in 1876. In 1889 Brigham and his partner at the time, John C. Spofford, were chosen to design the west wing of the Massachusetts State House. It was at this point in his career that he designed the library in Fairhaven for Henry Rogers.

Brigham's design for the Millicent Library is a granite building in the Richardson Romanesque style and is exceptionally picturesque in character. In contrast the next project, the town hall, employed XIII century French Gothic motifs. This building sets the stage for the Unitarian Church, an English Gothic design in the Decorated style. During its construction between 1901-04 Brigham employed two men who would become his partners. Charles C. Coveney (1874-1945) was born in Brookline and worked for Brigham as a draftsman before taking time to study in Europe. He can be credited with an important role in the design of the Memorial Church as ecclesiastical architecture was a specialization throughout his career. Less is known about Henry V. Bisbee(?-?), who was a Fairhaven native and apparently worked in the office as a construction supervisor. A major project which followed the church in Fairhaven was the First Church of Christ, Scientist (NR-), in Boston, begun in 1904 and finished in 1906 by the newly established firm of Brigham, Coveney & Bisbee.

The death of Henry Rogers' mother in 1899 led to his plans to build a new Unitarian church as her memorial. Land was purchased and four houses were cleared from the site in 1901. The cornerstone ceremony was August 9, 1901, with Samuel Clemens (Mark Twain) as the principal speaker. He was a close friend of Henry Rogers and had already spoken at the cornerstone ceremonies for the town hall. The parish hall was completed first and dedicated on January 6, 1903. On October 4, 1904, the church was dedicated, although work probably continued on the interior. The entire cost was borne by Henry Rogers.

In addition to the architects, the names of some of the artists and craftsmen have been identified. The twenty stained glass windows were designed and executed over a five-year period by Robert Reid (1863-1920), a prominent muralist and portrait artist. Reid had studied and exhibited in France before

(continued)

United States Department of the Interior
National Park ServiceNational Register of Historic Places
Continuation SheetSection number 8 Page 3Unitarian Memorial Church
Fairhaven (Bristol County), Massachusetts

settling in New York City. Important public projects by this artist included murals in the main building of the Columbia Exposition in Chicago, the Library of Congress building in Washington, D.C., and in the west wing of the Massachusetts State House. In the latter project he would have worked closely with Charles Brigham. In addition to the stained glass windows, Reid painted "the Adoration of the Magi" in the Fairhaven Church, and may have been responsible for other artwork in the complex. Another artist, Charles Mills of Dedham, painted the mural representing Psalm 150 in the Parish House. The stone, bronze, and wood carvings were executed by the firm of John Evans & Co. of Boston. According to a 1971 newspaper article, much of the actual wood carving was done by two German-born Cambridge craftsmen, John Kirchmayer and Adelbert Zwink. These men, who were half brothers, brought to the project the traditions of wood carvings in their native Bavaria. They also provided the models for the bronze castings, Mr. Kirchmayer having been responsible for the doors to the sanctuary. The overall decorating for the interior of the Parish House was by A.B. Cutter Co. of Boston. L.D. Wilcut & Son, also of Boston, served as general contractor for all three structures. No landscape architect has been identified, although the name of Sullivan, a local landscaping firm, survives in the church records.

The Rogers family continued to provide some support to the church after its completion, starting with the memorial tablet to Henry Rogers designed by Brigham, Coveney & Bisbee in 1911. Descendants of Henry Rogers still attend annual family memorial gatherings at the church. The burden of the support, however, falls upon the small Unitarian Congregation. (Organized in 1819, this congregation had originally built a traditional wood meetinghouse. Constructed in 1832 and called the Washington Street Christian Church, it is located at 32 Washington Street. When construction on the new church was begun, Rogers had the old building converted for use as a school by Brigham's firm. In 1944 it was much altered for a boy's club, and in 1984 it became the Fairhaven Activity Center.) Due to the munificence of one extraordinary individual, the Unitarians of Fairhaven have the responsibility to maintain one of the most architecturally magnificent churches in the Commonwealth.

Archaeological Significance

Historic archaeological resources described above have the potential to provide detailed information on mid to late 19th century residential life in Fairhaven during a period in which the town grew from a village opposite the city of New Bedford to a more urban community. Structural remains from pre-existing residences (4) can provide specific details on the homes which were demolished prior to construction of the church. Detailed analysis of occupational related features can also provide information on the residents of the homes and the community at large during the time the homes were extant.

(END)

United States Department of the Interior
National Park Service

National Register of Historic Places Continuation Sheet

Section number 9 Page 1

Unitarian Memorial Church
Fairhaven (Bristol County), Massachusetts

9. MAJOR BIBLIOGRAPHICAL REFERENCES

Adams, Oscar Fay, "A New England Architect and His Work", New England Magazine, Vol. 36, June, 1907, No. 4, pp. 432-48.

Fairhaven Star, January 10, 1903, p. 1; August 1, 1903, p.4; December 19, 1903, p.3; October 8, 1904, p. 4; October 15, 1904, p. 1.

Hildy, Ralph and Muriel, Pioneering in Big Business 1882-1911, A History of Standard Oil Co. N.Y., 1955.

Mosgrove, Mildred C., "America's Cathedral Beautiful," 1940, revised by Amy L. Young, 1968, privately printed by the Memorial Church, Fairhaven.

Mosgrove, Mildred, C., "The Memorial Church," 1906, 1960, unpublished manuscript, Unitarian Society of Fairhaven.

New York Times, obituary for Charles C. Coveney, December 21, 1945, p. 21.

Reeves, Dana G., "Fourth Generation, a digressive history of a building in Fairhaven, Mass.," undated manuscript, circa 1984.

"Reid, Robert," Dictionary of American Biography, Vol. 15, N.Y., 1935, pp.479-80.

"Rogers, Henry H.," ibid, Vol. 16, pp.93-96.

The Sunday Standard-Times (New Bedford), "Tribute to a disappearing craft," August 22, 1971, pp.4-5.

Thomas, Joseph D., editor, A Picture History of Fairhaven, Spinner Publications, 1988.

Tripp, Job, "History of the Unitarian Church of Fairhaven," 1882, 1906, unpublished manuscript, Unitarian Society of Fairhaven.

(END)

United States Department of the Interior
National Park Service

National Register of Historic Places Continuation Sheet

Section number 10 Page 1

Unitarian Memorial Church
Fairhaven (Bristol County), Massachusetts

10. GEOGRAPHICAL DATA

Verbal Boundary Description

The boundary of the nominated property is shown as lot 46 on the accompanying detail of the Fairhaven Assessor's map sheet #386. This is the property described in deeds filed with the Bristol County Registry of Deeds, Book 1944, add. 1937. The total lot area is 1.94 acres

Boundary Justification

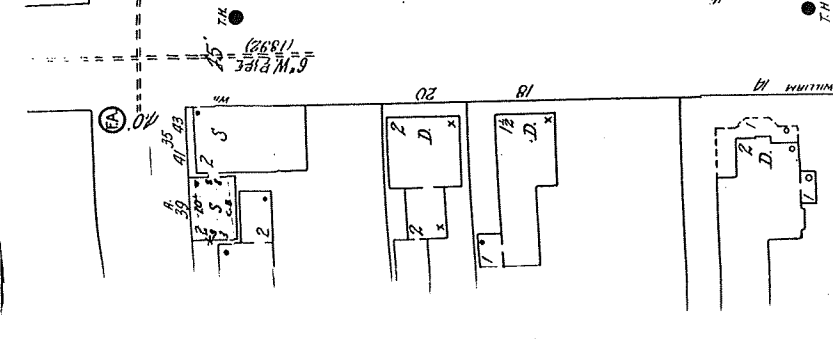
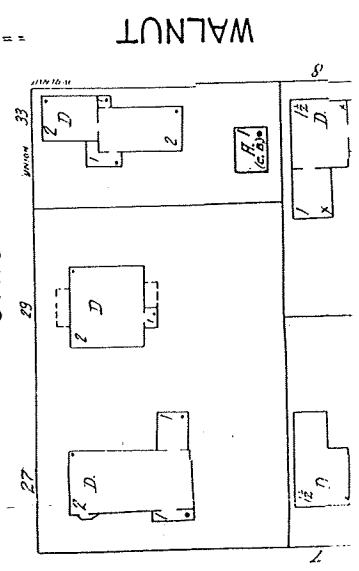
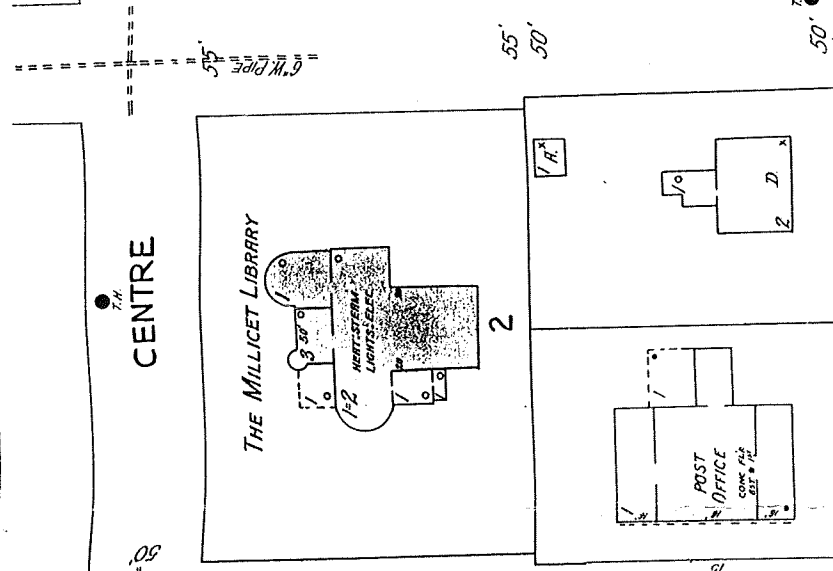
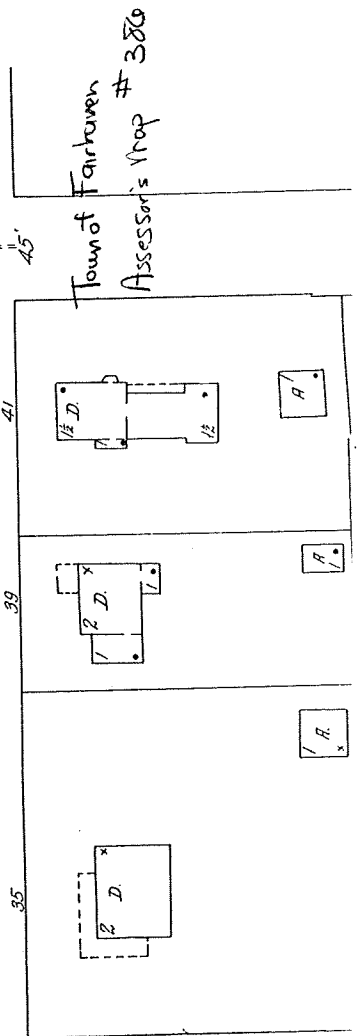
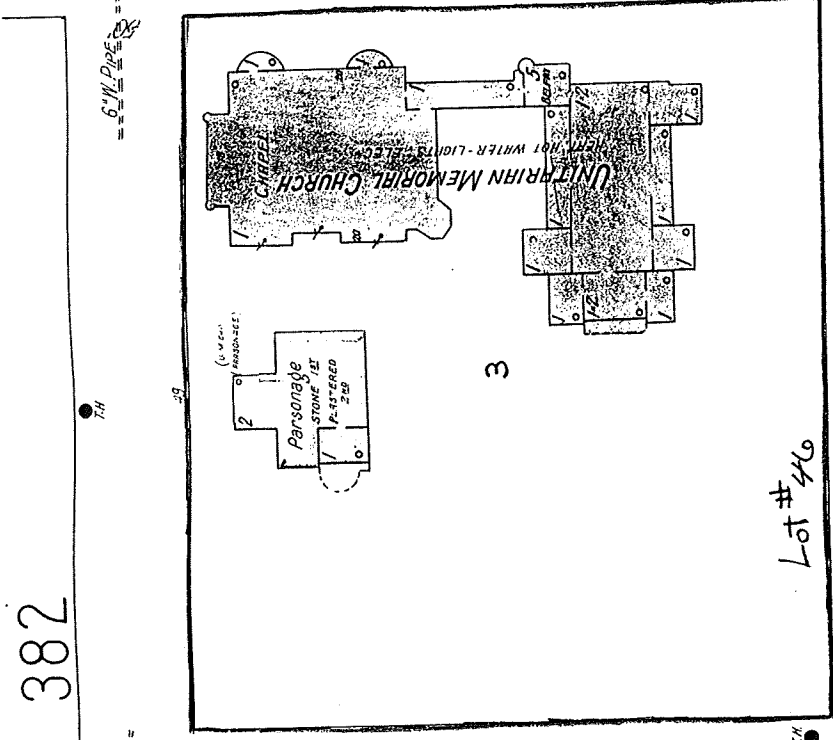
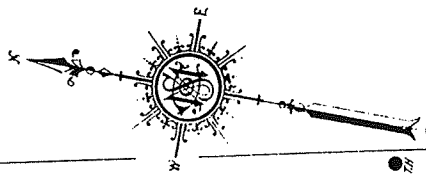
The boundary includes the entire parcel of land belonging to the Unitarian Society of Fairhaven. It includes the church, parish house, and former rectory constructed in 1901-1904, and the entire parcel of land originally donated with the church and bounded by Green, Centre, Union, and Walnut streets.

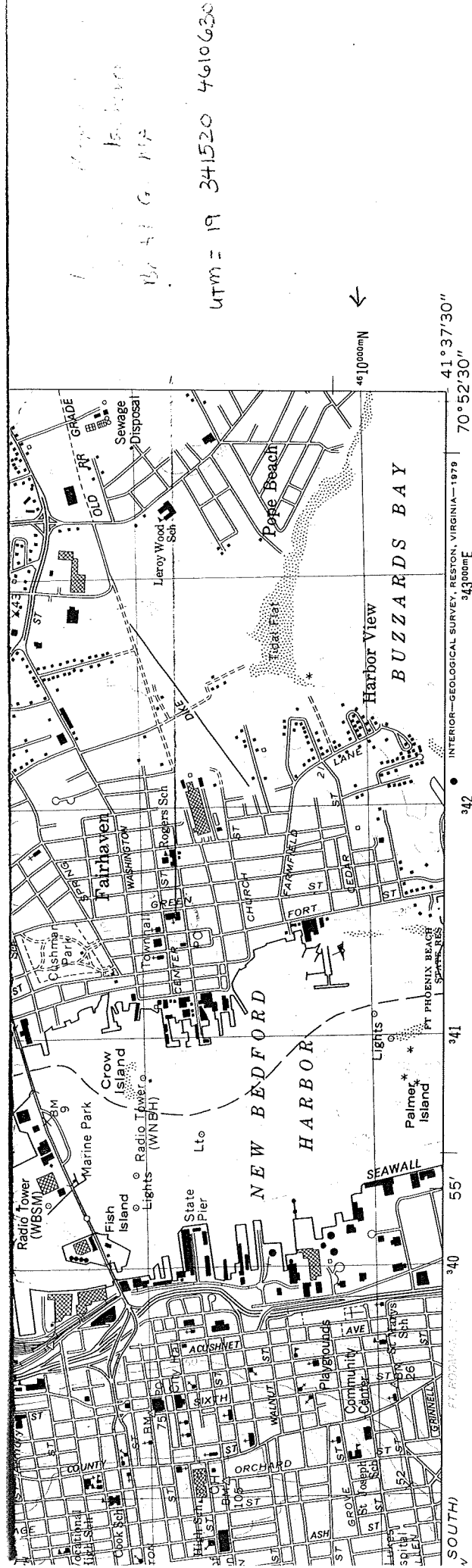
(END)

386

(102)

FAIRHAVEN



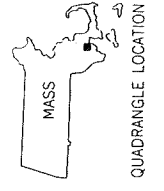


15.000
 10 41 G 112
 UTM = 19 341520 4610620

45° 10' 00" N
 41° 37' 30"
 70° 52' 30"
 343000m E
 INTERIOR—GEOLOGICAL SURVEY, RESTON, VIRGINIA—1979
 (SCOUTIC NECK)
 6867 III SE

ROAD CLASSIFICATION

Primary highway hard surface	Light-duty road, hard or improved surface
Secondary highway, hard surface	Unimproved road
Interstate Route	U. S. Route
	State Route



1 MILE
 4000 5000 6000 7000 FEET
 1 KILOMETER
 10 20 30 FEET

ET—DATUM IS MEAN LOW WATER
 OXIMATE LINE OF MEAN HIGH WATER
 APPROXIMATELY 3.7 FEET

NEW BEDFORD NORTH, MASS.
 N4137.5—W7052.5/7.5

1979

DMA 6867 III NW—SERIES V814

VAL MAP ACCURACY STANDARDS
 URVEY, RESTON, VIRGINIA 22092
 AND SYMBOLS IS AVAILABLE ON REQUEST



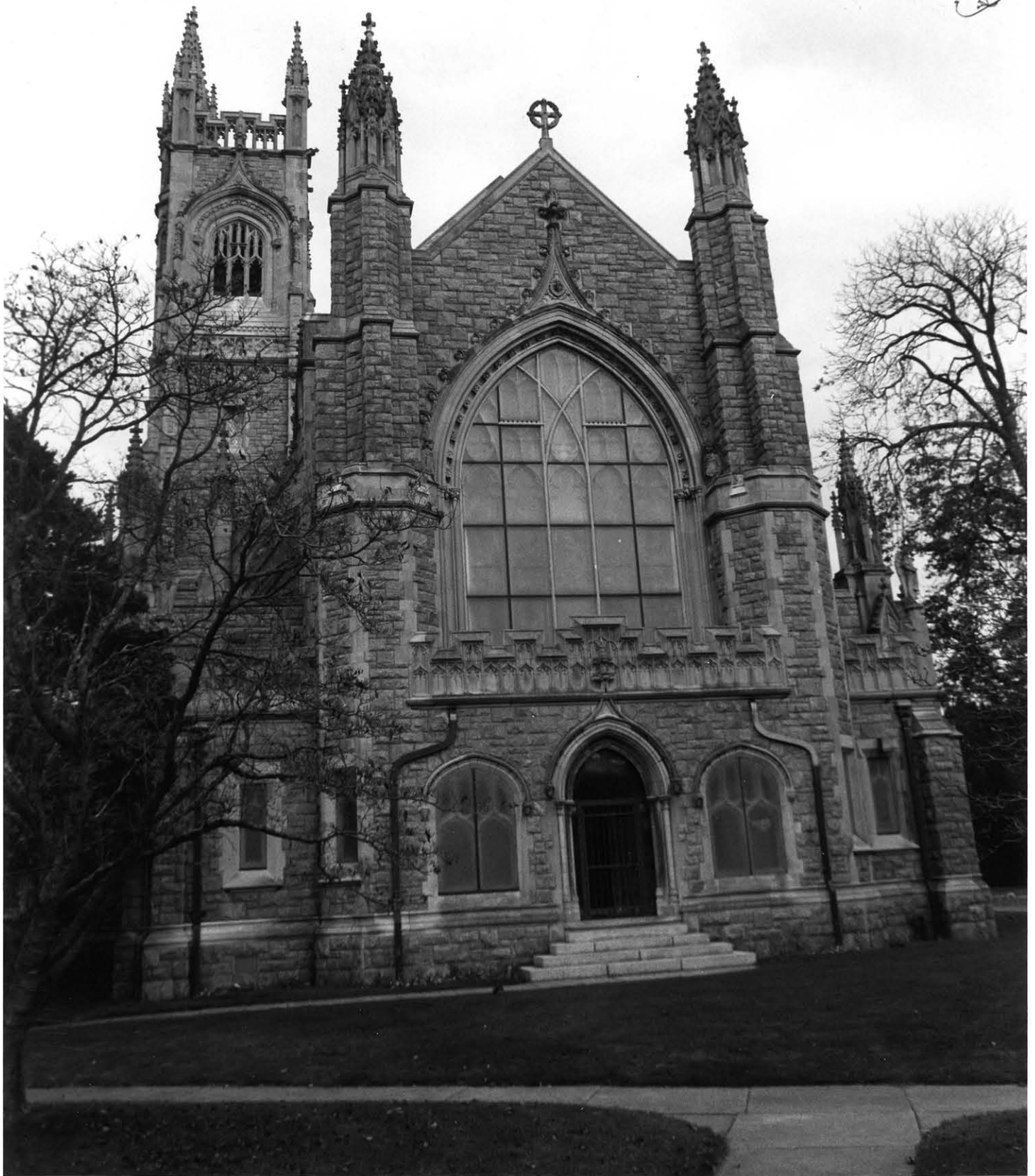
1. Church from southeast. (Photograph: Willoughby Elliott, May 1995)



2. Tower from northeast. (Photograph: Willoughby Elliott, May 1995)



3. Doors to sanctuary, south elevation. (Photograph: Willoughby Elliott, May 1995)



4. Sanctuary, west elevation. (Photograph: Willoughby Elliott, May 1995)



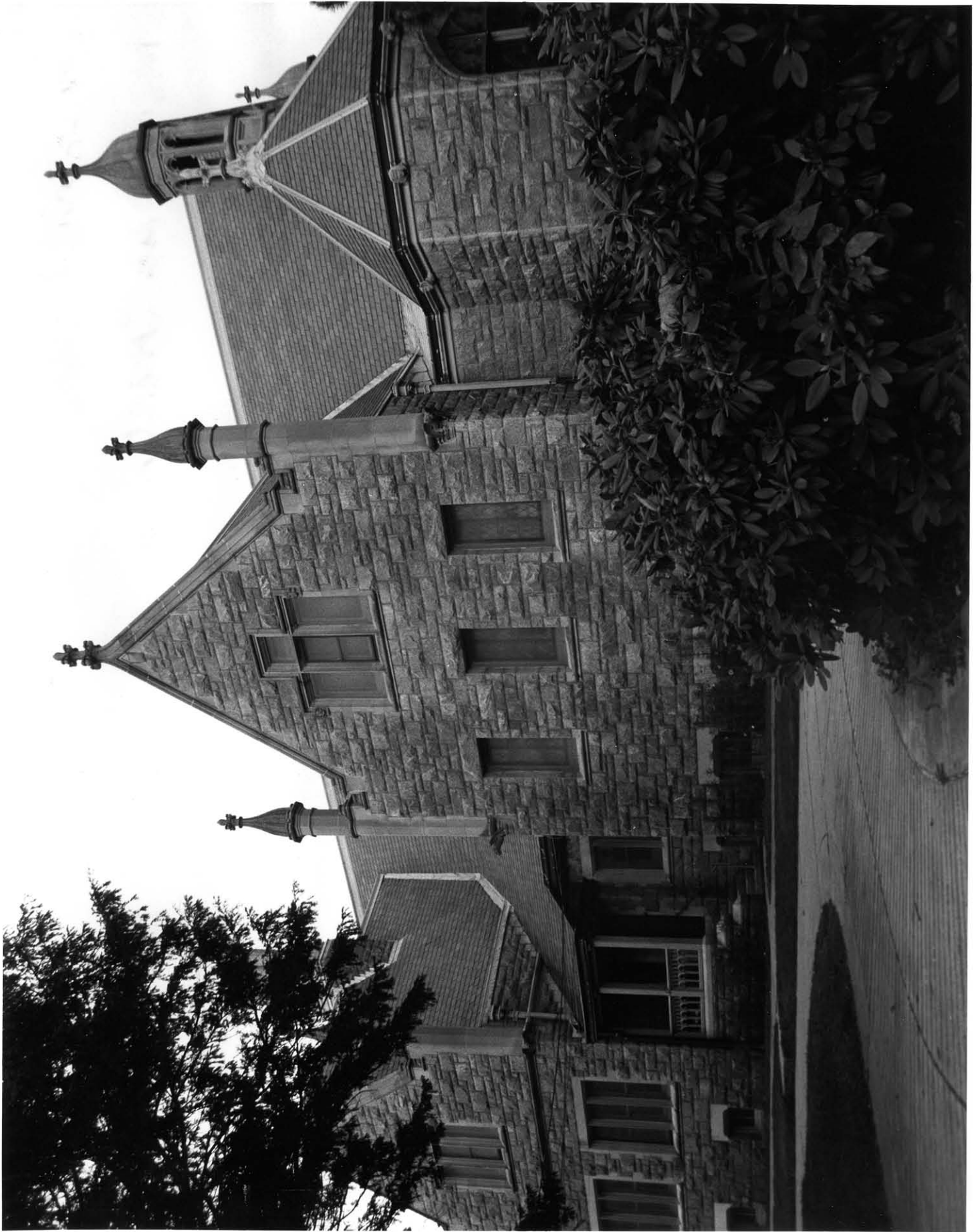
5. Church complex from northeast. (Photograph: Willoughby Elliott, May 1995)



6. Parish House, east elevation. (Photograph: Willoughby Elliott, May 1995)



7. Parish House, from northwest. (Photograph: Willoughby Elliott, May 1995)



8. Parish House, west elevation. (Photograph: Willoughby Elliott, May 1995)



9. Parsonage (Harrop Center), from northeast. (Photograph: Willoughby Elliott, May 1995)

NATIONAL REGISTER OF HISTORIC PRESERVATION CERTIFICATE (1996)

THIS PAGE INTENTIONALLY LEFT BLANK.



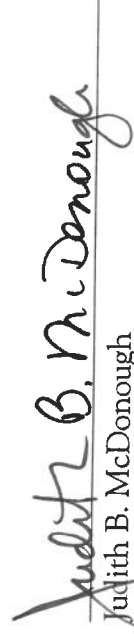
*Rogers Memorial Church, 102 Green Street
Fairhaven, Massachusetts*

was accepted on *November 22, 1996* for inclusion in the

National Register of Historic Places

The National Register is the nation's official list of buildings, districts, sites, structures, and objects which retain their historical character and are important to our local, state, or national history. The National Register was established under the National Historic Preservation Act of 1966 and is administered in the Commonwealth by the Massachusetts Historical Commission.


William Francis Galvin
Secretary of the Commonwealth
Chairman, Massachusetts Historical Commission


Judith B. McDonough
State Historic Preservation Officer
Executive Director, Massachusetts Historical Commission

MASSACHUSETTS HISTORICAL COMMISSION
A Division of the Secretary of the Commonwealth

THIS PAGE INTENTIONALLY LEFT BLANK.

MACRIS LISTING (2019)



Massachusetts Cultural Resource Information System

Scanned Record Cover Page

RCH
setts

Inventory No:	FAI.96
Historic Name:	Rogers Memorial Church
Common Name:	Unitarian Memorial Church
Address:	102 Green St
City/Town:	Fairhaven
Village/Neighborhood:	Fairhaven
Local No:	
Year Constructed:	r 1902
Architect(s):	Bisbee, Henry V.; Brigham, Charles A.; Coveney, Charles Carden; Evans, John; Kirchmayer, Johannes; Mills, Charles; Reid, Robert; Sullivan; Willcutt, Lyman D. and Sons; Zwink, Adelbert
Architectural Style(s):	Neo Gothic Revival
Use(s):	Church
Significance:	Architecture; Art; Religion
Area(s):	FAI.D: Unitarian Memorial Church
Designation(s):	Nat'l Register Individual Property (11/22/1996)
Building Materials(s):	Roof: Copper Wall: Brick; Coursed Ashlar; Glass; Granite; Limestone; Stone, Cut Foundation: Granite



The Massachusetts Historical Commission (MHC) has converted this paper record to digital format as part of ongoing projects to scan records of the Inventory of Historic Assets of the Commonwealth and National Register of Historic Places nominations for Massachusetts. Efforts are ongoing and not all inventory or National Register records related to this resource may be available in digital format at this time.

The MACRIS database and scanned files are highly dynamic; new information is added daily and both database records and related scanned files may be updated as new information is incorporated into MHC files. Users should note that there may be a considerable lag time between the receipt of new or updated records by MHC and the appearance of related information in MACRIS. Users should also note that not all source materials for the MACRIS database are made available as scanned images. Users may consult the records, files and maps available in MHC's public research area at its offices at the State Archives Building, 220 Morrissey Boulevard, Boston, open M-F, 9-5.

Users of this digital material acknowledge that they have read and understood the MACRIS Information and Disclaimer (<http://mhc-macris.net/macrisdisclaimer.htm>)

Data available via the MACRIS web interface, and associated scanned files are for information purposes only. THE ACT OF CHECKING THIS DATABASE AND ASSOCIATED SCANNED FILES DOES NOT SUBSTITUTE FOR COMPLIANCE WITH APPLICABLE LOCAL, STATE OR FEDERAL LAWS AND REGULATIONS. IF YOU ARE REPRESENTING A DEVELOPER AND/OR A PROPOSED PROJECT THAT WILL REQUIRE A PERMIT, LICENSE OR FUNDING FROM ANY STATE OR FEDERAL AGENCY YOU MUST SUBMIT A PROJECT NOTIFICATION FORM TO MHC FOR MHC'S REVIEW AND COMMENT. You can obtain a copy of a PNF through the MHC web site (www.sec.state.ma.us/mhc) under the subject heading "MHC Forms."

Commonwealth of Massachusetts
Massachusetts Historical Commission

Spencer, Sullivan & Vogt • 19220 Morrissey Boulevard, Boston, Massachusetts 02125

www.sec.state.ma.us/mhc

225

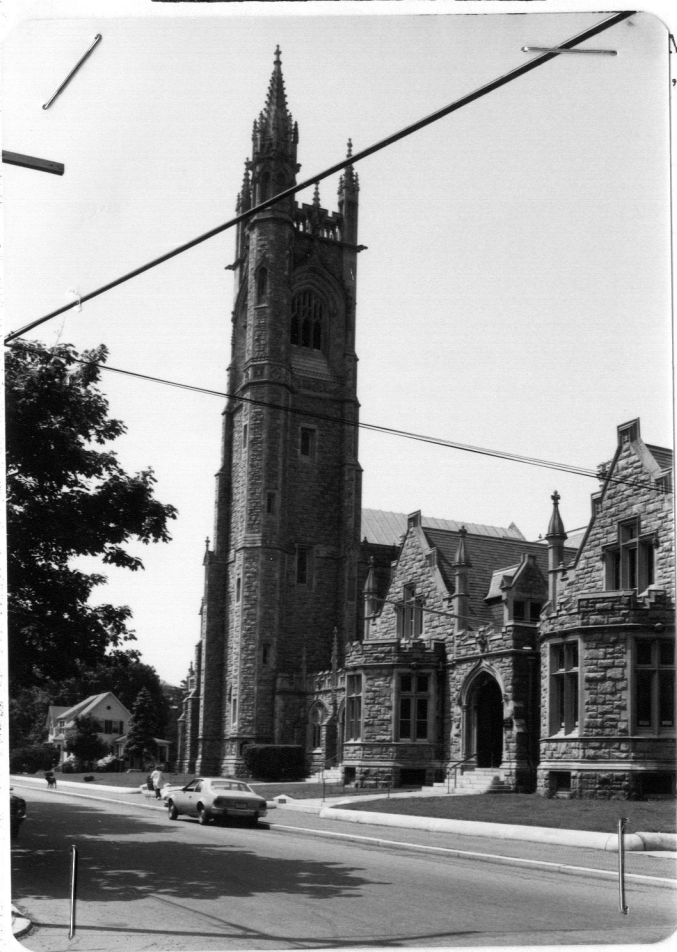
FAI. 96

FORM B - BUILDING

In Area no.	Form no.
	96

COMMISSION
Boston

Pl - Fairhaven



1. Town Fairhaven

Address Green Street, corner Union

Name Memorial Church

Present use church

Present owner _____

3. Description: Large masonry church w/gable roofed nave & 165' tall square tower w/corner turret terminating in pinnacles.

Date 1901-04

Source Am. Arch. & Bldg. News

Style English Perpendicular Gothic

Architect Charles Brigham

Exterior wall fabric "Love Rock" limestone

Outbuildings (describe) none (parish hs & parsonage)

Other features Rock-faced random ashlar walls with corners & openings trimmed w/smooth limestone

Altered no Date _____

Moved _____ Date _____

5. Lot size:
One acre or less X Over one acre _____

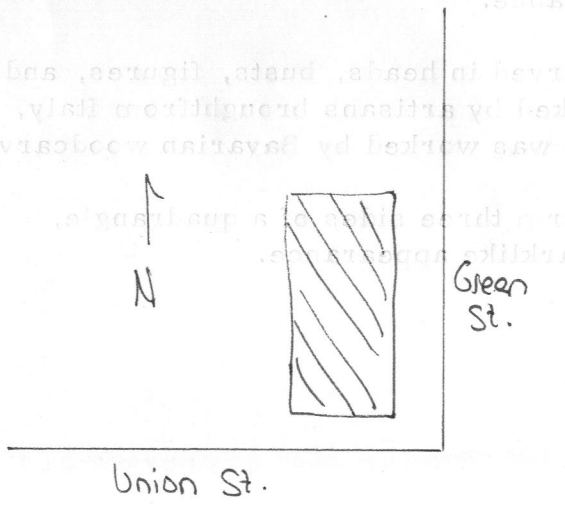
Approximate frontage Church 53' x 100'

Approximate distance of building from street
at 25' from Green Street

6. Recorded by Ellen Fletcher Rosebrock

Organization The Preservation Partnership

Date January 1979



(over)

7. Original owner (if known) Unitarian Church

Original use church

Subsequent uses (if any) and dates same

8. Themes (check as many as applicable)

- | | | | | | |
|-----------------------|-------------------------------------|----------------------------|--------------------------|-------------------------|--------------------------|
| Aboriginal | <input type="checkbox"/> | Conservation | <input type="checkbox"/> | Recreation | <input type="checkbox"/> |
| Agricultural | <input type="checkbox"/> | Education | <input type="checkbox"/> | Religion | <input type="checkbox"/> |
| Architectural | <input checked="" type="checkbox"/> | Exploration/
settlement | <input type="checkbox"/> | Science/
invention | <input type="checkbox"/> |
| The Arts | <input type="checkbox"/> | Industry | <input type="checkbox"/> | Social/
humanitarian | <input type="checkbox"/> |
| Commerce | <input type="checkbox"/> | Military | <input type="checkbox"/> | Transportation | <input type="checkbox"/> |
| Communication | <input type="checkbox"/> | Political | <input type="checkbox"/> | | |
| Community development | <input type="checkbox"/> | | | | |

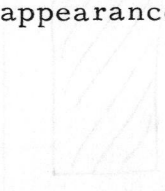
9. Historical significance (include explanation of themes checked above)

Charles Brigham designed this imposing granite church in the 15th century English Perpendicular Gothic style, and it was built between April, 1901 and October, 1904, at a cost reportedly in excess of one million dollars.

The granite used for the exterior walls is a warm-colored stone quarried from a ledge known as "Love Rock" on the Rogers Estate. The exterior trim is of blue Indiana limestone. Inside the church, the walls are a buff-colored Indiana limestone, and the floors are multi-colored marble imported variously from Tennessee, Italy, Switzerland, and France.

The exterior limestone trim, elaborately carved in heads, busts, figures, and other devices, is reported to have been worked by artisans brought from Italy, while the richly carved American oak inside was worked by Bavarian woodcarvers.

The church, parish house, and parsonage form three sides of a quadrangle, and the grounds west of the church have a parklike appearance.



10. Bibliography and/or references (such as local histories, deeds, assessor's records, early maps, etc.) American Architect & Bldg News. 87:1527, 1528. Mar. 25, 1905, April 1, 1905

Mildred C. Mosgrove. The Memorial Church. Fairhaven, 1940

Original yellow form: Eligibility file _____
copies: Inventory form
Town file(w/corresp.) _____
Macris _____
NR director _____

FAI. 96

Community: Fairhaven

MHC OPINION: ELIGIBILITY FOR NATIONAL REGISTER

Date Received: 4.15.94 Date Due: Date Reviewed: 4/20/94

Type: Individual District (Attach map indicating boundaries)

Name: Unitarian Memorial Church Inventory Form: # 96, 50 & 29

Address: 104(?) Green St.

Requested by: Robert Hamilton, 38 Walnut St., Fairhaven 05719

Action: Honor ITC Grant R & C Other:

Agency: Staff in charge of Review: Elsa

MHC OPINION: ELIGIBILITY FOR NATIONAL REGISTER

INDIVIDUAL PROPERTIES	Date Due	Date Reviewed	DISTRICTS
Type: Individual	District (Attach map indicating boundaries)		
<input checked="" type="checkbox"/> Eligible			<input checked="" type="checkbox"/> Eligible
<input type="checkbox"/> Eligible, also in district			<input type="checkbox"/> Ineligible
<input type="checkbox"/> Eligible only in district			<input type="checkbox"/> More information needed
<input type="checkbox"/> Ineligible			
<input type="checkbox"/> More information needed			
CRITERIA:	A ?	B	<u>C</u> D
LEVEL:	<u>Local</u>	State	National
STATEMENT OF SIGNIFICANCE by PR			

The Unitarian Memorial Church, 104 Green Street, Fairhaven along with its associated Parsonage (MHC# 50) and Parish House (MHC# 29) are eligible for listing on the National Register under Criterion C and possibly Criterion A on the Local level.

This complex meets Criterion C for its outstanding representation of the Neo Gothic and Tudor Revival style of architecture and its association with architect Charles Brigham. Brigham also built Fairhaven Town Hall, the Millicent Library and many other institutional, religious and residential buildings.

To meet Criterion A, more information on the role of the Unitarian Memorial Church in Fairhaven will be needed. More information is also needed regarding the connection, if any, with this church and the Rogers family/estate or with Charles Brigham and the Rogers family/estate. Any structures or objects associated with the church complex that are located on the grounds would also be included in the nomination.

INDIVIDUAL PROPERTIES	Date Due	Date Reviewed	DISTRICTS
Type: Individual	District (Attach map indicating boundaries)		
<input type="checkbox"/> Eligible			<input type="checkbox"/> Eligible
<input type="checkbox"/> Eligible, also in district			<input type="checkbox"/> Ineligible
<input type="checkbox"/> Eligible only in district			<input type="checkbox"/> More information needed
<input type="checkbox"/> Ineligible			
<input type="checkbox"/> More information needed			
CRITERIA:	A	B	C D
LEVEL:	Local	State	National
STATEMENT OF SIGNIFICANCE by			

INVENTORY FORM CONTINUATION SHEET

MASSACHUSETTS HISTORICAL COMMISSION
MASSACHUSETTS ARCHIVES BUILDING
220 MORRISSEY BOULEVARD
BOSTON, MASSACHUSETTS 02125

Town

~~Fairhaven~~
Fairhaven

Property Address

9 Green St

Area(s)

~~FBI~~

Form No.

96

FAT

BUILDING INSPECTION DEPARTMENT - DISTRICT POLICE
PLAN RECORD

CASE B RACK 2 APART. 5 NO. 4242 ✓

BUILDING Rogers Memorial Church STORIES 2B
Parish House.

CITY OR TOWN Fairhaven. STREET Green & Center
Fairhaven. CLASS Misc Hall

TO BE USED FOR Parish Purposes.

OWNER H. H. Rogers. BRICK

ARCHITECT Chas. Brigham.

CERTIFICATE APPROVAL - SPECIFICATION REQUIREMENTS - REFERRED

DATE Apr. 29/1901

INSPECTOR MOORE.

FORM 41. 10,000. 2-2-19.

BUILDING INSPECTION DEPARTMENT - DISTRICT POLICE
PLAN RECORD

CASE A RACK 2 APART. 13 NO. 4264 ✓

BUILDING Rogers Memorial Church. STORIES 1B
Fairhaven.

CITY OR TOWN Fairhaven. STREET Centre, Green
Fairhaven. CLASS church

TO BE USED FOR Religious Purposes. & Union church

OWNER H. H. Rogers. Stone

ARCHITECT Chas. Brigham.

CERTIFICATE APPROVAL - SPECIFICATION REQUIREMENTS - REFERRED

DATE Sept. 16/1901

INSPECTOR MOORE.

FORM 41. 10,000. 2-2-19.