

Carpionato Properties | 9 People's Way Fairhaven, MA 02719 | Design Development | September 26, 2019



Carpionato Properties

9 People's Way
Fairhaven, MA

Project: 16148
Carpionato Properties

Sales: Stephanie Poyant Moran
Date: 04.08.19
Designer: PS

Note:
This is an original unpublished drawing created by Poyant Signs, Inc. It is submitted for your personal use in connection with a project being planned for you by Poyant Signs, Inc. It is not to be shown to anyone outside your organization, nor is it to be reproduced, copied or exhibited in any fashion until transferred.

Revisions:



This sign is intended to be installed in accordance with the requirements of Article 600 of the National Electrical Code and / or other applicable local codes. This includes proper grounding and bonding of the sign.

Approved By:

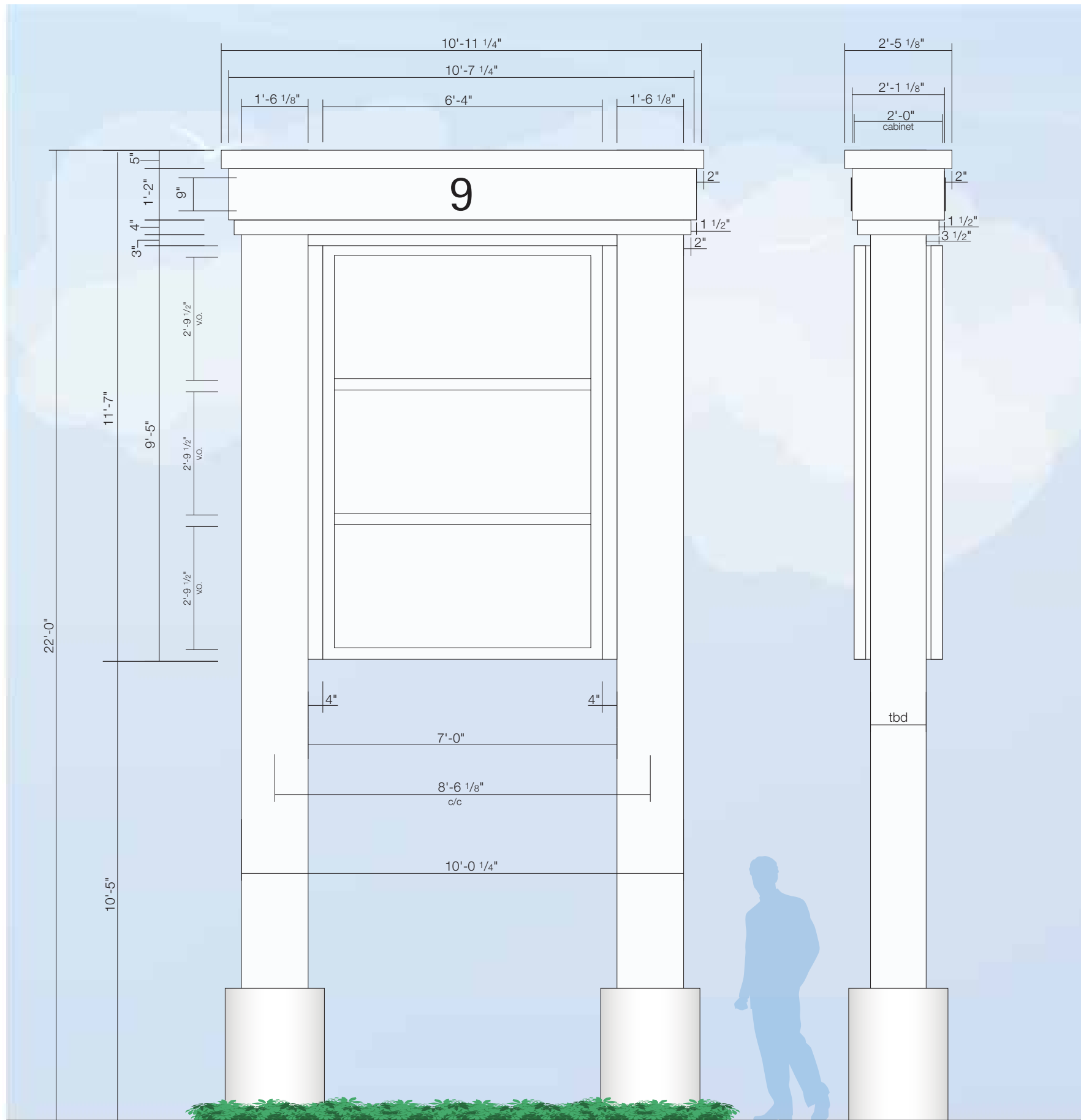
Date:

Site

Location Plan



A Sign Location Plan
Scale: Not to Scale



A Sign Elevation - Front View
Scale: 3/8"=1'-0"

B Sign Elevation - Side View
Scale: 3/8"=1'-0"

Specifications

Allowed SF:	60	Proposed SF:	59.6
Allowed Max Height:	22'	Proposed Max Height:	22'
Other Requirements:			

Qty = 1

Double Faced Internally Illuminated Pylon Sign

Remove & Dispose of Existing ID Sign and Reader Board
Existing Poles & Pole Covers to be Reused.
Cut Existing Poles and Pole Covers to Required Height in field
Repaint bases white P2.

Topper

- Cap: 5" x 2" x 1/8" architectural aluminum rectangular tube painted white P2. Skin top with .063 aluminum, paint white P2.

Address Section

- 1'-2" (h) x 10'-7 1/4" (w) x 2'-1 1/8" (d) extended downward under cap.
- 1 1/2" x 1 1/2" x 3/16" alum. angle frame with .063 aluminum face and side surfaces; painted white P2.
- Lower moulding is 4" x 4" x 1/8" architectural aluminum painted white P2.
- 1/4" thick acrylic address numbers stud mounted to flat surfaces front and back, paint black P1.

Tenant Cabinet

- 24" deep Wide Fab cabinet with 3 1/8" retainers and 3 1/8" dividers painted white P2.
- All 3 tenants to be blank 3/16" white lexan faces.
- Illuminated internally with 9' GE Line Fits.
- Two (2) vertical reveals 4 x 4" 1/8" x 9'-4 1/2" (long) aluminum tubes painted white P2.
- One (1) horizontal reveal 3 x 3" 1/8" x 7'-0" (wide) aluminum tube painted white P2.

Pole Covers and Concrete Bases.

- Two (2) existing aluminum pole covers
- Cut in field to required height
- Repaint white P3.
- Existing yellow concrete bases to be repainted P3.

Verify in Field (VIF)

- Height and depth of existing pole covers..
- Actual height of poles above grade.
- Size, shape, wall thickness, and OC of existing poles.
- Size, shape, wall thickness, and OC of stub poles (if any).
- Size, length, location of structural elements inside pole covers for attachment
- Location of poles in relation to pole covers (inside)
- How is existing reader board cabinet mounted to pole covers?

Colors & Materials

Paint

P1 Black, Satin Finish

P2 Akzo Nobel FLNA 40068 white

Paint in Field

P3 Benjamin Moore white to match
Akzo Nobel FLNA 40068 white



125 Samuel Barnet Boulevard
New Bedford, MA 02745
800.544.0961 | poyantsigns.com

Carpionato Properties

9 People's Way
Fairhaven, MA

Project: 16148
Carpionato Properties

Sales: Stephanie Poyant Moran
Date: 04.08.19
Designer: PS

Note:
This is an original unpublished drawing created by Poyant Signs, Inc. It is submitted for your personal use in connection with a project being planned for you by Poyant Signs, Inc. It is not to be shown to anyone outside your organization, nor is it to be reproduced, copied or exhibited in any fashion until transferred.

Revisions:
04-23-19 | PS | reduce to code
06-13-19 | PS | change to use existing posts, existing pole covers, larger size header and cabinet, wide fab cabinet from large A and Line fit illumination.
09-26-19 | PS | increase height to 22'

This sign is intended to be installed in accordance with the requirements of Article 600 of the National Electrical Code and / or other applicable local codes. This includes proper grounding and bonding of the sign.

Approved By:

Date:

Pylon Sign

Option A

Carpionato Properties


9 People's Way
Fairhaven, MA

Project: 16148
Carpionato Properties

Sales: Stephanie Poyant Moran
Date: 04.08.19
Designer: PS

Note:
This is an original unpublished drawing created by Poyant Signs, Inc. It is submitted for your personal use in connection with a project being planned for you by Poyant Signs, Inc. It is not to be shown to anyone outside your organization, nor is it to be reproduced, copied or exhibited in any fashion until transferred.

Revisions:
04-23-19 | PS | reduce to code
06-13-19 | PS | change to use existing posts, existing pole covers, larger size header and cabinet, wide fab cabinet from large A and Line fit illumination.
09-26-19 | PS | increase height to 22'

 This sign is intended to be installed in accordance with the requirements of Article 600 of the National Electrical Code and / or other applicable local codes. This includes proper grounding and bonding of the sign.

Approved By:

Date:

Pylon Sign

Option A



© Photo Comp - Existing
Not to Scale



© Photo Comp - Proposed
Not to Scale