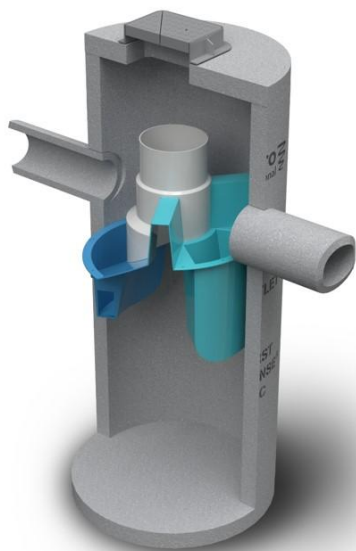


## Downstream Defender versus First Defense

First Defense® hydrodynamic separator is a flexible offline water quality unit with an internal bypass to address high peak flows. It also has the highest approved flow rates in the country so you can save contractors installation time and costs by using the smallest possible footprint. First Defense® is best used for:

- Multiple pipe inlets
- Surface grate inlet (with or without pipe Inlet)
- Small footprints
- Online or offline use
- New & retrofits sites



Downstream Defender® hydrodynamic separator traditionally used online so it's especially good at trash and oil capture. It's best used for:

- Free floating oil & trash capture

Larger treatment flows (> 7 cfs)

- Tailwater conditions
- Low headloss sites
- No internal bypass (use external bypass manhole if required)

