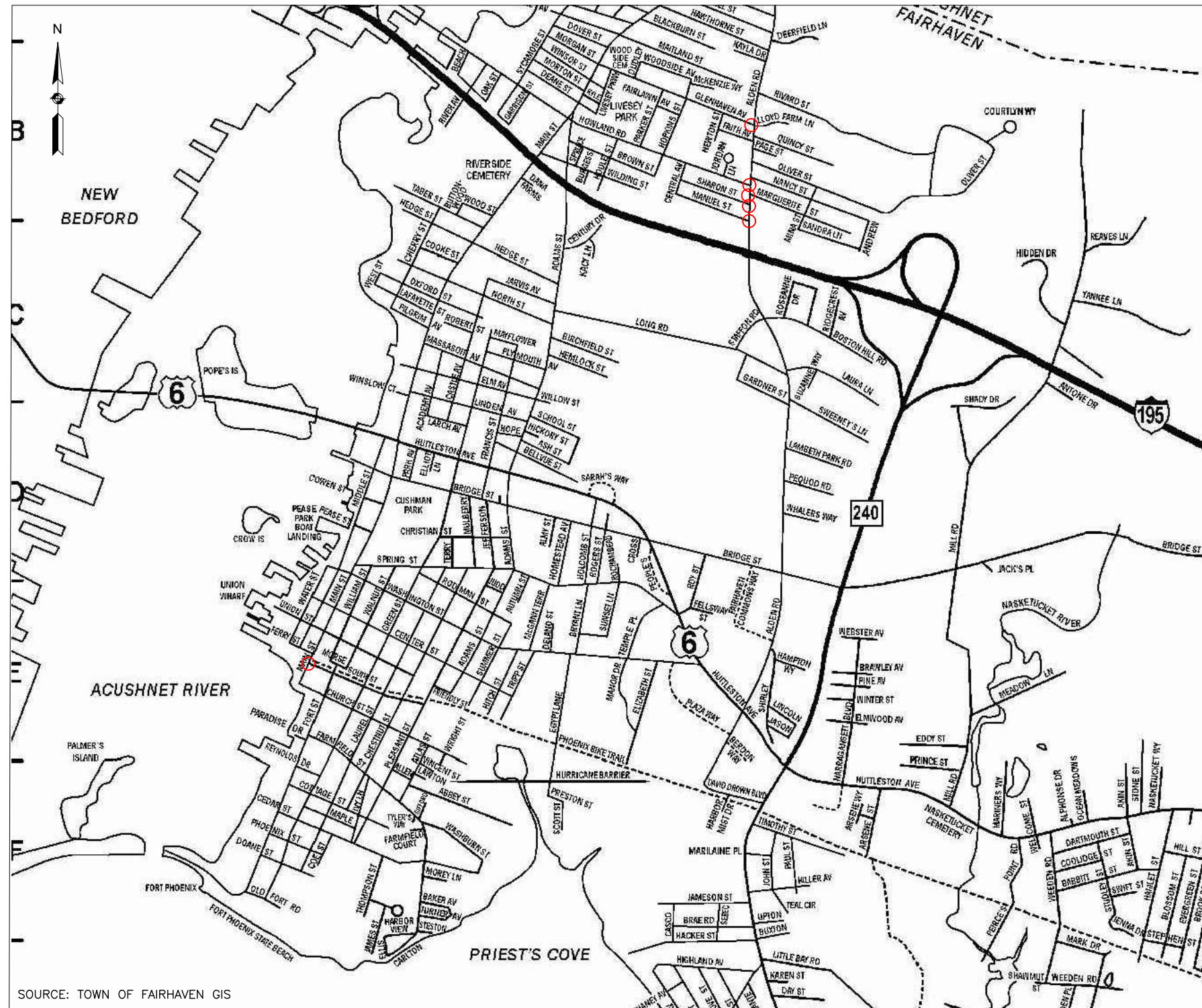


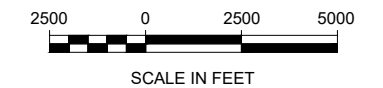
# TOWN OF FAIRHAVEN, MASSACHUSETTS

## FISCAL YEAR 2021 SHARED STREETS

### IMPROVEMENTS CONSTRUCTION DRAWINGS



#### LOCATION PLAN



○ PROJECT LOCATIONS

#### INDEX

SHEET NO.	DESCRIPTION
1	TITLE SHEET
2	GENERAL NOTES
3	CONSTRUCTION PLAN 1
4	CONSTRUCTION PLAN 2
5-7	WHEELCHAIR RAMP DETAILS 1-3

THE MASSACHUSETTS HIGHWAY DEPARTMENT STANDARD SPECIFICATIONS FOR HIGHWAYS AND BRIDGES DATED 2021, THE 2017 CONSTRUCTION STANDARD DETAILS, THE 2009 MANUAL ON UNIFORM TRAFFIC CONTROL DEVICES FOR STREETS AND HIGHWAYS WITH MASSACHUSETTS AMENDMENTS, THE 1990 STANDARD DRAWINGS FOR SIGNS AND SUPPORTS, THE 1968 STANDARD DRAWINGS FOR TRAFFIC SIGNALS AND HIGHWAY LIGHTING AND THE LATEST EDITION OF THE AMERICAN STANDARD FOR NURSERY STOCK, WILL GOVERN.

SOURCE: TOWN OF FAIRHAVEN GIS

PROJECT:	SHARED STREETS IMPROVEMENTS
DESIGN SUBMISSION:	FINAL DESIGN
DRAWING TITLE:	TITLE SHEET
PREPARED FOR:	TOWN OF FAIRHAVEN DEPARTMENT OF PUBLIC WORKS 5 ARSENE STREET FAIRHAVEN, MASSACHUSETTS

PREPARED BY:  
**GREEN INTERNATIONAL AFFILIATES, INC.**  
 TRANSPORTATION | STRUCTURAL | WATER RESOURCES | CIVIL/SITE  
 239 LITTLETON ROAD, SUITE 3 WESTFORD, MA 01886  
 978.923.0400 | www.greenintl.com

SCALE: AS NOTED	DESIGNED BY: AC,JG	SHEET NO. 1 OF 7
DATE: November 2021	DRAWN BY: AC,JG	
PROJECT NO. 20120	CHECKED BY: WW	

## GENERAL NOTES

1. THE WORK UNDER THIS PROJECT INCLUDES BUT IS NOT LIMITED TO THE CONSTRUCTION AND/OR RECONSTRUCTION OF CEMENT CONCRETE WHEELCHAIR RAMPS, CONSTRUCTION OF HOT MIX ASPHALT SIDEWALK, PROTECTION OF EXISTING UTILITIES TO REMAIN, INSTALLATION OF RECTANGULAR RAPID FLASHING BEACONS, PLACEMENT OF PAVEMENT MARKINGS, GRADING, AND TRAFFIC MAINTENANCE DURING CONSTRUCTION.
2. THE CONTRACTOR SHALL NOTIFY THE TOWN OF ALL CONFLICTS BETWEEN THE EXISTING UTILITIES AND PROPOSED WORK. THE ENGINEER RESERVES THE RIGHT TO MODIFY THE DESIGN TO SUIT ACTUAL FIELD CONDITIONS ENCOUNTERED.
3. ALL EXISTING STREET NAME, REGULATORY, GUIDE, AND WARNING SIGNS, INCLUDING POSTS, WITHIN THE LIMITS OF WORK ARE TO BE RETAINED UNLESS OTHERWISE NOTED.
4. THE CONTRACTOR SHALL RETAIN AND PROTECT ALL CURBS, FENCES, WALLS, TREES, SHRUBS, POSTS, LANDSCAPE FEATURES, AND OTHER MISCELLANEOUS ITEMS WITHIN ABUTTING PROPERTIES UNLESS OTHERWISE NOTED. WHEN RETAINING THOSE ITEMS IS NOT PRACTICAL IN THE OPINION OF THE ENGINEER, THE CONTRACTOR SHALL REMOVE, STOCKPILE, PROTECT AND RESET THE ITEMS. THE CONTRACTOR SHALL REPLACE ITEMS DAMAGED DURING REMOVAL, STOCKPILING, OR RESETTING DUE TO NEGLIGENCE, CARELESSNESS, OR MISHANDLING WITH EQUIVALENT NEW ITEMS AT NO COST TO THE OWNER. THE CONTRACTOR IS RESPONSIBLE FOR PROTECTING ALL EXISTING TREES NOT CALLED OUT IN THE PLANS TO BE REMOVED. THE COSTS FOR PROTECTION SHALL BE INCIDENTAL TO THE CONTRACT.
5. CONTRACTOR SHALL NOT PARK OR STORE CONSTRUCTION EQUIPMENT, MATERIALS OR VEHICLES UNDER THE DRIPLINE OF ANY TREE.
6. THE CONTRACTOR SHALL PROVIDE ALL SAFETY CONTROL (SIGNS, REFLECTORIZED DRUMS, ETC) FOR CONSTRUCTION OPERATIONS IN ACCORDANCE WITH THE TRAFFIC MANAGEMENT PLANS INCLUDED HEREIN AND THE 2009 MANUAL ON UNIFORM TRAFFIC CONTROL DEVICES.
7. THE CONTRACTOR SHALL INSTALL ALL EROSION CONTROL MEASURES PRIOR TO THE START OF WORK.
8. ALL AREAS WITHIN THE PROPOSED SLOPE LIMITS SHALL BE REPLACED IN KIND UNLESS OTHERWISE NOTED.
9. ALL MATERIALS TO BE REMOVED AND DISCARDED SHALL BE DELIVERED BY THE CONTRACTOR TO THE TOWN OF FAIRHAVEN AND STACKED AT A LOCATION DESIGNATED BY THE TOWN.
10. ALL UTILITIES AND THEIR APPURTENANCES SHALL BE RETAINED AND PROTECTED UNLESS OTHERWISE NOTED.
11. CONTRACTOR SHALL PERFORM ITS OWN FIELD VERIFICATION OF THE EXISTING CONDITIONS, GRADES, AND ELEVATIONS PRIOR TO STARTING CONSTRUCTION. THE CONTRACTOR SHALL NOTIFY THE ENGINEER OF ANY DISCREPANCIES, CONFLICTS OR DRAINAGE ISSUES. THE CONTRACTOR IS RESPONSIBLE FOR BUILDING ALL WALKS AND WHEELCHAIR RAMPS TO ADA AND MAAB REQUIREMENTS. ANY WORK NOT MEETING ADA OR MAAB SHALL BE RECONSTRUCTED BY THE CONTRACTOR AT NO ADDITIONAL COST TO THE OWNER.



## PLAN NOTES

1. THE EXISTING CONDITIONS SHOWN IN THE AERIAL PHOTOS IN THIS PLAN SET ARE FROM 2019 USGS COLOR ORTHO IMAGERY. THE CONTRACTOR SHALL NOTE THAT IN SOME LOCATIONS FIELD CONDITIONS HAVE CHANGED SINCE THE AERIAL PHOTOS WERE TAKEN. THE CONTRACTOR SHALL PERFORM ITS OWN FIELD VERIFICATION PRIOR TO COMPLETING ANY OF THE PROPOSED WORK.
2. THESE DRAWINGS WERE PREPARED SOLELY FOR AND ARE INTENDED FOR THE WORK ASSOCIATED WITH THIS PROJECT. THE USE OR REUSE OF THESE DRAWINGS FOR OTHER PURPOSES OR BY PARTIES NOT DIRECTLY CONTRACTED TO THIS PROJECT IS PROHIBITED WITHOUT PRIOR WRITTEN PERMISSION FROM THE TOWN OF FAIRHAVEN.

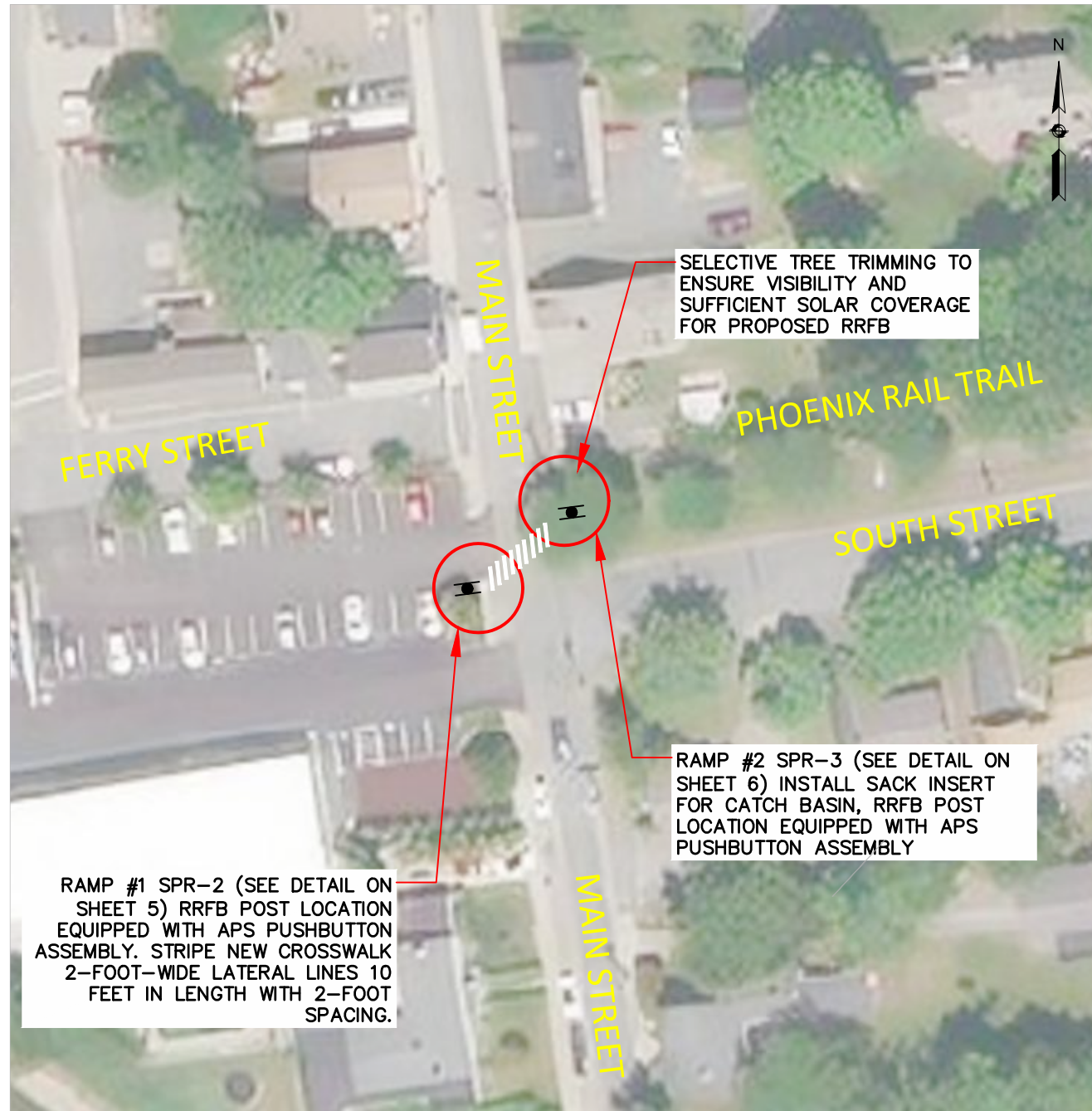
## UTILITY NOTES

1. THE CONTRACTOR IS HEREBY MADE AWARE THAT EXISTING UTILITIES, INCLUDING BUT NOT LIMITED TO EXISTING WATER AND DRAIN PIPES; DRAINAGE AND SEWER STRUCTURES; GAS LINES, COMMUNICATION LINES AND UTILITY POLES, MAY NEED TO BE PROTECTED AND/OR SHORED UP DURING THE CONSTRUCTION OF THE PROPOSED IMPROVEMENTS UNDER THIS PROJECT. THE COST OF THE WORK REQUIRED FOR THE PROTECTION, MAINTENANCE AND SUPPORT OF THESE OR OTHER EXISTING ABOVE GROUND OR UNDERGROUND UTILITIES IN THE VICINITY OF THE PROPOSED WORK SHALL NOT BE PAID FOR SEPARATELY BUT SHALL BE CONSIDERED INCIDENTAL TO THE WORK UNDER THIS CONTRACT.
2. PRIOR TO THE START OF ANY WORK ON THE SITE, THE CONTRACTOR SHALL VERIFY THE ACTUAL LOCATION OF ALL UTILITIES, SHOWN OR NOT SHOWN ON THIS PLAN. CONTACT DIG-SAFE AT 1-888-344-7233 (1-888-DIG-SAFE) AT LEAST 72 HOURS PRIOR TO THE START OF EXCAVATION.

Y:\SharePointEngineering\Projects\2020\20120\DWG\CURRENT DESIGN\Shared Street\COVER.dwg Printed: 11/23/2021 11:30 AM

PROJECT:	<b>SHARED STREETS IMPROVEMENTS</b>
DESIGN SUBMISSION:	<b>FINAL DESIGN</b>
DRAWING TITLE:	<b>GENERAL NOTES</b>
PREPARED FOR:	 <b>TOWN OF FAIRHAVEN</b> DEPARTMENT OF PUBLIC WORKS 5 ARSENE STREET FAIRHAVEN, MASSACHUSETTS
PREPARED BY:	 <b>GREEN INTERNATIONAL AFFILIATES, INC.</b> TRANSPORTATION   STRUCTURAL   WATER RESOURCES   CIVIL/SITE 239 LITTLETON ROAD, SUITE 3 WESTFORD, MA 01886 978.923.0400   www.greenintl.com
SCALE: AS NOTED	DESIGNED BY: AC,JG
DATE: November 2021	DRAWN BY: AC,JG
PROJECT NO. 20120	CHECKED BY: WW
SHEET NO. <b>2</b> OF <b>7</b>	

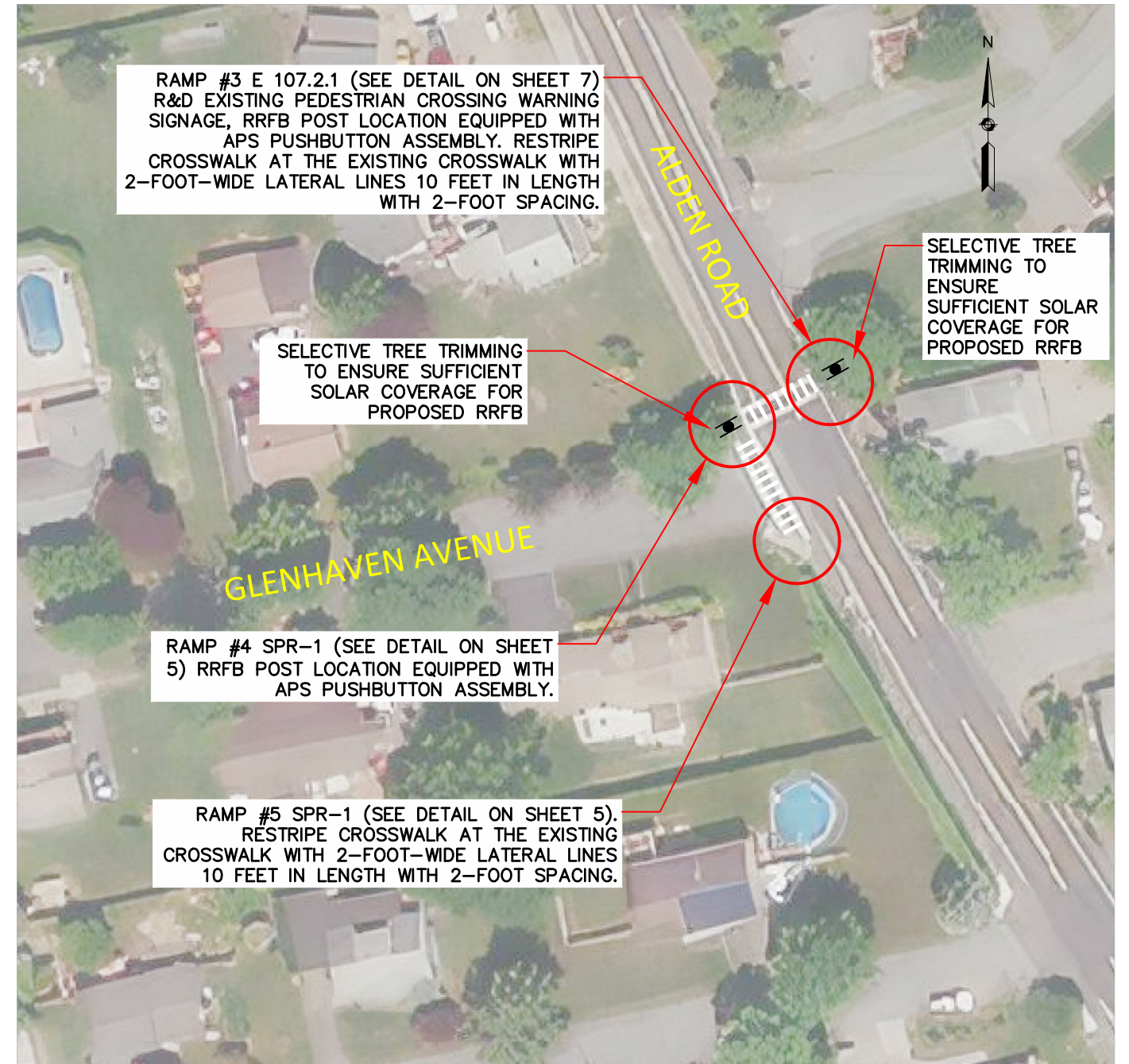
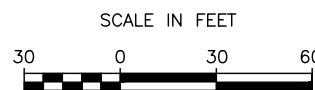
Y:\Share\Engineering\Projects\2020\20120\DWG\CURRENT DESIGN\Shared Street\projects.dwg Printed: 11/23/2021 11:31 AM



RRFB, WHEELCHAIR RAMP AND CROSSWALK LOCATIONS  
MAIN STREET AT SOUTH STREET/PHOENIX RAIL TRAIL

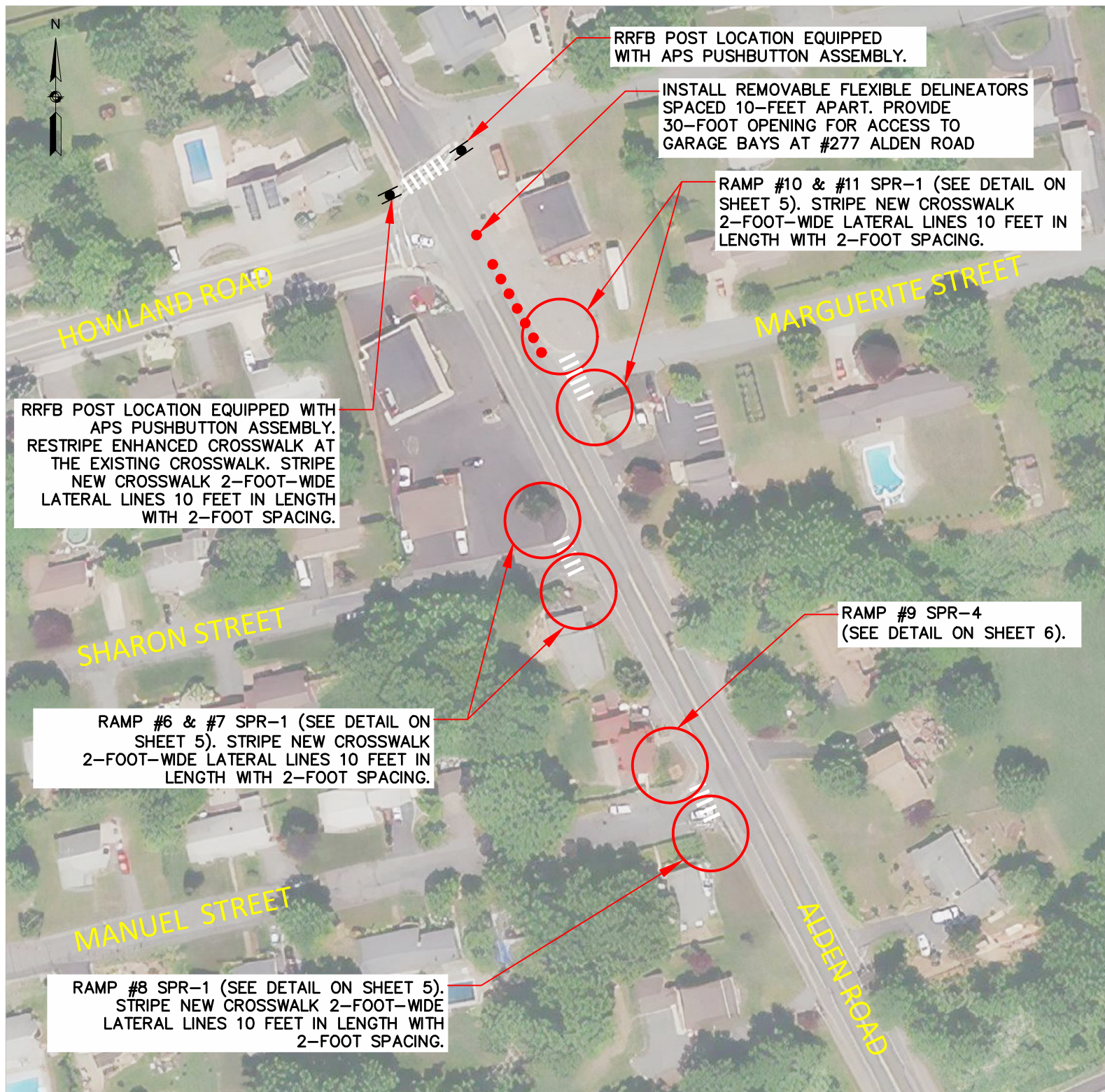
**LEGEND:**

- = APPROX. ADA-COMPLIANT WHEELCHAIR RAMP OR ITEM
- = APPROX. NEW OR RESTRIPE CROSSWALK
- = APPROX. RRFB LOCATION



RRFB, WHEELCHAIR RAMP AND  
CROSSWALK LOCATIONS  
ALDEN ROAD AT GLENHAVEN AVENUE

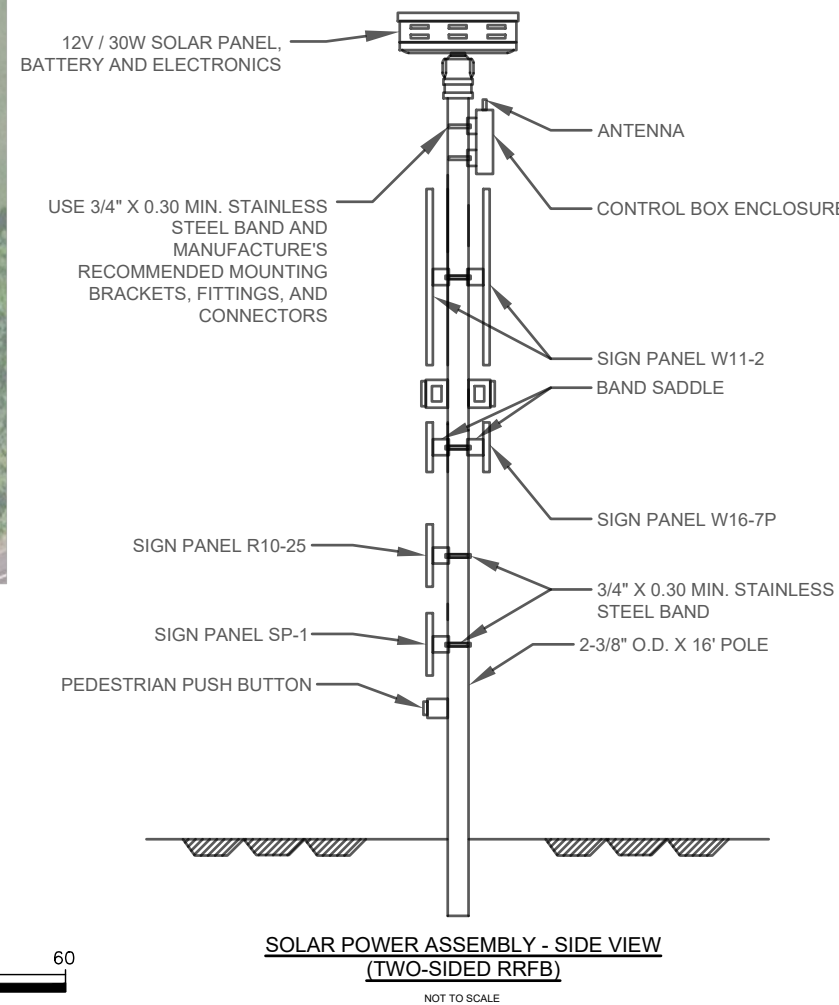
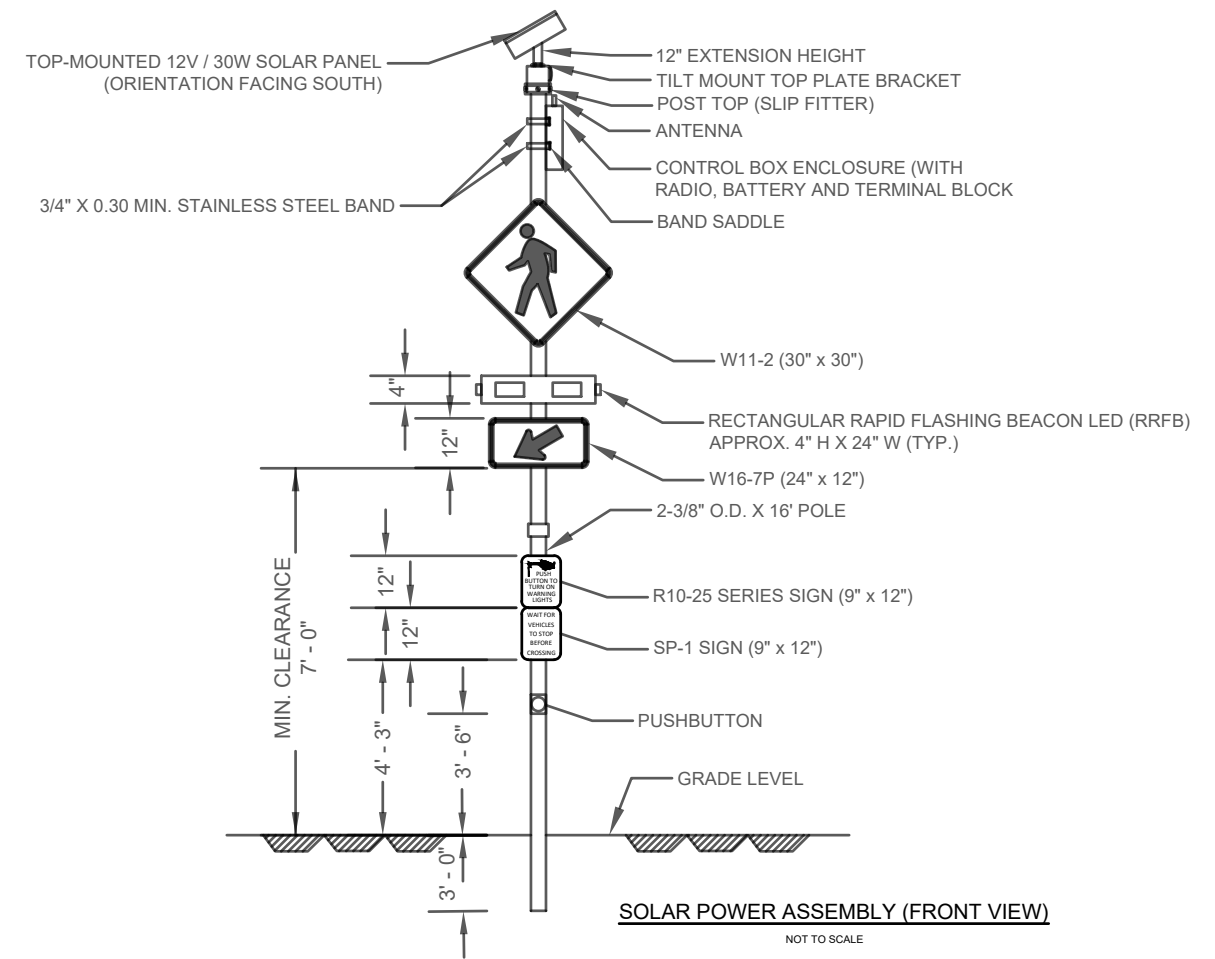
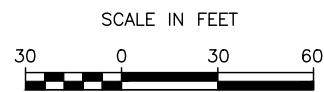
PROJECT:	SHARED STREETS IMPROVEMENTS	
DESIGN SUBMISSION:	FINAL DESIGN	
DRAWING TITLE:	CONSTRUCTION PLAN 1	
PREPARED FOR:	TOWN OF FAIRHAVEN DEPARTMENT OF PUBLIC WORKS 5 ARSENE STREET FAIRHAVEN, MASSACHUSETTS	
PREPARED BY:	<b>GREEN INTERNATIONAL AFFILIATES, INC.</b> TRANSPORTATION   STRUCTURAL   WATER RESOURCES   CIVIL/SITE 239 LITTLETON ROAD, SUITE 3 WESTFORD, MA 01886 978.923.0400   www.greenintl.com	
SCALE: AS NOTED	DESIGNED BY: AC,JG	SHEET NO. <b>3</b> OF <b>7</b>
DATE: 11/23/2021	DRAWN BY: AC,JG	
PROJECT NO. 20120	CHECKED BY: WW	



**RRFB, WHEELCHAIR RAMP AND CROSSWALK LOCATIONS  
ALDEN ROAD BETWEEN MANUEL STREET AND HOWLAND ROAD**

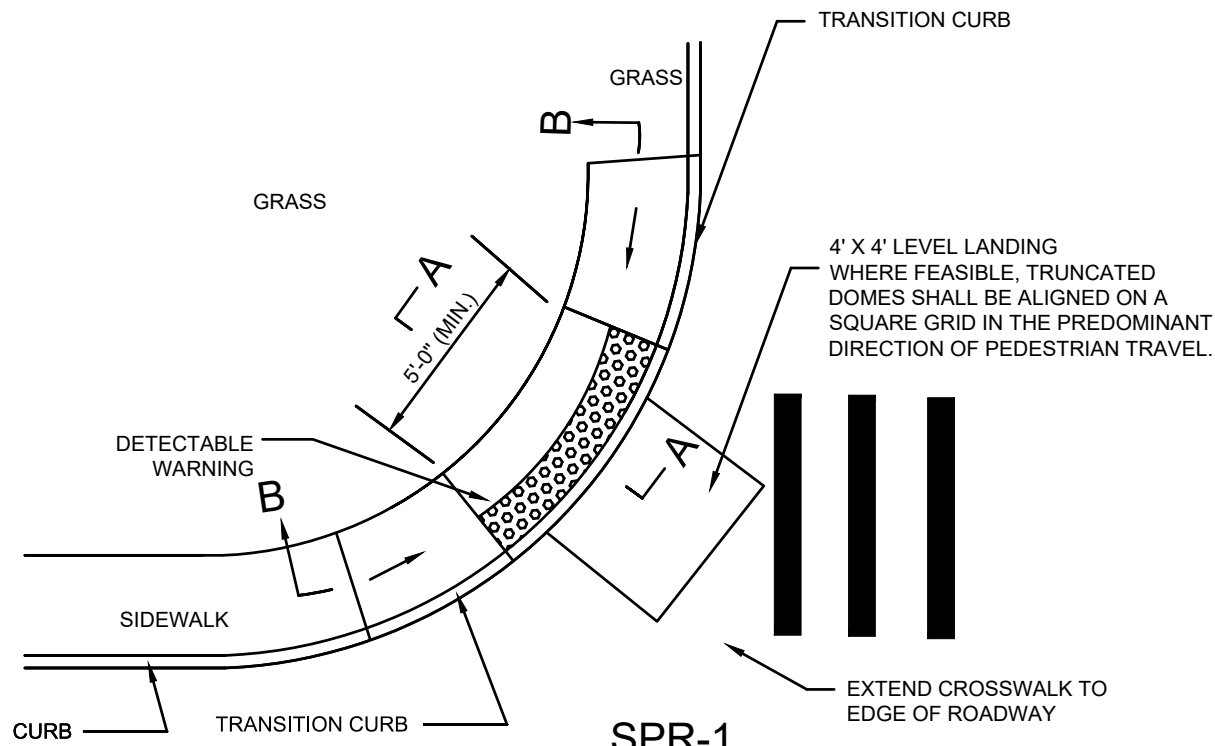
**NOTES:**

1. AERIAL PHOTO SHOWN IN THIS SHEET IS FROM 2019 USGS COLOR ORTHO IMAGERY. CONTRACTOR SHALL NOTE THAT FIELD CONDITIONS MAY HAVE CHANGED SINCE THIS AERIAL PHOTO WAS TAKEN.
2. ADJUST EXISTING GAS GATE FRAME AND COVER WITHIN SIDEWALK AT ALDEN ROAD AND MANUEL STREET, CONTRACTOR SHALL ENSURE GAS GATE FRAME AND COVER ARE FLUSH WITH THE SURFACE OF THE LEVEL LANDING AREA FOR THE WHEELCHAIR RAMP.

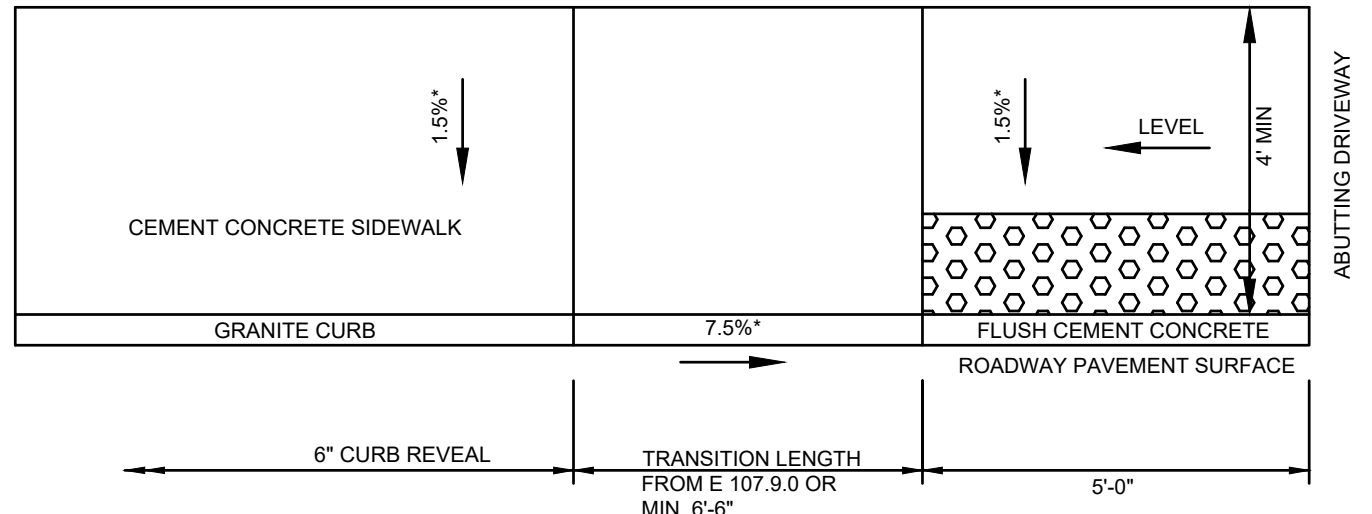


PROJECT:	<b>SHARED STREETS IMPROVEMENTS</b>
DESIGN SUBMISSION:	<b>FINAL DESIGN</b>
DRAWING TITLE:	<b>CONSTRUCTION PLAN 2</b>
PREPARED FOR:	TOWN OF FAIRHAVEN DEPARTMENT OF PUBLIC WORKS 5 ARSENE STREET FAIRHAVEN, MASSACHUSETTS
PREPARED BY:	<b>GREEN INTERNATIONAL AFFILIATES, INC.</b> TRANSPORTATION   STRUCTURAL   WATER RESOURCES   CIVIL/SITE 239 LITTLETON ROAD, SUITE 3 WESTFORD, MA 01886 978.923.0400   www.greenintl.com
SCALE: AS NOTED	DESIGNED BY: AC,JG
DATE: November 2021	DRAWN BY: AC,JG
PROJECT NO. 20120	CHECKED BY: WW
SHEET NO. <b>4 OF 7</b>	

Y:\Sharepoint\Projects\2020\20120\DWG\CURRENT DESIGN\Shared Street\projects.dwg Printed: 11/23/2021 11:31 AM

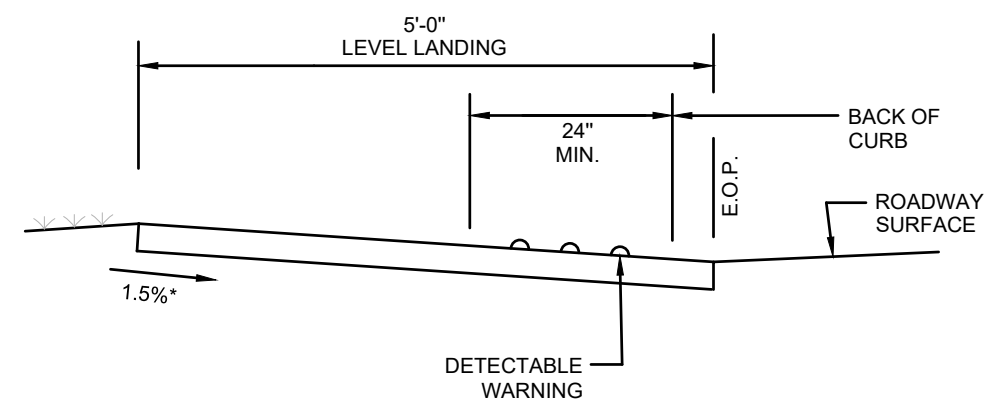


**SPR-1**  
**SINGLE END RAMP ON CORNER RADIUS:**  
**SIDEWALK ADJACENT TO CURB**  
 NOT TO SCALE

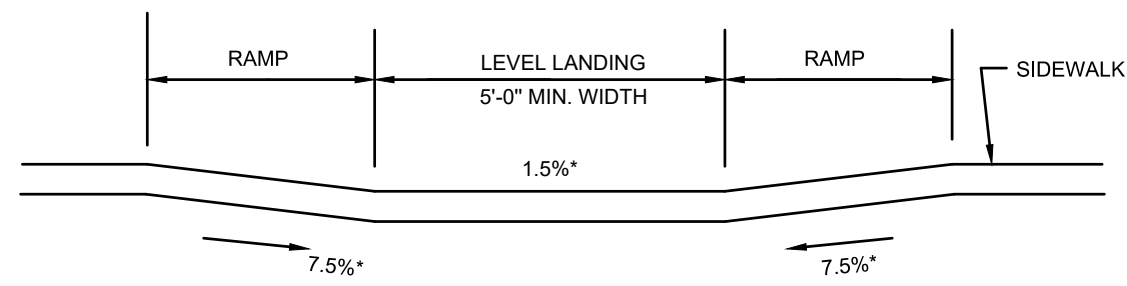


**NOTE:**  
 \* = TOLERANCE FOR CONSTRUCTION ±0.5%.

**SPR-2**  
**SINGLE SIDE RAMP AT DRIVEWAY OPENING**  
 NOT TO SCALE

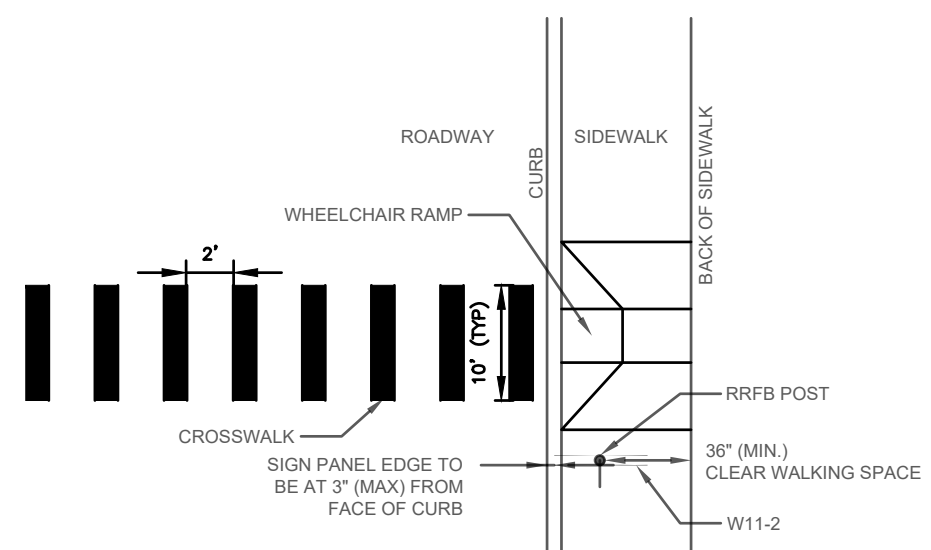


**SECTION A-A**




**SECTION B-B**

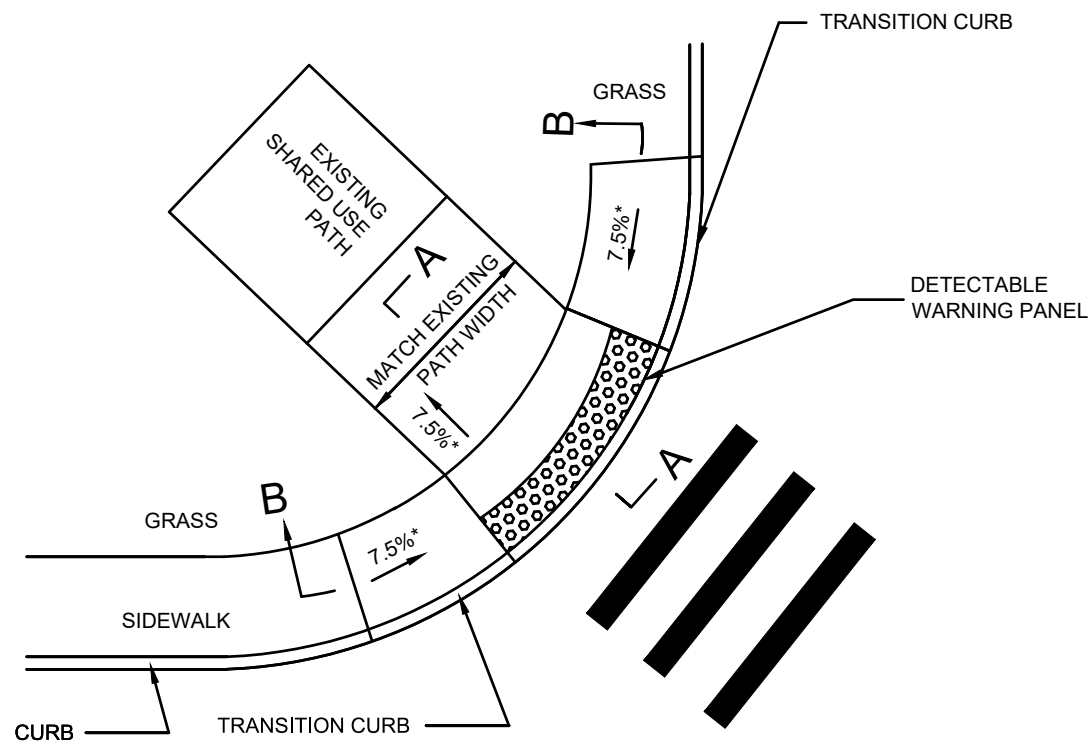
**NOTE:**  
 \* = TOLERANCE FOR CONSTRUCTION ±0.5%.



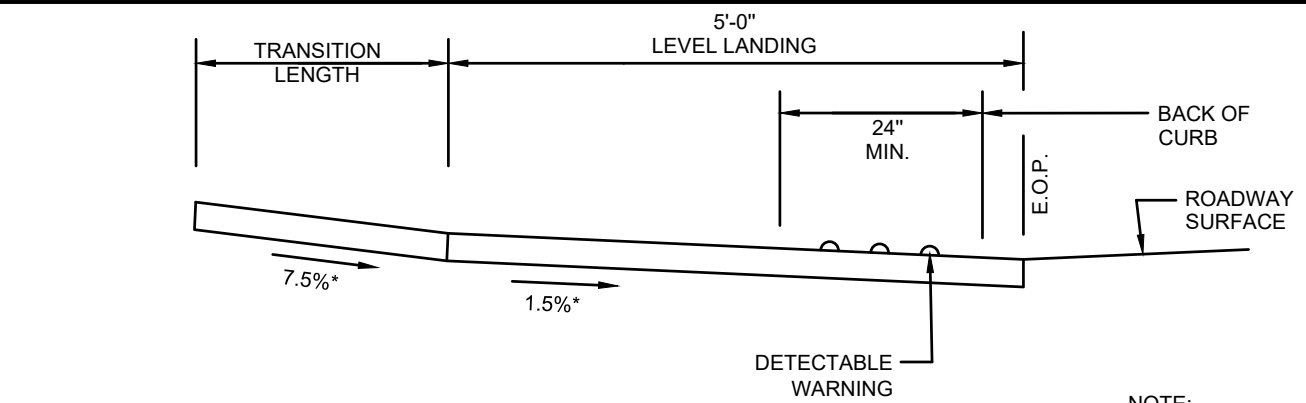
**RRFB PLACEMENT**  
 NOT TO SCALE

PROJECT:	<b>SHARED STREETS IMPROVEMENTS</b>
DESIGN SUBMISSION:	<b>FINAL DESIGN</b>
DRAWING TITLE:	<b>WHEELCHAIR RAMP DETAILS 1</b>
PREPARED FOR:	TOWN OF FAIRHAVEN DEPARTMENT OF PUBLIC WORKS 5 ARSENE STREET FAIRHAVEN, MASSACHUSETTS
PREPARED BY:	 <b>GREEN INTERNATIONAL AFFILIATES, INC.</b> TRANSPORTATION   STRUCTURAL   WATER RESOURCES   CIVIL/SITE 239 LITTLETON ROAD, SUITE 3 WESTFORD, MA 01886 978.923.0400   www.greenintl.com
SCALE: AS NOTED	DESIGNED BY: AC,JG
DATE: November 2021	DRAWN BY: AC,JG
PROJECT NO. 20120	CHECKED BY: WW
SHEET NO. <b>5</b> OF <b>7</b>	

Y:\Shared\Engineering\Projects\2020\20120\DWG\CURRENT DESIGN\Shared Street\projects.dwg Printed: 11/23/2021 11:31 AM

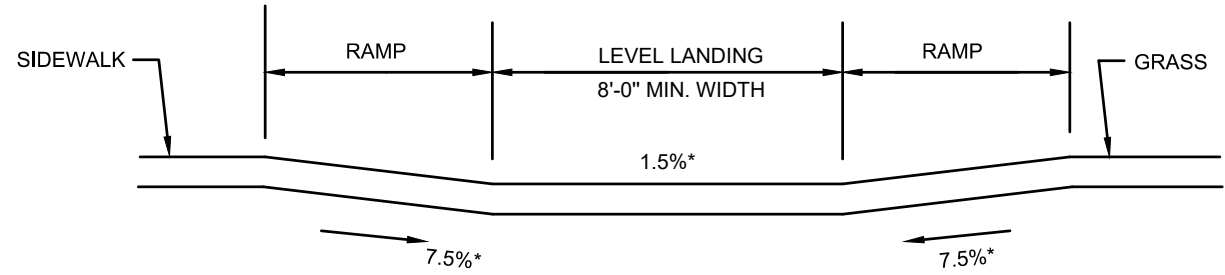


**SPR-3**  
**SINGLE END RAMP ON CORNER RADIUS:**  
**SIDEWALK ADJACENT TO CURB**  
 NOT TO SCALE

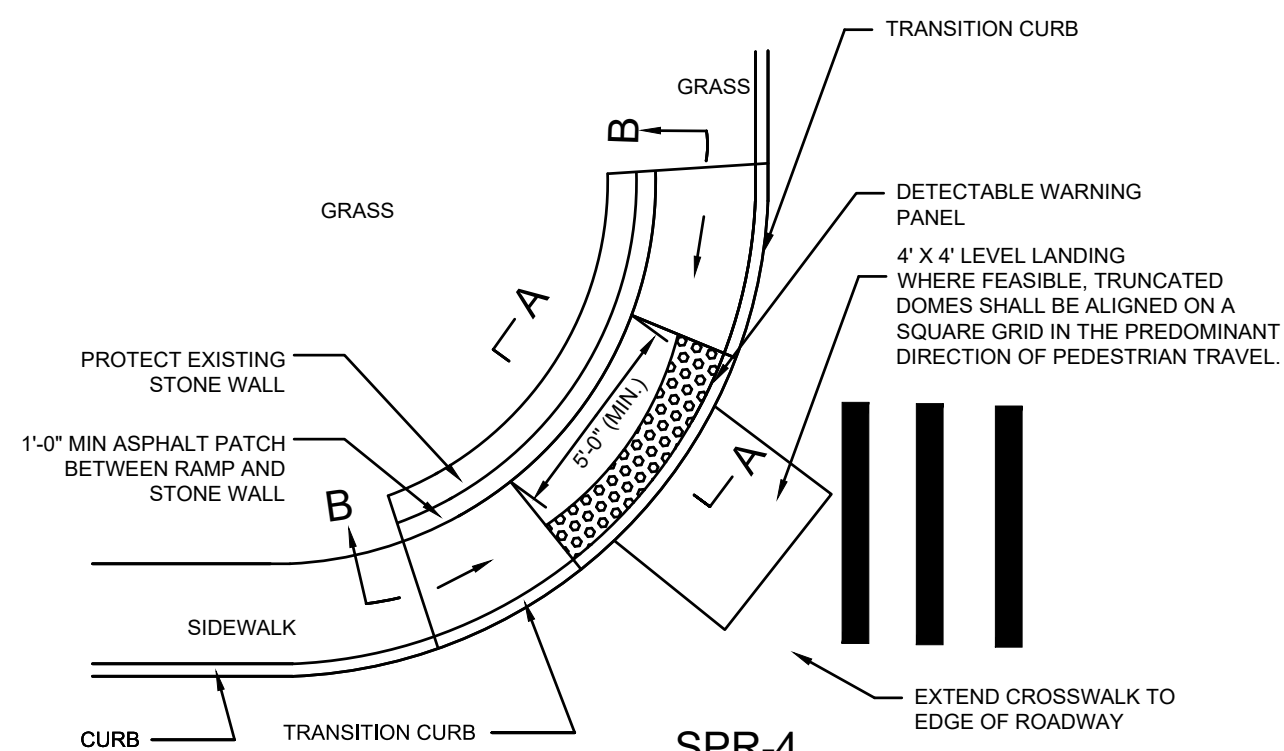


**SECTION A-A**

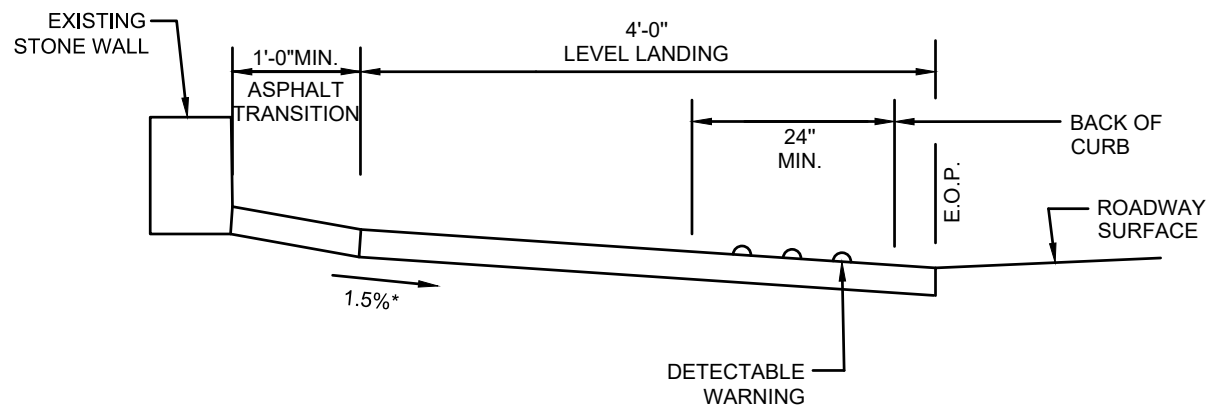
**NOTE:**  
 \* = TOLERANCE FOR CONSTRUCTION ±0.5%.



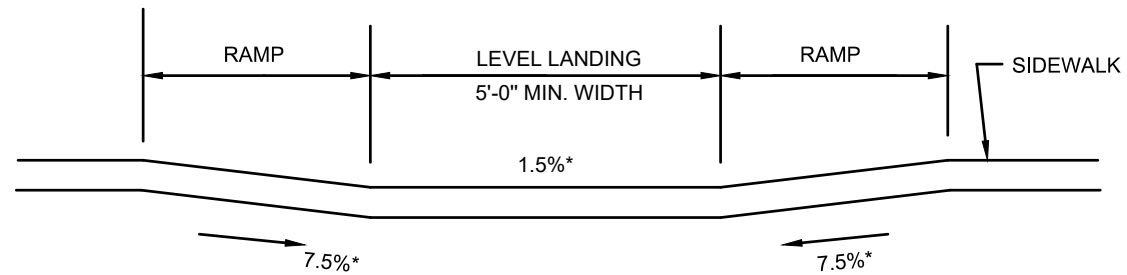
**SECTION B-B**



**SPR-4**  
**SINGLE END RAMP ON CORNER RADIUS:**  
**SIDEWALK ADJACENT TO CURB**  
 NOT TO SCALE



**SECTION A-A**

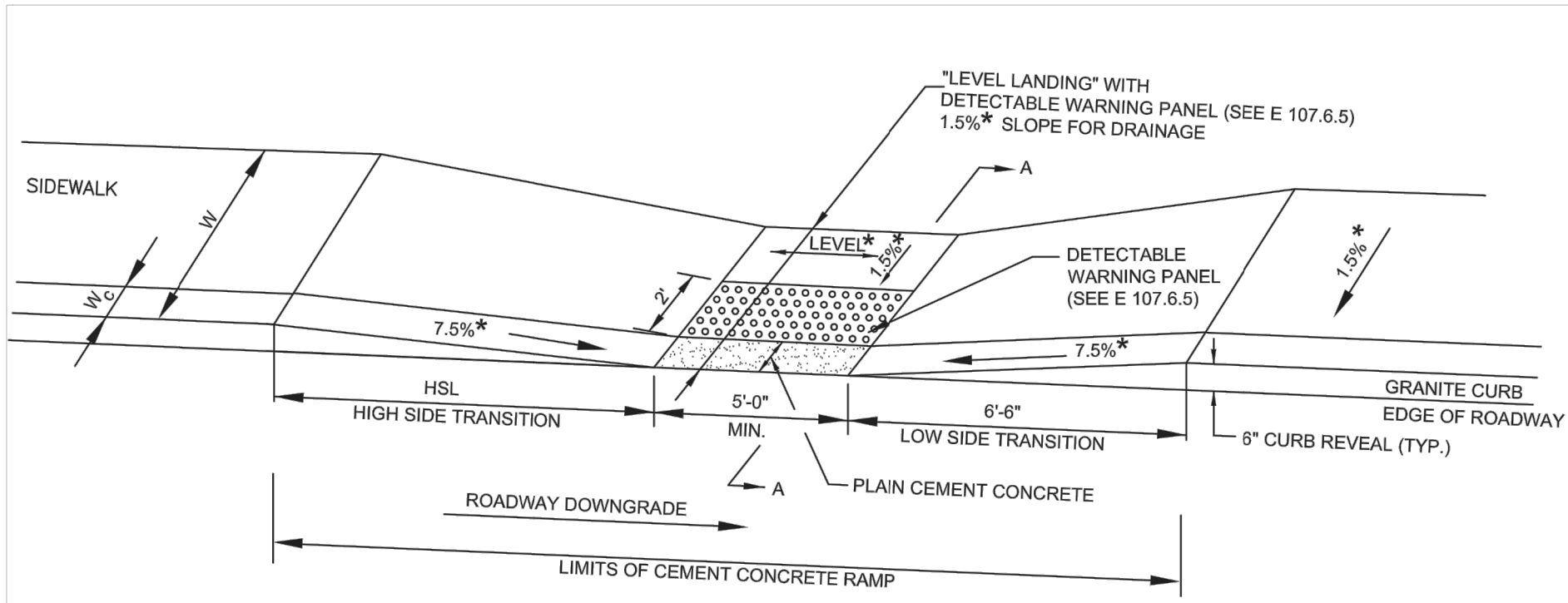


**SECTION B-B**

**NOTE:**  
 \* = TOLERANCE FOR CONSTRUCTION ±0.5%.

PROJECT:	<b>SHARED STREETS IMPROVEMENTS</b>
DESIGN SUBMISSION:	<b>FINAL DESIGN</b>
DRAWING TITLE:	<b>WHEELCHAIR RAMP DETAILS 2</b>
PREPARED FOR:	TOWN OF FAIRHAVEN DEPARTMENT OF PUBLIC WORKS 5 ARSENE STREET FAIRHAVEN, MASSACHUSETTS
PREPARED BY:	 <b>GREEN INTERNATIONAL AFFILIATES, INC.</b> TRANSPORTATION   STRUCTURAL   WATER RESOURCES   CIVIL/SITE 239 LITTLETON ROAD, SUITE 3 WESTFORD, MA 01886 978.923.0400   www.greenintl.com
SCALE: AS NOTED	DESIGNED BY: AC,JG
DATE: November 2021	DRAWN BY: AC,JG
PROJECT NO. 20120	CHECKED BY: WW
SHEET NO. <b>6</b> OF <b>7</b>	

Y:\Share\Engineering\Projects\2020\20120\DWG\CURRENT DESIGN\Shared Street\projects.dwg Printed: 11/23/2021 11:31 AM



**LEGEND**

HSL = HIGH SIDE TRANSITION LENGTH (SEE E 107.9.0)

W = SIDEWALK WIDTH

W<sub>c</sub> = CURB WIDTH

CC = CEMENT CONCRETE

\* = TOLERANCE FOR CONSTRUCTION ±0.5%

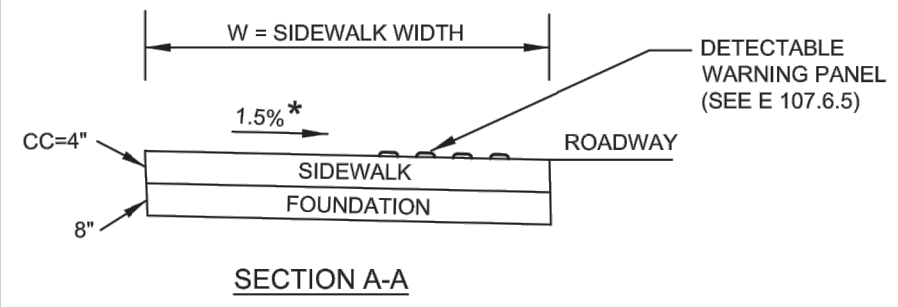
USABLE SIDEWALK WIDTH PER AAB = W-W<sub>c</sub>

USABLE SIDEWALK WIDTH PER AAB IS NOT TO BE LESS THAN 4'0"

SEE E 107.6.5 FOR DETAILS OF DETECTABLE WARNING PANEL

**NOTE:**

ROADWAY, GUTTER, AND FIRST 6" OF SIDEWALK TO BE ADJUSTED FOR FIELD CONDITIONS



**WHEELCHAIR RAMP ON NARROW SIDEWALK WITH  
DETECTABLE WARNING PANEL E 107.2.1**

NOT TO SCALE

PROJECT:	<b>SHARED STREETS IMPROVEMENTS</b>
DESIGN SUBMISSION:	<b>FINAL DESIGN</b>
DRAWING TITLE:	<b>WHEELCHAIR RAMP DETAILS 3</b>
PREPARED FOR:	TOWN OF FAIRHAVEN DEPARTMENT OF PUBLIC WORKS 5 ARSENE STREET FAIRHAVEN, MASSACHUSETTS
PREPARED BY:	 <b>GREEN INTERNATIONAL AFFILIATES, INC.</b> TRANSPORTATION   STRUCTURAL   WATER RESOURCES   CIVIL/SITE 239 LITTLETON ROAD, SUITE 3 WESTFORD, MA 01886 978.923.0400   www.greenintl.com
SCALE: AS NOTED	DESIGNED BY: AC,JG
DATE: November 2021	DRAWN BY: AC,JG
PROJECT NO. 20120	CHECKED BY: WW
SHEET NO. <b>7</b> OF <b>7</b>	