



Town of Fairhaven Climate Vulnerability Assessment

FY23 MVP Action Grant

April 24, 2023

12:30-1:30 PM

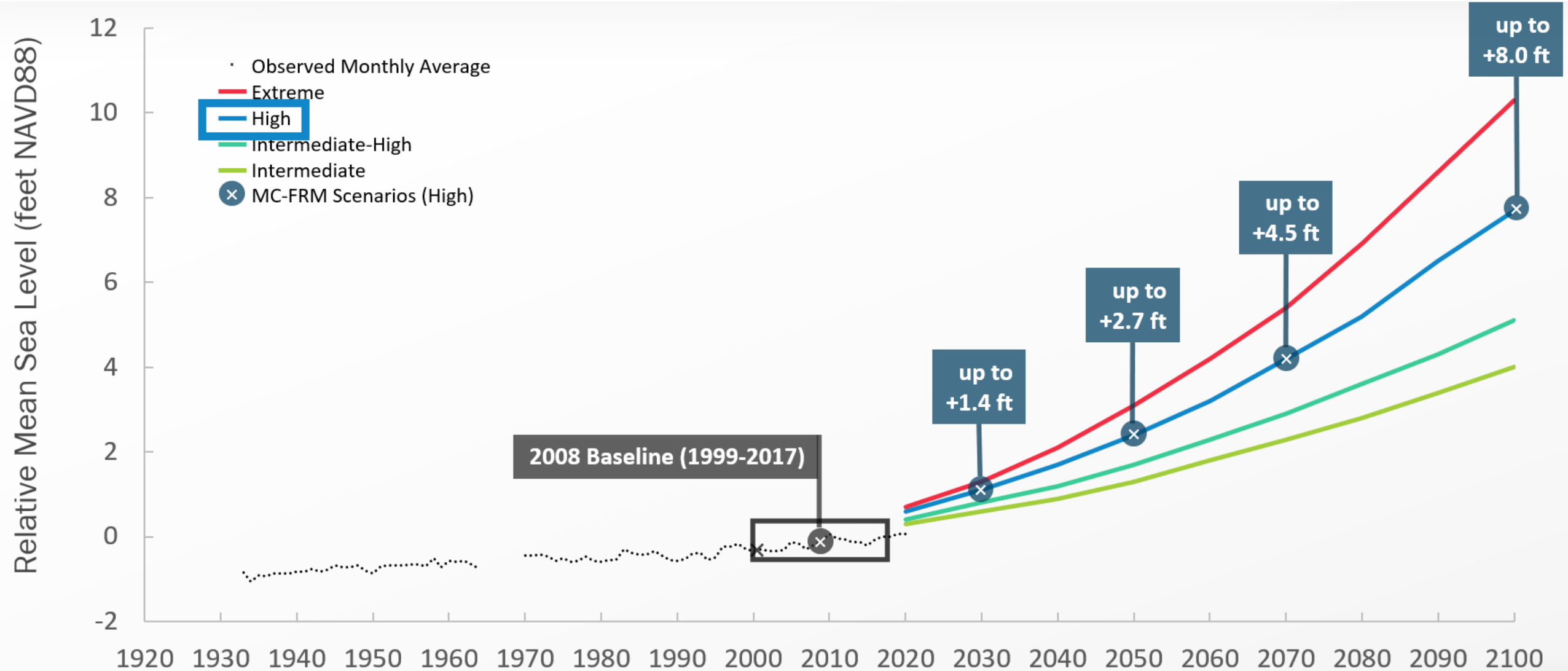


Agenda

1. Vulnerability Assessment Results
2. Adaptation Plan
3. Community Meeting #2
4. Questions & Discussion



Massachusetts Sea Level Rise Projections



› Projections from Resilient MA (DeConato and Kopp, 2017)

› Labels in flags are relative sea level rise from baseline year of 2008 (1999-2017) in MC-FRM

› SLR Projections are regionally representative of Fall River to Truro MA

Flood Probability Modeling – MC-FRM

Massachusetts Coastal Flood Risk Model



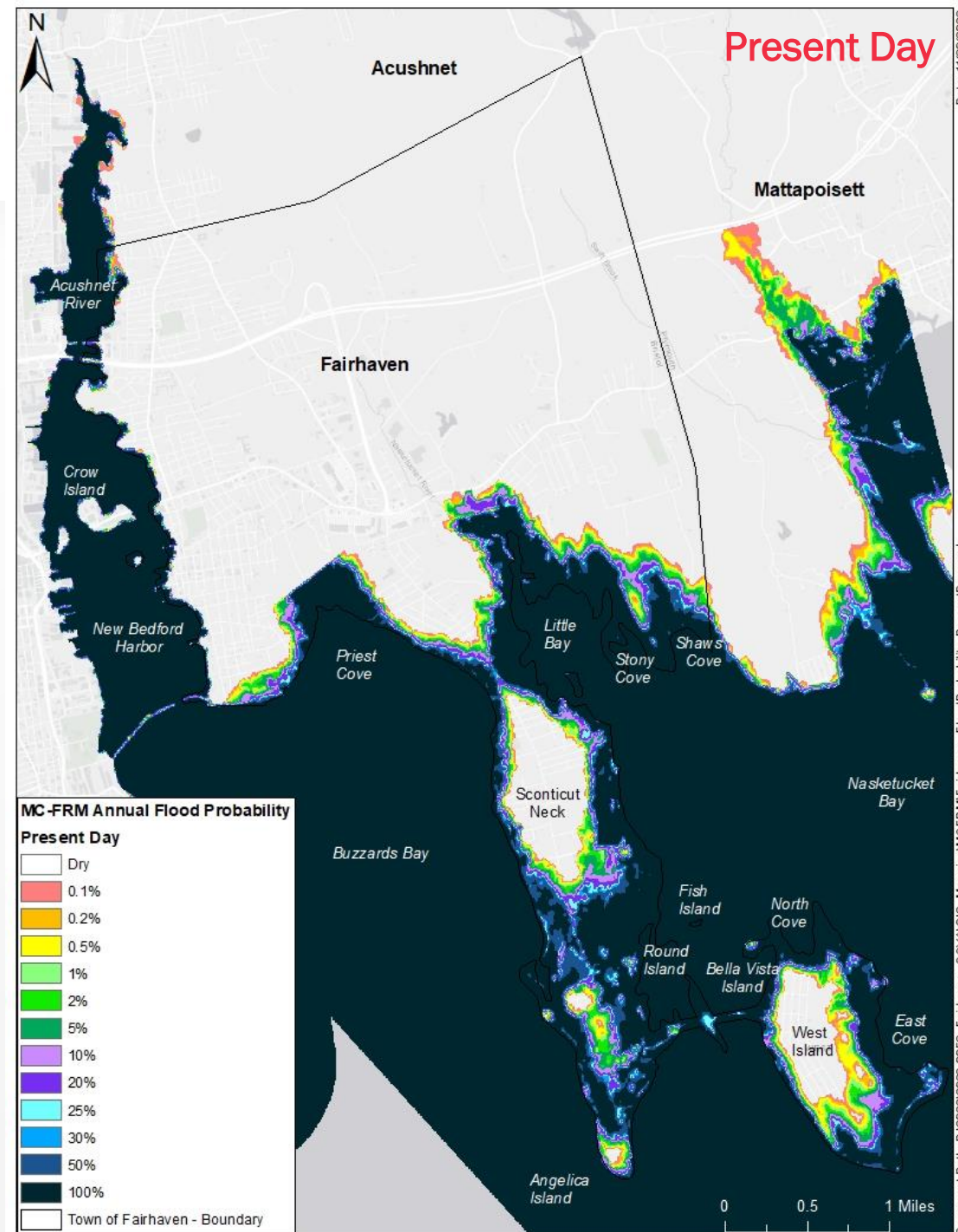
Annual Flood Probability Extent *Present Day*

High Vulnerability Outside of Hurricane Barrier

- › *Fort Phoenix*
- › *Girls Creek/Boys Creek*
- › *Sconticut Neck*
- › *West Island*
- › *Little Bay*
- › *Shaws Cove*

Reduced Vulnerability Inside of Hurricane Barrier

- › *New Bedford Harbor Waterfront*



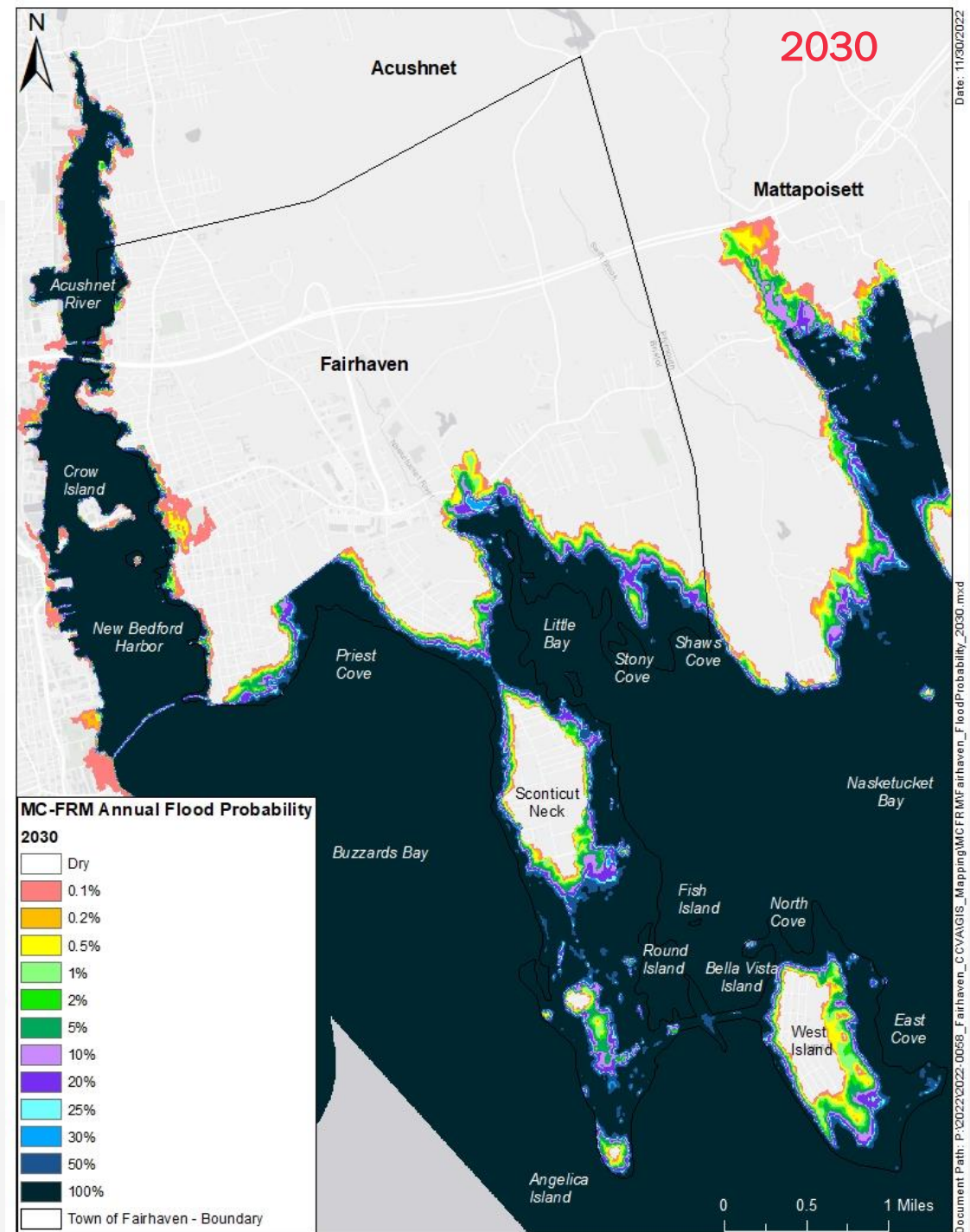
Annual Flood Probability Extent 2030

High Vulnerability Outside of Hurricane Barrier

- › Fort Phoenix
- › Girls Creek/Boys Creek
- › Sconticut Neck
- › West Island
- › Little Bay
- › Shaws Cove

Reduced Vulnerability Inside of Hurricane Barrier

- › Cushman Park
- › New Bedford Harbor Waterfront



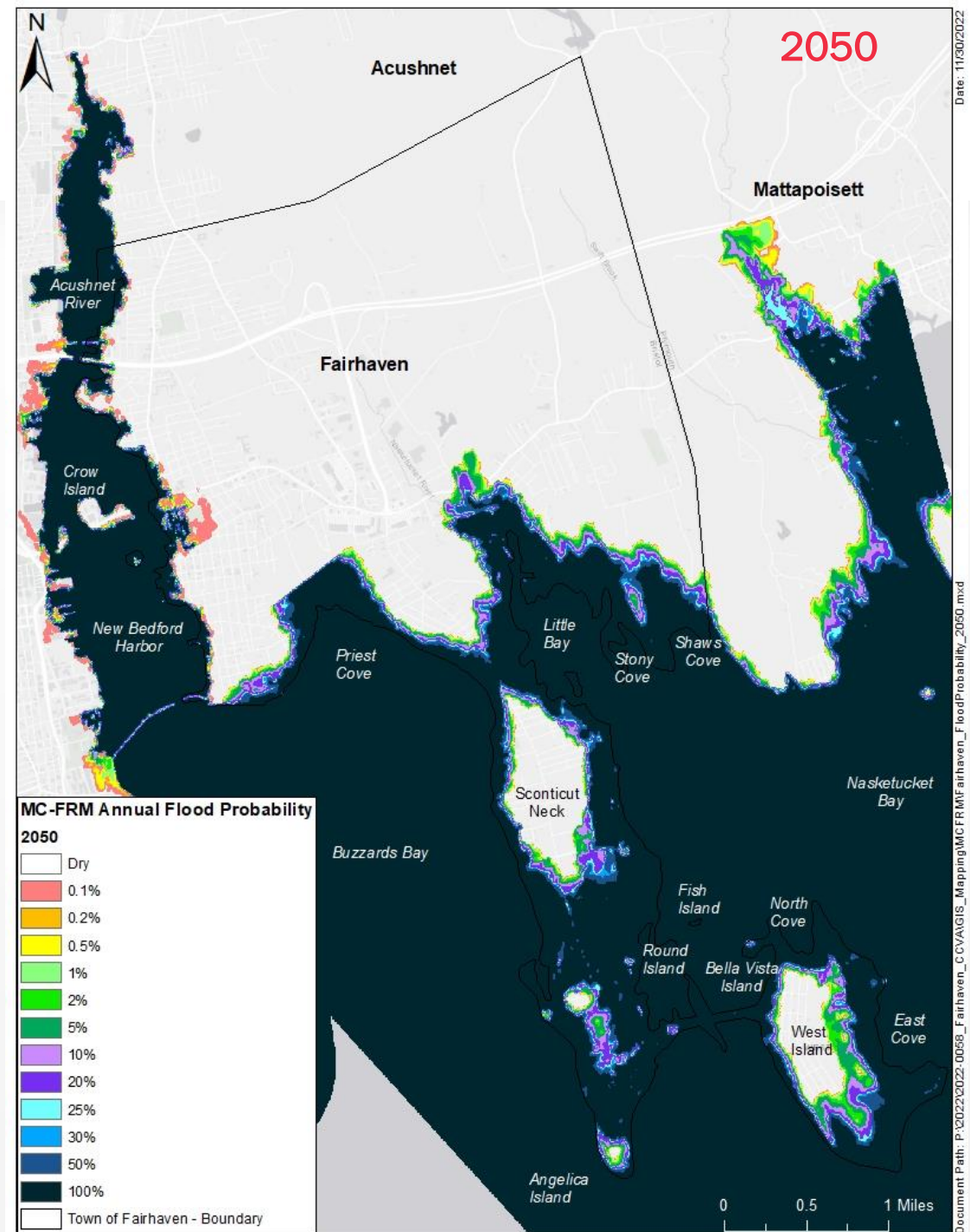
Annual Flood Probability Extent 2050

High Vulnerability Outside of Hurricane Barrier

- › Fort Phoenix
- › Girls Creek/Boys Creek
- › Sconticut Neck
- › West Island
- › Little Bay
- › Shaws Cove

Reduced Vulnerability Inside of Hurricane Barrier

- › Cushman Park
- › New Bedford Harbor Waterfront



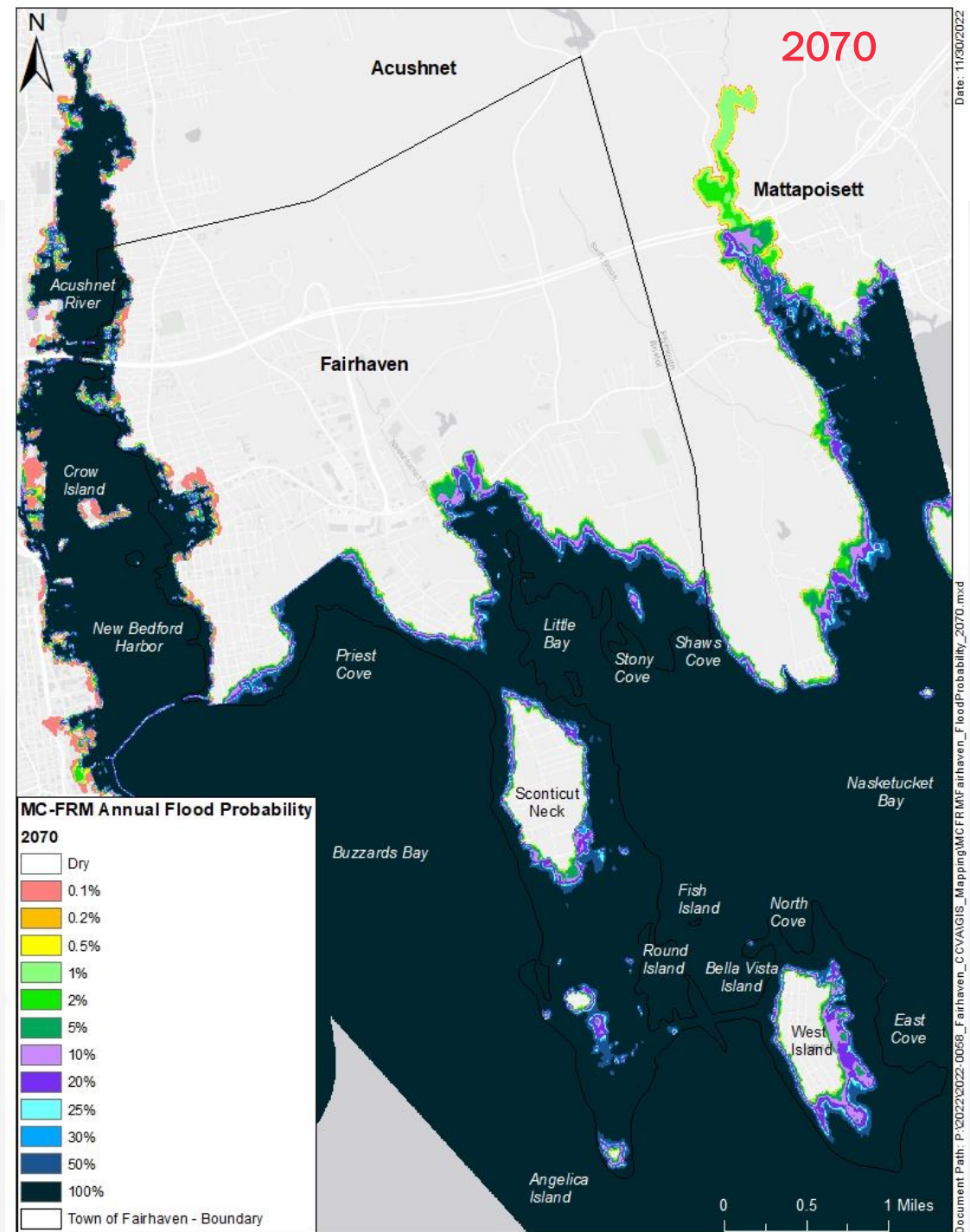
Annual Flood Probability Extent 2070

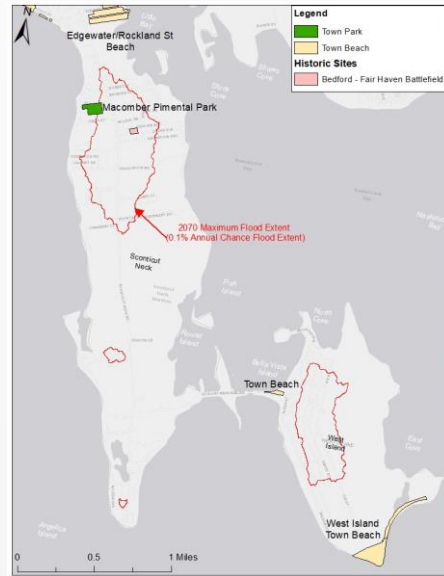
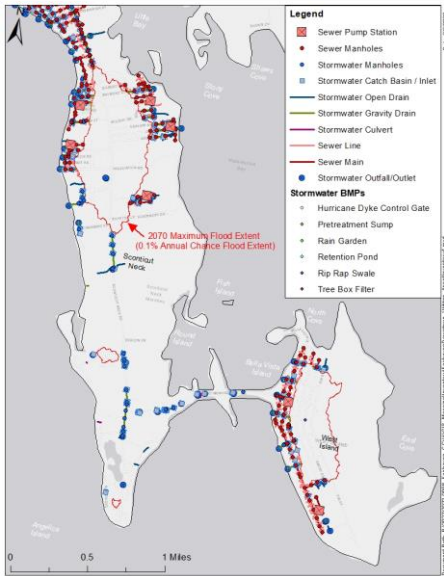
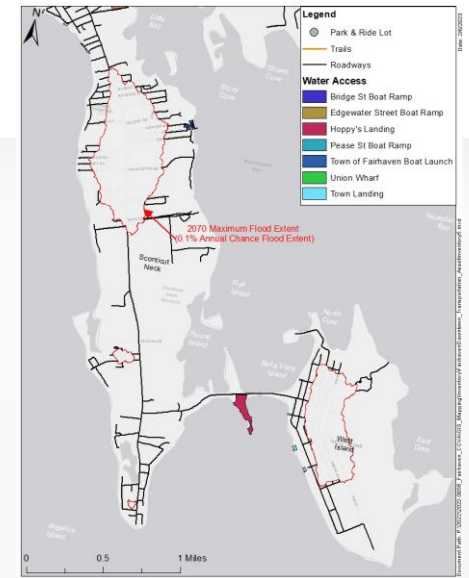
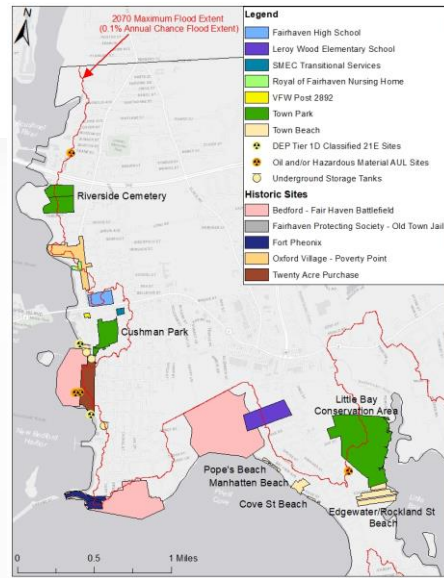
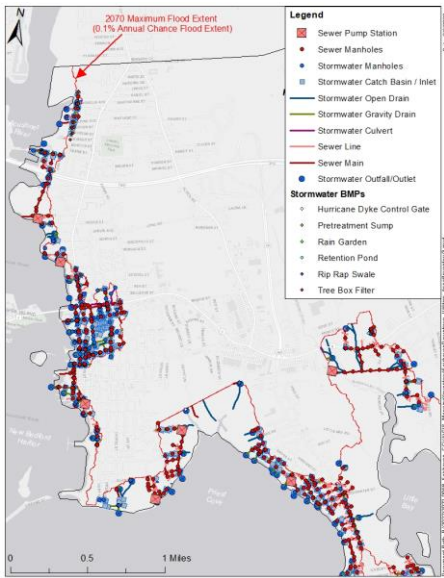
High Vulnerability Outside of Hurricane Barrier

- › Fort Phoenix
- › Girls Creek/Boys Creek
- › Sconticut Neck
- › West Island
- › Little Bay
- › Shaws Cove

Reduced Vulnerability Inside of Hurricane Barrier

- › Cushman Park
- › New Bedford Harbor Waterfront





Critical Infrastructure

- Public Infrastructure
- Open Space
- Historical Sites
- Utility Infrastructure
- Transportation Infrastructure

Consequence of Flooding

Example:

| Rating | Direct Impacts | | | Indirect Impacts | | |
|--------|---------------------|-----------------------|----------------|------------------------------------|-------------------|-----------------------------|
| | Service Loss Extent | Service Loss Duration | Cost of Damage | Public Safety & Emergency Services | Economic Activity | Public Health & Environment |
| 4 | Town | >30 d | >\$10M | Very High | Very High | Very High |
| 3 | Neighborhoods | 15-30 d | \$1M-\$10M | High | High | High |
| 2 | Neighborhood | 8-14 d | \$100K-\$1M | Moderate | Moderate | Moderate |
| 1 | Locality | 1-7 d | \$10K-\$100K | Low | Low | Low |
| 0 | Property | <1 d | <\$10K | None | None | None |

Consequence Scoring

Critical Infrastructure

| Name | Type | Address | Service_Loss | | | Damage_ | | Economic Health_and_ | | | Consequence_Score |
|---|----------------|------------------------|-------------------|----------|------|---------------|--------|----------------------|---|-----|-------------------|
| | | | Service_Loss_Area | Duration | Cost | Public_Safety | Impact | Environment | | | |
| Fairhaven High School | School | 12 Huttleston Avenue | 4 | 3 | 4 | 2 | 1 | 0 | 0 | 58% | |
| Royal of Fairhaven Nursing Home | Nursing Home | 184 Main Street | 2 | 3 | 2 | 4 | 1 | 0 | 0 | 50% | |
| Abbey Street Pump Station | Pump Station | Abbey Street | 2 | 3 | 2 | 1 | 0 | 2 | 2 | 42% | |
| Boulder Park Pump Station | Pump Station | James Street | 2 | 3 | 2 | 1 | 0 | 2 | 2 | 42% | |
| Shore Drive Pump Station | Pump Station | Shore Drive | 2 | 3 | 2 | 1 | 0 | 2 | 2 | 42% | |
| Weybridge Road Pump Station | Pump Station | Weybridge Road | 2 | 3 | 2 | 1 | 0 | 2 | 2 | 42% | |
| Town of Fairhaven Boat Launch | Water Access | Shore Dr/ Seaview Ave | 3 | 1 | 1 | 2 | 2 | 1 | 1 | 42% | |
| Bernese Street Pump Station | Pump Station | Bernese Street | 2 | 3 | 2 | 1 | 0 | 2 | 2 | 42% | |
| Sunrise Court Pump Station | Pump Station | Sunrise Court | 2 | 3 | 2 | 1 | 0 | 2 | 2 | 42% | |
| Manhattan Avenue Pump Station | Pump Station | Manhattan Avenue | 2 | 3 | 2 | 1 | 0 | 2 | 2 | 42% | |
| Camel Street Pump Station | Pump Station | Camel Street | 2 | 3 | 2 | 1 | 0 | 2 | 2 | 42% | |
| Rocky Point Road Pump Station | Pump Station | Rocky Point Road | 2 | 3 | 2 | 1 | 0 | 2 | 2 | 42% | |
| Railroad Ave Pump Station | Pump Station | Fairhaven WWTP | 2 | 3 | 2 | 1 | 0 | 2 | 2 | 42% | |
| Causeway Road Pump Station | Pump Station | Causway Road | 2 | 3 | 2 | 1 | 0 | 2 | 2 | 42% | |
| Pilgrim Avenue Pump Station | Pump Station | Pilgrim Avenue | 2 | 3 | 2 | 1 | 0 | 2 | 2 | 42% | |
| Taber Street Pump Station | Pump Station | Taber Street | 2 | 3 | 2 | 1 | 0 | 2 | 2 | 42% | |
| Middle Street Pump Station | Pump Station | Middle Street | 2 | 3 | 2 | 1 | 0 | 2 | 2 | 42% | |
| South Street Pump Station | Pump Station | South Street | 2 | 3 | 2 | 1 | 0 | 2 | 2 | 42% | |
| Union Wharf | Water Access | UNION WHARF | 2 | 2 | 2 | 1 | 2 | 0 | 0 | 38% | |
| SMEC Transitional Services | School | 56 Bridge Street | 3 | 3 | 1 | 1 | 1 | 0 | 0 | 38% | |
| Hoppy's Landing | Water Access | 55 GOULART MEMORIAL D | 1 | 2 | 3 | 1 | 0 | 0 | 0 | 29% | |
| Cushman Park | Open Space | 87 Main Street | 3 | 2 | 1 | 0 | 1 | 0 | 0 | 29% | |
| Riverside Cemetery | Open Space | Main Street | 2 | 1 | 1 | 0 | 1 | 1 | 1 | 25% | |
| Fort Pheonix | Open Space | FT PHOENIX PARK | 3 | 1 | 1 | 0 | 1 | 0 | 0 | 25% | |
| Macomber Pimental Park | Open Space | Bernese Street | 2 | 1 | 1 | 0 | 1 | 0 | 0 | 21% | |
| Fairhaven Protecting Society - Old Town | Historic Site | 9 WASHINGTON ST | 1 | 2 | 1 | 0 | 1 | 0 | 0 | 21% | |
| VFW Post 2892 | Club/Lodge | 109 Middle Street | 1 | 2 | 1 | 0 | 0 | 0 | 0 | 17% | |
| Edgewater/Rockland Street Beach | Open Space | Edgewater Street | 2 | 0 | 1 | 0 | 0 | 0 | 0 | 13% | |
| Edgewater Street Boat Ramp | Water Access | EDGEWATER ST | 1 | 0 | 1 | 1 | 0 | 0 | 0 | 13% | |
| Winsegansett Street Landing | Water Access | Winsegansett Street | 1 | 0 | 1 | 1 | 0 | 0 | 0 | 13% | |
| Town Beach | Open Space | Goulart Memorial Drive | 2 | 0 | 1 | 0 | 0 | 0 | 0 | 13% | |
| Gull Island Road Landing | Water Access | Gull Island Road | 1 | 0 | 1 | 1 | 0 | 0 | 0 | 13% | |
| Bonney Street Landing | Water Access | Bonney Street | 1 | 0 | 1 | 1 | 0 | 0 | 0 | 13% | |
| West Island Town Beach | Open Space | Fir Street | 2 | 0 | 1 | 0 | 0 | 0 | 0 | 13% | |
| Bernese Street Landing | Water Access | Bernese Street | 1 | 0 | 1 | 1 | 0 | 0 | 0 | 13% | |
| Briercliff Road Landing | Water Access | Briercliff Road | 1 | 0 | 1 | 1 | 0 | 0 | 0 | 13% | |
| Hathaway Street Landing | Water Access | Hathaway Street | 1 | 0 | 1 | 1 | 0 | 0 | 0 | 13% | |
| Jerusalem Road Landing | Water Access | Jerusalem Road | 1 | 0 | 1 | 1 | 0 | 0 | 0 | 13% | |
| Bridge St Boat Ramp | Water Access | BRIDGE ST | 1 | 0 | 1 | 1 | 0 | 0 | 0 | 13% | |
| Little Bay Conservation Area | Open Space | Peirces Point | 2 | 0 | 1 | 0 | 0 | 0 | 0 | 13% | |
| Pease St Boat Ramp | Water Access | PEASE PARK | 1 | 0 | 1 | 1 | 0 | 0 | 0 | 13% | |
| Calumet Street Landing | Water Access | Calumet Street | 1 | 0 | 1 | 1 | 0 | 0 | 0 | 13% | |
| Blue Point Road Landing | Water Access | Blue Point Road | 1 | 0 | 1 | 1 | 0 | 0 | 0 | 13% | |
| Sedgewick Street Landing | Water Access | Sedgewick Street | 1 | 0 | 1 | 1 | 0 | 0 | 0 | 13% | |
| Fishermans Road Landing | Water Access | Fishermans Road | 1 | 0 | 1 | 1 | 0 | 0 | 0 | 13% | |
| Little Neck Road Landing | Water Access | Little Neck Road | 1 | 0 | 1 | 1 | 0 | 0 | 0 | 13% | |
| Raymond Street Landing/Austria Ave Lar | Water Access | Raymond Street | 1 | 0 | 1 | 1 | 0 | 0 | 0 | 13% | |
| Park & Ride | Transportation | I-195, 72 Sycamore St. | 2 | 0 | 1 | 0 | 0 | 0 | 0 | 13% | |
| Cove St Beach | Open Space | Beach Cove St | 2 | 0 | 0 | 0 | 0 | 0 | 0 | 8% | |
| Pope's Beach | Open Space | Bayview Avenue | 2 | 0 | 0 | 0 | 0 | 0 | 0 | 8% | |
| Bedford - Fairhaven Battlefield | Historic Site | Town of Fairhaven | 1 | 0 | 1 | 0 | 0 | 0 | 0 | 8% | |
| Knollmere Beach | Open Space | Nonquitt Avenue | 2 | 0 | 0 | 0 | 0 | 0 | 0 | 8% | |
| Manhattan Beach | Open Space | Manhattan Avenue | 2 | 0 | 0 | 0 | 0 | 0 | 0 | 8% | |
| Oxford Village - Poverty Point | Historic Site | Main Street | 1 | 0 | 1 | 0 | 0 | 0 | 0 | 8% | |
| Twenty Acre Purchase | Historic Site | Water Street | 1 | 0 | 1 | 0 | 0 | 0 | 0 | 8% | |

Risk Scoring

Critical Infrastructure

| Name | Type | Address | CE_ftNA_VD88 | Consequence_Score | Prob_2030 | Prob_2050 | Prob_2070 | Risk_2030 | Risk_2050 | Risk_2070 | 1perc_Flood_Depth_2030 | 1perc_Flood_Depth_2050 | 1perc_Flood_Depth_2070 |
|---|----------------|------------------------|--------------|-------------------|-----------|-----------|-----------|-----------|-----------|-----------|------------------------|------------------------|------------------------|
| Abbey Street Pump Station | Pump Station | Abbey Street | 5.03 | 42% | 5 | 5 | 5 | 2.08 | 2.08 | 2.08 | 7.07 | 9.57 | 11.77 |
| Boulder Park Pump Station | Pump Station | James Street | 4.90 | 42% | 5 | 5 | 5 | 2.08 | 2.08 | 2.08 | 7.10 | 9.50 | 11.70 |
| Shore Drive Pump Station | Pump Station | Shore Drive | 5.65 | 42% | 5 | 5 | 5 | 2.08 | 2.08 | 2.08 | 6.35 | 8.65 | 10.85 |
| Weybridge Road Pump Station | Pump Station | Weybridge Road | 6.01 | 42% | 5 | 5 | 5 | 2.08 | 2.08 | 2.08 | 5.89 | 8.29 | 10.49 |
| Town of Fairhaven Boat Launch | Water Access | Shore Dr/ Seaview Ave | 7.15 | 42% | 5 | 5 | 5 | 2.08 | 2.08 | 2.08 | 4.85 | 7.15 | 9.35 |
| Bernese Street Pump Station | Pump Station | Bernese Street | 8.50 | 42% | 5 | 5 | 5 | 2.08 | 2.08 | 2.08 | 3.40 | 5.80 | 8.00 |
| Sunrise Court Pump Station | Pump Station | Sunrise Court | 9.21 | 42% | 5 | 5 | 5 | 2.08 | 2.08 | 2.08 | 2.89 | 5.19 | 7.49 |
| Manhattan Avenue Pump Station | Pump Station | Manhattan Avenue | 9.32 | 42% | 5 | 5 | 5 | 2.08 | 2.08 | 2.08 | 2.88 | 5.28 | 7.48 |
| Camel Street Pump Station | Pump Station | Camel Street | 9.38 | 42% | 5 | 5 | 5 | 2.08 | 2.08 | 2.08 | 2.52 | 4.72 | 6.92 |
| Rocky Point Road Pump Station | Pump Station | Rocky Point Road | 8.96 | 42% | 5 | 5 | 5 | 2.08 | 2.08 | 2.08 | 2.54 | 4.44 | 6.64 |
| Railroad Ave Pump Station | Pump Station | Fairhaven WWTP | 13.57 | 42% | 5 | 5 | 5 | 2.08 | 2.08 | 2.08 | 0.00 | 1.13 | 3.23 |
| Causeway Road Pump Station | Pump Station | Causway Road | 13.45 | 42% | 5 | 5 | 5 | 2.08 | 2.08 | 2.08 | 0.00 | 0.35 | 2.55 |
| Pilgrim Avenue Pump Station | Pump Station | Pilgrim Avenue | 5.02 | 42% | 0 | 5 | 5 | 0.00 | 2.08 | 2.08 | 0.00 | 0.38 | 2.48 |
| Taber Street Pump Station | Pump Station | Taber Street | 6.73 | 42% | 0 | 5 | 5 | 0.00 | 2.08 | 2.08 | 0.00 | 0.00 | 0.77 |
| Middle Street Pump Station | Pump Station | Middle Street | 8.38 | 42% | 0 | 5 | 5 | 0.00 | 2.08 | 2.08 | 0.00 | 0.00 | 0.00 |
| Union Wharf | Water Access | UNION WHARF | 3.86 | 38% | 5 | 5 | 5 | 1.88 | 1.88 | 1.88 | 0.84 | 1.74 | 3.64 |
| SMEC Transitional Services | School | 56 Bridge Street | 9.19 | 38% | 0 | 5 | 5 | 0.00 | 0.00 | 1.88 | 0.00 | 0.00 | 0.00 |
| Hoppy's Landing | Water Access | 55 GOULART MEMORIAL T | 5.02 | 29% | 5 | 5 | 5 | 1.46 | 1.46 | 1.46 | 6.68 | 8.68 | 10.88 |
| Cushman Park | Open Space | 87 Main Street | 6.32 | 29% | 5 | 5 | 5 | 1.46 | 1.46 | 1.46 | 0.00 | 0.00 | 1.08 |
| Riverside Cemetery | Open Space | Main Street | 3.54 | 25% | 5 | 5 | 5 | 1.25 | 1.25 | 1.25 | 1.06 | 1.96 | 3.96 |
| Fort Phoenix | Open Space | FT PHOENIX PARK | 2.81 | 25% | 5 | 5 | 5 | 1.25 | 1.25 | 1.25 | 0.00 | 0.00 | 0.00 |
| Macomber Pimental Park | Open Space | Bernese Street | 12.84 | 21% | 0.2 | 5 | 5 | 0.04 | 1.04 | 1.04 | 0.00 | 1.46 | 3.76 |
| VFW Post 2892 | Club/Lodge | 109 Middle Street | 8.40 | 17% | 0 | 0 | 5 | 0.00 | 0.00 | 0.83 | 0.00 | 0.00 | 0.00 |
| Edgewater/Rockland Street Beach | Open Space | Edgewater Street | 2.16 | 13% | 5 | 5 | 5 | 0.63 | 0.63 | 0.63 | 10.04 | 12.54 | 14.74 |
| Edgewater Street Boat Ramp | Water Access | EDGEWATER ST | 2.41 | 13% | 5 | 5 | 5 | 0.63 | 0.63 | 0.63 | 9.79 | 12.39 | 14.59 |
| Winsegansett Street Landing | Water Access | Winsegansett Street | 1.93 | 13% | 5 | 5 | 5 | 0.63 | 0.63 | 0.63 | 9.67 | 11.67 | 13.87 |
| Town Beach | Open Space | Goulart Memorial Drive | 2.51 | 13% | 5 | 5 | 5 | 0.63 | 0.63 | 0.63 | 9.29 | 11.39 | 13.59 |
| Gull Island Road Landing | Water Access | Gull Island Road | 2.16 | 13% | 5 | 5 | 5 | 0.63 | 0.63 | 0.63 | 9.14 | 11.14 | 13.44 |
| Bonney Street Landing | Water Access | Bonney Street | 3.27 | 13% | 5 | 5 | 5 | 0.63 | 0.63 | 0.63 | 8.83 | 11.23 | 13.43 |
| West Island Town Beach | Open Space | Fir Street | 3.46 | 13% | 5 | 5 | 5 | 0.63 | 0.63 | 0.63 | 8.14 | 10.14 | 12.44 |
| Bernese Street Landing | Water Access | Bernese Street | 6.32 | 13% | 5 | 5 | 5 | 0.63 | 0.63 | 0.63 | 5.58 | 7.98 | 10.28 |
| Briercliff Road Landing | Water Access | Briercliff Road | 7.31 | 13% | 5 | 5 | 5 | 0.63 | 0.63 | 0.63 | 4.59 | 6.89 | 9.19 |
| Hathaway Street Landing | Water Access | Hathaway Street | 9.23 | 13% | 5 | 5 | 5 | 0.63 | 0.63 | 0.63 | 2.87 | 5.27 | 7.47 |
| Jerusalem Road Landing | Water Access | Jerusalem Road | 10.55 | 13% | 2 | 5 | 5 | 0.25 | 0.63 | 0.63 | 1.35 | 3.65 | 5.95 |
| Bridge St Boat Ramp | Water Access | BRIDGE ST | 2.47 | 13% | 5 | 5 | 5 | 0.63 | 0.63 | 0.63 | 2.03 | 3.03 | 5.03 |
| Little Bay Conservation Area | Open Space | Peirces Point | 12.92 | 13% | 0.5 | 5 | 5 | 0.06 | 0.63 | 0.63 | 0.00 | 2.08 | 4.18 |
| Pease St Boat Ramp | Water Access | PEASE PARK | 3.80 | 13% | 5 | 5 | 5 | 0.63 | 0.63 | 0.63 | 0.90 | 1.80 | 3.70 |
| Calumet Street Landing | Water Access | Calumet Street | 12.86 | 13% | 0.2 | 5 | 5 | 0.03 | 0.63 | 0.63 | 0.00 | 1.34 | 3.64 |
| Blue Point Road Landing | Water Access | Blue Point Road | 12.92 | 13% | 0.2 | 5 | 5 | 0.03 | 0.63 | 0.63 | 0.00 | 1.08 | 3.28 |
| Sedgewick Street Landing | Water Access | Sedgewick Street | 14.14 | 13% | 0.1 | 5 | 5 | 0.01 | 0.63 | 0.63 | 0.00 | 0.06 | 2.36 |
| Fishermans Road Landing | Water Access | Fishermans Road | 14.08 | 13% | 0 | 5 | 5 | 0.00 | 0.63 | 0.63 | 0.00 | 0.00 | 1.52 |
| Little Neck Road Landing | Water Access | Little Neck Road | 20.41 | 13% | 0 | 5 | 5 | 0.00 | 0.63 | 0.63 | 0.00 | 0.00 | 0.00 |
| Raymond Street Landing/Austria Ave Lar | Water Access | Raymond Street | 2.51 | 13% | 5 | 5 | 5 | 0.63 | 0.63 | 0.63 | 0.00 | 0.00 | 0.00 |
| Cove St Beach | Open Space | Beach Cove St | 1.93 | 8% | 5 | 5 | 5 | 0.42 | 0.42 | 0.42 | 10.07 | 12.57 | 14.77 |
| Pope's Beach | Open Space | Bayview Avenue | 2.37 | 8% | 5 | 5 | 5 | 0.42 | 0.42 | 0.42 | 9.63 | 12.23 | 14.33 |
| Bedford - Fairhaven Battlefield | Historic Site | Town of Fairhaven | 2.81 | 8% | 5 | 5 | 5 | 0.42 | 0.42 | 0.42 | 9.59 | 11.99 | 14.09 |
| Knollmere Beach | Open Space | Nonquitt Avenue | 3.27 | 8% | 5 | 5 | 5 | 0.42 | 0.42 | 0.42 | 8.83 | 11.33 | 13.53 |
| Manhattan Beach | Open Space | Manhattan Avenue | 6.57 | 8% | 5 | 5 | 5 | 0.42 | 0.42 | 0.42 | 5.73 | 8.03 | 10.23 |
| Oxford Village - Poverty Point | Historic Site | Main Street | 14.08 | 8% | 0.1 | 5 | 5 | 0.01 | 0.42 | 0.42 | 0.00 | 0.00 | 0.00 |
| Twenty Acre Purchase | Historic Site | Water Street | 9.05 | 8% | 0.1 | 5 | 5 | 0.01 | 0.42 | 0.42 | 0.00 | 0.00 | 0.00 |
| Fairhaven Protecting Society - Old Town | Historic Site | 9 WASHINGTON ST | 7.35 | 21% | 0 | 0 | 0.5 | 0.00 | 0.00 | 0.10 | 0.00 | 0.00 | 0.00 |
| Royal of Fairhaven Nursing Home | Nursing Home | 184 Main Street | 14.04 | 50% | 0 | 0 | 5 | 0.00 | 0.00 | 0.00 | 0.00 | 0.00 | 0.00 |
| Fairhaven High School | School | 12 Huttleston Avenue | 6.83 | 58% | 0 | 0 | 0 | 0.00 | 0.00 | 0.00 | 0.00 | 0.00 | 0.00 |
| South Street Pump Station | Pump Station | South Street | 10.23 | 42% | 0 | 0 | 0 | 0.00 | 0.00 | 0.00 | 0.00 | 0.00 | 0.00 |
| Park & Ride | Transportation | I-195, 72 Sycamore St. | 7.75 | 13% | 0 | 0 | 0 | 0.00 | 0.00 | 0.00 | 0.00 | 0.00 | 0.00 |

Risk Scoring

Critical Infrastructure

| Name | Type | Address | CE_ftNA_VD88 | Consequence_Score | Prob_2030 | Prob_2050 | Prob_2070 | Risk_2030 | Risk_2050 | Risk_2070 | 1perc_Flood_Depth_2030 | 1perc_Flood_Depth_2050 | 1perc_Flood_Depth_2070 |
|---|----------------|------------------------|--------------|-------------------|-----------|-----------|-----------|-----------|-----------|-----------|------------------------|------------------------|------------------------|
| Abbey Street Pump Station | Pump Station | Abbey Street | 5.03 | 42% | 5 | 5 | 5 | 2.08 | 2.08 | 2.08 | 7.07 | 9.57 | 11.77 |
| Boulder Park Pump Station | Pump Station | James Street | 4.90 | 42% | 5 | 5 | 5 | 2.08 | 2.08 | 2.08 | 7.10 | 9.50 | 11.70 |
| Shore Drive Pump Station | Pump Station | Shore Drive | 5.65 | 42% | 5 | 5 | 5 | 2.08 | 2.08 | 2.08 | 6.35 | 8.65 | 10.85 |
| Weybridge Road Pump Station | Pump Station | Weybridge Road | 6.01 | 42% | 5 | 5 | 5 | 2.08 | 2.08 | 2.08 | 5.89 | 8.29 | 10.49 |
| Town of Fairhaven Boat Launch | Water Access | Shore Dr/ Seaview Ave | 7.15 | 42% | 5 | 5 | 5 | 2.08 | 2.08 | 2.08 | 4.85 | 7.15 | 9.35 |
| Bernese Street Pump Station | Pump Station | Bernese Street | 8.50 | 42% | 5 | 5 | 5 | 2.08 | 2.08 | 2.08 | 3.40 | 5.80 | 8.00 |
| Sunrise Court Pump Station | Pump Station | Sunrise Court | 9.21 | 42% | 5 | 5 | 5 | 2.08 | 2.08 | 2.08 | 2.89 | 5.19 | 7.49 |
| Manhattan Avenue Pump Station | Pump Station | Manhattan Avenue | 9.32 | 42% | 5 | 5 | 5 | 2.08 | 2.08 | 2.08 | 2.88 | 5.28 | 7.48 |
| Camel Street Pump Station | Pump Station | Camel Street | 9.38 | 42% | 5 | 5 | 5 | 2.08 | 2.08 | 2.08 | 2.52 | 4.72 | 6.92 |
| Rocky Point Road Pump Station | Pump Station | Rocky Point Road | 8.96 | 42% | 5 | 5 | 5 | 2.08 | 2.08 | 2.08 | 2.54 | 4.44 | 6.64 |
| Railroad Ave Pump Station | Pump Station | Fairhaven WWTP | 13.57 | 42% | 5 | 5 | 5 | 2.08 | 2.08 | 2.08 | 0.00 | 1.13 | 3.23 |
| Causeway Road Pump Station | Pump Station | Causway Road | 13.45 | 42% | 5 | 5 | 5 | 2.08 | 2.08 | 2.08 | 0.00 | 0.35 | 2.55 |
| Pilgrim Avenue Pump Station | Pump Station | Pilgrim Avenue | 5.02 | 42% | 0 | 5 | 5 | 0.00 | 2.08 | 2.08 | 0.00 | 0.38 | 2.48 |
| Taber Street Pump Station | Pump Station | Taber Street | 6.73 | 42% | 0 | 5 | 5 | 0.00 | 2.08 | 2.08 | 0.00 | 0.00 | 0.77 |
| Middle Street Pump Station | | | | | | | | | | | 0.00 | 0.00 | 0.00 |
| Union Wharf | | | | | | | | | | | 0.84 | 1.74 | 3.64 |
| SMEC Transitional Services | | | | | | | | | | | 0.00 | 0.00 | 0.00 |
| Hoppy's Landing | | | | | | | | | | | 6.68 | 8.68 | 10.88 |
| Cushman Park | | | | | | | | | | | 0.00 | 0.00 | 1.08 |
| Riverside Cemetery | | | | | | | | | | | 1.06 | 1.96 | 3.96 |
| Fort Pheonix | | | | | | | | | | | 0.00 | 0.00 | 0.00 |
| Macomber Pimental Park | | | | | | | | | | | 0.00 | 1.46 | 3.76 |
| VFW Post 2892 | | | | | | | | | | | 0.00 | 0.00 | 0.00 |
| Edgewater/Rockland Street Beach | | | | | | | | | | | 10.04 | 12.54 | 14.74 |
| Edgewater Street Boat Ramp | | | | | | | | | | | 9.79 | 12.39 | 14.59 |
| Winsegansett Street Landing | | | | | | | | | | | 9.67 | 11.67 | 13.87 |
| Town Beach | | | | | | | | | | | 9.29 | 11.39 | 13.59 |
| Gull Island Road Landing | | | | | | | | | | | 9.14 | 11.14 | 13.44 |
| Bonney Street Landing | | | | | | | | | | | 8.83 | 11.23 | 13.43 |
| West Island Town Beach | | | | | | | | | | | 8.14 | 10.14 | 12.44 |
| Bernese Street Landing | | | | | | | | | | | 5.58 | 7.98 | 10.28 |
| Briercliff Road Landing | | | | | | | | | | | 4.59 | 6.89 | 9.19 |
| Hathaway Street Landing | | | | | | | | | | | 2.87 | 5.27 | 7.47 |
| Jerusalem Road Landing | | | | | | | | | | | 1.35 | 3.65 | 5.95 |
| Bridge St Boat Ramp | | | | | | | | | | | 2.03 | 3.03 | 5.03 |
| Little Bay Conservation Area | | | | | | | | | | | 0.00 | 2.08 | 4.18 |
| Pease St Boat Ramp | | | | | | | | | | | 0.90 | 1.80 | 3.70 |
| Calumet Street Landing | | | | | | | | | | | 0.00 | 1.34 | 3.64 |
| Blue Point Road Landing | | | | | | | | | | | 0.00 | 1.08 | 3.28 |
| Sedgewick Street Landing | | | | | | | | | | | 0.00 | 0.06 | 2.36 |
| Fishermans Road Landing | | | | | | | | | | | 0.00 | 0.00 | 1.52 |
| Little Neck Road Landing | | | | | | | | | | | 0.00 | 0.00 | 0.00 |
| Raymond Street Landing/Austria Ave | | | | | | | | | | | 0.00 | 0.00 | 0.00 |
| Cove St Beach | Open Space | Beach Cove St | 1.93 | 8% | 5 | 5 | 5 | 0.42 | 0.42 | 0.42 | 10.07 | 12.57 | 14.77 |
| Pope's Beach | Open Space | Bayview Avenue | 2.37 | 8% | 5 | 5 | 5 | 0.42 | 0.42 | 0.42 | 9.63 | 12.23 | 14.33 |
| Bedford - Fairhaven Battlefield | Historic Site | Town of Fairhaven | 2.81 | 8% | 5 | 5 | 5 | 0.42 | 0.42 | 0.42 | 9.59 | 11.99 | 14.09 |
| Knollmere Beach | Open Space | Nonquitt Avenue | 3.27 | 8% | 5 | 5 | 5 | 0.42 | 0.42 | 0.42 | 8.83 | 11.33 | 13.53 |
| Manhattan Beach | Open Space | Manhattan Avenue | 6.57 | 8% | 5 | 5 | 5 | 0.42 | 0.42 | 0.42 | 5.73 | 8.03 | 10.23 |
| Oxford Village - Poverty Point | Historic Site | Main Street | 14.08 | 8% | 0.1 | 5 | 5 | 0.01 | 0.42 | 0.42 | 0.00 | 0.00 | 0.00 |
| Twenty Acre Purchase | Historic Site | Water Street | 9.05 | 8% | 0.1 | 5 | 5 | 0.01 | 0.42 | 0.42 | 0.00 | 0.00 | 0.00 |
| Fairhaven Protecting Society - Old Town | Historic Site | 9 WASHINGTON ST | 7.35 | 21% | 0 | 0 | 0.5 | 0.00 | 0.00 | 0.10 | 0.00 | 0.00 | 0.00 |
| Royal of Fairhaven Nursing Home | Nursing Home | 184 Main Street | 14.04 | 50% | 0 | 0 | 5 | 0.00 | 0.00 | 0.00 | 0.00 | 0.00 | 0.00 |
| Fairhaven High School | School | 12 Huttleston Avenue | 6.83 | 58% | 0 | 0 | 0 | 0.00 | 0.00 | 0.00 | 0.00 | 0.00 | 0.00 |
| South Street Pump Station | Pump Station | South Street | 10.23 | 42% | 0 | 0 | 0 | 0.00 | 0.00 | 0.00 | 0.00 | 0.00 | 0.00 |
| Park & Ride | Transportation | I-195, 72 Sycamore St. | 7.75 | 13% | 0 | 0 | 0 | 0.00 | 0.00 | 0.00 | 0.00 | 0.00 | 0.00 |

1. 14 Pump Stations
2. Fairhaven Boat Launch
3. Union Wharf
4. SMEC Transitional Services
5. Open Space Parks
 - Cushman Park
 - Riverside Cemetery
 - Fort Pheonix
 - Macomber Pimental Park

Consequence Scoring

Transportation Infrastructure

| Name | Subtype | Service_Loss_ Area | Service_Loss_ Duration | Damage_Cost | Public_Safety | Economic _Impact | Health_and_ Environment | Consequence _Score |
|------------------------------------|-----------------------------|-----------------------|---------------------------|-------------|---------------|---------------------|----------------------------|-----------------------|
| HUTTLESTON AVENUE / ROUTE 6 (East) | Multi-lane Highway, not lir | 4 | 3 | 1 | 4 | 2 | 0 | 58.33% |
| HUTTLESTON AVENUE / ROUTE 6 (West) | Multi-lane Highway, not lir | 4 | 3 | 1 | 4 | 2 | 0 | 58.33% |
| SCONTICUT NECK ROAD | Major Road | 3 | 3 | 1 | 3 | 2 | 0 | 50.00% |
| MAIN STREET | Major Road | 3 | 3 | 1 | 3 | 2 | 0 | 50.00% |
| GREEN STREET | Major Road | 3 | 3 | 1 | 3 | 2 | 0 | 50.00% |
| GREEN STREET / BEACON STREET | Major Road | 3 | 3 | 1 | 3 | 2 | 0 | 50.00% |
| HOWLAND ROAD | Major Road | 3 | 3 | 1 | 3 | 2 | 0 | 50.00% |
| INTERSTATE 195 | Limited Access Highway | 4 | 3 | 1 | 4 | 0 | 0 | 50.00% |
| WASHINGTON STREET | Major Road | 3 | 3 | 1 | 3 | 2 | 0 | 50.00% |
| EDGEWATER STREET | Minor Street or Road | 2 | 3 | 1 | 2 | 2 | 0 | 41.67% |
| SCOTT STREET | Minor Street or Road | 2 | 3 | 1 | 2 | 2 | 0 | 41.67% |
| SHAWMUT STREET | Minor Street or Road | 2 | 3 | 1 | 2 | 2 | 0 | 41.67% |
| BLUEPOINT ROAD | Minor Street or Road | 2 | 3 | 1 | 2 | 2 | 0 | 41.67% |
| STETSON AVENUE | Minor Street or Road | 2 | 3 | 1 | 2 | 2 | 0 | 41.67% |
| ALCOBIA DRIVE | Minor Street or Road | 2 | 3 | 1 | 2 | 2 | 0 | 41.67% |
| SHORE DRIVE | Minor Street or Road | 2 | 3 | 1 | 2 | 2 | 0 | 41.67% |
| SHAW COVE | Minor Street or Road | 2 | 3 | 1 | 2 | 2 | 0 | 41.67% |
| CALUMET ROAD | Minor Street or Road | 2 | 3 | 1 | 2 | 2 | 0 | 41.67% |
| WAPATMA LANE | Minor Street or Road | 2 | 3 | 1 | 2 | 2 | 0 | 41.67% |
| WIDEMARSH-BEACH WAY | Minor Street or Road | 2 | 3 | 1 | 2 | 2 | 0 | 41.67% |
| FREDERICK AVENUE | Minor Street or Road | 2 | 3 | 1 | 2 | 2 | 0 | 41.67% |
| LAWRENCE STREET | Minor Street or Road | 2 | 3 | 1 | 2 | 2 | 0 | 41.67% |
| BUIST AVENUE | Minor Street or Road | 2 | 3 | 1 | 2 | 2 | 0 | 41.67% |
| SCALLOP ROAD / BALSAM STREET | Minor Street or Road | 2 | 3 | 1 | 2 | 2 | 0 | 41.67% |
| OCEAN AVENUE | Minor Street or Road | 2 | 3 | 1 | 2 | 2 | 0 | 41.67% |
| AUSTRIA AVENUE | Minor Street or Road | 2 | 3 | 1 | 2 | 2 | 0 | 41.67% |
| MORAVIA AVENUE | Minor Street or Road | 2 | 3 | 1 | 2 | 2 | 0 | 41.67% |
| GRANDVIEW AVENUE | Minor Street or Road | 2 | 3 | 1 | 2 | 2 | 0 | 41.67% |
| EGYPT LANE / HYLAND STREET | Minor Street or Road | 2 | 3 | 1 | 2 | 2 | 0 | 41.67% |
| HATHAWAY STREET | Minor Street or Road | 2 | 3 | 1 | 2 | 2 | 0 | 41.67% |
| WINDSWEPT DRIVE | Minor Street or Road | 2 | 3 | 1 | 2 | 2 | 0 | 41.67% |
| KENNEDY COURT | Minor Street or Road | 2 | 3 | 1 | 2 | 2 | 0 | 41.67% |
| BELLA VIST ISL | Minor Street or Road | 2 | 3 | 1 | 2 | 2 | 0 | 41.67% |
| NONQUITT AVENUE | Minor Street or Road | 2 | 3 | 1 | 2 | 2 | 0 | 41.67% |
| SHORE DRIVE / GRANDVIEW AVENUE | Minor Street or Road | 2 | 3 | 1 | 2 | 2 | 0 | 41.67% |

Risk Scoring

Transportation Infrastructure

| Name | Subtype | Consequence_ | | | | | | 1perc_Flood_ | | | | |
|-------------------------------------|-----------------------------|--------------|--------|-----------|-----------|-----------|-----------|--------------|-----------|------------|------------|------------|
| | | CE_ftNAVD88 | Score | Prob_2030 | Prob_2050 | Prob_2070 | Risk_2030 | Risk_2050 | Risk_2070 | Depth_2030 | Depth_2050 | Depth_2070 |
| HUTTLESTON AVENUE / ROUTE 6 (East) | Multi-lane Highway, not lir | 9.42 | 58.33% | 5 | 5 | 5 | 2.92 | 2.92 | 2.92 | 2.68 | 5.58 | 7.48 |
| HUTTLESTON AVENUE / ROUTE 6 (West) | Multi-lane Highway, not lir | 5.52 | 58.33% | 0 | 1 | 5 | 0.00 | 0.58 | 2.92 | 0.00 | 0.08 | 1.98 |
| SCONTICUT NECK ROAD | Major Road | 4.59 | 50.00% | 5 | 5 | 5 | 2.50 | 2.50 | 2.50 | 7.61 | 10.01 | 12.21 |
| MAIN STREET | Major Road | 3.56 | 50.00% | 5 | 5 | 5 | 2.50 | 2.50 | 2.50 | 1.04 | 2.04 | 4.14 |
| GREEN STREET | Major Road | 3.43 | 50.00% | 0 | 0.1 | 5 | 0.00 | 0.05 | 2.50 | 0.00 | 0.00 | 3.97 |
| GREEN STREET / BEACON STREET | Major Road | 12.71 | 50.00% | 0.5 | 2 | 5 | 0.25 | 1.00 | 2.50 | 0.00 | 1.89 | 3.89 |
| HOWLAND ROAD | Major Road | 4.60 | 50.00% | 0.5 | 5 | 5 | 0.25 | 2.50 | 2.50 | 0.00 | 0.90 | 2.80 |
| INTERSTATE 195 | Limited Access Highway | 5.18 | 50.00% | 0 | 5 | 5 | 0.00 | 2.50 | 2.50 | 0.00 | 0.32 | 2.32 |
| WASHINGTON STREET | Major Road | 6.42 | 50.00% | 0 | 0 | 5 | 0.00 | 0.00 | 2.50 | 0.00 | 0.00 | 0.98 |
| EDGEWATER STREET | Minor Street or Road | 1.56 | 41.67% | 5 | 5 | 5 | 2.08 | 2.08 | 2.08 | 10.64 | 13.24 | 15.44 |
| SCOTT STREET | Minor Street or Road | 2.15 | 41.67% | 5 | 5 | 5 | 2.08 | 2.08 | 2.08 | 9.95 | 12.55 | 14.65 |
| SHAWMUT STREET | Minor Street or Road | 3.05 | 41.67% | 5 | 5 | 5 | 2.08 | 2.08 | 2.08 | 9.15 | 11.85 | 14.05 |
| BLUEPOINT ROAD | Minor Street or Road | 2.18 | 41.67% | 5 | 5 | 5 | 2.08 | 2.08 | 2.08 | 9.72 | 11.82 | 14.02 |
| STETSON AVENUE | Minor Street or Road | 2.71 | 41.67% | 5 | 5 | 5 | 2.08 | 2.08 | 2.08 | 9.29 | 11.69 | 13.99 |
| ALCOBIA DRIVE | Minor Street or Road | 2.34 | 41.67% | 5 | 5 | 5 | 2.08 | 2.08 | 2.08 | 9.46 | 11.46 | 13.76 |
| SHORE DRIVE | Minor Street or Road | 2.76 | 41.67% | 5 | 5 | 5 | 2.08 | 2.08 | 2.08 | 9.24 | 11.54 | 13.74 |
| SHAW COVE | Minor Street or Road | 3.09 | 41.67% | 5 | 5 | 5 | 2.08 | 2.08 | 2.08 | 9.21 | 11.51 | 13.71 |
| CALUMET ROAD | Minor Street or Road | 2.85 | 41.67% | 5 | 5 | 5 | 2.08 | 2.08 | 2.08 | 9.15 | 11.35 | 13.65 |
| WAPATMA LANE | Minor Street or Road | 2.84 | 41.67% | 5 | 5 | 5 | 2.08 | 2.08 | 2.08 | 9.16 | 11.26 | 13.46 |
| WIDEMARSH-BEACH WAY | Minor Street or Road | 2.94 | 41.67% | 5 | 5 | 5 | 2.08 | 2.08 | 2.08 | 9.06 | 11.26 | 13.46 |
| FREDERICK AVENUE | Minor Street or Road | 3.36 | 41.67% | 5 | 5 | 5 | 2.08 | 2.08 | 2.08 | 8.64 | 11.04 | 13.44 |
| LAWRENCE STREET | Minor Street or Road | 3.49 | 41.67% | 5 | 5 | 5 | 2.08 | 2.08 | 2.08 | 8.61 | 11.21 | 13.31 |
| BUIST AVENUE | Minor Street or Road | 3.57 | 41.67% | 5 | 5 | 5 | 2.08 | 2.08 | 2.08 | 8.53 | 11.03 | 13.23 |
| SCALLOP ROAD / BALSAM STREET | Minor Street or Road | 3.09 | 41.67% | 5 | 5 | 5 | 2.08 | 2.08 | 2.08 | 8.71 | 10.91 | 13.11 |
| OCEAN AVENUE | Minor Street or Road | 3.40 | 41.67% | 5 | 5 | 5 | 2.08 | 2.08 | 2.08 | 8.60 | 10.90 | 13.10 |
| AUSTRIA AVENUE | Minor Street or Road | 3.77 | 41.67% | 5 | 5 | 5 | 2.08 | 2.08 | 2.08 | 8.23 | 10.73 | 13.03 |
| MORAVIA AVENUE | Minor Street or Road | 3.69 | 41.67% | 5 | 5 | 5 | 2.08 | 2.08 | 2.08 | 8.31 | 10.81 | 13.01 |
| GRANDVIEW AVENUE | Minor Street or Road | 3.56 | 41.67% | 5 | 5 | 5 | 2.08 | 2.08 | 2.08 | 8.44 | 10.74 | 12.94 |
| EGYPT LANE / HYLAND STREET | Minor Street or Road | 3.88 | 41.67% | 5 | 5 | 5 | 2.08 | 2.08 | 2.08 | 8.32 | 10.82 | 12.92 |
| HATHAWAY STREET | Minor Street or Road | 4.08 | 41.67% | 5 | 5 | 5 | 2.08 | 2.08 | 2.08 | 8.22 | 10.72 | 12.92 |
| WINDSWEPT DRIVE | Minor Street or Road | 3.39 | 41.67% | 5 | 5 | 5 | 2.08 | 2.08 | 2.08 | 8.61 | 10.71 | 12.91 |
| KENNEDY COURT | Minor Street or Road | 3.99 | 41.67% | 5 | 5 | 5 | 2.08 | 2.08 | 2.08 | 8.21 | 10.71 | 12.91 |
| BELLA VIST ISL | Minor Street or Road | 3.43 | 41.67% | 5 | 5 | 5 | 2.08 | 2.08 | 2.08 | 8.47 | 10.67 | 12.87 |
| NONQUITT AVENUE | Minor Street or Road | 3.93 | 41.67% | 5 | 5 | 5 | 2.08 | 2.08 | 2.08 | 8.17 | 10.77 | 12.87 |
| SHORE DRIVE / GRANDVIEW AVENUE | Minor Street or Road | 3.64 | 41.67% | 5 | 5 | 5 | 2.08 | 2.08 | 2.08 | 8.36 | 10.66 | 12.86 |
| BAYSIDE STREET | Minor Street or Road | 3.07 | 41.67% | 5 | 5 | 5 | 2.08 | 2.08 | 2.08 | 8.43 | 10.53 | 12.73 |
| POINT STREET | Minor Street or Road | 4.11 | 41.67% | 5 | 5 | 5 | 2.08 | 2.08 | 2.08 | 8.19 | 10.49 | 12.69 |
| COTTONWOOD STREET | Minor Street or Road | 3.61 | 41.67% | 5 | 5 | 5 | 2.08 | 2.08 | 2.08 | 8.29 | 10.39 | 12.69 |
| EMERSON AVENUE | Minor Street or Road | 4.04 | 41.67% | 5 | 5 | 5 | 2.08 | 2.08 | 2.08 | 7.96 | 10.36 | 12.66 |
| HACKER STREET | Minor Street or Road | 4.15 | 41.67% | 5 | 5 | 5 | 2.08 | 2.08 | 2.08 | 7.95 | 10.45 | 12.65 |
| WILBURS POINT DRIVE / NAKATA AVENUE | Minor Street or Road | 2.95 | 41.67% | 5 | 5 | 5 | 2.08 | 2.08 | 2.08 | 8.45 | 10.45 | 12.65 |
| TURNER AVENUE | Minor Street or Road | 4.07 | 41.67% | 5 | 5 | 5 | 2.08 | 2.08 | 2.08 | 8.03 | 10.43 | 12.63 |
| COVE STREET | Minor Street or Road | 4.08 | 41.67% | 5 | 5 | 5 | 2.08 | 2.08 | 2.08 | 8.02 | 10.52 | 12.62 |
| ALMOND STREET | Minor Street or Road | 3.63 | 41.67% | 5 | 5 | 5 | 2.08 | 2.08 | 2.08 | 8.27 | 10.37 | 12.57 |
| HIGHLAND AVENUE | Minor Street or Road | 4.25 | 41.67% | 5 | 5 | 5 | 2.08 | 2.08 | 2.08 | 7.85 | 10.35 | 12.55 |
| BAKER AVENUE | Minor Street or Road | 4.15 | 41.67% | 5 | 5 | 5 | 2.08 | 2.08 | 2.08 | 7.95 | 10.35 | 12.55 |

Risk Scoring

Transportation Infrastructure

| Name | Subtype | Consequence_ | | | | | | 1perc_Flood_ | | | | |
|-------------------------------------|-----------------------------|--------------|--------|-----------|-----------|-----------|-----------|--------------|-----------|------------|------------|------------|
| | | CE_ftNAVD88 | Score | Prob_2030 | Prob_2050 | Prob_2070 | Risk_2030 | Risk_2050 | Risk_2070 | Depth_2030 | Depth_2050 | Depth_2070 |
| HUTTLESTON AVENUE / ROUTE 6 (East) | Multi-lane Highway, not lir | 9.42 | 58.33% | 5 | 5 | 5 | 2.92 | 2.92 | 2.92 | 2.68 | 5.58 | 7.48 |
| HUTTLESTON AVENUE / ROUTE 6 (West) | Multi-lane Highway, not lir | 5.52 | 58.33% | 0 | 1 | 5 | 0.00 | 0.58 | 2.92 | 0.00 | 0.08 | 1.98 |
| SCONTICUT NECK ROAD | Major Road | 4.59 | 50.00% | 5 | 5 | 5 | 2.50 | 2.50 | 2.50 | 7.61 | 10.01 | 12.21 |
| MAIN STREET | Major Road | 3.56 | 50.00% | 5 | 5 | 5 | 2.50 | 2.50 | 2.50 | 1.04 | 2.04 | 4.14 |
| GREEN STREET | Major Road | 3.43 | 50.00% | 0 | 0.1 | 5 | 0.00 | 0.05 | 2.50 | 0.00 | 0.00 | 3.97 |
| GREEN STREET / BEACON STREET | Major Road | 12.71 | 50.00% | 0.5 | 2 | 5 | 0.25 | 1.00 | 2.50 | 0.00 | 1.89 | 3.89 |
| HOWLAND ROAD | Major Road | 4.60 | 50.00% | 0.5 | 5 | 5 | 0.25 | 2.50 | 2.50 | 0.00 | 0.90 | 2.80 |
| INTERSTATE 195 | Limited Access Highway | 5.18 | 50.00% | 0 | 5 | 5 | 0.00 | 2.50 | 2.50 | 0.00 | 0.32 | 2.32 |
| WASHINGTON STREET | Major Road | 6.42 | 50.00% | 0 | 0 | 5 | 0.00 | 0.00 | 2.50 | 0.00 | 0.00 | 0.98 |
| EDGEWATER STREET | Minor Street or Road | 1.56 | 41.67% | 5 | 5 | 5 | 2.08 | 2.08 | 2.08 | 10.64 | 13.24 | 15.44 |
| SCOTT STREET | Mini | | | | | | 2.08 | | 2.08 | 9.95 | 12.55 | 14.65 |
| SHAWMUT STREET | Mini | | | | | | 2.08 | | 2.08 | 9.15 | 11.85 | 14.05 |
| BLUEPOINT ROAD | Mini | | | | | | 2.08 | | 2.08 | 9.72 | 11.82 | 14.02 |
| STETSON AVENUE | Mini | | | | | | 2.08 | | 2.08 | 9.29 | 11.69 | 13.99 |
| ALCOBIA DRIVE | Mini | | | | | | 2.08 | | 2.08 | 9.46 | 11.46 | 13.76 |
| SHORE DRIVE | Mini | | | | | | 2.08 | | 2.08 | 9.24 | 11.54 | 13.74 |
| SHAW COVE | Mini | | | | | | 2.08 | | 2.08 | 9.21 | 11.51 | 13.71 |
| CALUMET ROAD | Mini | | | | | | 2.08 | | 2.08 | 9.15 | 11.35 | 13.65 |
| WAPATMA LANE | Mini | | | | | | 2.08 | | 2.08 | 9.16 | 11.26 | 13.46 |
| WIDEMARSH-BEACH WAY | Mini | | | | | | 2.08 | | 2.08 | 9.06 | 11.26 | 13.46 |
| FREDERICK AVENUE | Mini | | | | | | 2.08 | | 2.08 | 8.64 | 11.04 | 13.44 |
| LAWRENCE STREET | Mini | | | | | | 2.08 | | 2.08 | 8.61 | 11.21 | 13.31 |
| BUIST AVENUE | Mini | | | | | | 2.08 | | 2.08 | 8.53 | 11.03 | 13.23 |
| SCALLOP ROAD / BALSAM STREET | Mini | | | | | | 2.08 | | 2.08 | 8.71 | 10.91 | 13.11 |
| OCEAN AVENUE | Mini | | | | | | 2.08 | | 2.08 | 8.60 | 10.90 | 13.10 |
| AUSTRIA AVENUE | Mini | | | | | | 2.08 | | 2.08 | 8.23 | 10.73 | 13.03 |
| MORAVIA AVENUE | Mini | | | | | | 2.08 | | 2.08 | 8.31 | 10.81 | 13.01 |
| GRANDVIEW AVENUE | Mini | | | | | | 2.08 | | 2.08 | 8.44 | 10.74 | 12.94 |
| EGYPT LANE / HYLAND STREET | Mini | | | | | | 2.08 | | 2.08 | 8.32 | 10.82 | 12.92 |
| HATHAWAY STREET | Mini | | | | | | 2.08 | | 2.08 | 8.22 | 10.72 | 12.92 |
| WINDSWEPT DRIVE | Mini | | | | | | 2.08 | | 2.08 | 8.61 | 10.71 | 12.91 |
| KENNEDY COURT | Mini | | | | | | 2.08 | | 2.08 | 8.21 | 10.71 | 12.91 |
| BELLA VIST ISL | Mini | | | | | | 2.08 | | 2.08 | 8.47 | 10.67 | 12.87 |
| NONQUITT AVENUE | Mini | | | | | | 2.08 | | 2.08 | 8.17 | 10.77 | 12.87 |
| SHORE DRIVE / GRANDVIEW AVENUE | Mini | | | | | | 2.08 | | 2.08 | 8.36 | 10.66 | 12.86 |
| BAYSIDE STREET | Mini | | | | | | 2.08 | | 2.08 | 8.43 | 10.53 | 12.73 |
| POINT STREET | Minor Street or Road | 4.11 | 41.67% | 5 | 5 | 5 | 2.08 | 2.08 | 2.08 | 8.19 | 10.49 | 12.69 |
| COTTONWOOD STREET | Minor Street or Road | 3.61 | 41.67% | 5 | 5 | 5 | 2.08 | 2.08 | 2.08 | 8.29 | 10.39 | 12.69 |
| EMERSON AVENUE | Minor Street or Road | 4.04 | 41.67% | 5 | 5 | 5 | 2.08 | 2.08 | 2.08 | 7.96 | 10.36 | 12.66 |
| HACKER STREET | Minor Street or Road | 4.15 | 41.67% | 5 | 5 | 5 | 2.08 | 2.08 | 2.08 | 7.95 | 10.45 | 12.65 |
| WILBURS POINT DRIVE / NAKATA AVENUE | Minor Street or Road | 2.95 | 41.67% | 5 | 5 | 5 | 2.08 | 2.08 | 2.08 | 8.45 | 10.45 | 12.65 |
| TURNER AVENUE | Minor Street or Road | 4.07 | 41.67% | 5 | 5 | 5 | 2.08 | 2.08 | 2.08 | 8.03 | 10.43 | 12.63 |
| COVE STREET | Minor Street or Road | 4.08 | 41.67% | 5 | 5 | 5 | 2.08 | 2.08 | 2.08 | 8.02 | 10.52 | 12.62 |
| ALMOND STREET | Minor Street or Road | 3.63 | 41.67% | 5 | 5 | 5 | 2.08 | 2.08 | 2.08 | 8.27 | 10.37 | 12.57 |
| HIGHLAND AVENUE | Minor Street or Road | 4.25 | 41.67% | 5 | 5 | 5 | 2.08 | 2.08 | 2.08 | 7.85 | 10.35 | 12.55 |
| BAKER AVENUE | Minor Street or Road | 4.15 | 41.67% | 5 | 5 | 5 | 2.08 | 2.08 | 2.08 | 7.95 | 10.35 | 12.55 |

1. Huttleston Ave / Route 6
2. Sconticut Neck Rd
3. Main St
4. Green St
5. Howland Rd
6. I-195
7. Washington St
8. Local Roadways

MVP FY24 – Adaptation Plan



AVOID – Keep new development away from areas of current and future risk.



ACCOMMODATE – Continue to occupy the same area but modify assets to enhance their flood tolerance and resilience.



PROTECT – Continue to occupy the same area but modify assets or surroundings to keep flood waters out.



ADVANCE – Land reclamation may be used in extenuating circumstances to build seaward protection (hard structures or soft solutions) where other options are limited.



RETREAT – Move existing at-risk assets to higher ground to reduce exposure to flooding.

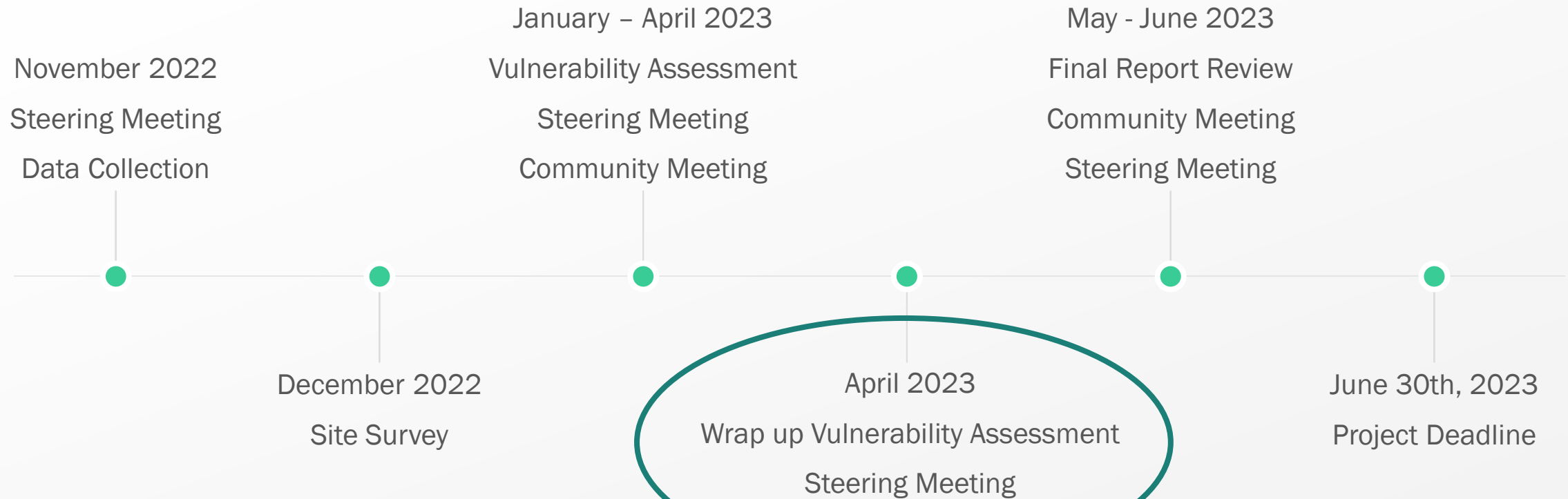
Community Meeting #2

May / June 2023

- › Present Asset-based Flood Risk Results
- › Discuss Critical Flood Pathways / Low-Lying Areas
- › Elicit Feedback on Priority Areas in the Town

| Community Group | Contact Information |
|--|--|
| Fairhaven Housing Authority | fhvnhousing@comcast.net Chris Sheehy? |
| Fairhaven Historic Commission | kcamara@fairhaven-ma.gov |
| Fairhaven Department of Public Works | vfurtado@fairhaven-ma.gov ; rrobillard@fairhaven-ma.gov ; jfurtado@fairhaven-ma.gov |
| Fairhaven Highway | jcrabb@fairhaven-ma.gov |
| Fairhaven Conservation Commission | |
| Fairhaven Emergency Services | scott.gordon@fairhavenpolice.org ; tcorreia@fairhaven-ma.gov ; chief@fairhavenpolice.org |
| Fairhaven Sustainability Committee | sustainability@fairhaven-ma.gov |
| Fairhaven Economic Development Committee | pfoley@fairhaven-ma.gov |
| Fairhaven Planning Board | pfoley@fairhaven-ma.gov |
| Fairhaven Assessor | dlane@fairhaven-ma.gov |
| High School Administration | tkohler@fairhaven-ma.gov |
| Harbormaster | tcox@fairhaven-ma.gov |
| Fairhaven Improvement Association | |
| West Island Improvement Association | mkwestis@yahoo.com |
| North Fairhaven Improvement Association | northfairhavenimprovement267@gmail.com |
| Buzzards Bay Coalition | info@savebuzzardsbay.org |
| Fairhaven Shipyard Company | info@fairhavenshipyard.com Kevin McCloughlin? |
| Alexander Shipyard | |
| Darren Punchard | darrin@punchardconsulting.com |
| Jeff Osuch | osuch1@aol.com |
| General Public | Outreach Flyer and Newspaper Advertisement |

Project Schedule



2022-2023

We are here



Thank you

Questions, discussion...

cofsthun@woodsholegroup.com